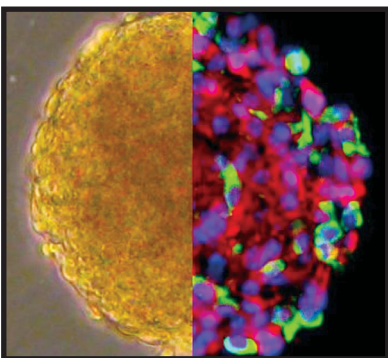


THE GRADUATE SCHOOL | MONTANA STATE UNIVERSITY

Cell Biology and Neuroscience

DEGREES OFFERED

- M.S. in Neuroscience
- Ph.D. in Neuroscience
- M.S. in Biological Sciences
- Ph.D. in Biological Sciences



Department Address:
510 Leon Johnson Hall
P.O. Box 173148
Bozeman, MT 59717-3148
Phone: (406) 994-5120
Fax: (406) 994-7077
E-mail: cellbio.msu@gmail.com

The Department of Cell Biology and Neuroscience offers exciting opportunities to work with nationally and internationally recognized faculty on a wide range of research topics, including cognitive neuroscience, neurophysiology, developmental biology, cell biology, biophysics and computational neuroscience. It is the goal of the faculty to prepare our students for successful careers in academic research, government, and/or the biotechnology industry.

We offer Ph.D. or M.S. degrees in Neuroscience or Biological Science to our graduate students. The Ph.D. Degree Program is designed for students who are committed to a scientific research career and are willing to commit an average of 5 to 6 years in pursuit of the training that is necessary to qualify for this degree. The M.S. degree is for students who wish to increase their knowledge base in basic research through an intensive 2- to 3-year training period.

Successful applicants to the program will have already established a commitment to excellence through academic achievements and prior research experience. Students must identify a faculty sponsor *prior to* application to the CBN Graduate Program. Individuals accepted into the graduate program will be considered for financial support as a Graduate Research Assistant or Graduate Teaching Assistant.

EXCELLENCE IN RESEARCH

Research in CBN uncovers new knowledge and develops innovative technologies in several key areas of cell biology and neuroscience. Our labs cultivate a new generation of biologists equipped to pioneer advanced experimental and computational approaches to investigate complex biological systems.

continued



MONTANA
STATE UNIVERSITY

The
GRADUATE SCHOOL

Cell Biology and Neuroscience, continued

Extensive collaborations across campus and beyond provide graduate students with the interdisciplinary approach required for success and innovation. Collaborative partners in Montana include faculty in the Departments of Physics, Chemistry and Biochemistry, Mechanical and Industrial Engineering, Math, and Psychology at MSU as well as The University of Montana.

APPLICATION PROCEDURES

Prospective graduate students should apply through the Molecular BIOSciences Program at MSU, <http://www.mbprogram.montana.edu/index.html>. The application deadline for the Molecular BIOSciences Program is January 20th of each year.

CBN faculty affiliated with the Molecular Biosciences Program includes Roger Bradley, Charles Gray, Frances Lefcort, Thomas Hughes, Christa Merzdorf and Steve Stowers.

If a professor in the department has agreed to be your graduate mentor, you may apply directly to CBN at any time. **Only applicants who have confirmed a faculty mentor for their graduate program may submit applications directly to CBN.**

DEPARTMENT HEAD

Frances Lefcort, *WWAMI medical education program, Molecular and cellular neural development*, lefcort@montana.edu

DIRECTOR OF CBN GRADUATE STUDIES

Behrad Noudoost, *Top-Down Control of Visual Signals: Neuronal Basis and Neuromodulators*, bnoudoost@montana.edu

FACULTY

Roger Bradley, *Developmental neuroscience*, rbradley@montana.edu

Cassie Cusick, *WWAMI medical education program*, ccusick@montana.edu

Steven Eiger, *WWAMI medical education program*, eiger@montana.edu

Charles Gray, *Neurophysiology of visual perception and cognition*, cmgray@cns.montana.edu

Thom Hughes, *Biophysics*, thughes@montana.edu

Susy Kohout, *Voltage Dependent Signaling*, kohout.sc@gmail.com

Christa Merzdorf, *Developmental neurobiology*, merzdorf@montana.edu

John P. Miller, *Neurophysiology*, jpm@cns.montana.edu

Steve Stowers, *Genetic analysis of neural circuits*, sstowers@montana.edu

RESEARCH FACULTY

Lynn George, *Molecular and cellular neural development*, lgeorge@montana.edu

Dana Rashid, danarashid5@gmail.com

AFFILIATE FACULTY

John R. Bermingham, Jr., *McLaughlin Research Institute*, <http://mclaughlinresearch.org/research-scientists/faculty/john-bermingham/>

Deborah Cabin, *McLaughlin Research Institute*, <http://mclaughlinresearch.org/research-scientists/faculty/deborah-cabin/>

George Carlson, *Director, McLaughlin Research Institute*, <http://mclaughlinresearch.org/research-scientists/faculty/george-carlson/>

Teresa M. Gunn, *McLaughlin Research Institute*, <http://mclaughlinresearch.org/research-scientists/faculty/teresa-gunn/>

John A. Mercer, *McLaughlin Research Institute*, <http://mclaughlinresearch.org/research-scientists/faculty/john-mercer/>

