

Spartan Student v7 Installation

Step #1

Acquire the appropriate installation file for Spartan Student 7 from the link below.

<http://downloads.wavefun.com/WavefunctionDownloads.pdf>

Note: Keep in mind Spartan Student 7 is licensed each time it is run by communicating with a server located on the campus of Montana State University. In order for this licensing to take place successfully, your computer **MUST** be connected to a wired network jack, MSU-Secure wireless, or connected remotely by VPN. For help, you may visit the links below, or contact the ITC Service Desk located in Renee Library.

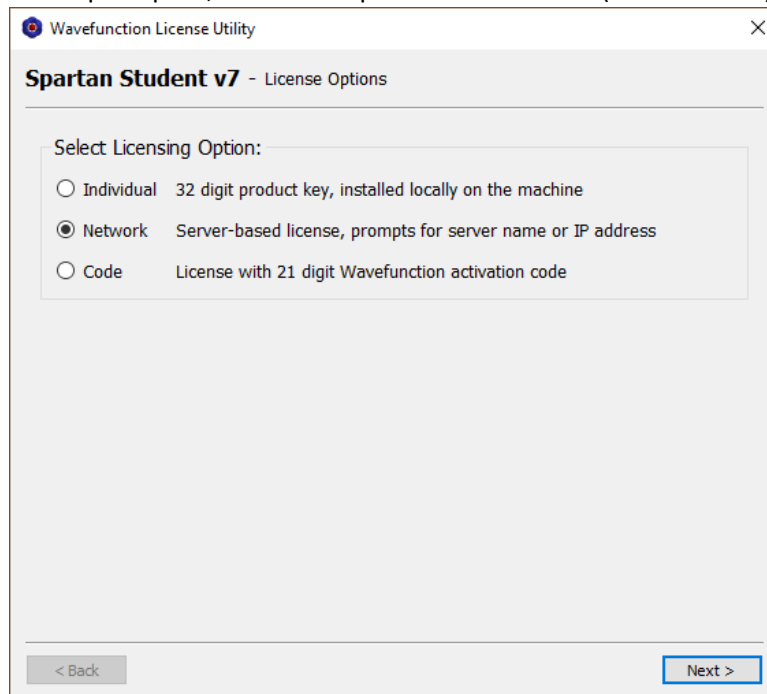
MSU Wireless Network Access: <http://www.montana.edu/wifi/>

Off-Campus VPN Access: <http://www.montana.edu/itcenter/computing/desktop/vpn.html>

Step #2 Installation – Windows or Mac

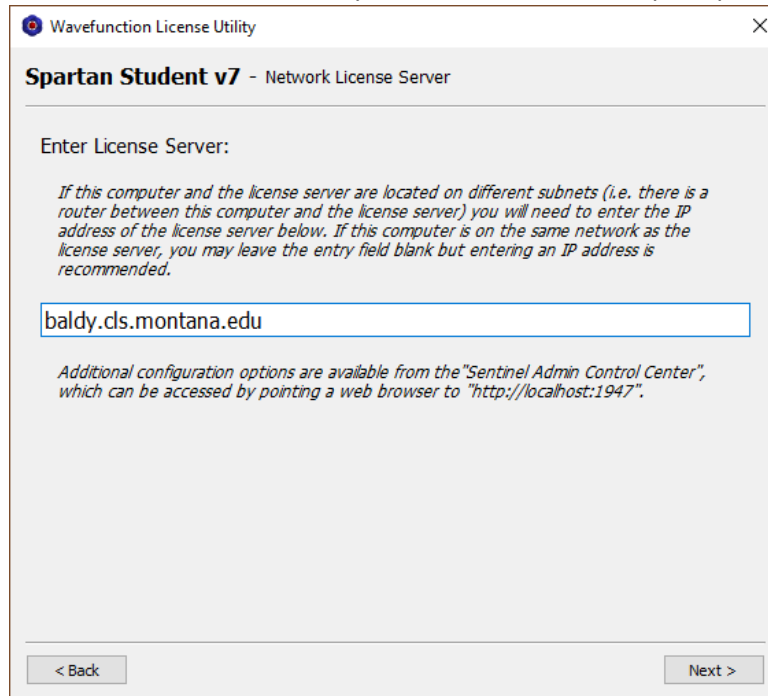
Windows Installation:

- 1) Run the downloaded installer, answering affirmatively to all dialogues until prompted for the license type.
- 2) When prompted, select the option for a Network (server-based) license



- 3) Proceed through the Sentinel Runtime Installation Wizard, affirming all dialogues

- 4) Set the license server to baldy.cls.montana.edu when prompted



- 5) Answer affirmatively to the remaining dialogues to complete the installation

Mac Installation (Screenshots similar to Windows)

- 1) Run the downloaded installer and drag "Spartan Student" into the Application folder
- 2) Answer affirmatively to all dialogues
- 3) When prompted, select the option for a Network (server-based) license
- 4) Set the license server to baldy.cls.montana.edu when prompted
- 5) Proceed through the installation of the license server "SafeNet" driver installation, answering affirmatively to all dialogues.