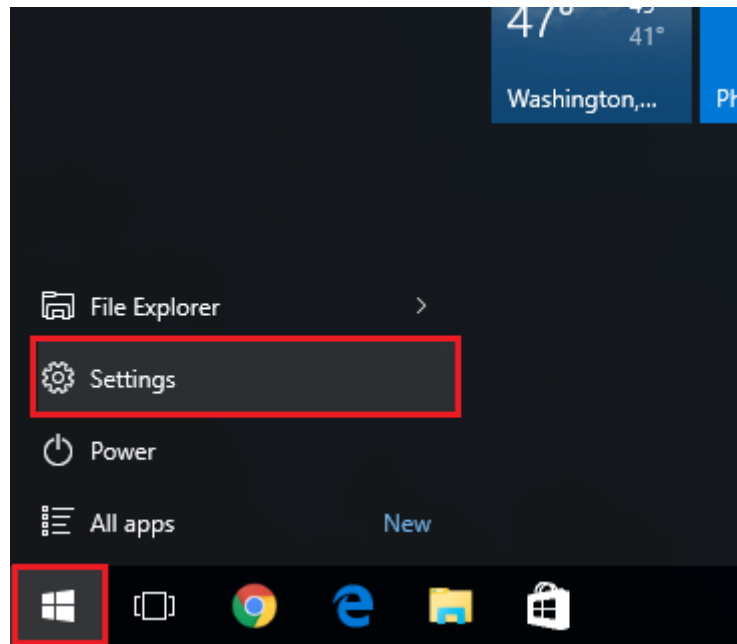
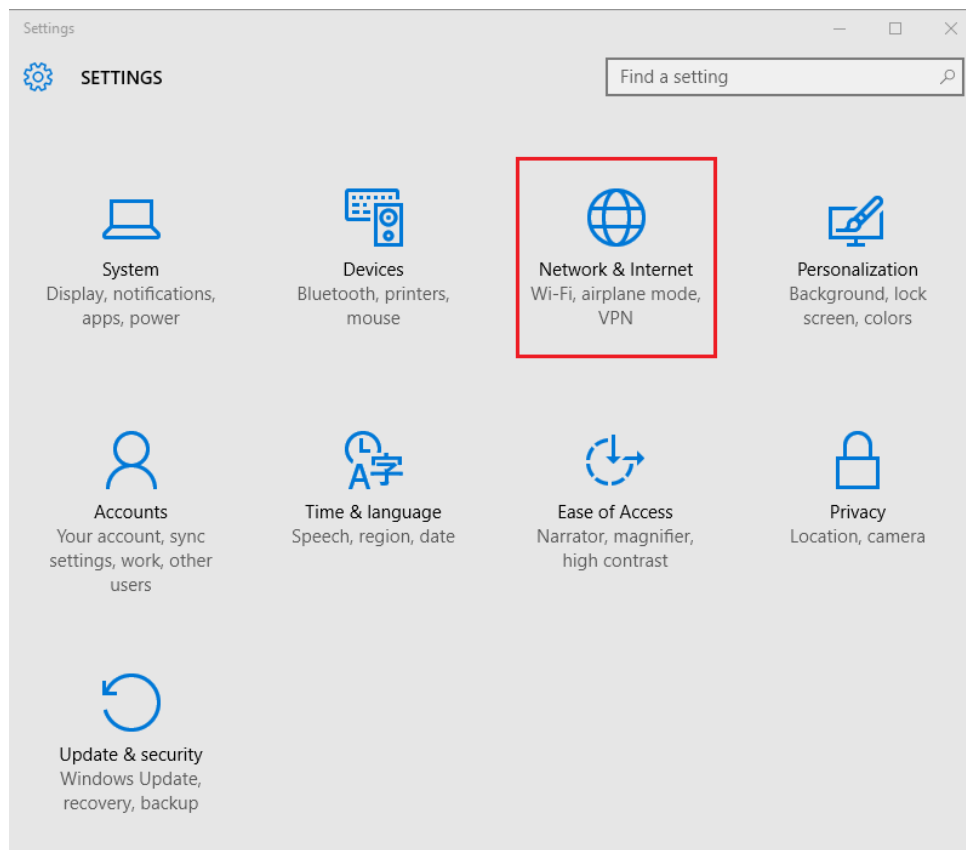


## College of Letters and Science Windows 10 VPN instructions.

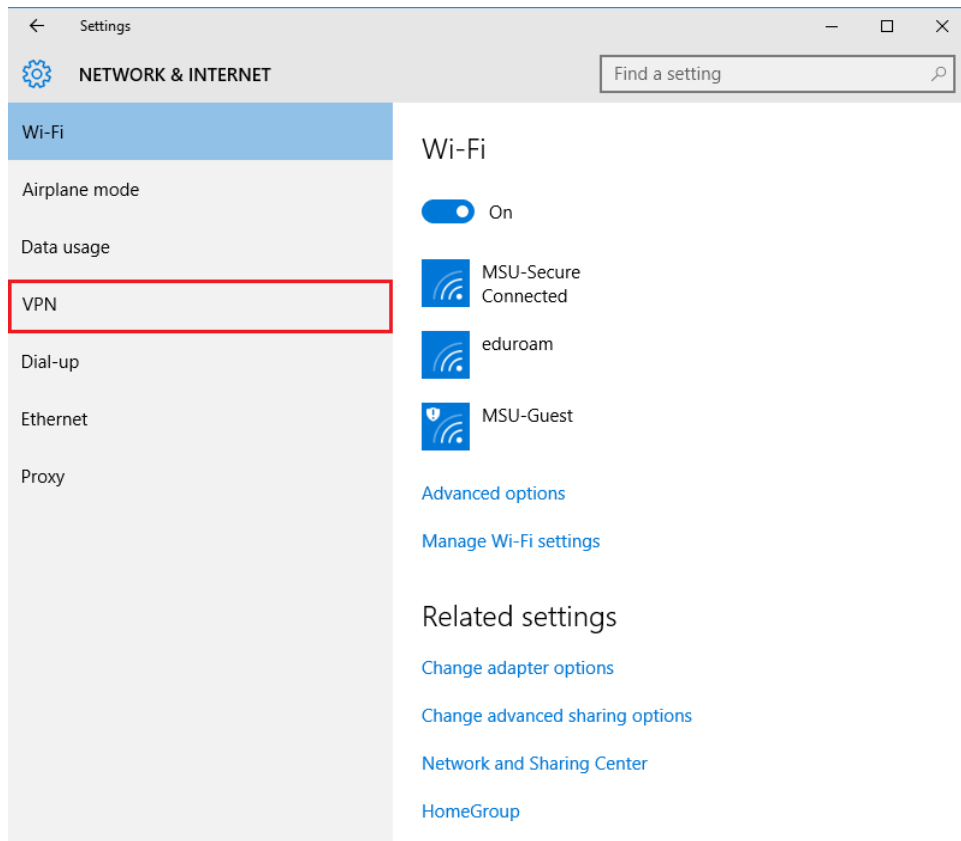
**Step 1:** Click the Start Menu in the lower left-hand corner of your desktop, then click “Settings”.



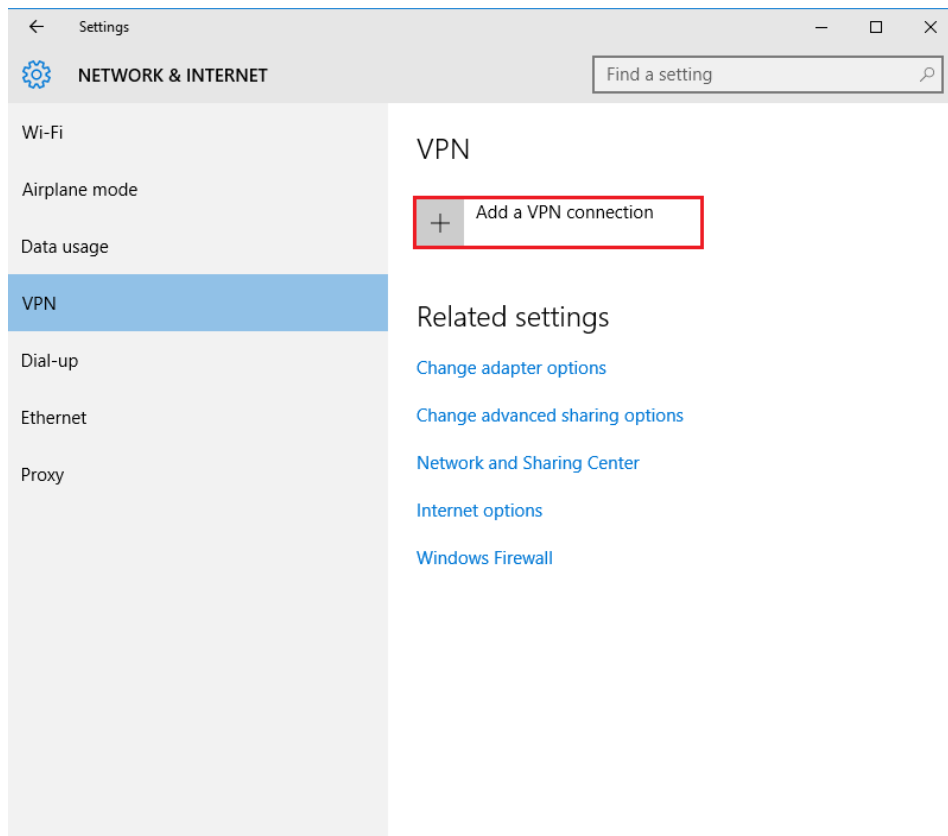
**Step 2:** Click “Network & Internet”



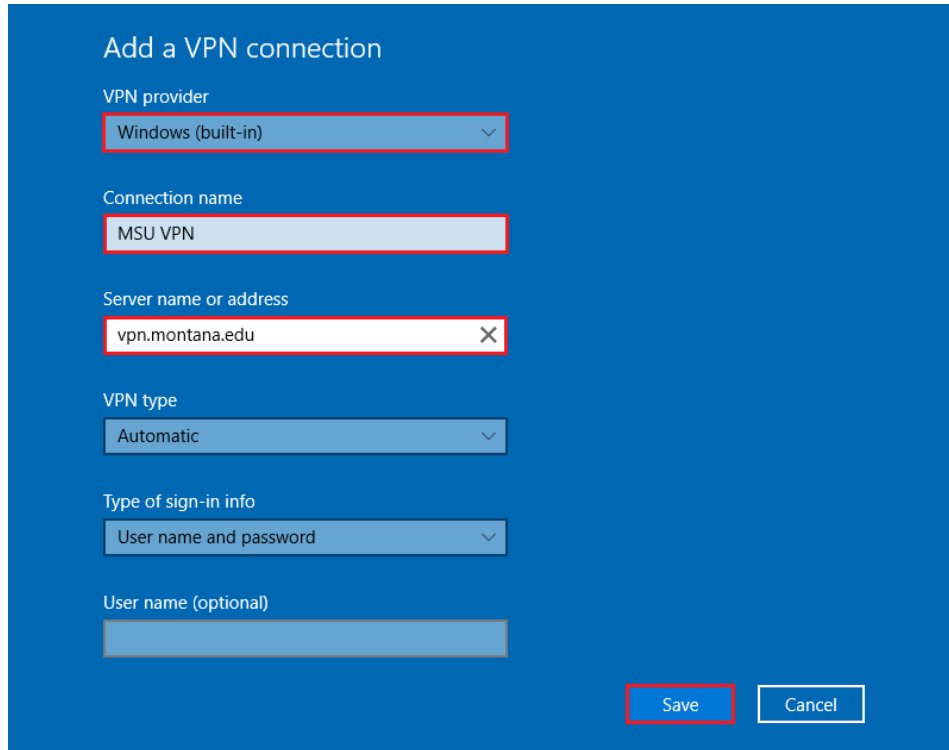
**Step 3:** Click “VPN”



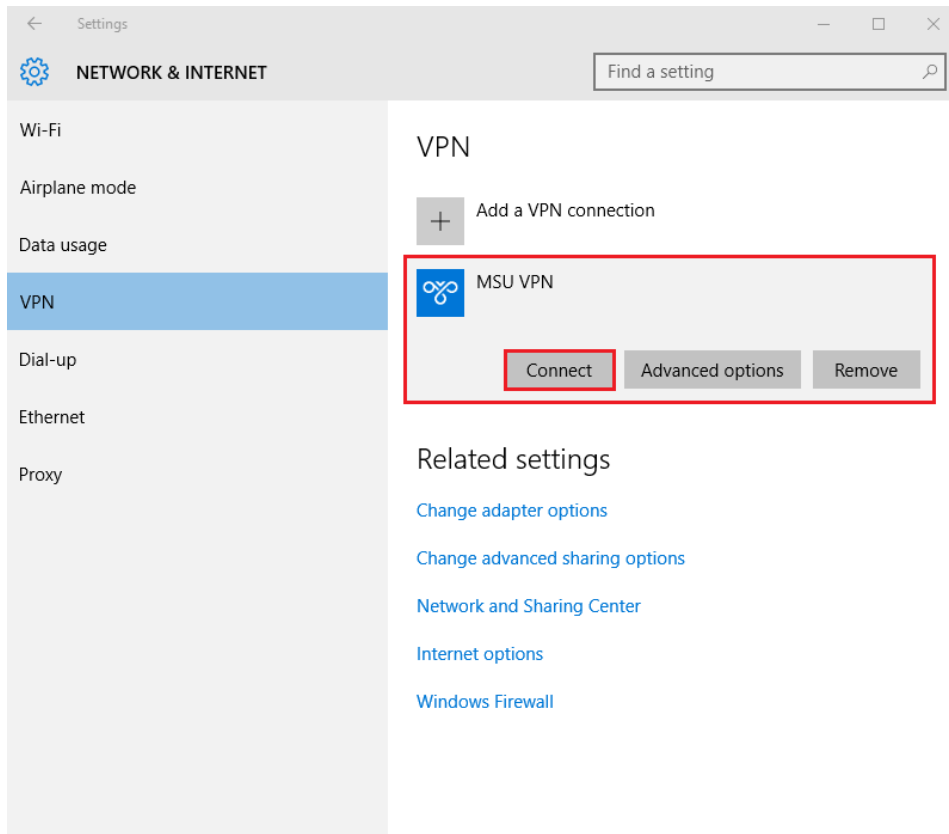
**Step 4:** Click “Add a VPN connection”



**Step 5:** Select “**Windows (built-in)**” for the VPN provider field. Enter “**MSU VPN**” in the Connection name field, “**vpn.montana.edu**” in the Server name field and then click “**Save**”.




**Step 6:** Click on the “**MSU VPN**” connection then click “**Connect**”



**Step 7:** Enter your “NetID” in the first field and your “NetID Password” in the second. Click “OK” and you are now connected!

Sign in

Sign in



Your\_NetID

••••••••••

Domain:

OK Cancel