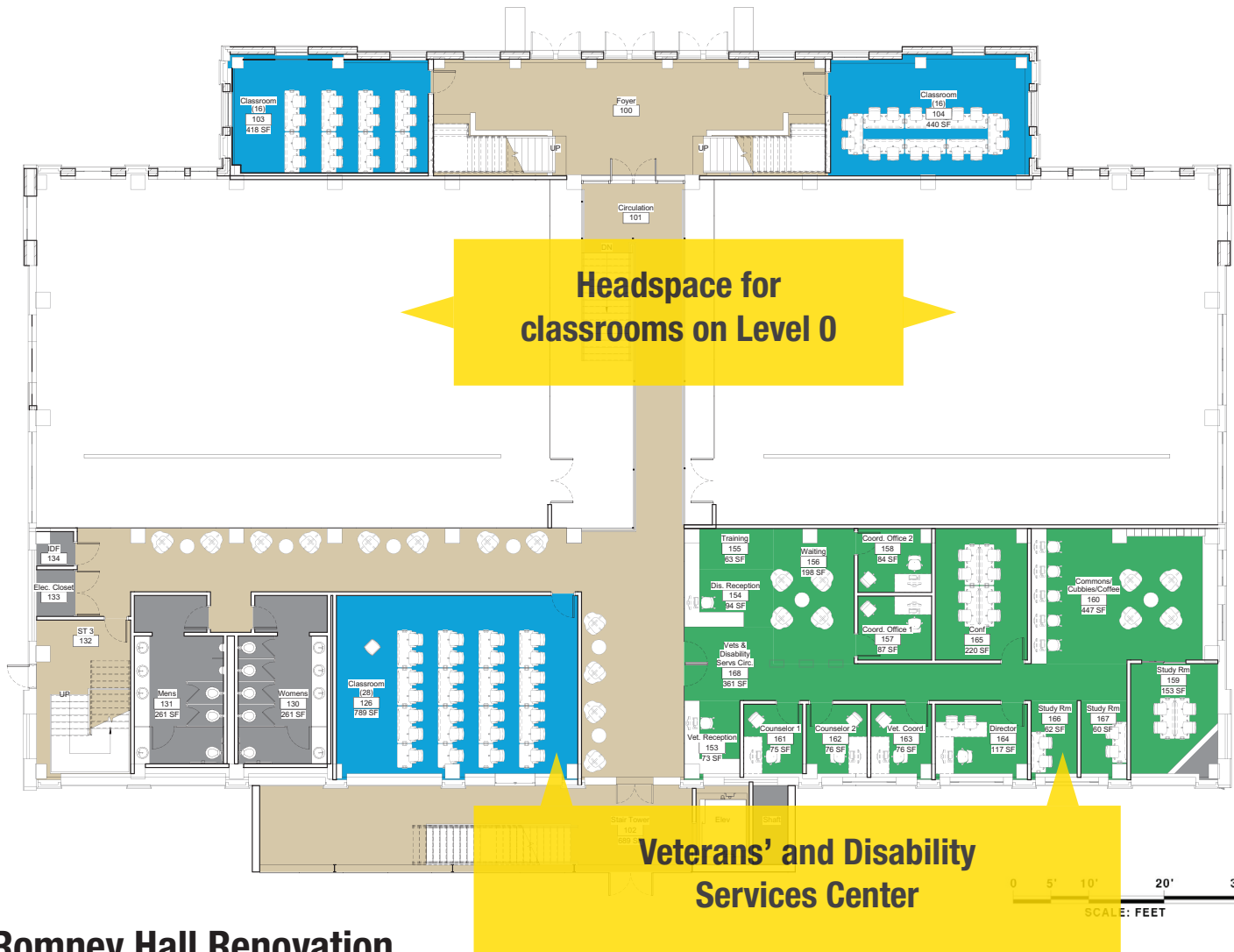


Level 0 | Romney Hall Renovation

NOVEMBER 28, 2016

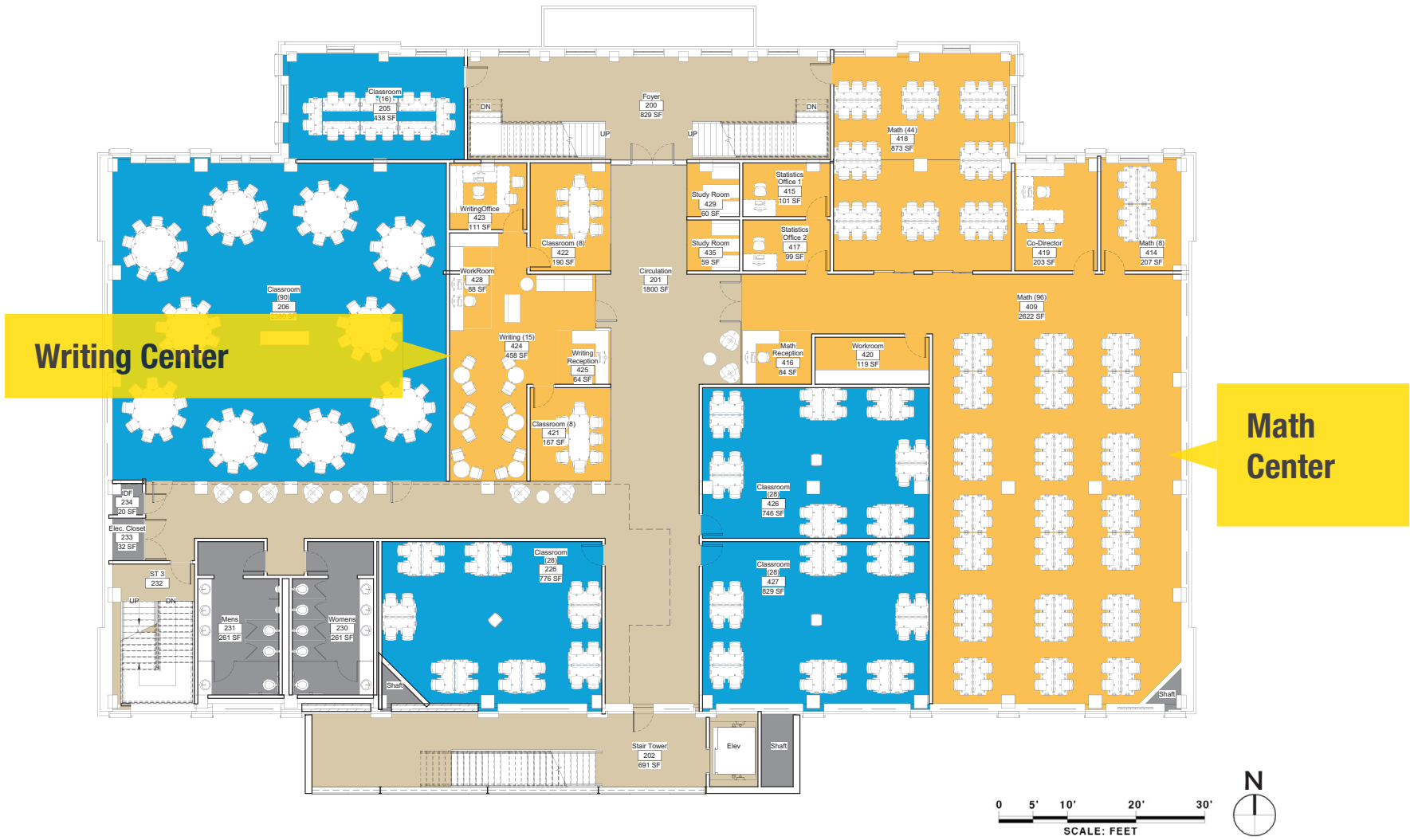


Level 1 | Romney Hall Renovation

NOVEMBER 28, 2016

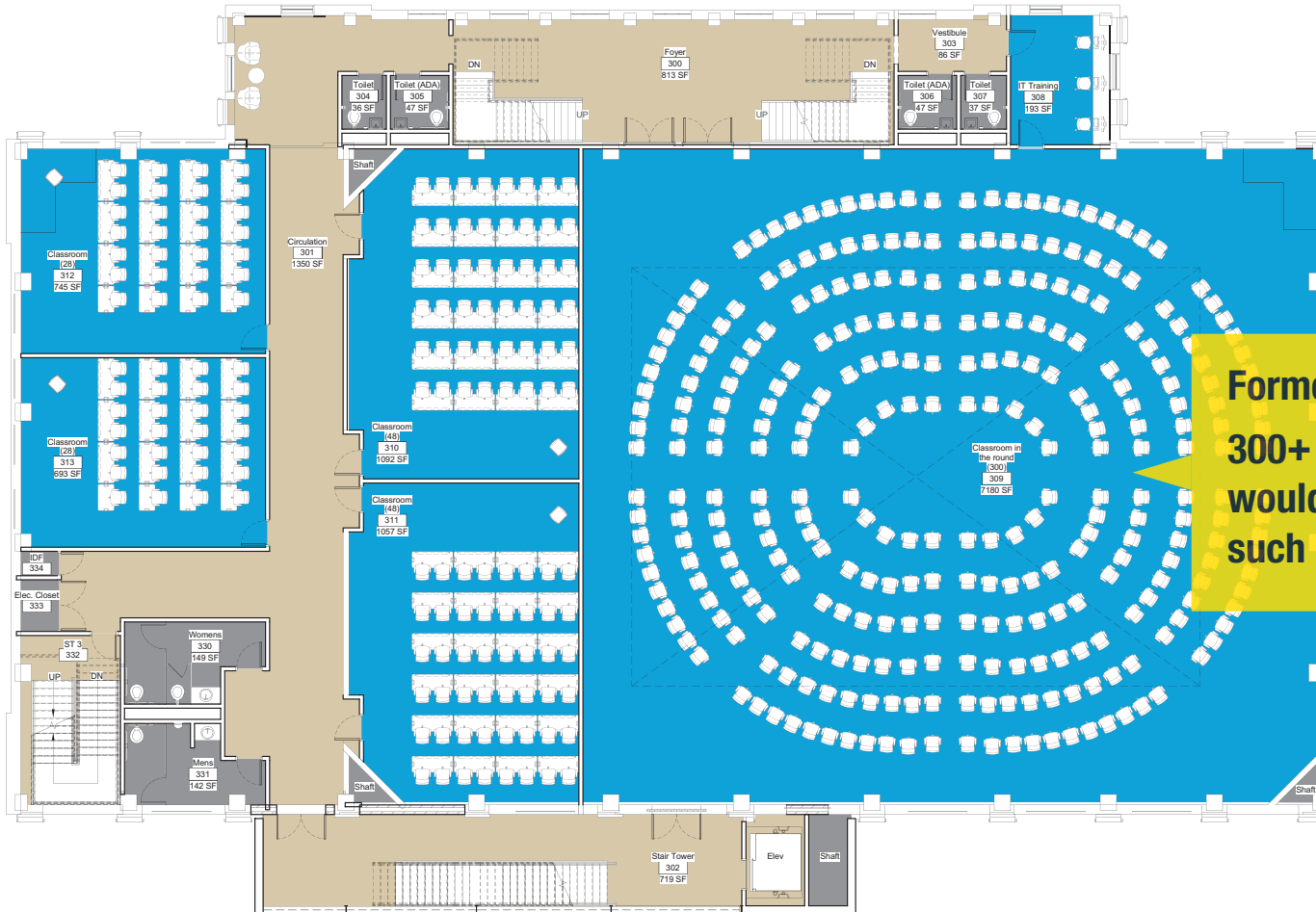


ARCHITECTS ENGINEERS



Level 2 | Romney Hall Renovation

NOVEMBER 28, 2016



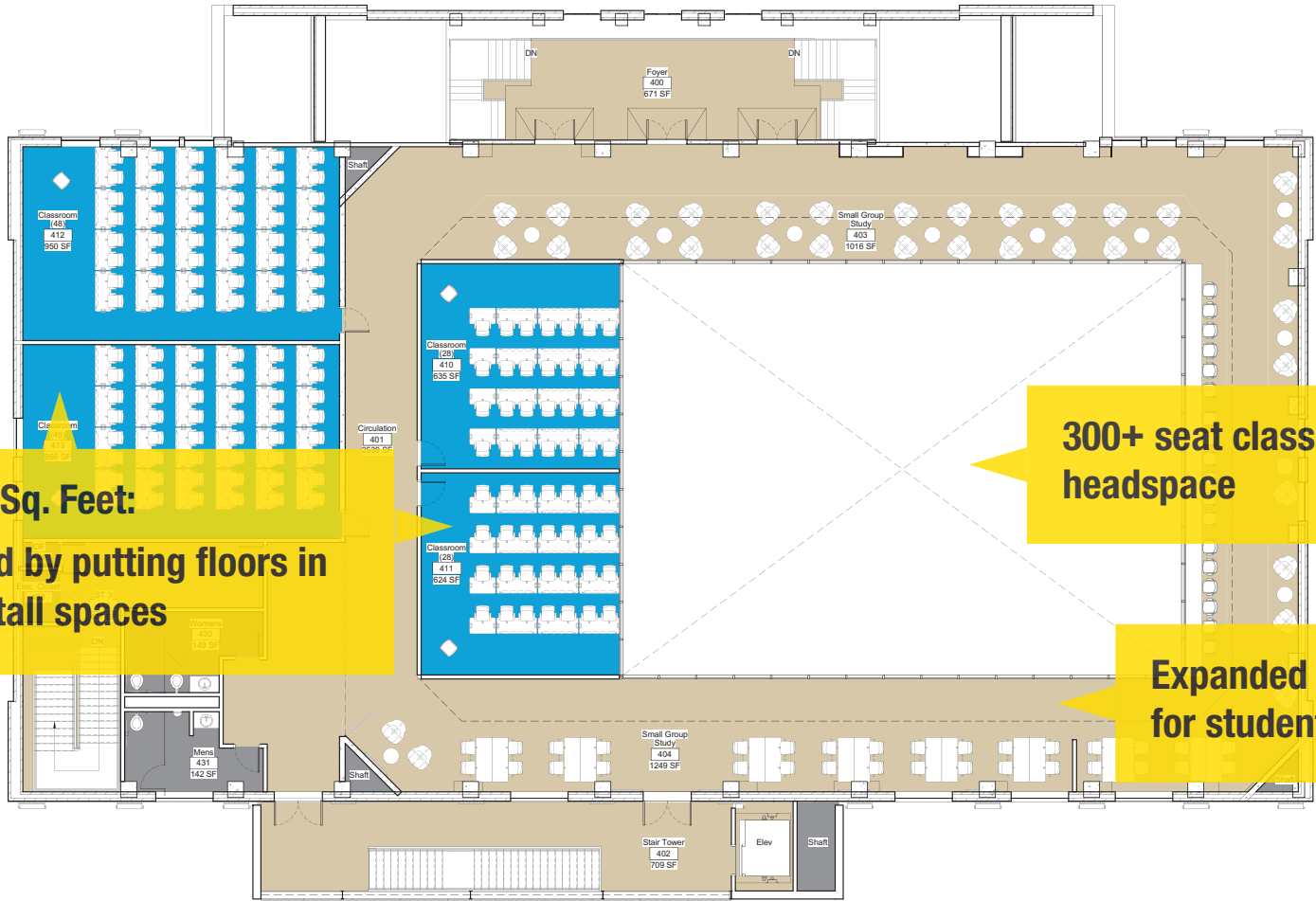
Former Gym Floor
300+ seat classroom
would be only second
such on campus



Level 3 | Romney Hall Renovation

NOVEMBER 28, 2016

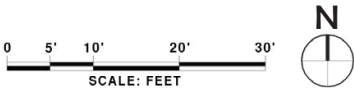




**All New Sq. Feet:
Captured by putting floors in
2-story tall spaces**

**300+ seat classroom
headspace**

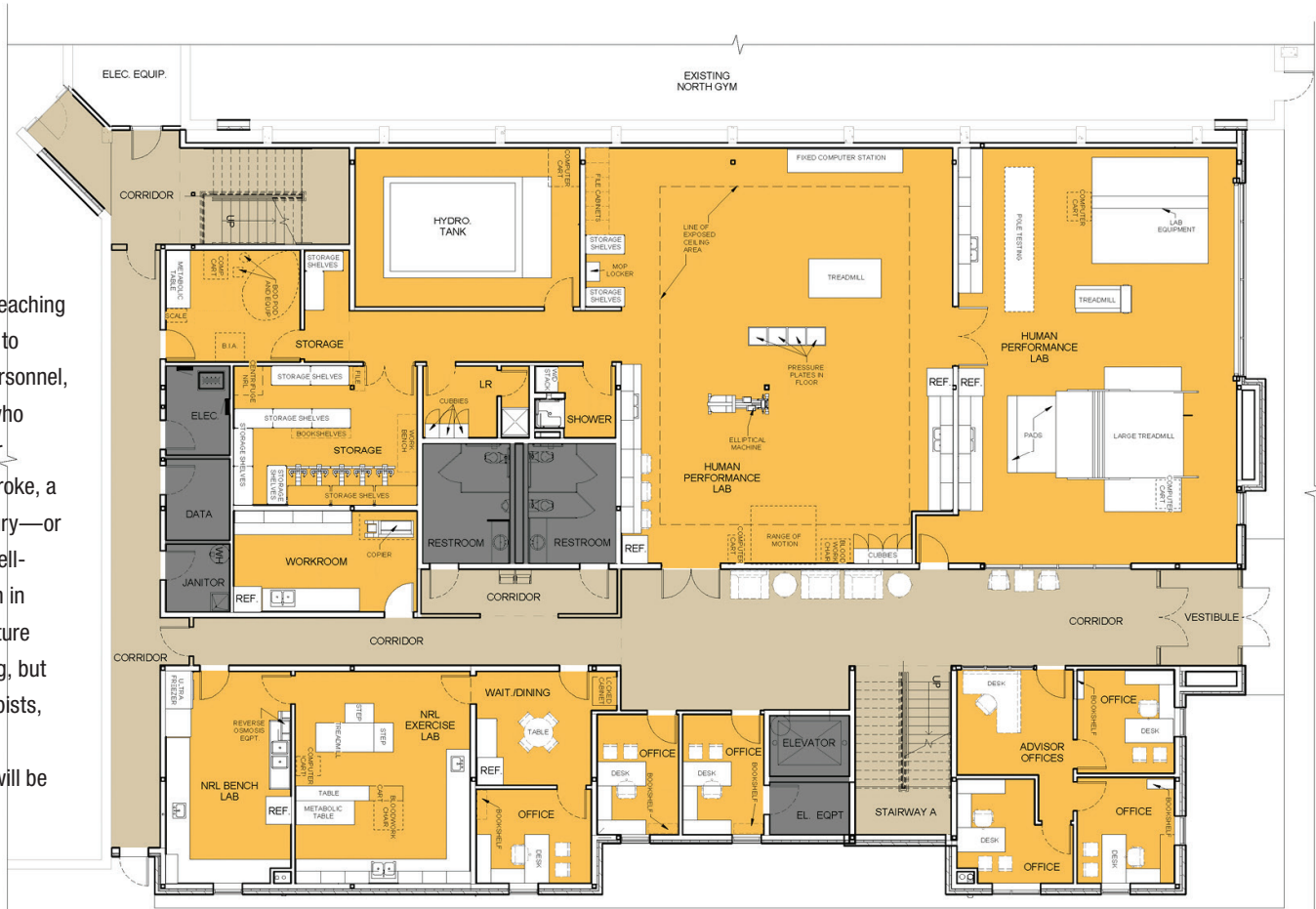
**Expanded mezzanine
for student study space**



Level 4 | Romney Hall Renovation

NOVEMBER 28, 2016

This facility will be used for teaching and research that is relevant to athletes, hunters, military personnel, as well as everyday people who are recovering from illness or injury—whether that be a stroke, a broken hip, or an athletic injury—or just trying to improve their well-being. Teaching and research in this facility helps prepare future health professionals including, but not limited to, physical therapists, occupational therapists, and physicians; and others who will be employed in health care.



Preliminary

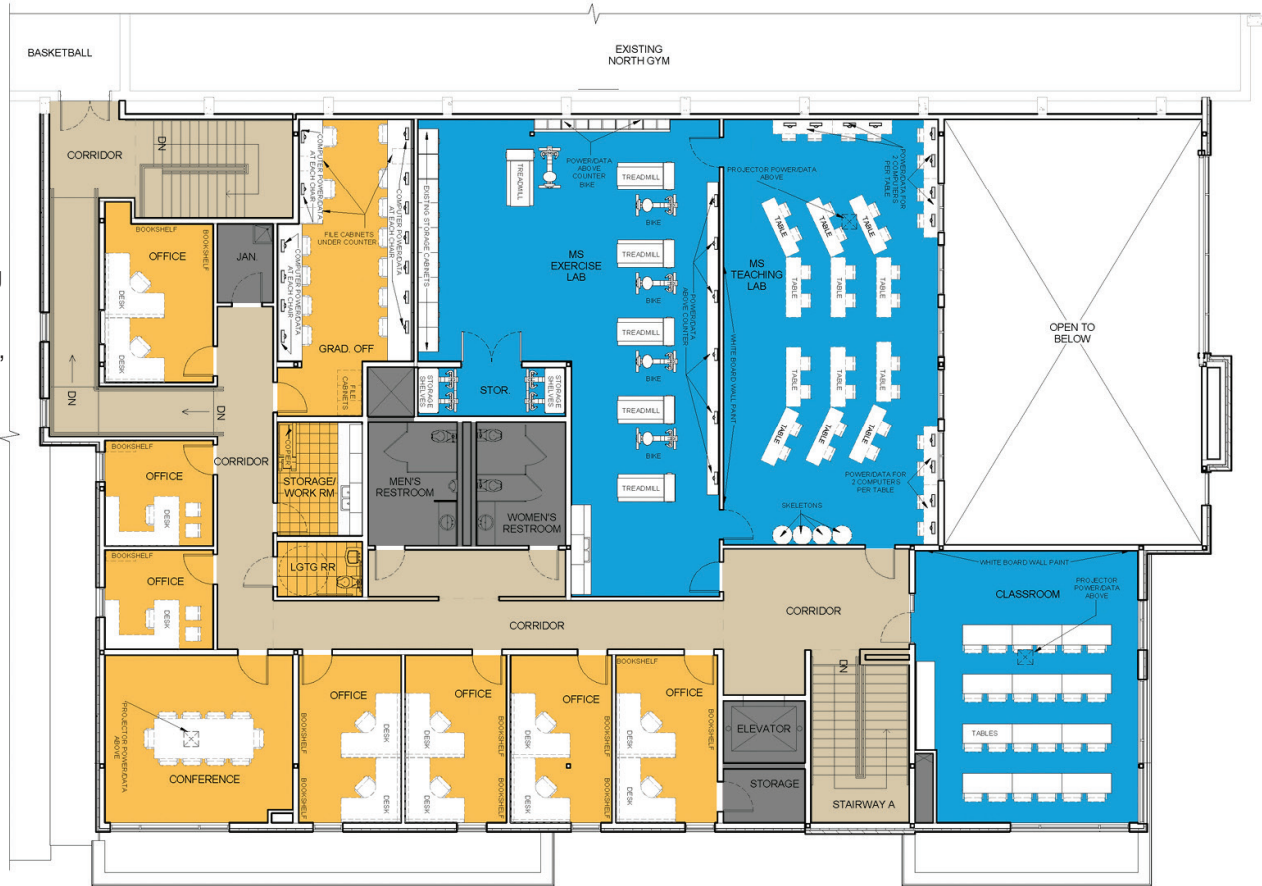
Level 1 | College of Education, Health & Human Development Addition

NOVEMBER 28, 2016



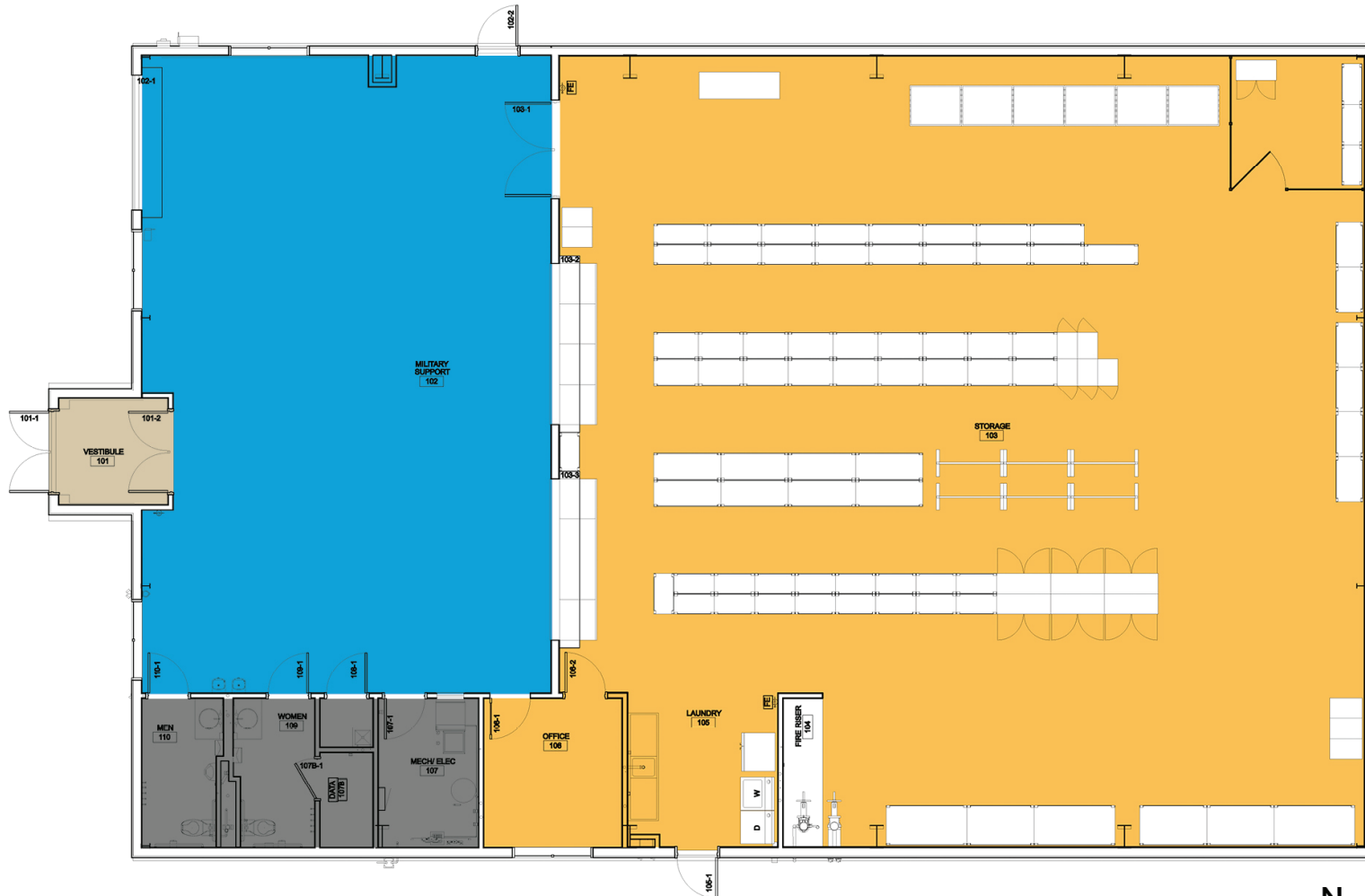
ARCHITECTS ENGINEERS

This facility will be used for teaching and research that is relevant to athletes, hunters, military personnel, as well as everyday people who are recovering from illness or injury—whether that be a stroke, a broken hip, or an athletic injury—or just trying to improve their well-being. Teaching and research in this facility helps prepare future health professionals including, but not limited to, physical therapists, occupational therapists, and physicians; and others who will be employed in health care.



Preliminary Level 2 | College of Education, Health & Human Development Addition

NOVEMBER 28, 2016



Preliminary ROTC Equipment Storage Facility or Incorporated Space

NOVEMBER 28, 2016



ARCHITECTS ENGINEERS