

Coaching Chronicles

News and Events for EMC Project Participants

In This Issue:

- Coaching Works!
- Round 2 of Assessments Set for May
- Professional Development for Coaches: Coming this Summer
- Your First Stipend ... When to Look for It

The PI's Corner BY DAVID YOPP

On the research front, results are coming in that show that mathematics coaching really works! Pat Campbell, the external evaluator for the Virginia Mathematics and Science Coalition, a National Science Project similar to EMC, is reporting that at the grade levels in the study, the elementary students of coached teachers are outperforming students of uncoached teachers on state assessments. Dr. Campbell is also finding that just placing a coach in a school is not enough; to realize the positive effects of coaching, the coach and teacher must interact.

The study Dr. Campbell describes is a small one (around 20 coaches per year tracked

over three years), but it is great news to hear about these positive findings. The findings make our project even more timely because of the scale and diversity of EMC. It makes me proud to be working with so many dedicated teachers and coaches. We now have 59 coaches and 177 teachers on board, which makes us one of the largest studies examining mathematics coaching.

Because of the commitment of our coaches and teachers, the data EMC is providing will make it one of the most influential studies of its kind in the United States. You are all involved in something big, and your efforts will shape the direction of mathematics coach-



David Yopp
EMC Principal Investigator
Asst. Professor, Montana State University

ing across the nation. Thanks again for being part of this important work!

Read the Campbell study:
[Click here.](#)



EMC Coaching Sessions Underway

By now all EMC coaches and teachers should be engaged in your initial coaching sessions, with the goal of completing four three-part sessions (pre-observation conference, classroom observation, post-

observation conference) by the end of this school year. Beginning next fall, coaches and teachers will complete a total of eight sessions for the 2010-11 school year, or roughly one each month. Four of these eight

sessions should cover the subject area of number sense and operations.

Questions? Contact your EMC District Leader or emc@math.montana.edu.

Keeping in Touch with EMC

We send out several important e-mails to participants throughout the year. Please be sure that our e-mails make it to your in-box and not your junk mail! (It may help to add emc@math.montana.edu to your address book.) If you ever have any changes to your e-mail address, your name, or your home mailing address (where we send your stipends), please send us a quick note to let us know.

Round 2 of Assessments Coming in May

The first round of participant assessments is complete, and already project researchers are making the first analysis of this important baseline data for the project. Thank you for all of your work! The overwhelming majority of our participants completed their assessments in a very timely fashion – in most cases within two weeks of the first e-mail. We'd like to see everyone's response time be that quick so that *everyone* finishes within a couple of

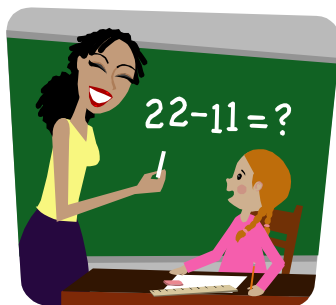
weeks, whenever possible. In some cases participants were unclear that they had more than one assessment to complete, so we'll do a better job next time with explaining what's required.

You may recall from orientation that in this first year we conduct two "pre" assessments to give us a double shot of this important baseline data at the outset of the project. Our second round of assessments will go out in

early May – that's right, in just a few weeks! You'll each receive an e-mail like last time with directions and links to the online surveys. Unlike the first round of assessments, which went out at different times depending on when your district had orientation, this time everyone will receive the assessments on the same day. If we can receive everyone's responses within a couple of weeks, we'll be able to finish well before summer break. And

remember, the sooner we get your responses, the sooner we can issue your second \$100 stipend!

We know you're all extremely busy, especially as your year winds down. Thank you in advance for your time and effort spent on this second round of assessments. After this second round, you'll only take online assessments *once* per year, with Round 3 scheduled for May 2011.



Classroom Observations Have Begun

For all EMC teachers, it's now time for the first classroom visit by your EMC district leader (i.e., your orientation presenter). Some of you

may have been visited already; others may have a date set. For the rest of you, your district leader will be in touch very soon to set up a convenient

time. Thank you very much for your cooperation in scheduling this important once-a-year observation.

Participant Stipends for Assessment Round 1

By now, most of you have received your \$100 stipend for completing the first round of online assessments. (If you took your assessments within the past 4-6 weeks, your check may be arriving shortly.) We'll send you a separate confirmation e-mail in a couple of weeks, by which time *everyone* should have received the first stipend. Until then, if you have any questions about your stipend, contact Project Director James Burroughs at emc@math.montana.edu.

Early Research Results and Media Coverage

Already our EMC Researchers have made presentations about the project at regional and national conferences, and we've received coverage from local media throughout

the six states where the EMC Project operates. As the project moves forward, researchers also will publish papers in national journals that detail important project advances.

You can find information on all of the above at our dedicated Web page devoted to results: [Click here](#).

Summer PD for Coaches Begins in July

The first half of our project coaches ("Group 1") will undergo a week of professional development this summer, either in Bozeman, Mont., on July 19-23, or in Denver on August 2-6. Those coaches who were sorted randomly into Group 2 will

begin their professional development this fall with online support, discussions and resources, followed by their own in-person PD during the summer of 2011. (All coaches received notification about their group designations last fall.) Coaches in

Group 1 will receive detailed information about this summer's events in the coming weeks. If at any time you have questions about professional development, please contact Project Director James Burroughs at emc@math.montana.edu.