

# Cremation

## MSU Extension MontGuide

200201 HR

Updated April 2017



1

# Focus

- Personal Concerns
- Montana & Federal Regulations
- Costs

2

# Authors



**Marsha A. Goetting**  
Professor & Extension Family  
Economics Specialist



**Keri D. Hayes**  
Extension Economics  
Associate Specialist

3

# Historical Info

- First Crematory
  - 1876
  - Pennsylvania



4

# Cremation Acceptance



National	49%
Nevada	76%
Washington	75%
Oregon	74%
Hawaii	73%
Maine	71%
Montana	71%

5

# Why Choose Cremation??



- Save Money 30%
- Save Land 13%
- Simpler & More Convenient 8%
- Personal Preference 6%
- Body not in Earth 6%

Cremation Association of North America

6

## Why??



- Concerns for environment
- Cold-weather constraints
- Ease of transportation to distant burial sites

7

## Who Regulates?

- Montana Board of Funeral Service
  - Administrative Rules
  - Standards
  - Licenses



8

## Federal Level



- Federal Trade Commission (FTC)
  - Trade Regulation Rules
  - Itemized Price Info

9

## Who can authorize the removal of my body to a crematory?

- Vital Statistics Bureau
  - DPHHS Form
  - *"Authorization for Removal, Transportation, & Final Disposition of a Dead Body"*



10

## Signature of One:

- Coroner
- Mortician
- Physician or Designee
- Certified Advanced Practice Registered Nurse



11

## Who Submits the Form?

- Mortician
  - With appropriate signatures



12

## 37 Licensed Crematories



- Anaconda, Big Timber, Billings, Bozeman, Butte, Dillon, Glendive, Great Falls, Hamilton, Havre, Helena, Kalispell, Lewistown, Libby, Malta, Miles City, Missoula, Plains, Polson, Ronan, & Whitehall

13

## What are the Costs of Cremation?

- Arranged through crematory:
  - \$2,000 - \$4,000
- Arranged through funeral home:
  - \$1,500 - \$3,000



14

## Cremation Costs

- Funeral Homes
  - Must provide disclosure form
    - Itemizing Expenses



15

## Does my body have to be embalmed?

- Not required unless certain funeral arrangements selected.
  - Private or public viewing



16

## Casket Required?

- Not in Montana
  - Nationwide
    - 90% of cremations do not have casket



17

## Montana Requirements

- Enclosed, rigid, leak proof container
  - Fiberboard
  - Pressed Wood
  - Cardboard



18

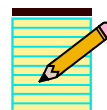
## FTC Rules

- **Must disclose in writing & make available:**
  - **Alternative container**
  - **Unfinished wooden box**



19

## Authorization



- **Crematory must have written cremation authorization form**
  - **Signed by authorization agent**

20

## Authorizing Agent

- **Person legally entitled to determine final disposition of human remains**



21

## Priority Order

- **Unless other directions provided by deceased**
  - **Spouse**
  - **Majority Adult Children (*not all*)**
  - **Parent**
  - **Close relative of deceased**



22

## In Absence of Family



- **Personal Representative**
- **Public Administrator**
- **Others as Designated by Montana Board of Funeral Service**

23

## Methods of Disposition Directions

- **Prepaid funeral contract**
- **Written disposition direction**
- **Signed affidavit**
- **Videotaped disposition**



24

## Further Information

- **What Are Your Rights Over Your Remains**
  - **Search by title**
  - [www.msuextension.org](http://www.msuextension.org)



25

## What is done with the body before cremation?



26

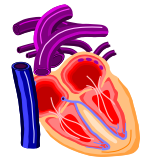
## Personal Possessions

- **Remove**
  - **Jewelry**
  - **Mementos**



27

## Pacemakers



- **Remove**
  - **Could damage**
  - **Authorizing agent held responsible**

28

## Cremated with body

- **Prostheses**
- **Mechanical**
  - **Devices**
  - **Implants**

29

## Identifying Disc

- **Identifying metal disc attached to each receptacle containing a body.**
- **During cremation disc secured on control panel outside the chamber.**

30

## My ashes or others?

- Number of identifying metal disc written on outside of receptacle

12

31

## Which survivors are ashes given to?

- Individual specified by authorizing agent on cremation authorization form



32

## No Authorizing Agent



- **After 90 days:**
  - Crematory has the authority for disposition of remains

33

## What should family do with ashes?



34

Now you have everything!



35

## Businessman

- Put my ashes in an envelope and mail them to IRS. Write on envelope..."



36

# Urns



- **Hardwood**
- **Stone or Marble**
- **Bronze, copper, or other metals**
- **Biodegradable**

37

# Urn Burial

- **Columbarium niche**
- **Urn Garden**



38

# Keepsake Memorial

- **Jewelry**
  - **Pendant**
  - **Ring**
- **Miniature Cast**
  - **Bronze Urn**



39

# What to do with ashes?

- **Bury**
- **Scatter**
- **59% preferred to be scattered rather than buried**



40

# Scattering--Where

- **30% water**
- **20% land**



41

# Where to Scatter?

- **Privately owned lands**



42

## Church-Owned Lands

- **Ask Permission**



43

## City Lands, Parks, & Lakes

- City Attorney
- City Commissioner
  - Permission?
  - Forms?



44

## County Lands, Parks, & Lakes

- County Attorney
- County Commissioner
  - Permission?
  - Forms?



45

## School Trust Lands

- Montana Department of Natural Resources & Conservation (DNRC)



46

## School Trust Lands



- Sections 16 & 36 Township
- Land use permit (\$25)
- Area Office fee (varies)

47

## State Rivers & Lakes

- Montana Department of Environmental Quality
  - No permit required



48



## State Lands & Parks



- **Montana Fish, Wildlife & Parks**
  - Not allowed unless authorized by commissioner

49

## Tribal Trust Lands

- **7 reservations in Montana**
  - Tribal Community Council
  - General Council



50

## Air



- **Federal Aviation Administration**
  - As long as no hazard to persons or property
    - 866-835-5322

51

## Hub Wheelman's Daughter

- *"I keep a small vial of his ashes in my glove compartment. I am nowhere near the driver he was, but at least he's still spending a fair amount of time on the road."*



52

## Hot Air Balloonist

- *"....released my wife's ashes from her balloon high in the desert where she broke the world's record...I think she is smiling."*



53

## Bureau of Land Management Lands

- **No federal permits are necessary**
  - Unless commercial enterprises



54

## Federal Waters

- **At sea**
    - **3 nautical miles**
    - **Burial/Scatter at Sea Notification Form**
- [www.epa.gov](http://www.epa.gov)



55

## National Cemeteries

- **Veterans**
  - **Spouses**
  - **Dependent children**



56

## Montana

- **List from:**
- **VA Medical & Regional Office Center**
  - **Fort Harrison, MT**
  - **877-468-8387**



57

## National Forests

- **Forest Service**
    - **No rules or regulations**
- **Except for California**



58

## National Parks

- **Each national park has conditions for granting permission**
- **Contact**
  - **Superintendent of Park**
  - **[www.nps.gov](http://www.nps.gov) Scroll down to *Find a Park***



59

## Yellowstone National Park

- **Yellowstone Visitor Service Office**
  - **307-344-2107**



60

## Glacier National Park

- **Undeveloped areas**

- **Notify Special Park Uses Office**

- **406-888-7800**



## Can I have my ashes mailed in Montana?

- **U.S. Postal Service**
- **Only by Registered Mail**
- **Return Receipt Services**



## Ship-Out of State

- **Include:**

- **Copy of cremation authorization form**



## Shipping Container

- **Sift-proof**
- **Sealed**
- **Durable**



## No shipment of cremated remains by



- **United Parcel Service**
- **Federal Express**

## Prefer Cremation?

- **Place request in writing**
- **Preneed Authorization**



## Funeral Director



- *“When planning to honor and memorialize a person who has died, the family should plan a funeral, memorial, celebration of life or gathering that best suits their religious beliefs, traditions, lifestyle & budget.”*

67

## Acknowledgements

- **Montana Board of Funeral Service**
- **Montana Funeral Directors Association**

68

## Montana Department of...

- **Public Health & Human Services**
- **Environmental Quality**
- **Fish, Wildlife & Parks**

69

## Further Info

- **Montana Board of Funeral Service**
  - [www.funeral.mt.gov](http://www.funeral.mt.gov)
- **Montana Funeral Directors Association**
- **Local Funeral Home**
- [www.mfda.net](http://www.mfda.net)

70

## National Info

- **AARP**
  - [www.aarp.org](http://www.aarp.org)
- **Cremation Association of North America (CANA)**
  - [www.cremationassociation.org](http://www.cremationassociation.org)

71

## National Info

- **Funeral Consumers Alliance (FCA)**
  - [www.funerals.org](http://www.funerals.org)
- **Funeral Service Educational Foundation (FSEF)**
  - [www.fsef.org](http://www.fsef.org)

72

## National Info

- International Crematory & Funeral Association
  - [www.iccfa.org](http://www.iccfa.org)
- National Funeral Directors Association (NFDA)
  - [www.nfda.org](http://www.nfda.org)
- Selected Independent Funeral Homes (SIFH)
  - [www.selectedfuneralhomes.org](http://www.selectedfuneralhomes.org)

## Definitions of Terms in Cremation Industry

*At the end of MontGuide*

# Cremation

## MSU Extension MontGuide

200201 HR

*Updated April 2017*

