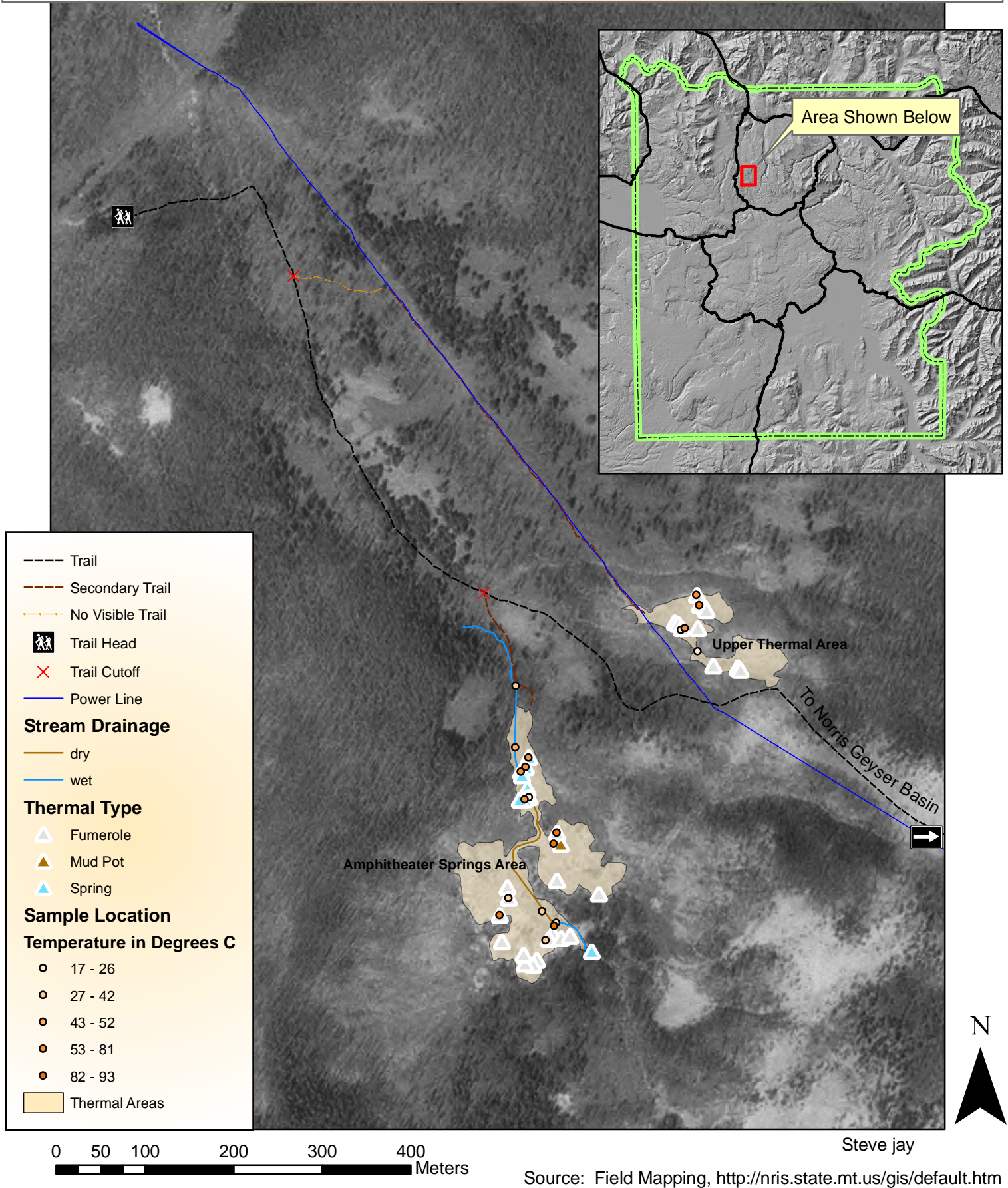


# Thermal Features and Access in the Amphitheater Spring Area

Along the Solfatara Trail in Yellowstone National Park



- Trail
- Secondary Trail
- No Visible Trail
- Trail Head
- ✗ Trail Cutoff
- Power Line

### Stream Drainage

- dry
- wet

### Thermal Type

- Fumerole
- Mud Pot
- Spring

### Sample Location

#### Temperature in Degrees C

- 17 - 26
- 27 - 42
- 43 - 52
- 53 - 81
- 82 - 93

Thermal Areas

0 50 100 200 300 400  
Meters

Source: Field Mapping, <http://nris.state.mt.us/gis/default.htm>