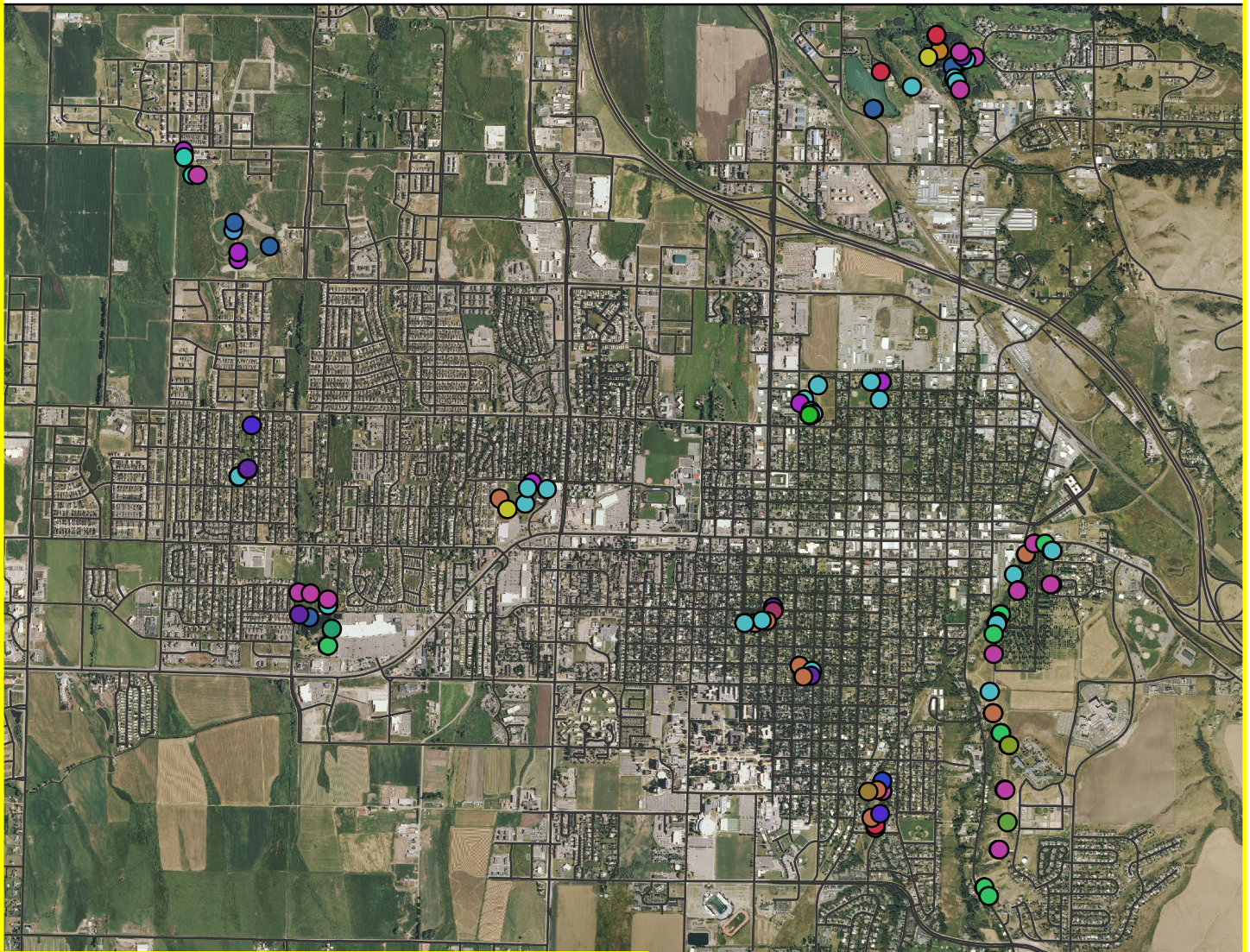


# Fall Species Bird Survey: Bozeman, MT

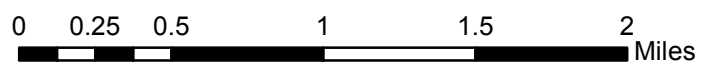
12/4/2013



## Legend

### species

- |                             |                        |
|-----------------------------|------------------------|
| ● American tree sparrow     | ● house sparrow        |
| ● Barrow goldeneye          | ● house wren           |
| ● Canada geese              | ● magpie               |
| ● European starling         | ● mallard              |
| ● blackbird                 | ● mountain bluebird    |
| ● chickadee                 | ● owl                  |
| ● coot                      | ● pygmy nuthatch       |
| ● crow                      | ● red-winged blackbird |
| ● dusky grouse              | ● robin                |
| ● grey crowned rosy finch   | ● robins               |
| ● hairy or downy woodpecker | ● rock pigeon          |
| ● hairy woodpecker          | ● unknown              |
|                             | ● widgeon              |



**Cartographer:** Amber Knutson  
**Sources:** NRIS, MSL, Gallatin County GIS