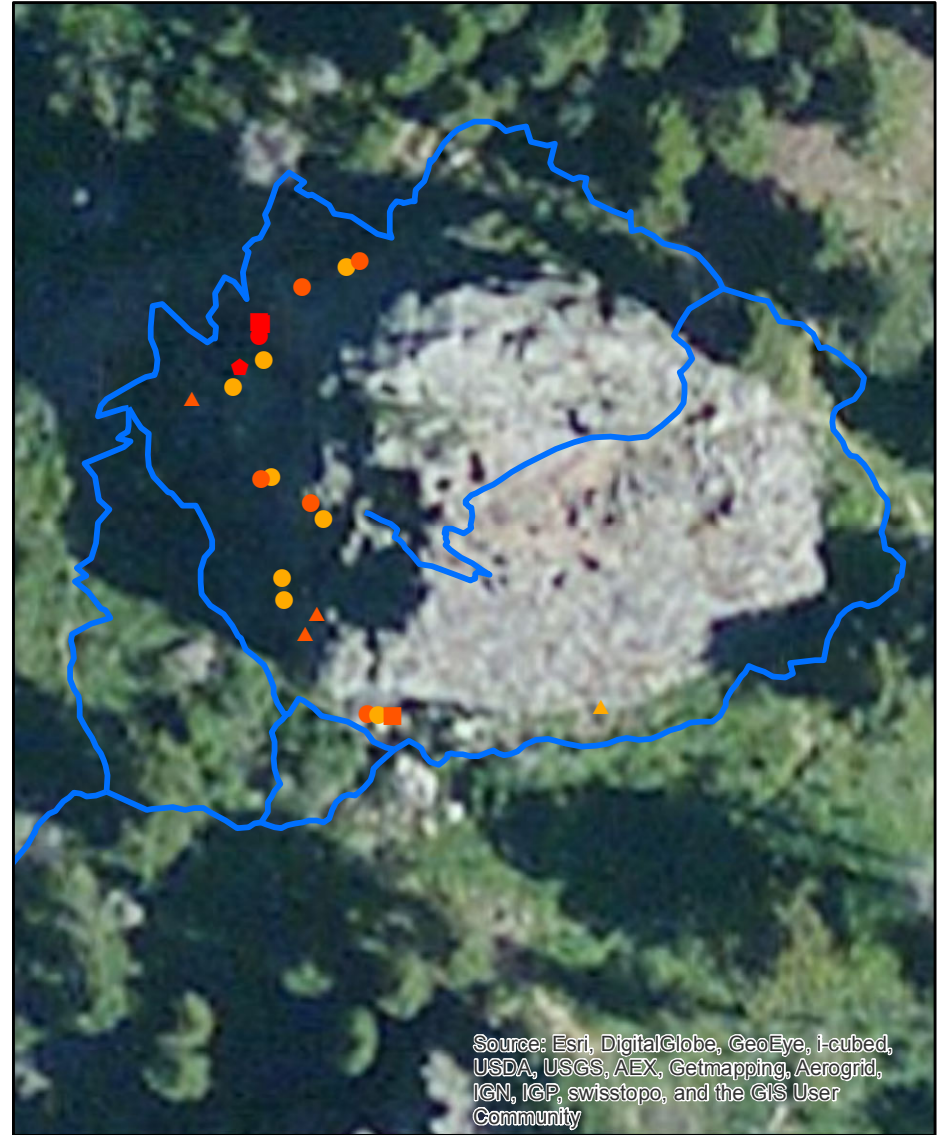
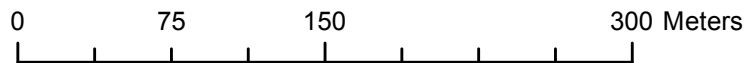


Practice Rock



Map Features

- Trail
- Roads
- Parking

Climbing Type

- Trad
- ▲ Toprope
- ◆ Sport
- Mixed

Rating

- 5.8 and below
- 5.9 - 5.10
- 5.11 and above

Mapped by- Russell Callahan
 Data Credits- Montana NRIS,
 ESRI Digiglobe, Southwest Montana
 Climbing Guide