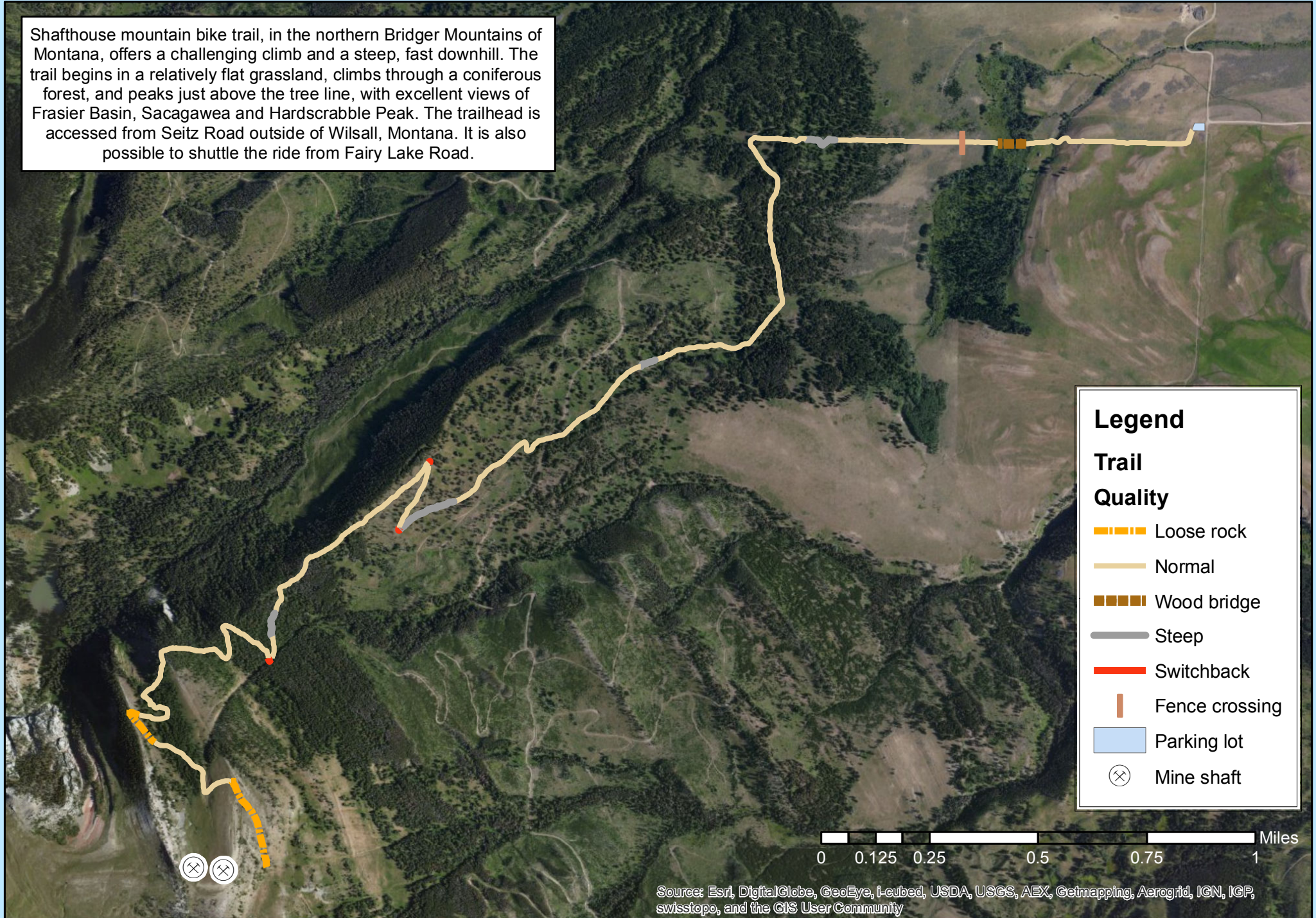


Shafthouse Mountain Bike Trail











Shafthouse mountain bike trail, in the northern Bridger Mountains of Montana, offers a challenging climb and a steep, fast downhill. The trail begins in a relatively flat grassland, climbs through a coniferous forest, and peaks just above the tree line, with excellent views of Frasier Basin, Sacagawea and Hardscrabble Peak. The trailhead is accessed from Seitz Road outside of Wilsall, Montana. It is also possible to shuttle the ride from Fairy Lake Road.

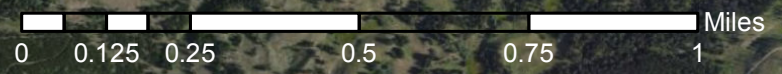


Legend

Trail

Quality

-  Loose rock
-  Normal
-  Wood bridge
-  Steep
-  Switchback
-  Fence crossing
-  Parking lot
-  Mine shaft



Source: Esri, DigitalGlobe, GeoEye, i-cubed, USDA, USGS, AEX, Getmapping, Aerogrid, IGN, IGP, swisstopo, and the GIS User Community