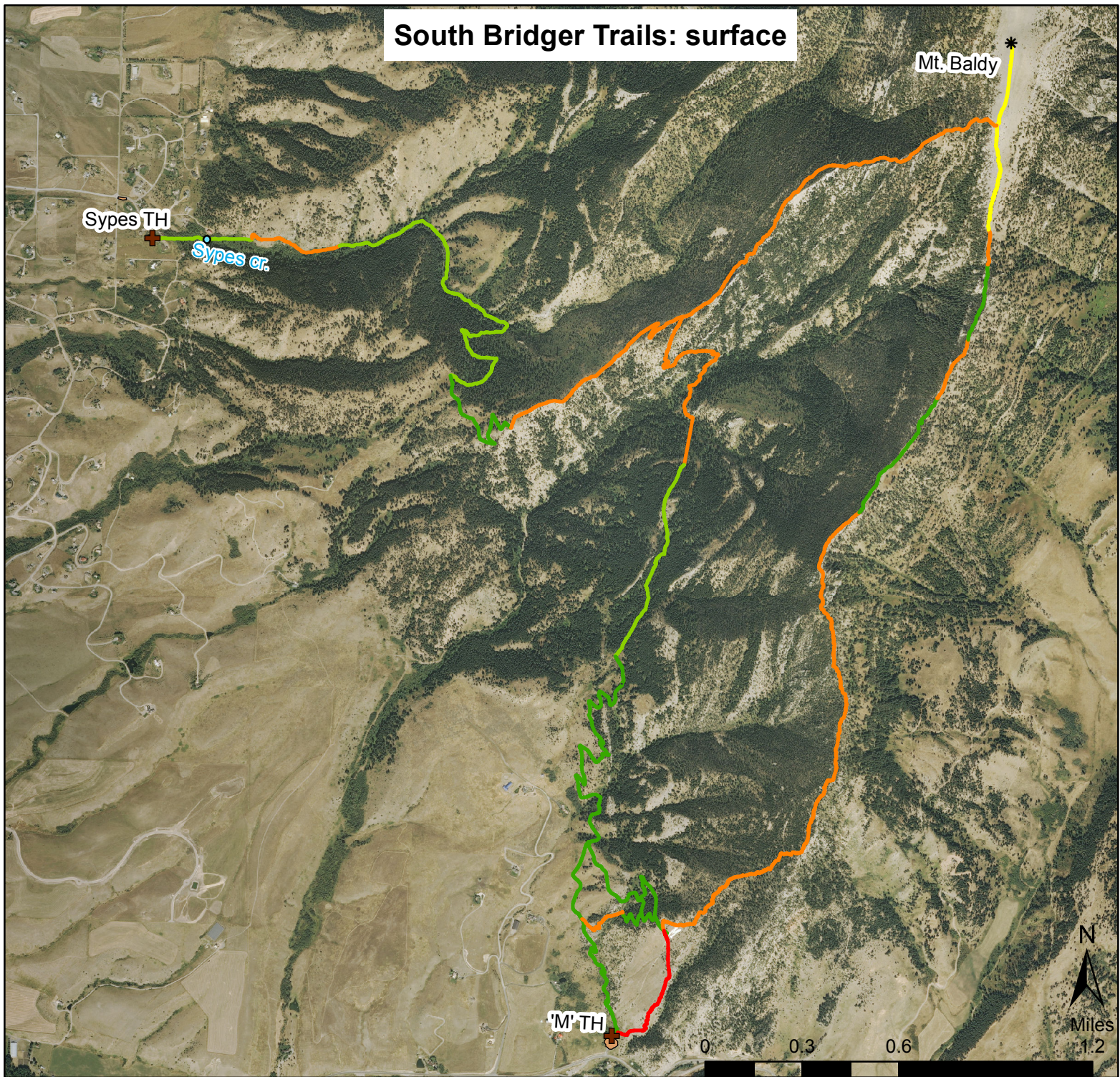


South Bridger Trails: surface



Trails in the southern portion of the Bridger Range are evaluated for surface type and gradient. Trail surfaces are grouped into the following categories where the indicated surface type is the predominant feature. Surfaces are ranked from green to red such that red is most technical.

Smooth Dirt - Surfacer is smooth and packed, lacking significant debris.

Dirt with Exposed Rock or Roots - Surfacer is mostly smooth dirt with exposed roots or rocks that require attention.

Small Talus - Surface is covered in talus debris about an inch in size.

Frequent Scattered Rock - Surface is frequently broken up with rock outcrops or large debris piles.

Very Rocky or Large Talus - Surface is defined by rock debris or large unpacked talus.

Surface Category

Smooth dirt

Dirt with exposed rocks or roots

Small talus

Frequent scattered rocks

Very rocky or large talus

* Peak

TrailHea

WaterCro

Lot

GPS data by:
Max Shchemelinin.
Aerial photo and elevation by:
Montana NRIS.
12/02/2013