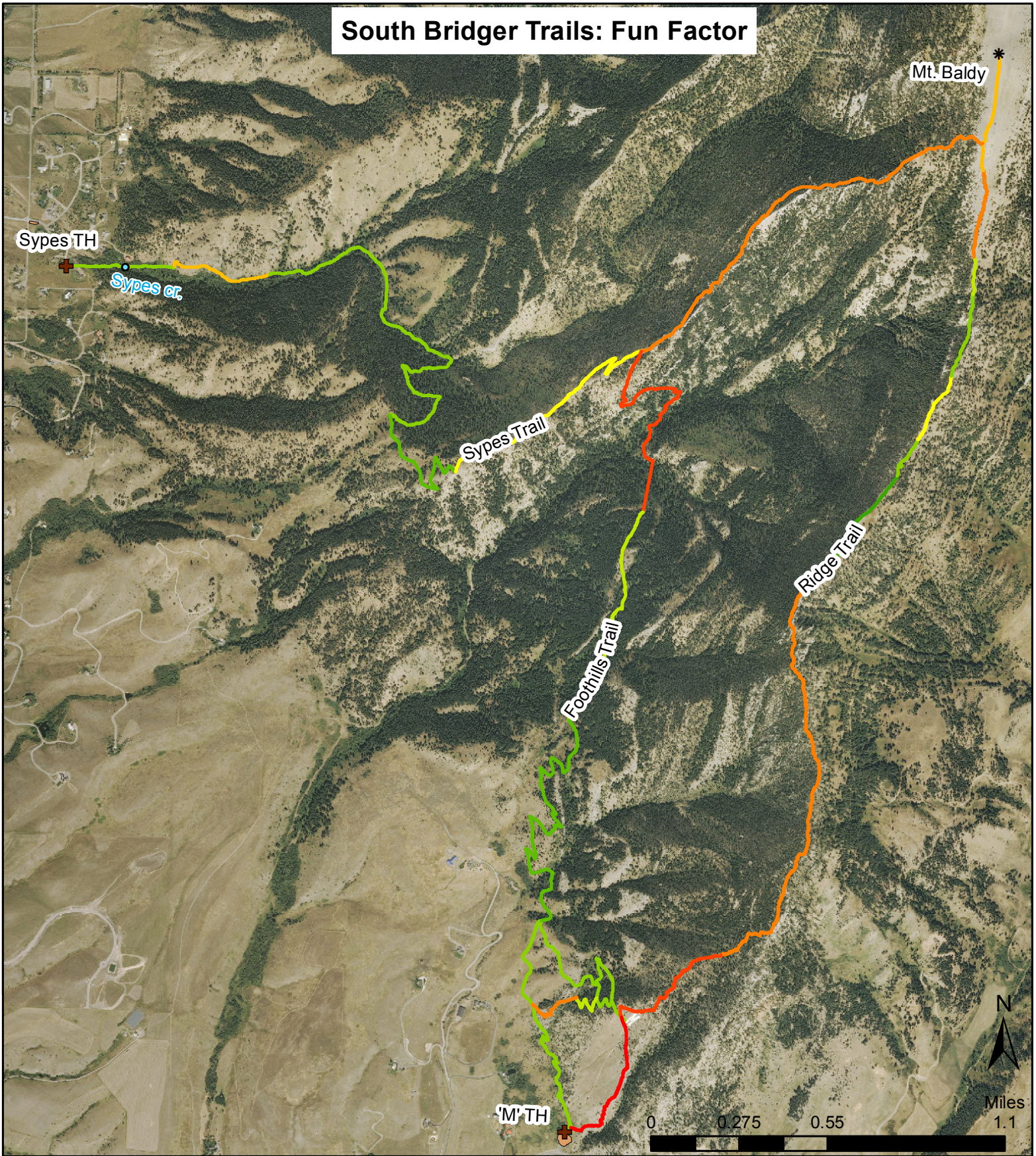


South Bridger Trails: Fun Factor



Fun Factor:

Trails are considered most fun when very steep and technical. Fun Factor is therefore defined as the sum of the trail gradient category and surface category. Fun factor ranges from green (boring) to red (very fun).

* Peak
⊕ TrailHea
• WaterCro
■ Lot

GPS data by:
Max Shchemelinin.
Aerial photo and elevation by:
Montana NRIS.
12/02/2013