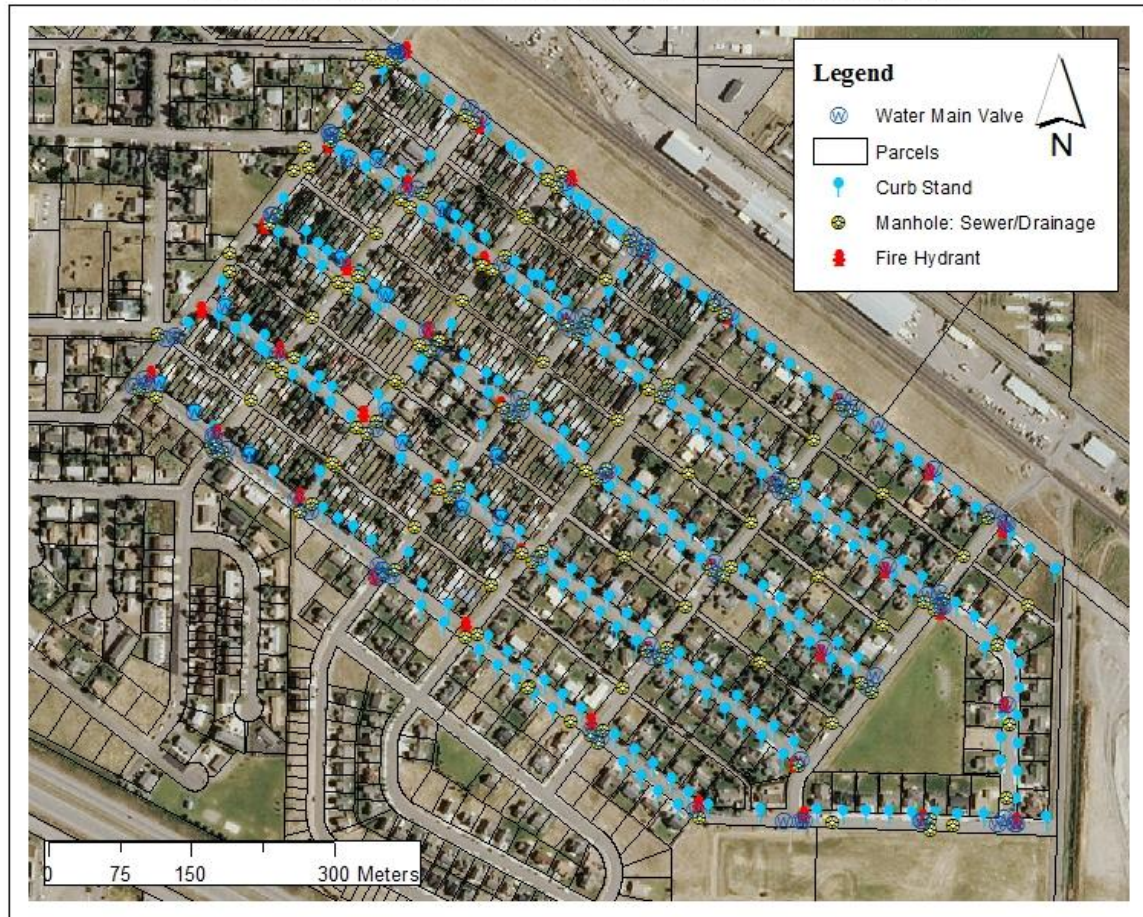


BELGRADE WATER WORKS CURB STAND MAP FOR FERRIS ADDITION & 1ST AND 2ND HALVERSONS SUBDIVISIONS

This map is only demonstrative of the Ferris Addition and Halversons 1st and 2nd Subdivisions area and general location of the features collected. A smaller scale map is submitted for reference by the Belgrade Water Works Department to locate curb stands. Features collected include curb stands (of utmost importance), manholes, water main valves, and fire hydrants.



Dallas Ott and Mike Everett
GPHY 357 Fall 2014 project GPS data/ November 2014

Gallatin County GIS: http://www.gallatin.mt.gov/public_documents/gallatincomt_gis/