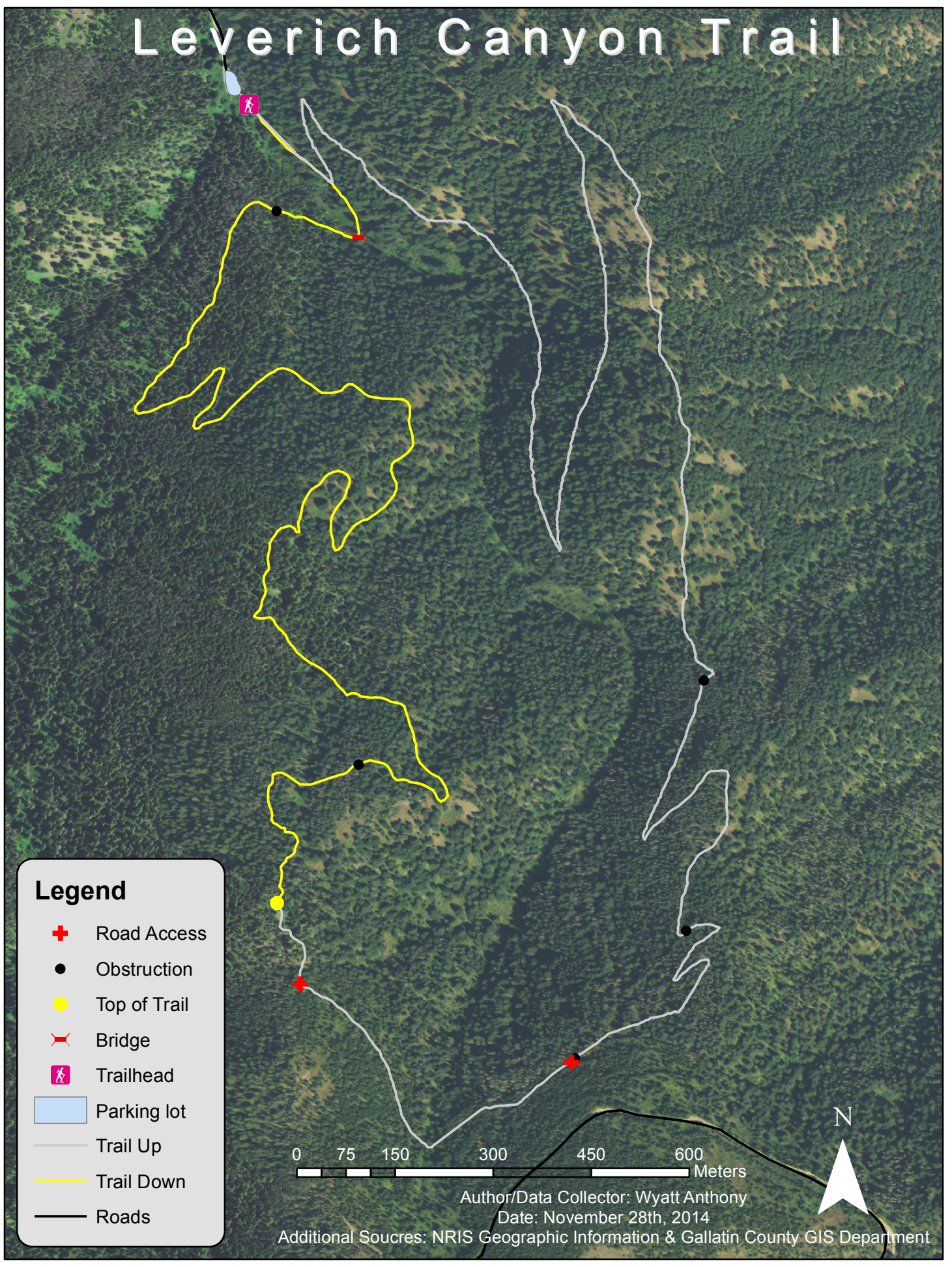





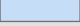
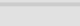




Leverich Canyon Trail



Legend

-  Road Access
-  Obstruction
-  Top of Trail
-  Bridge
-  Trailhead
-  Parking lot
-  Trail Up
-  Trail Down
-  Roads

0 75 150 300 450 600 Meters

Author/Data Collector: Wyatt Anthony

Date: November 28th, 2014

Additional Sources: NRIS Geographic Information & Gallatin County GIS Department