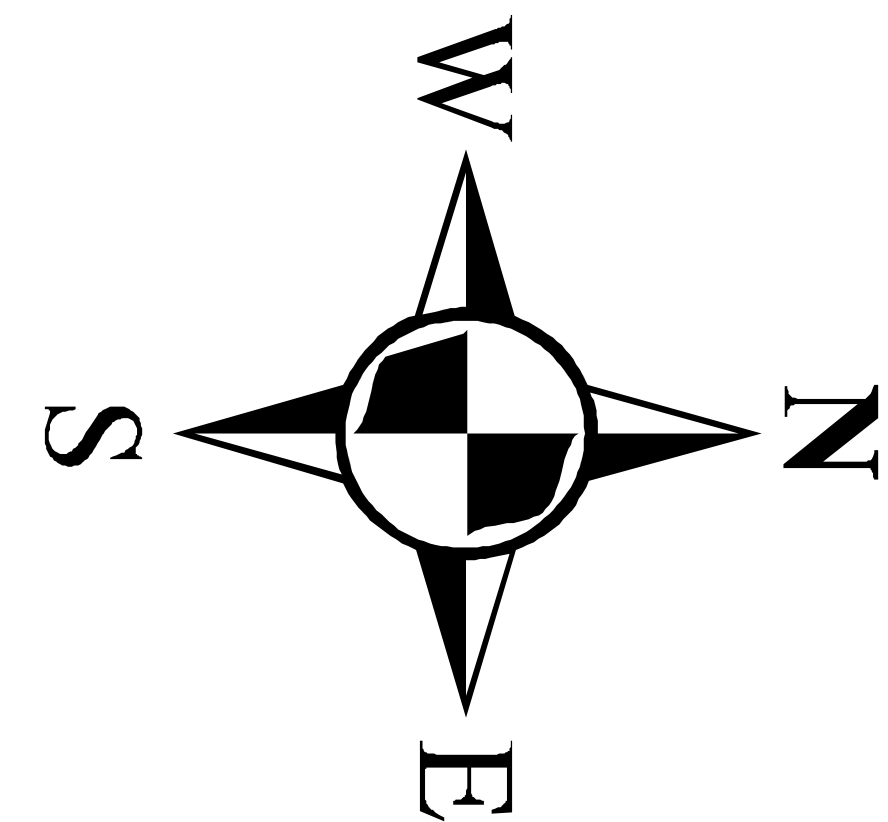
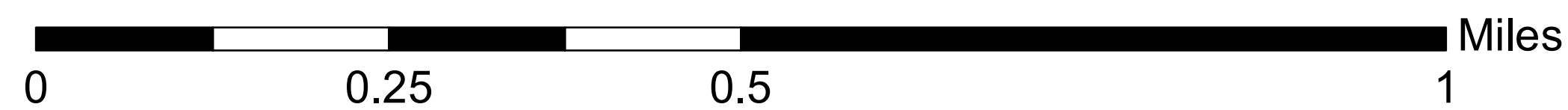
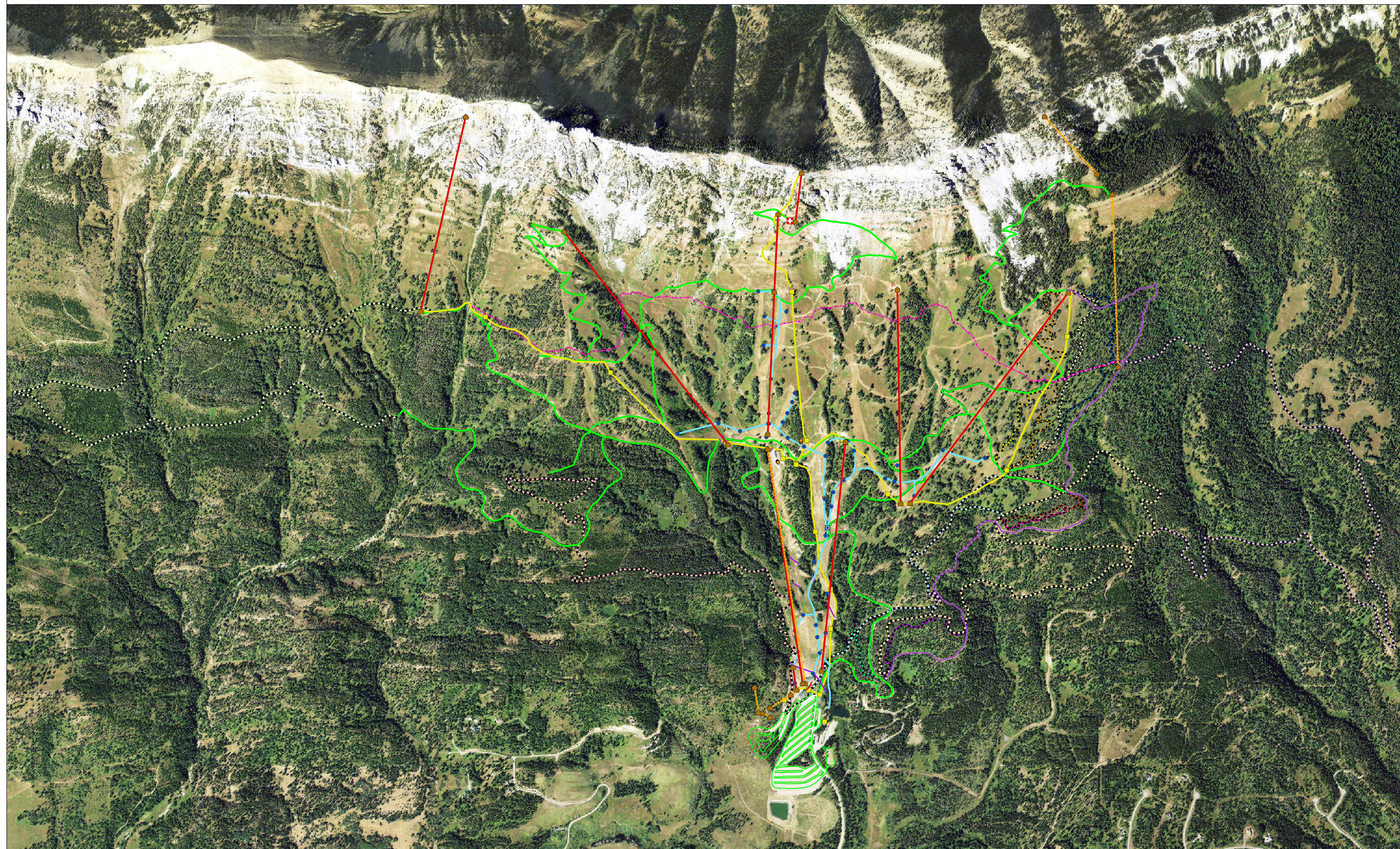


# Bridger Bowl Ski Area Infrastructure Map - 2015



- |                |                      |                             |                     |
|----------------|----------------------|-----------------------------|---------------------|
| Ski Patrol     | Chairlifts           | <b>Mountain Bike Trails</b> | Huckleberry         |
| Lift House     | Future Chairlifts    | Alpine 1                    | North               |
| Water Hydrants | Roads/Parking        | Alpine 3                    | Sawmill             |
| Pump House     | Buried Water Line    | Alpine 4                    | Sawmill to Barbwire |
| Utility Boxes  | Culverts             | Barbwire East               | South               |
| Road Gate      | Buried Utility Line  | Bradley 1                   | Timmy East          |
| Buried Tanks   | Forest Service Trail | Bradley 2                   | Timmy West          |
| Power Poles    | Timmies Road         | Gunmount                    |                     |

This map depicts features of Bridger Bowl's infrastructure. The data was collected during the fall semesters of 2012, 2013, 2014, and 2015 for the Advanced GPS mapping class at Montana State University. This is intended as a general-purpose reference map for mountain operation and planning purposes. Not intended as any form of legal survey and is not comprehensive.

Data was collected using Trimble Geo7X Receivers. Map update and 2015 data collection by Taylor Barkan, Paul Badolski, Jackie Tiffany, and Allison Pardis. 2014 data collection by Logan Jackson and JT Schmitt. 2013 data collection by Justin Marlen and Evan Schock. 2012 data collection by Chris Krouse and Todd Kerby.

Source for Reference Layer: NAIP