

THE GRADUATE SCHOOL | MONTANA STATE UNIVERSITY

# Psychology

## DEGREES OFFERED

**Ph.D. in Psychological Science**

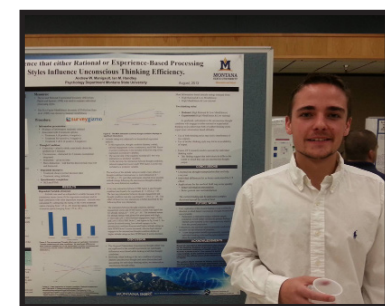
We offer a research-oriented Doctorate of Philosophy (Ph.D.) degree in Psychological Science. Through advanced coursework, thesis and dissertation credits, research colloquia, and individualized mentoring from faculty, this program is designed to train graduate students to conduct psychological research in the following areas: cognitive psychology, social psychology, learning, health psychology, physiological psychology, and developmental psychology. Our Ph.D. program in psychological science prepares students for research-oriented careers in academia and applied settings.

## ADMISSION

All successful candidates must demonstrate knowledge of the fundamentals of psychology, as well as undergraduate-level training in statistics and research methods. Students with a Bachelors Degree may apply to the Ph.D. program with the understanding they will be completing a full graduate program culminating in a Doctor of Philosophy in Psychological Science. The Graduate School application process can be completed on-line at <http://www.montana.edu/gradschool/admissions/apply.html>. As part of the application process, you must submit a 1-2 page letter of intent/personal statement that summarizes your academic background in psychology or related field, career plans, research experience, research interests, and why you are applying to Montana State University's Ph.D. program in psychological science.

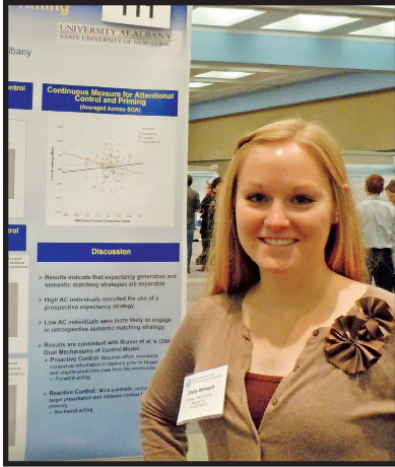
Please be aware the Psychology Department requires applicants submit Graduate Record Exam Scores (General test, which yields a Verbal and Quantitative score). The GRE Psychology Subject Test is not required, but recommended. Other materials are required for the application process; you can view the list of requirements online at: [www.montana.edu/psychology/gradprogram/application](http://www.montana.edu/psychology/gradprogram/application).

continued



Department Address:  
Department of Psychology  
325 Traphagen Hall  
PO Box 173440  
Bozeman, MT 59717-3440  
Tel: (406) 994-3801  
<http://www.montana.edu/wwwpy/gradprogram/application.html>

## Psychology, continued



Images:

Front bottom left and back top: Graduate students present their research at academic conferences.

Back middle: Graduate students receive advanced research training.

Back bottom: Graduate students enjoying the outdoors near Bozeman, MT.

html. For detailed admission requirements, you can review the Admission Policies and Application Requirements on The Graduate Schools website. The closing date for receipt of completed applications is January 1. Successful applicants must have their applications accepted by The Graduate School (with departmental endorsement) before an individual is considered a graduate student at MSU. For further information you can fill out the inquiry form on The Graduate School website.

### PROGRAM REQUIREMENTS

The Ph.D. program requires a minimum of 63 credit hours of graduate level coursework. The required coursework is designed to provide students with a general overview of specific content areas, as well as with research methods and statistics in psychology. Examples of courses typically required include:

PSYX 501	Advanced Research Design & Analysis 2	3 credits
PSYX 502	Advanced Research Design & Analysis 1	3 credits
PSYX 539	Physiological Processes	3 credits
PSYX 541	Cognitive Processes	3 credits
PSYX 542	Learning	3 credits
PSYX 543	Memory	3 credits
PSYX 544	Social Psychology	3 credits
PSYX 546	Social Cognition	3 credits
PSYX 590	Master's Thesis	10-15 credits

### FINANCIAL ASSISTANCE

Teaching Assistantships or Research Assistantships, which are awarded on a competitive basis, are usually available to formally admitted graduate students during the first two years of study. See the Graduate Assistantships sections for detailed information on appointment criteria. Assistantships are requested by the student's home department.

### FACULTY

#### Department Head

Keith A. Hutchison, Ph.D.

#### Professors

A.M. Babcock; physiological psychology; cerebral ischemia, neurobiology of learning and memory.

K.A. Hutchison; cognitive psychology; attention, implicit and explicit memory, cognitive aging, psycholinguistics, cognitive neuropsychology.

J. L. Smith; social psychology; self-regulation of motivation, gender studies, interpersonal and achievement goals, stereotype threat.

#### Associate Professors

I. M. Handley; social psychology; social cognition; attitudes and persuasion, affect and decision-making.

M. L. Meade; cognitive psychology; memory, cognitive aging, collaborative memory, individual difference in performance.

M.C. Skewes; health psychology; minority health disparities, ethnic identity, addictive behaviors, substance abuse treatment.

#### Assistant Professors

B. Scott; developmental Psychology: anxiety and emotion - regulation in children, individual and contextual factors, and socio-cognitive and health outcomes.