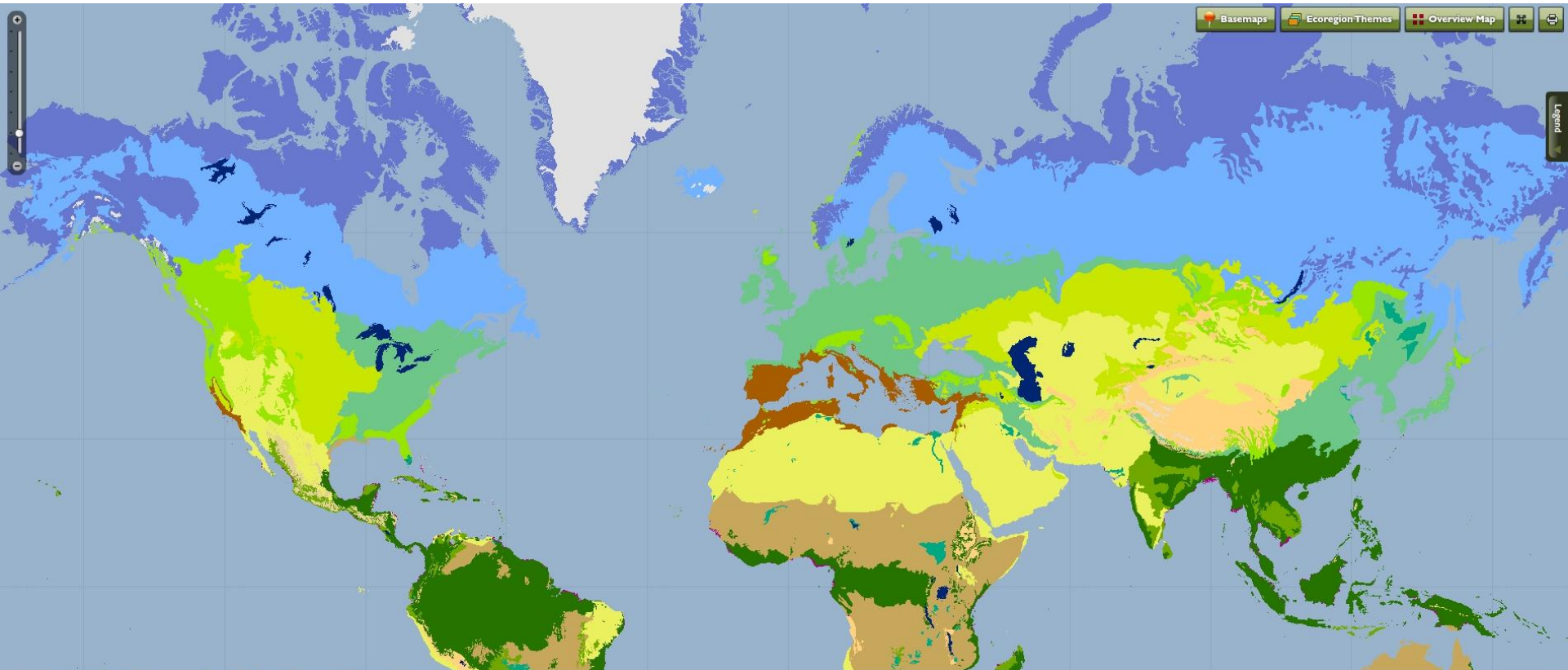



Boreal Forest



 Boreal Forests/Taiga

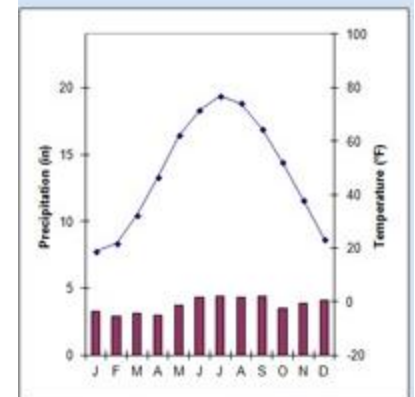
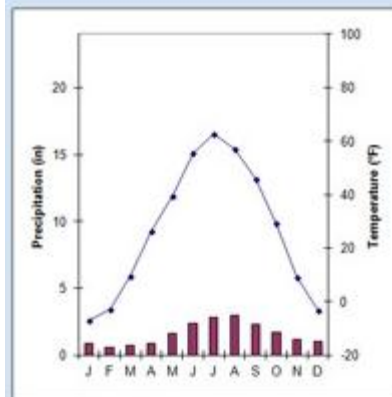
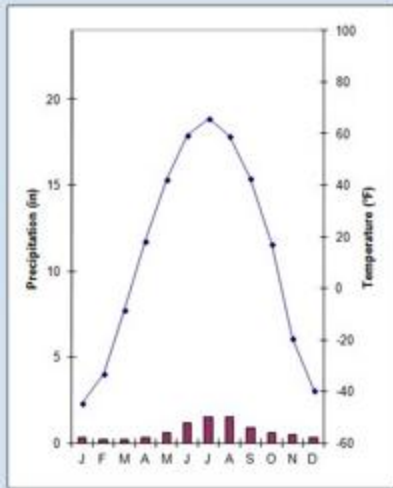
Climate



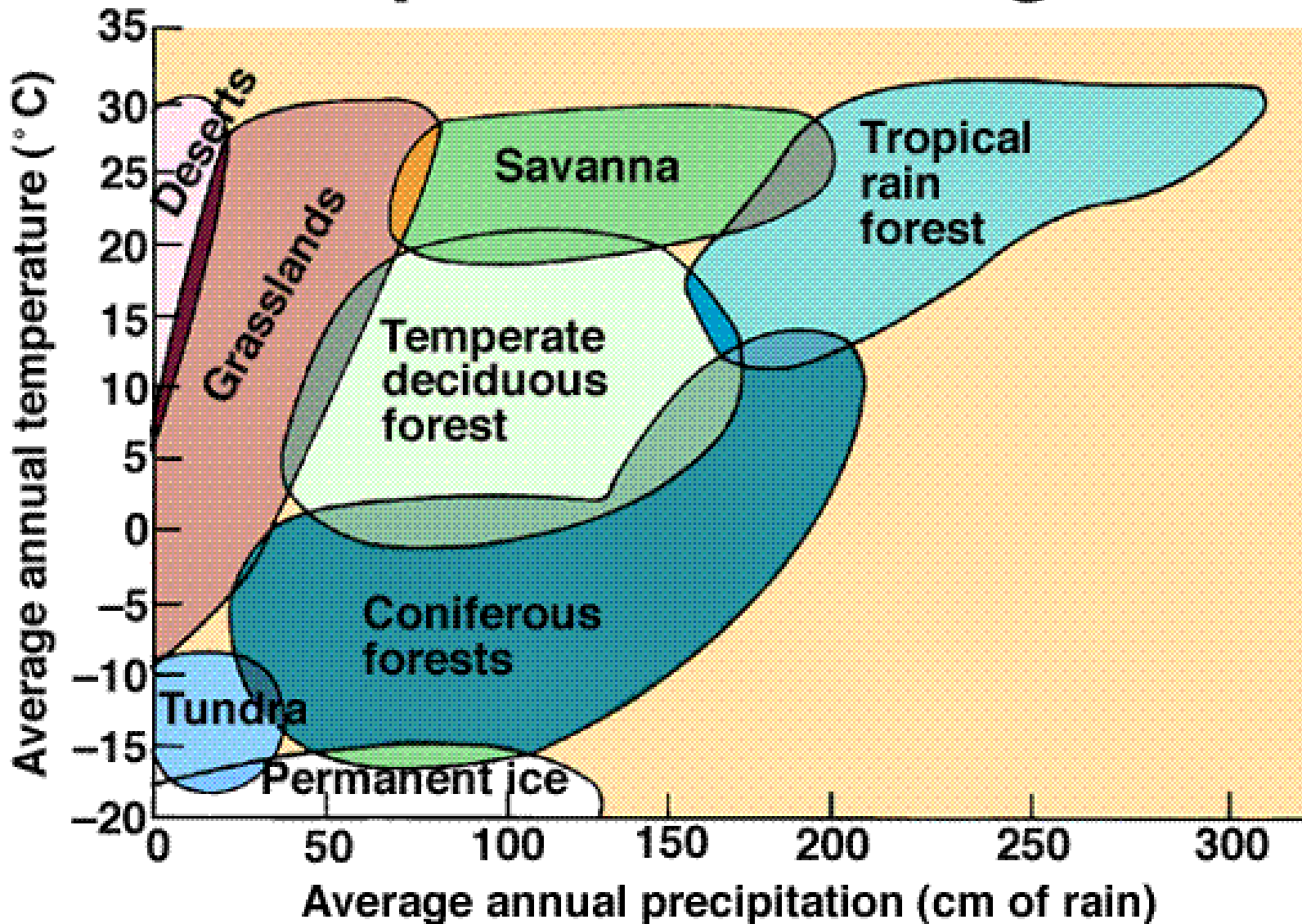
**Humid Continental
Climate, severe dry
winter: Yakutsk, Russia**

**Subarctic Climate:
Surgut, Russia**

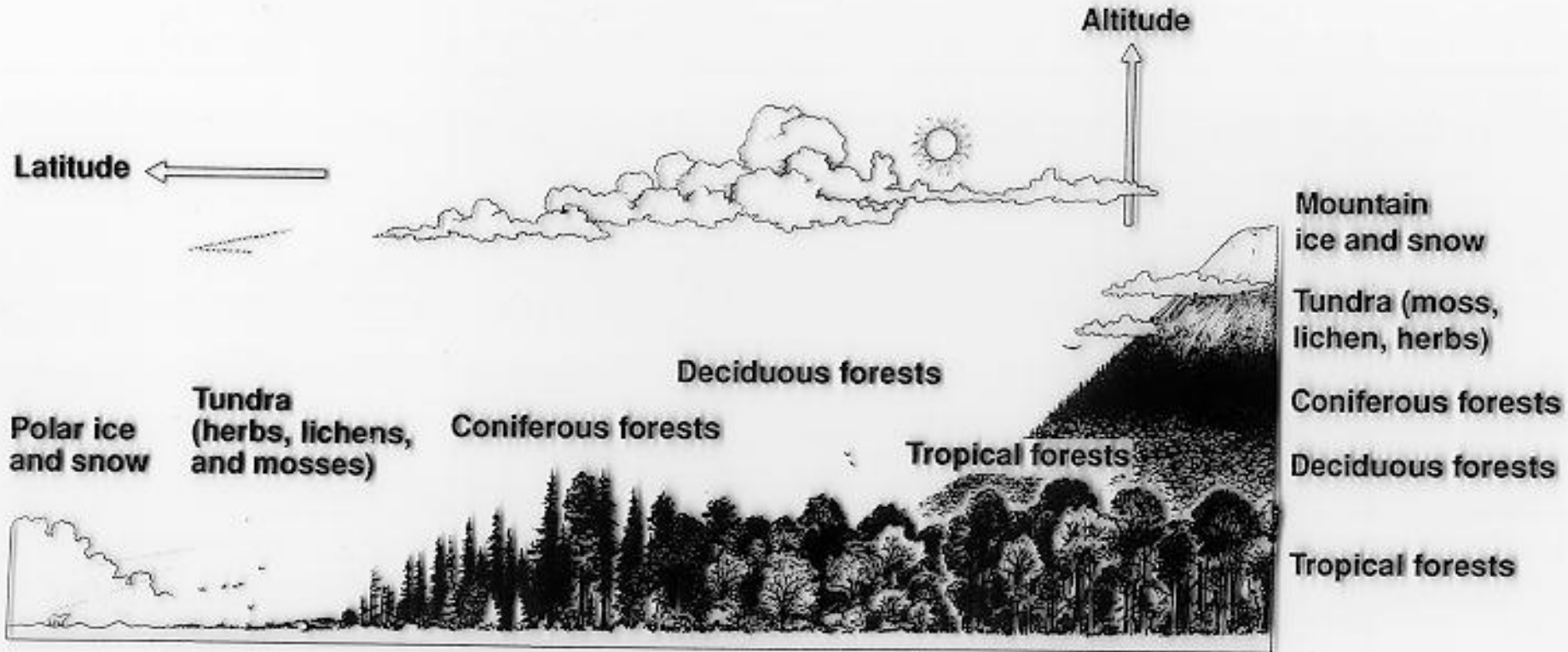
**Humid Continental
Climate, warm summer:
Quebec City, Canada**



Influence of Precipitation and Temperature on Vegetation



Topography



Humboldt's Rule (1807):

Moving up 1000m in elevation experiences about the same changes in vegetation communities as traveling 500km north in latitude.

Soils

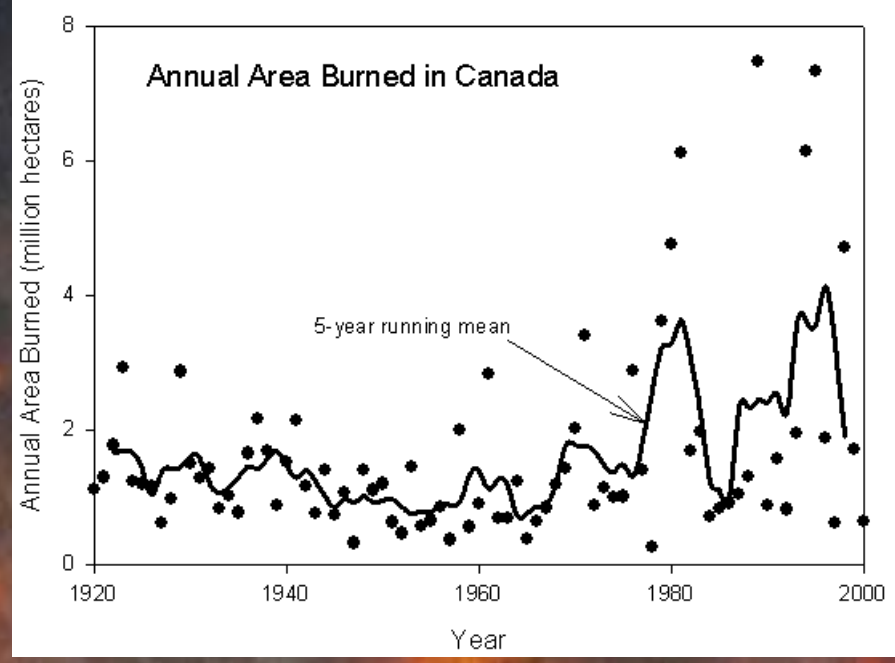


Vegetation Composition

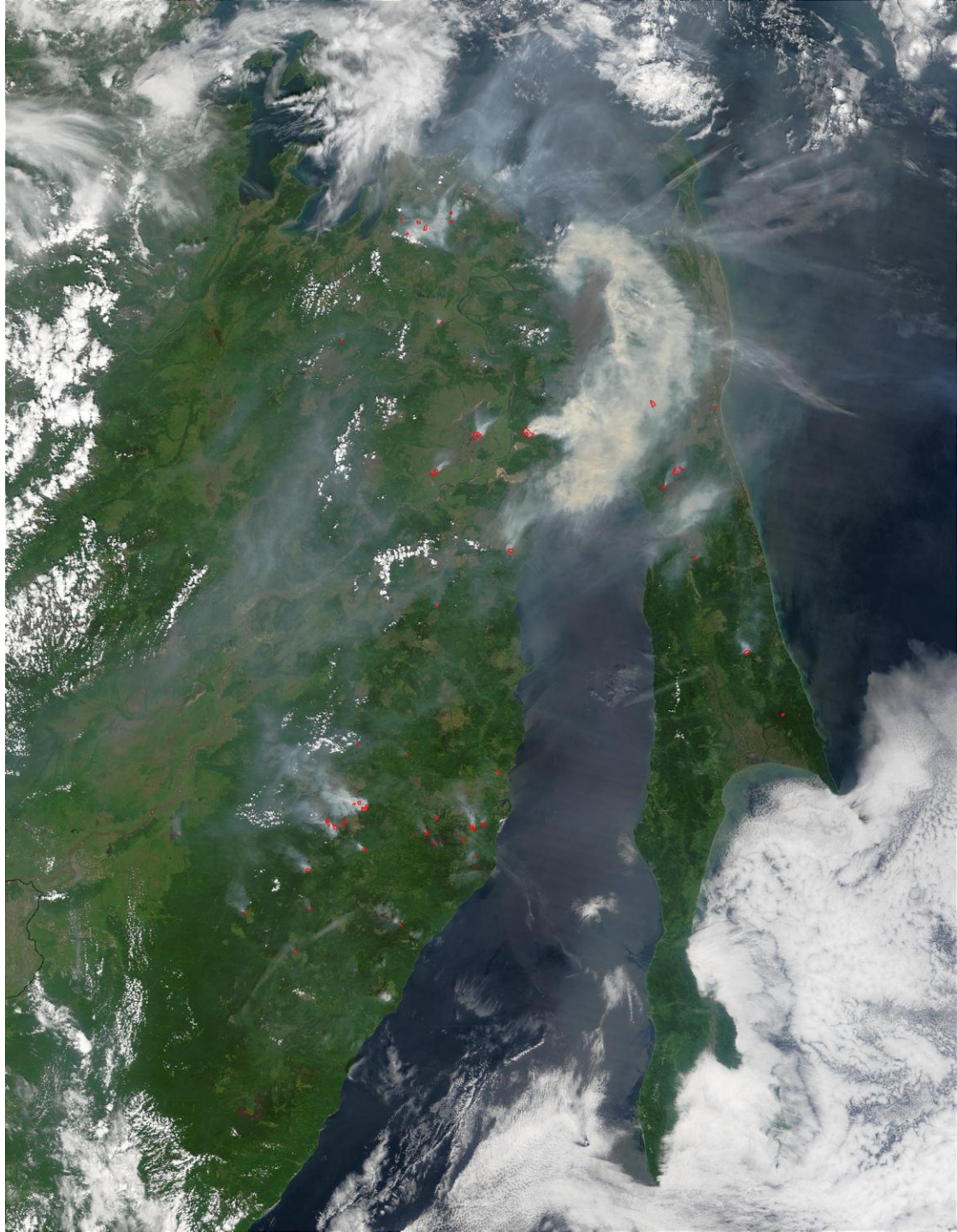


Vegetation Structure





MODIS imagery from 2003 fires in Siberia



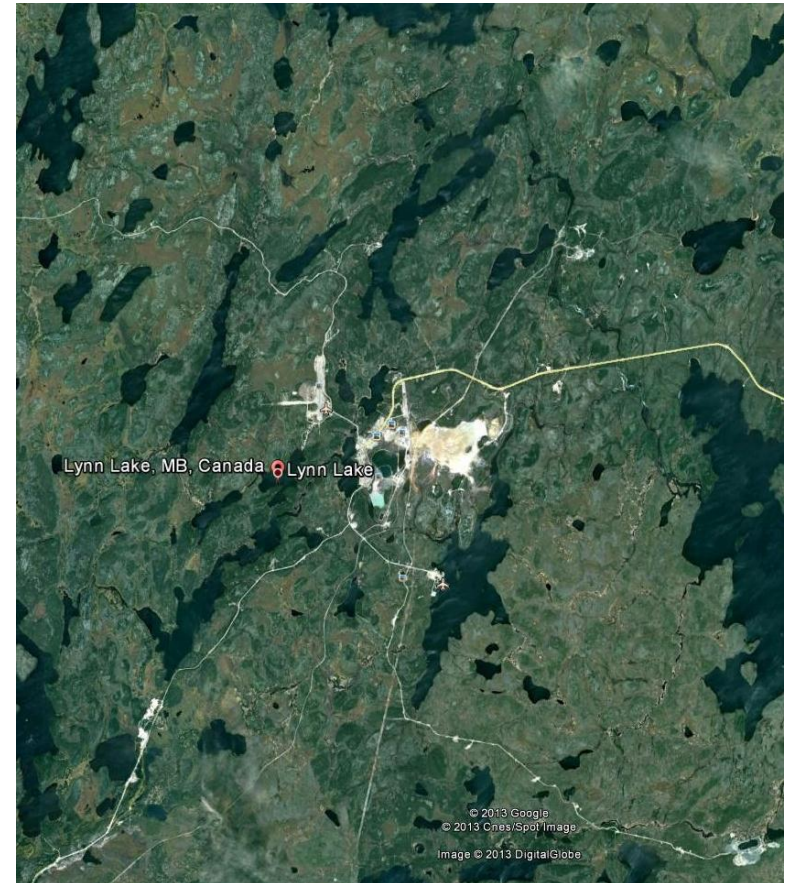
Species Diversity



Human Use



Human Use – Resource Extraction



Additional Reading



Alaska's Changing Boreal Forest

EDITED BY

F. Stuart Chapin, III
Mark W. Oswood
Keith Van Cleave
Leslie A. Viereck
David L. Verbyla

