

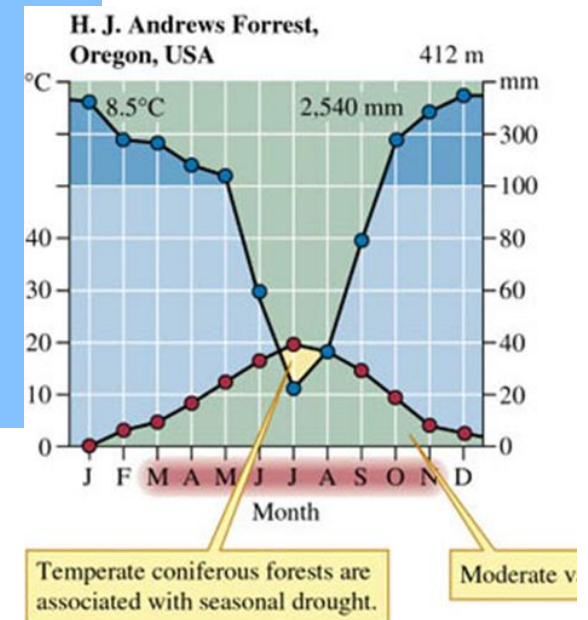
Virtual Field Trip: Temperate Rain Forest



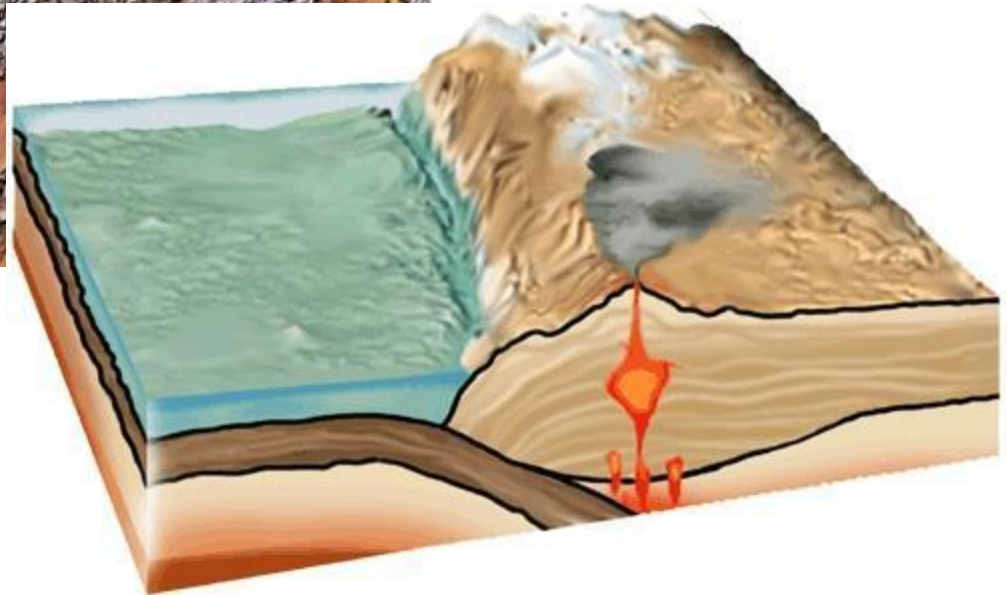
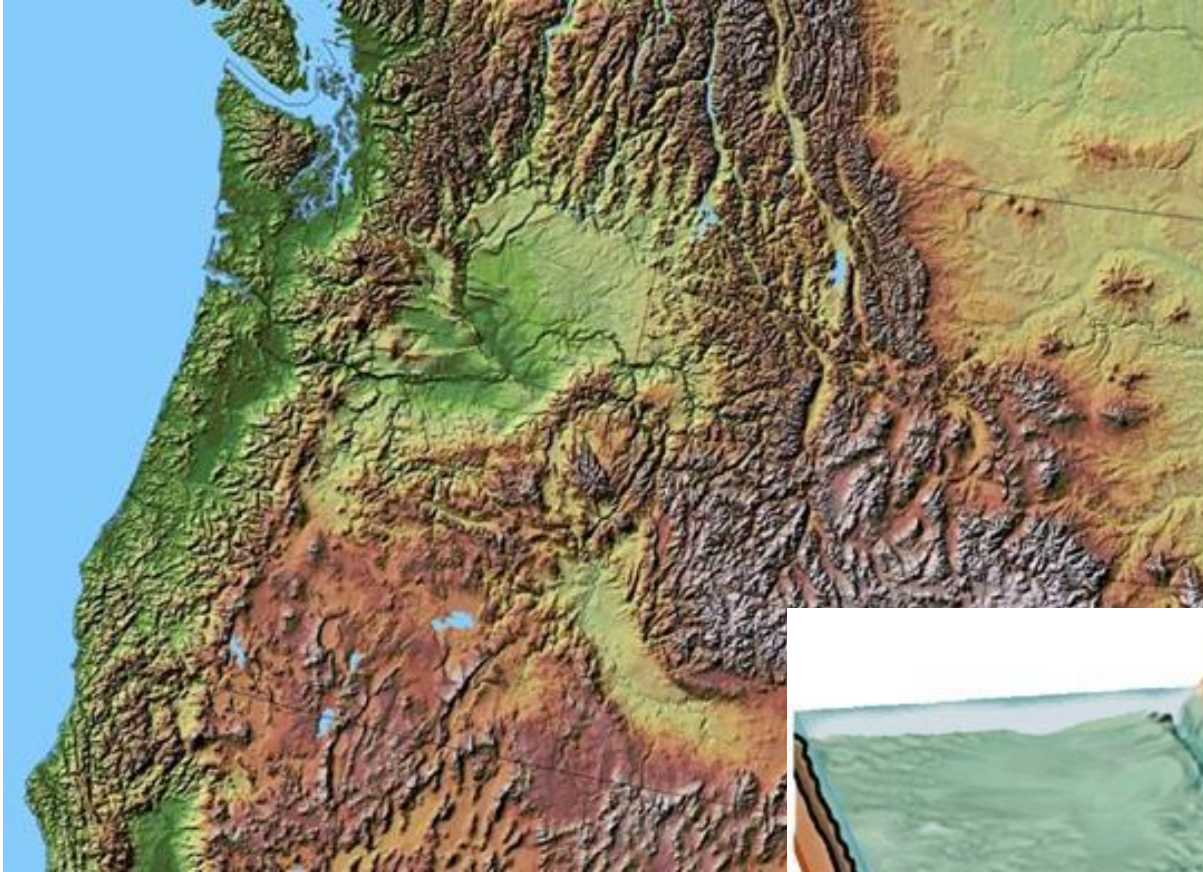
**Knysna Forest Biome near
Nature's Valley, in the
Tsitsikamma, South Africa**



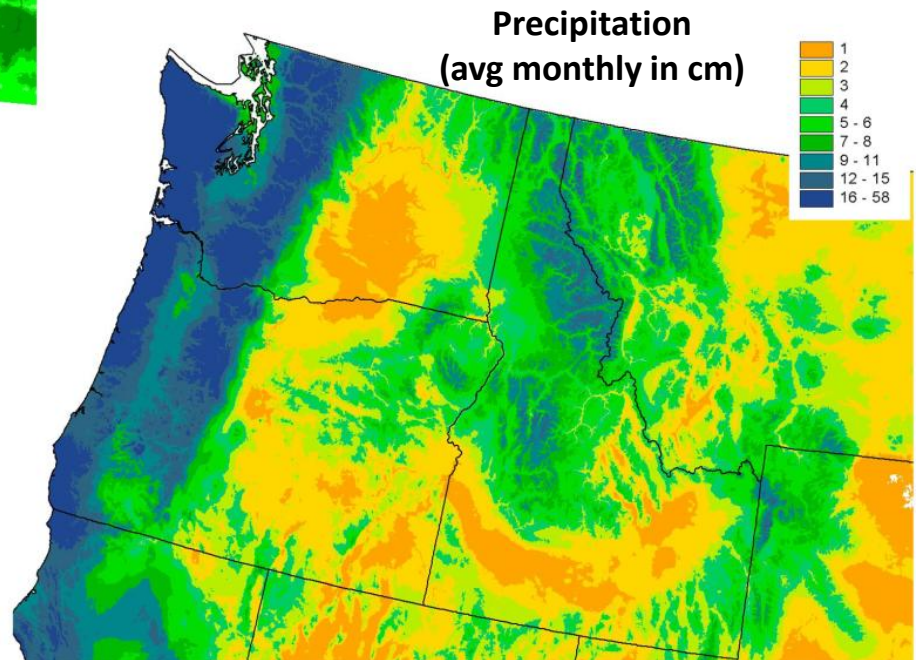
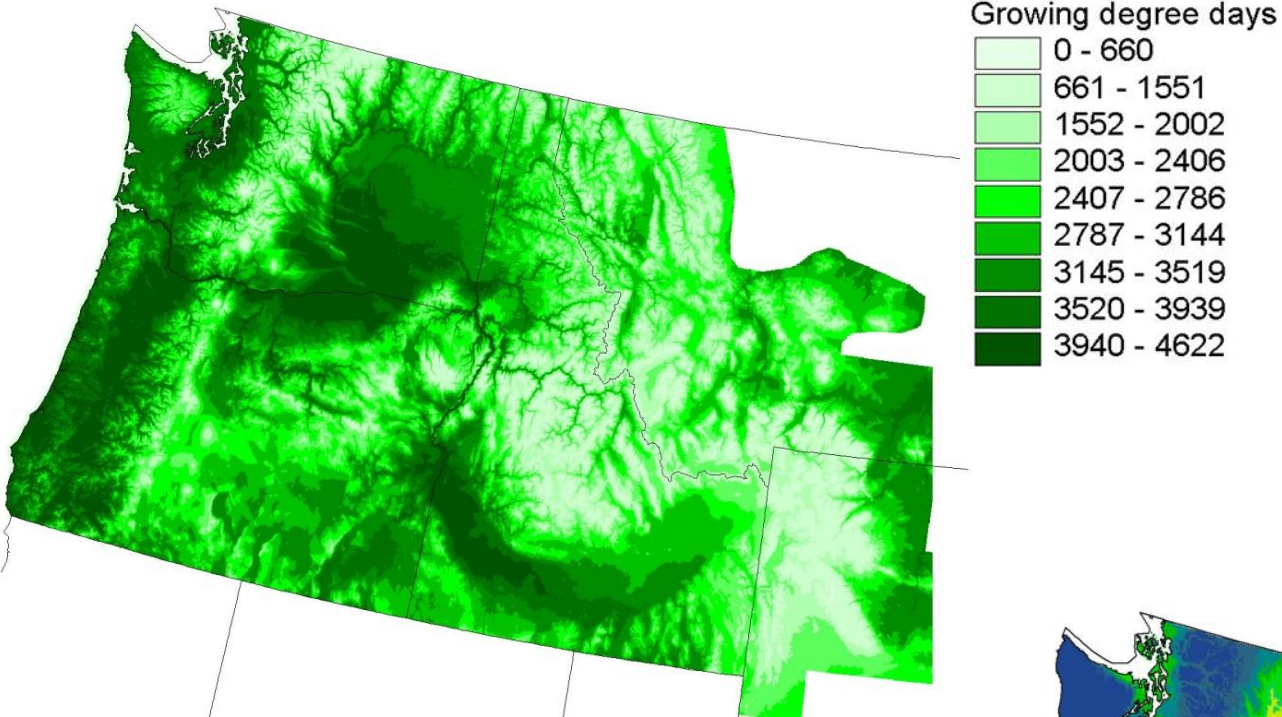
Virtual Field Trip: PNW US Temperate Rain Forest



Topography and Soils



Climate



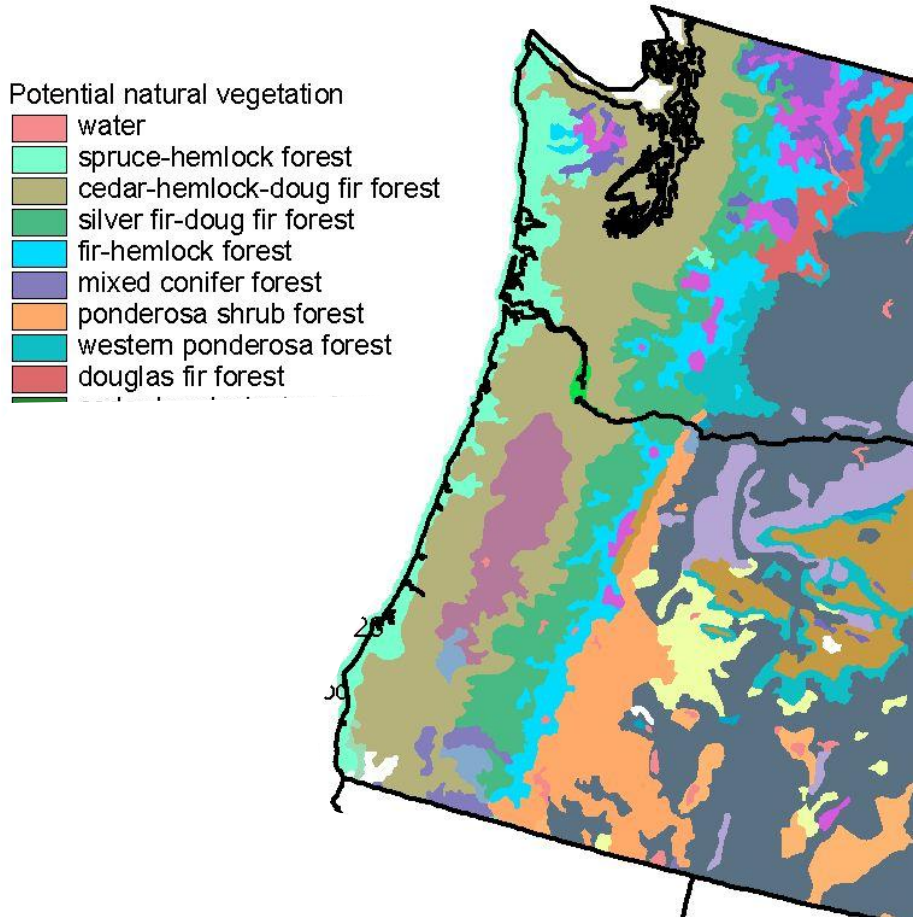
Vegetation Composition

Douglas Fir and Western
Hemlock forest, Roslyn, Wa.

Needle-leaved evergreen



Vegetation Composition



Kuchler's Potential Natural Vegetation



Spruce-Hemlock forest and Umpqua River Lighthouse. Oregon, USA

Vegetation Structure



Douglas Fir forest, Springfield, OR.



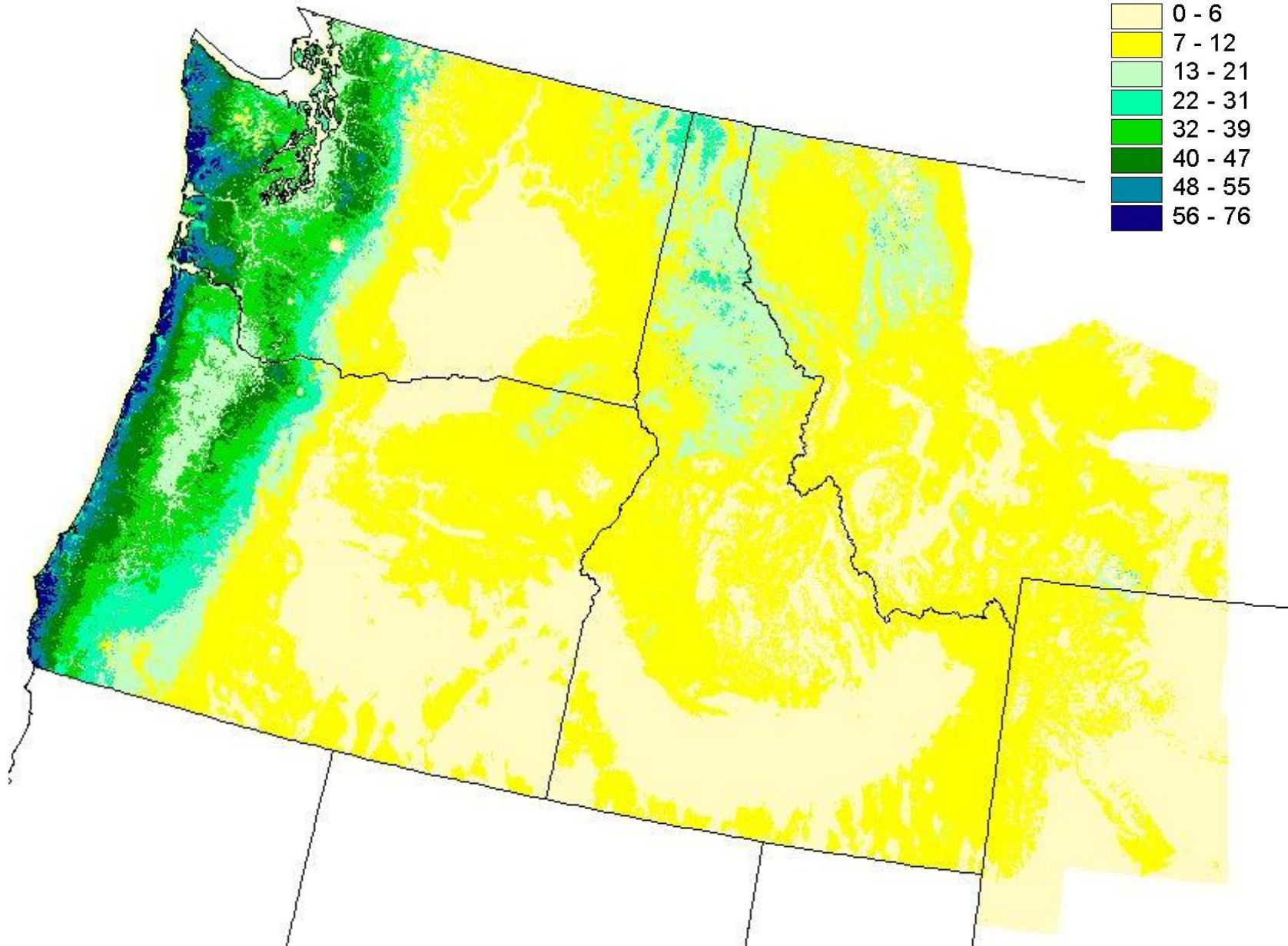
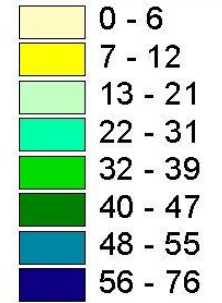
Epiphytes



Vegetation Productivity

(MgC ha⁻¹ yr⁻¹)

3PG GPP total

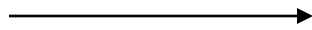


Natural Disturbance



Natural Disturbance

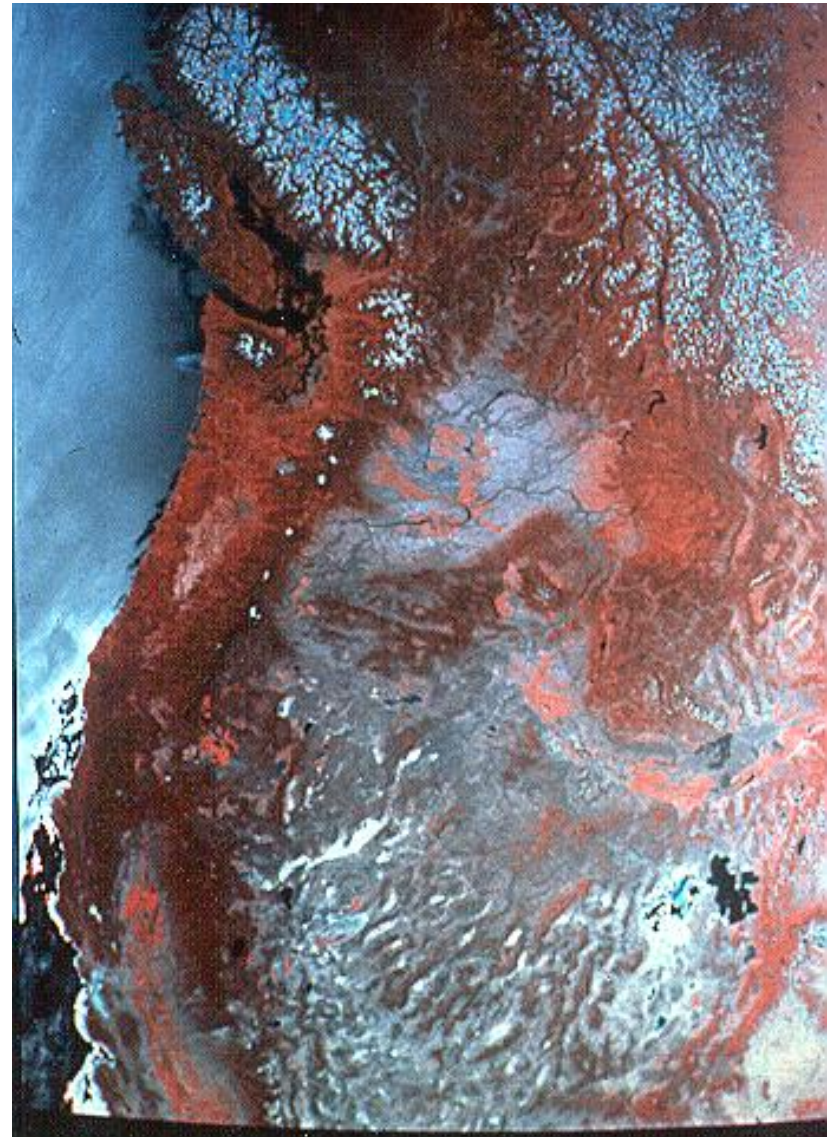
Frequency: none



Frequency: 250-500 yrs
Severity: high
Size: large



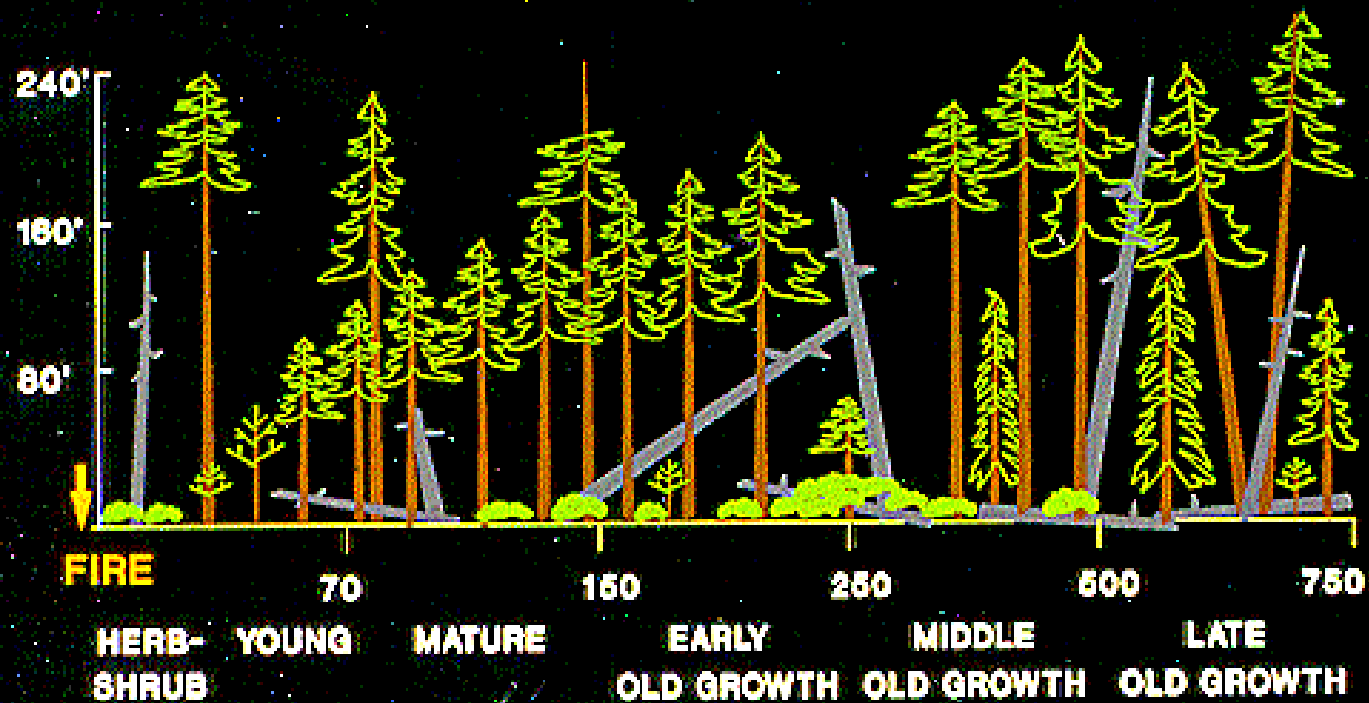
Frequency: 50-90 yrs
Severity: low
Size: small



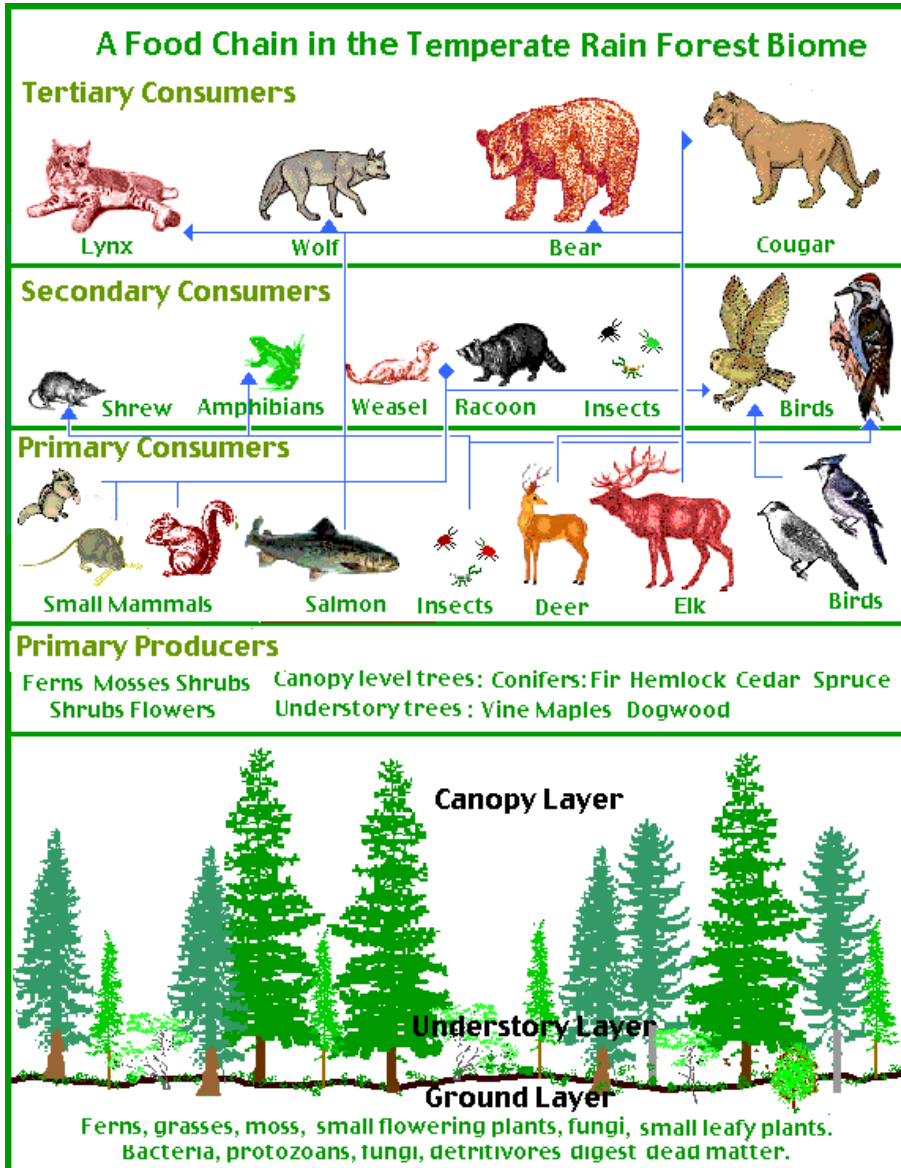
Fire in the PNW

Vegetation Succession

Forest Development Following Moderate Severity Wildfire



Species and Trophic relationships



Pacific Yew



Western Redcedar

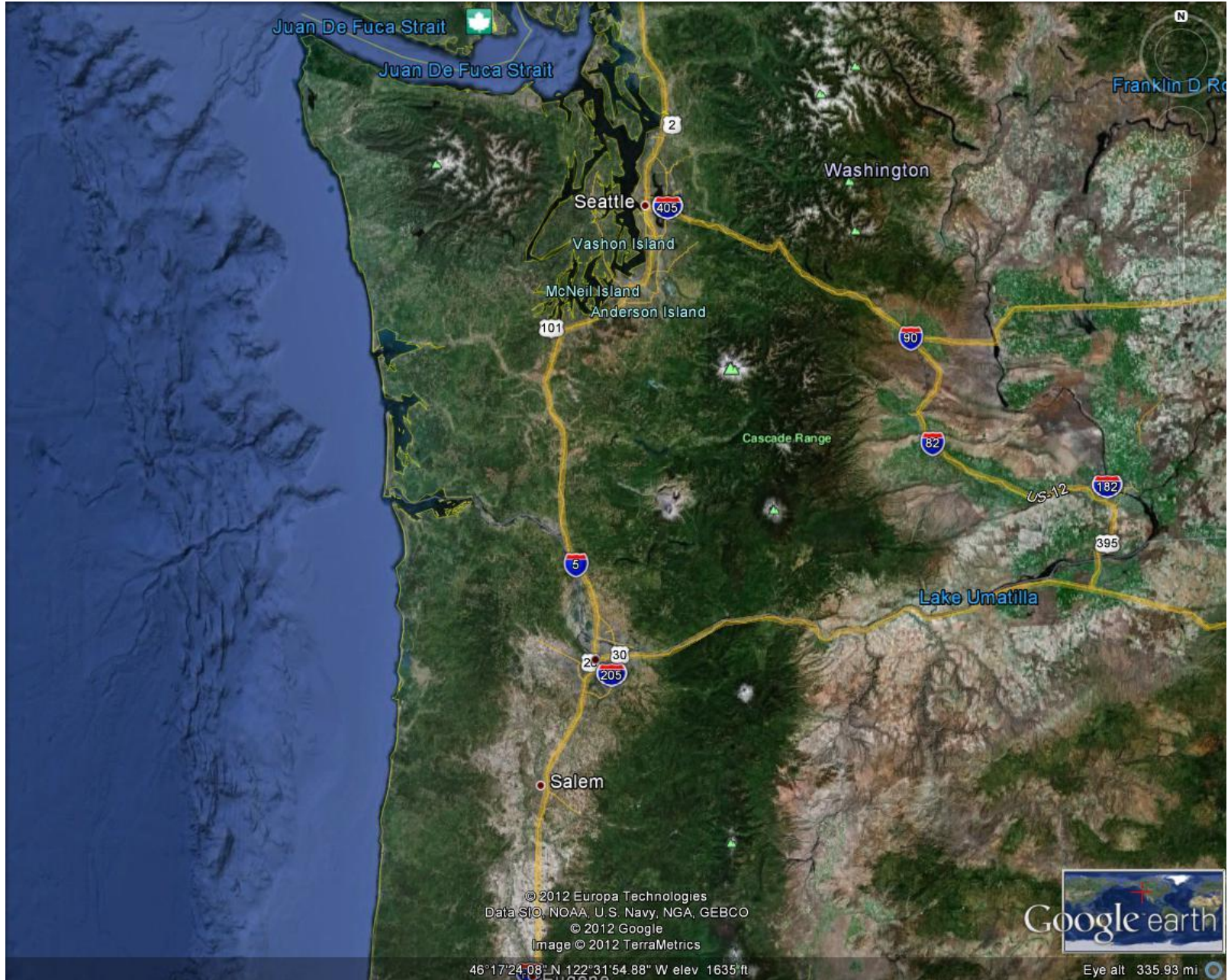


Pacific Giant Salamander



Northern Spotted Owl

Land Use



Marine/Terrestrial Interactions and Land Use



Land Use



Ecological Forestry



Loren Hicks,
Plum Creek

Jerry Franklin, Univ Washington