



Intel AMT Developer Tool Kit

Part of the Intel manageability community

Ylian Saint-Hilaire

Senior Software Engineer / Architect

June 2007

Introduction

- **The Intel AMT Developer Tool Kit**

- Work started in November 2006
- First version publicly available January 2007
- Includes 5 major tools, 2 minor ones.

- | | |
|-----------------------|-----------------------------|
| - Intel AMT Commander | Console Tool |
| - Intel AMT Outpost | Agent Tool |
| - Intel AMT Director | Setup & Configuration Tool |
| - Intel AMT Monitor | Monitoring Tool |
| - Intel AMT Switchbox | Embedded Monitoring & Proxy |
| - Intel Net Traffic | Traffic Generation Tool |
| - Intel Net Status | Network Check Tool |

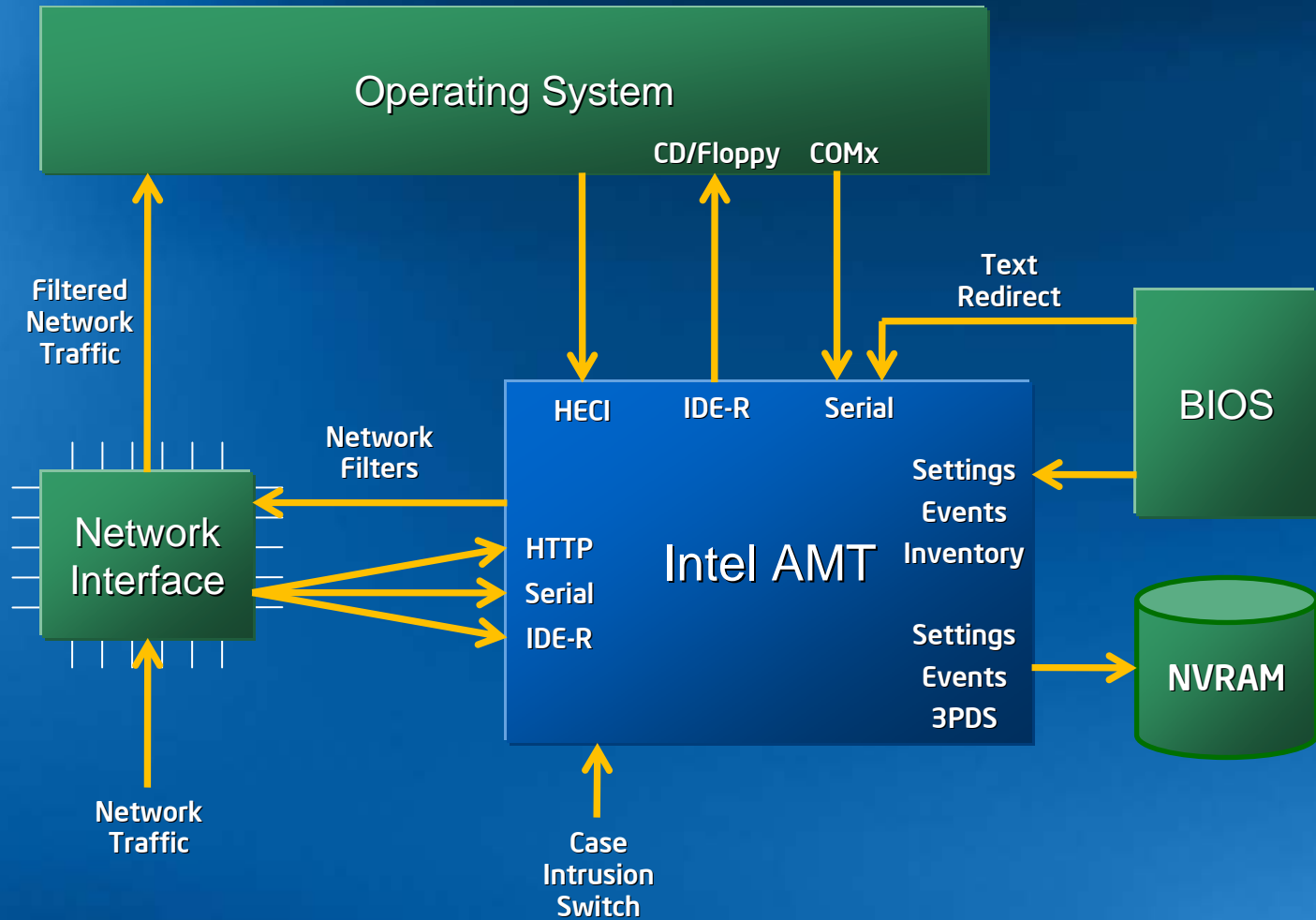


Goals & Objectives

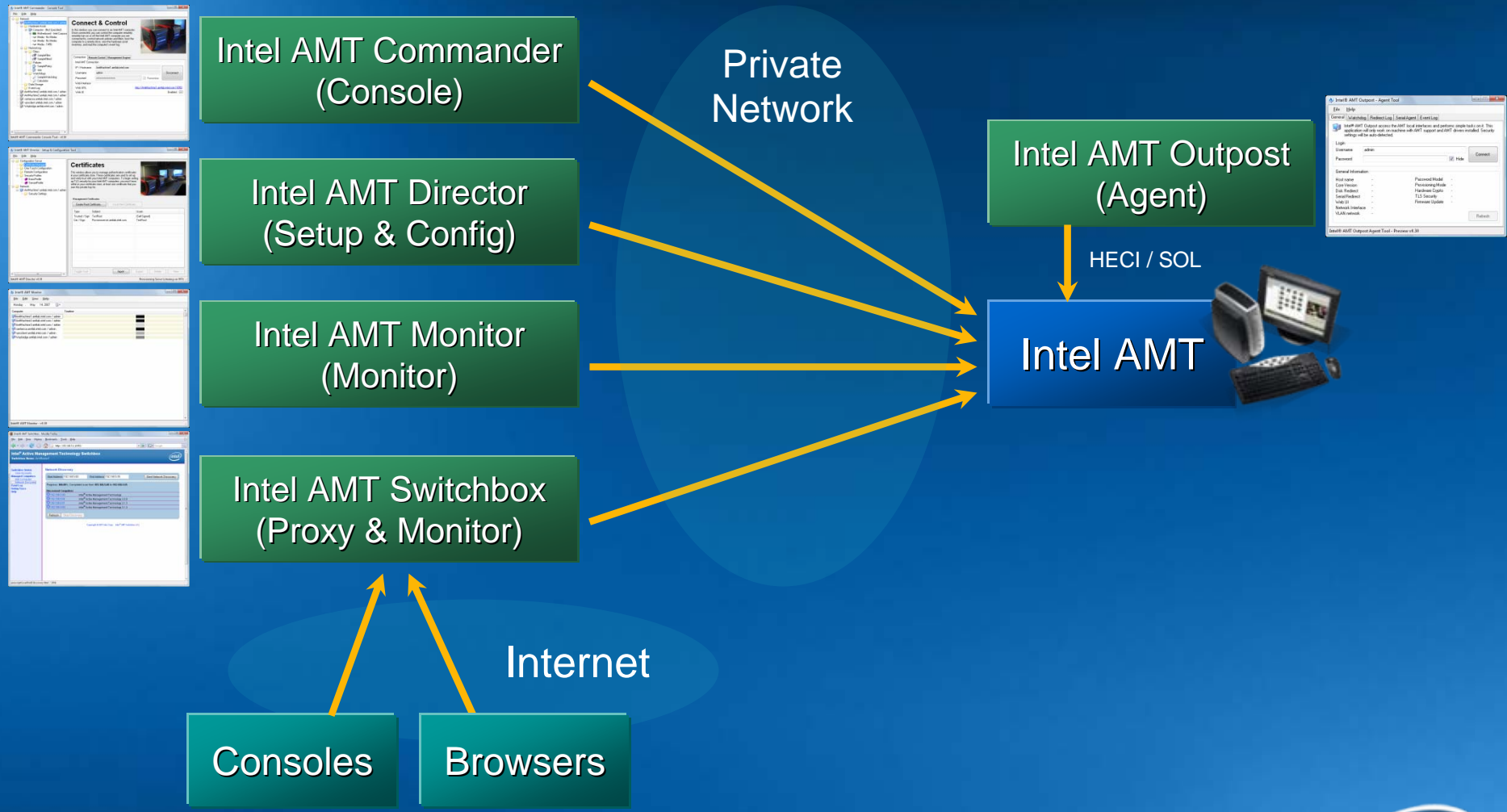
- **Educate** people on Intel AMT value and usages.
- **Reference** tools for developers & testers.
- **Research** platform for trying new ideas.
- **Accelerate** development of Intel AMT software.
- **Early** adoption software for new features.



Simplified - Intel AMT in & out's



Intel AMT DTK Overview



Intel AMT DTK - Milestones

Oct 2006	Nov 2006	Dec 2006	Jan 2007	Feb 2007	Mar 2007	Apr 2007	May 2007	Jun 2007
v0.01 – v0.02	v0.03 – v0.08	v0.09 – v0.12	v0.13 – v0.20	v0.21 – v0.23	v0.24 – v0.26	v0.27 – v0.29	v0.30 – v0.31	v0.32 –
Work starts on Intel AMT Commander & Outpost. First internal release of Commander followed by Outpost 2 weeks later.	First release of TCP-over-SOL. First training videos. Remote process control using SOL. First file upload & download over SOL.	Commander now support batching operations. Commander support PET events.	First public release of the DTK on Intel.com. First internal release of Intel AMT Switchbox. IAmtTerminal is now split from Commander. First Intel AMT Drag & Drop component available.	Santa Rosa AMT 2.5 support announced. Commander and Director support TLS. First version of Intel AMT Director available.	Heuristic filter support added to Commander. Second version of AMT Switchbox released. Intel DTK now internationalized to Simplified Chinese. Commander & Outpost support remote device management using SOL.	Tom's hardware article on Intel AMT makes use of the DTK. Intel AMT Director performs first remote configuration (ZTC) setup. 3rd version of Intel AMT Switchbox released. Intel AMT Terminal can now run as Telnet replacement. User account management now supported in Director.	DTK now internationalized in Japanese. IDE-R support added to Intel AMT Switchbox. Work started on Intel AMT Monitor. Intel AMT DTK source code available to the public.	First release of Intel AMT Monitor. AMT Terminal now supports scripting.

Intel AMT Commander

Intel AMT Outpost

Intel AMT Switchbox

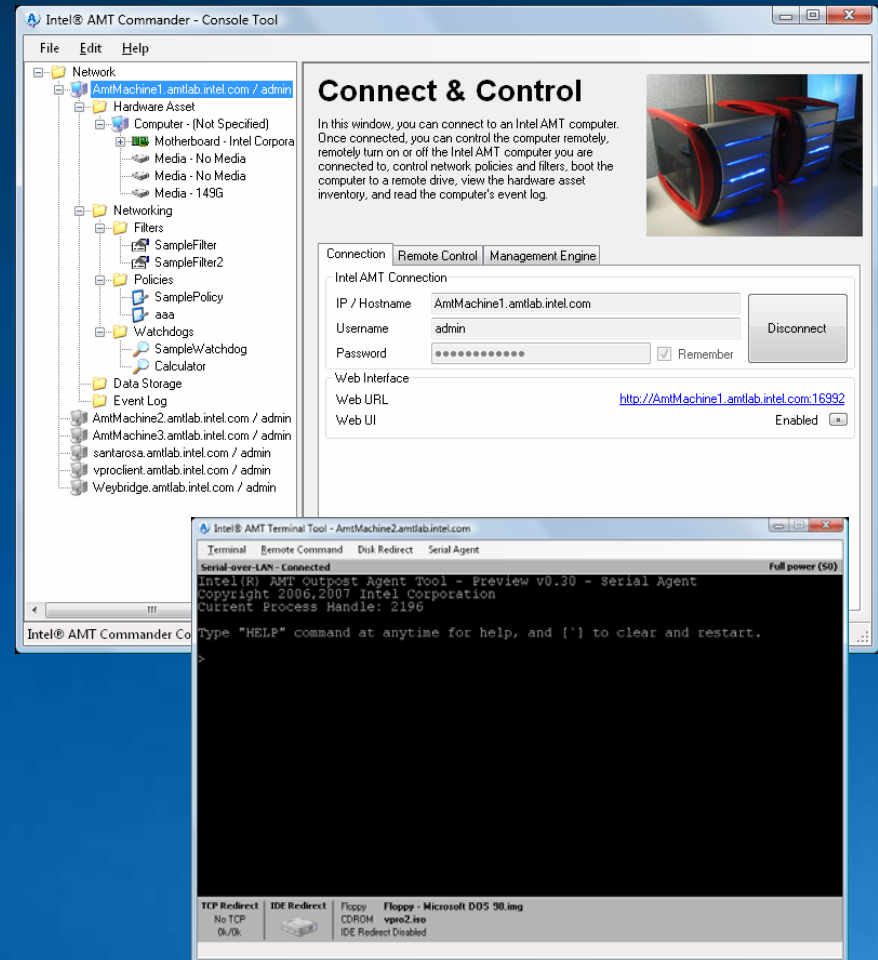
Intel AMT Director

Intel AMT Monitor



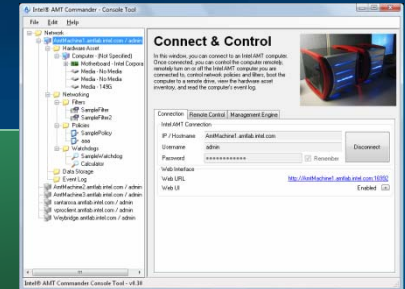
Intel AMT Commander

- Intel AMT console tool
 - Hardware Asset
 - Network Policies, Filters
 - Watchdogs
 - 3rd Party Storage
 - Event & Alerts
 - SOL/IDE-R
 - TLS Security
 - ME Management
 - SOL Scripting



Intel AMT Commander - Architecture

Stand Alone Applications



Intel AMT Commander

Intel AMT Terminal

Intel AMT Remote Stack

Redirection Wrapper

Serial High Stack
Serial Low Stack

Storage Wrapper

Intel AMT Stack

Intel AMT Discovery

Certificate Manager

AMT SOL/IDE-R Redirection Lib

AMT 3PDS Library

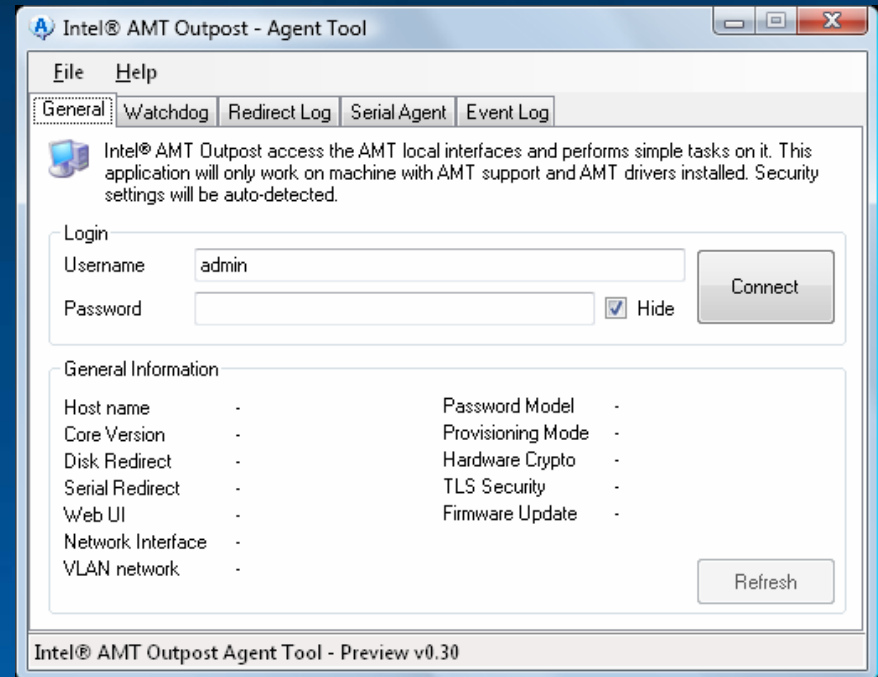
WSDL Files

Provided by the Intel AMT SDK



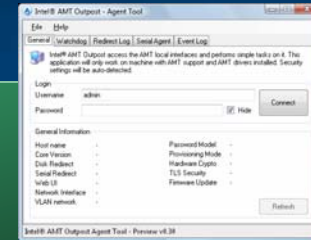
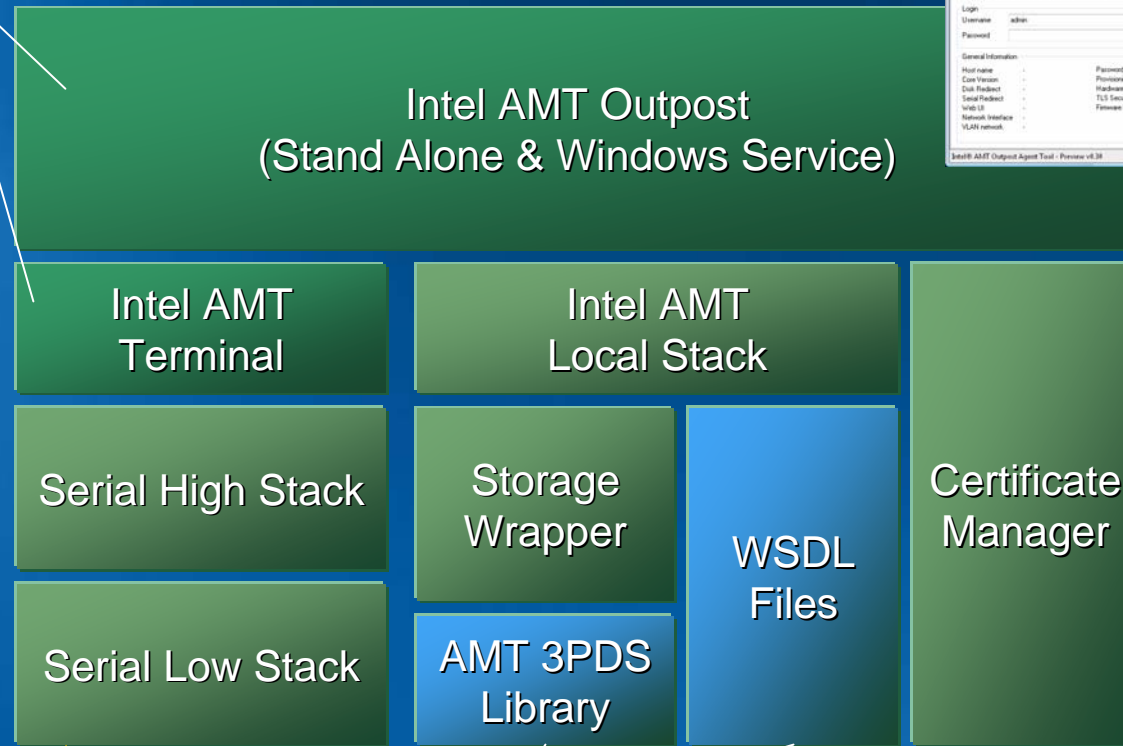
Intel AMT Outpost

- Intel AMT agent tool
 - General Info
 - Watchdogs
 - Serial Agent
 - TLS Security



Intel AMT Outpost - Architecture

Stand Alone Applications



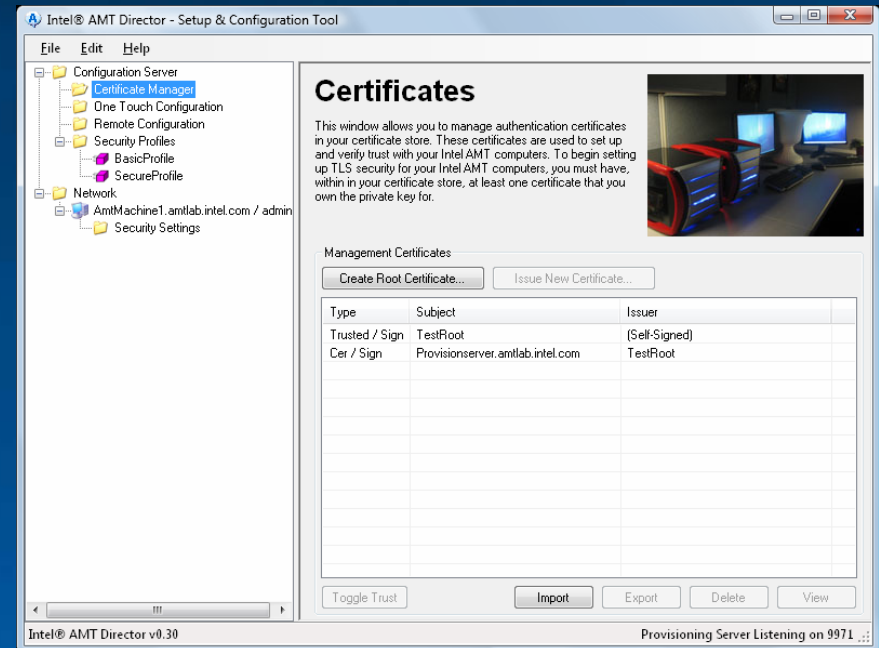
Standard COM port

Provided by the Intel AMT SDK

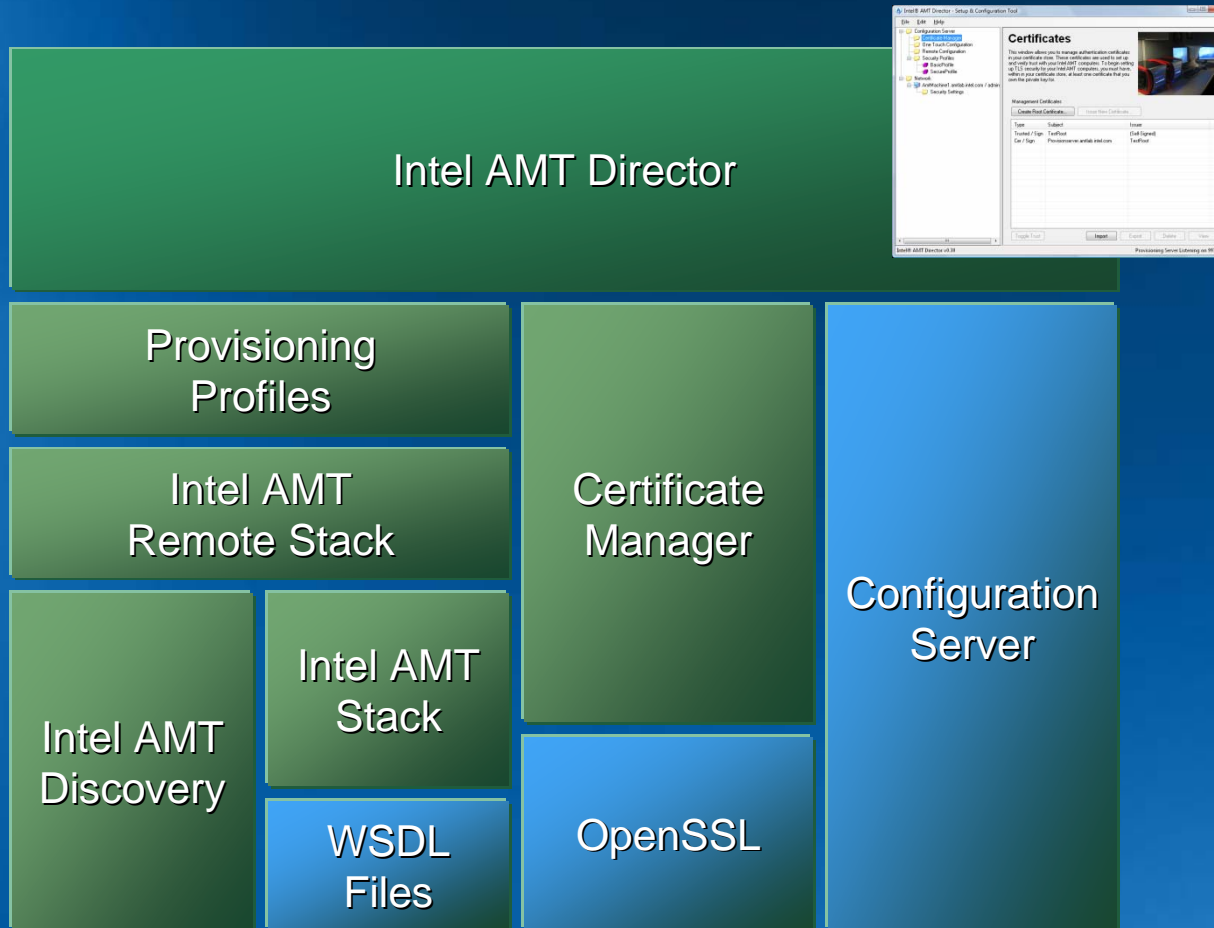


Intel AMT Director

- Intel AMT setup tool
 - Certificate Management
 - One-Touch Setup
 - Remote Configuration
 - TLS Security Setup
 - USB Flash Support



Intel AMT Director - Architecture

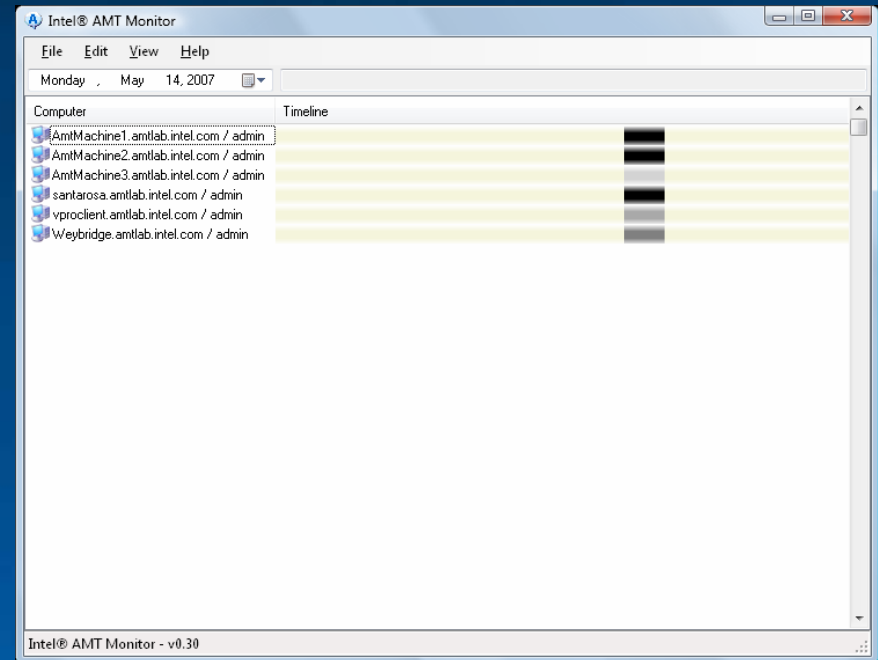


Provided by the Intel AMT SDK

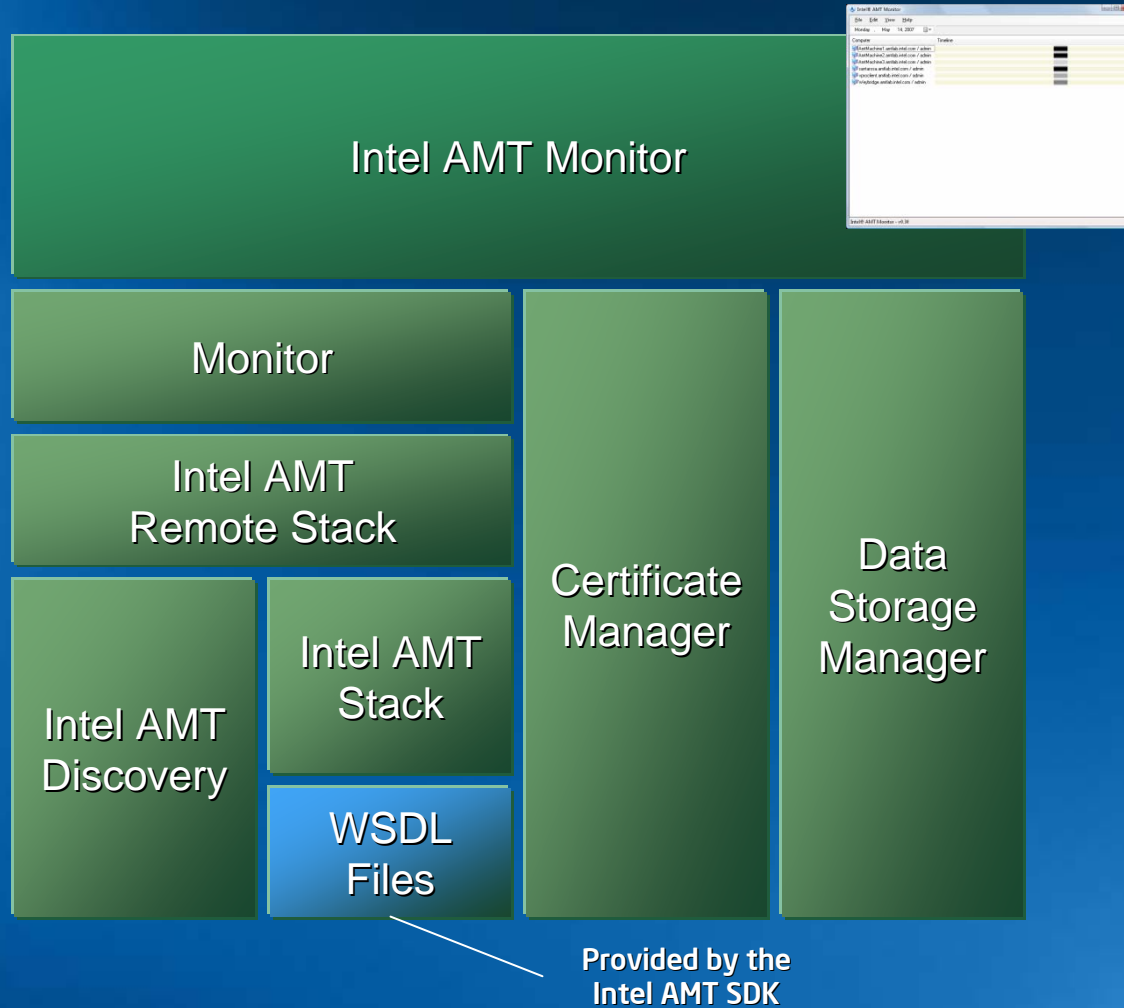


Intel AMT Monitor

- Intel AMT monitoring tool
 - Power Monitoring
 - Connectivity Monitoring
- Future Possibilities
 - Watchdog Monitoring
 - Asset Monitoring
 - TLS Security Setup

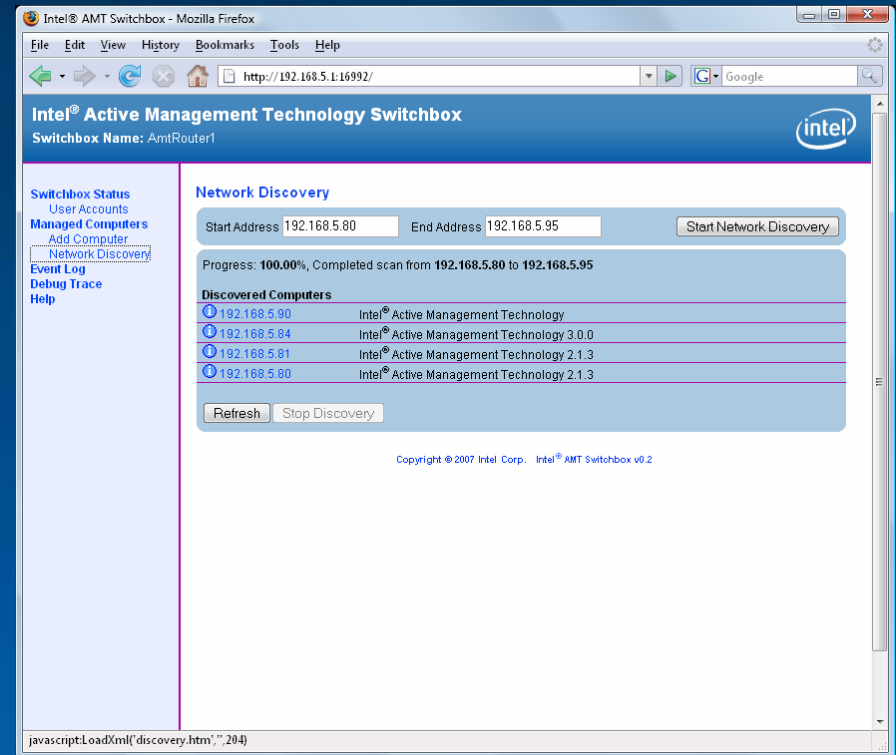


Intel AMT Monitor - Architecture

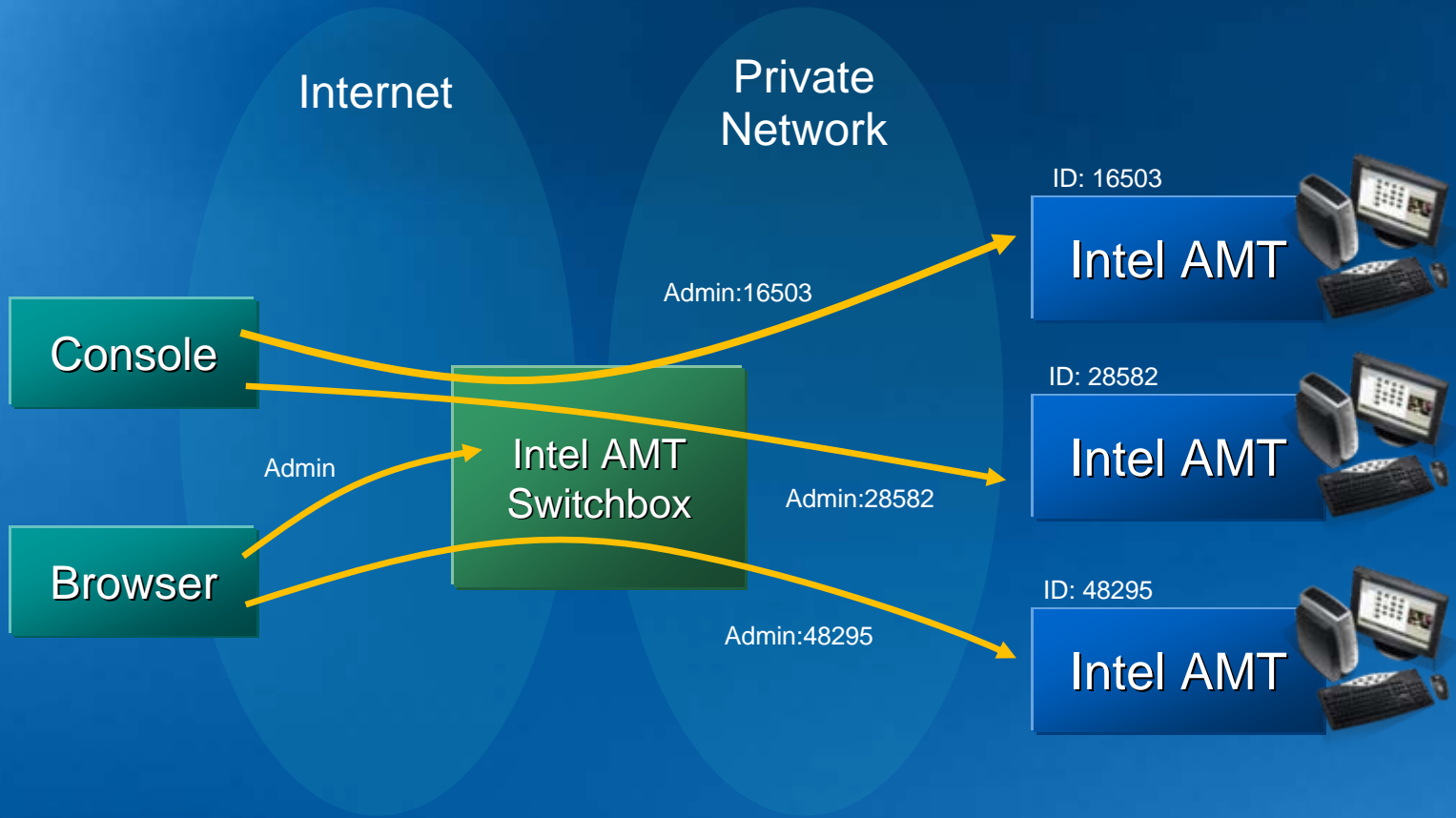


Intel AMT Switchbox

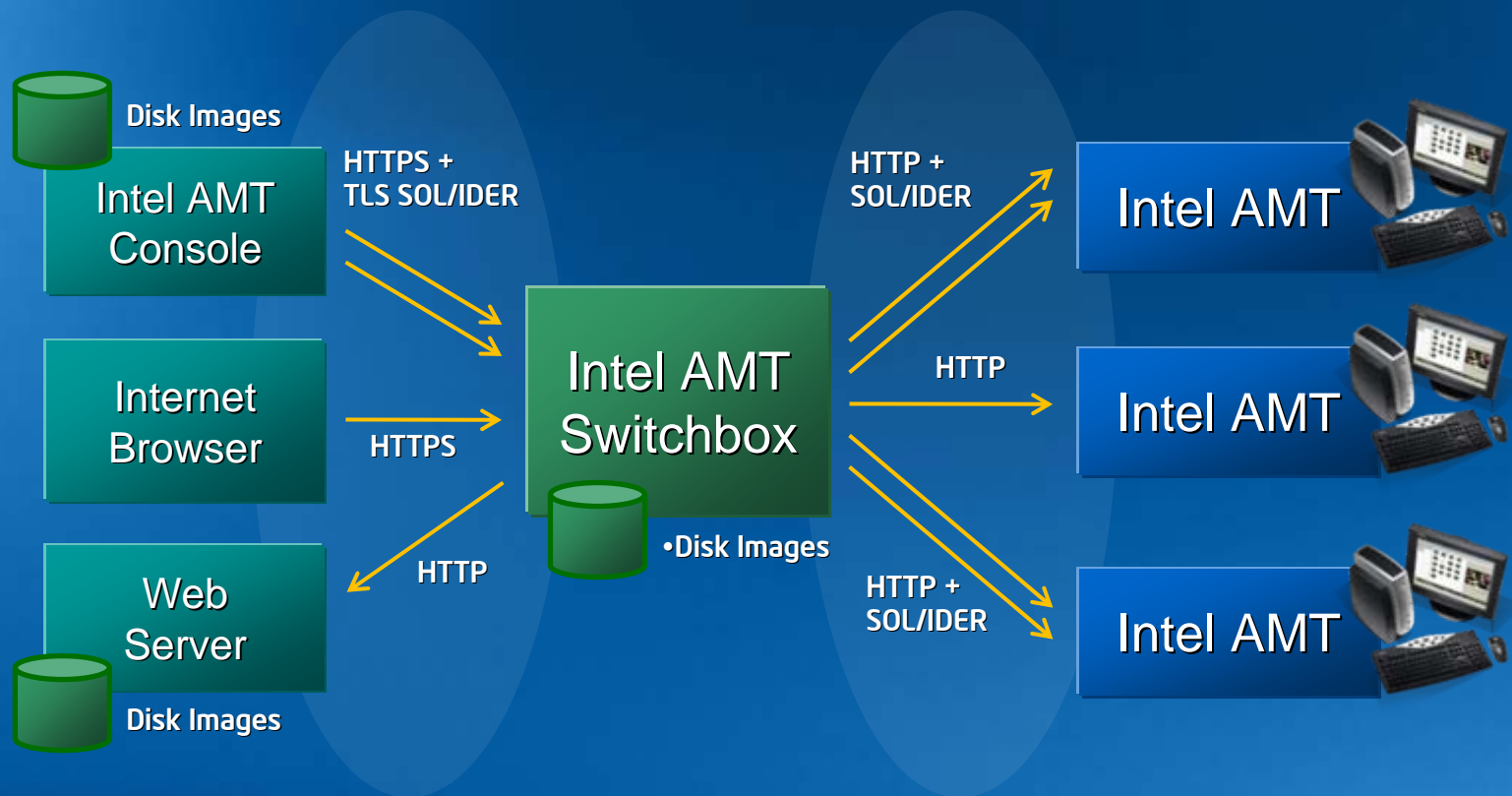
- Proxy & Monitoring tool
 - ~200k Embedded C
 - Web Services Proxy
 - IDE-R/SOL Proxy
 - Standalone IDE-R
 - Telnet-to-SOL Bridge
 - Network Discovery



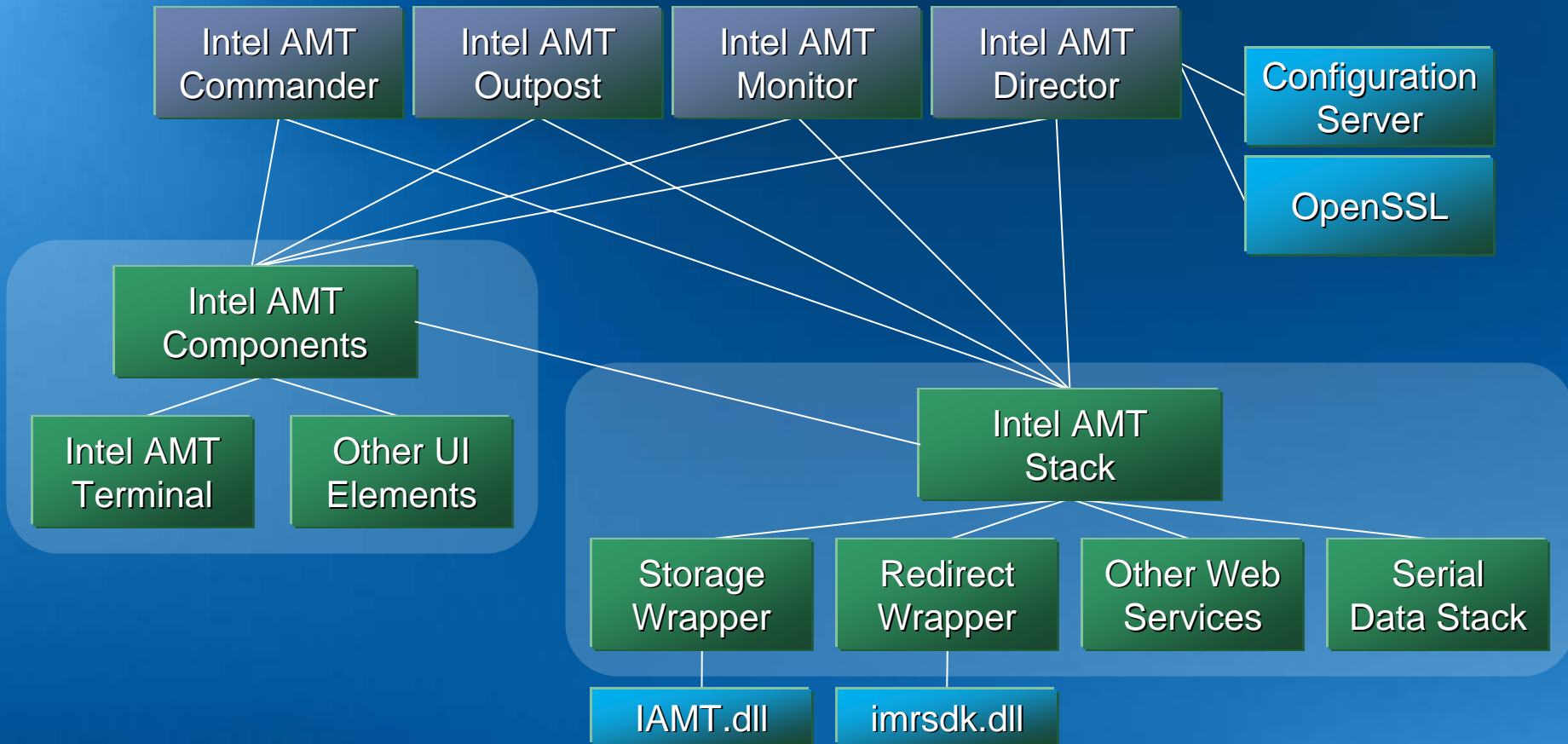
Intel AMT Switchbox - Solving NAT



Intel AMT Switchbox - Security / IDE-R



Intel AMT DTK Internal Modules



References

- **Owners:**
 - Ylian Saint-Hilaire - Intel AMT DTK
 - Sandeep Siroya - Intel AMT Switchbox
- **Community Site:**
 - www.intel.com/software/manageability
- **Intel AMT DTK Blog:**
 - www.intel.com/software/ylian
- **Download Site:**
 - www.intel.com/software/amt-dtk

