

DEPARTMENT OF CELL BIOLOGY AND NEUROSCIENCE

The goal of the Department of Cell Biology and Neuroscience at Montana State University is to prepare students for careers in academic research, government and the biotechnology industry in areas such as cognitive neuroscience, cell biology, neurophysiology, neuroinformatics, developmental biology, biophysics and computational neuroscience.

DEGREES OFFERED

M.S. IN NEUROSCIENCE
PH.D. IN NEUROSCIENCE
M.S. IN BIOLOGICAL SCIENCES
PH.D. IN BIOLOGICAL SCIENCES

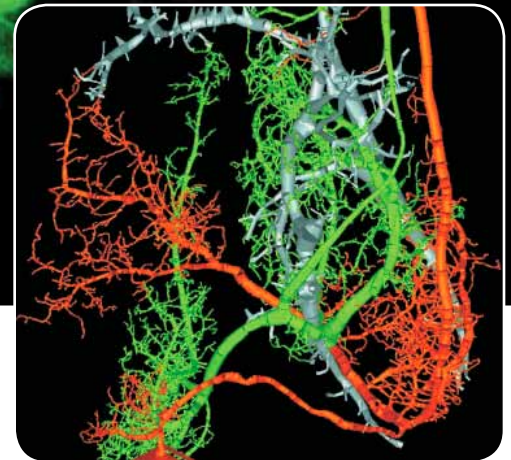
PROGRAM DESCRIPTION

The mission of the Department of Cell Biology and Neuroscience (CBN) is to provide a foundation of biological knowledge in preparation for pursuit of careers in medicine and medically-related fields, biotechnology, biological research, biology teaching and other related professions. The goal of the Ph.D. program is to train a new generation of biological scientists equipped to exploit advanced experimental and computational

approaches to develop comprehensive understandings of complex biological systems, and to develop, through research, new knowledge in several key areas of cell biology and neuroscience.

RESEARCH AREAS OF EMPHASIS

The academic programs and scientific research interests in the Department of Cell Biology and Neuroscience cover a wide range of topics, with special emphasis on cell biology, neurobiology, developmental biology, physiology, anatomy, biophysics and neuroinformatics. Together, faculty and students in the department study biological processes which span the continuum from single cells to the entire organism.



DEPARTMENT OF CELL BIOLOGY
AND NEUROSCIENCE
MONTANA STATE UNIVERSITY

Department Address:

513 Leon Johnson Hall
P.O. Box 173148
Bozeman, MT 59717-2340

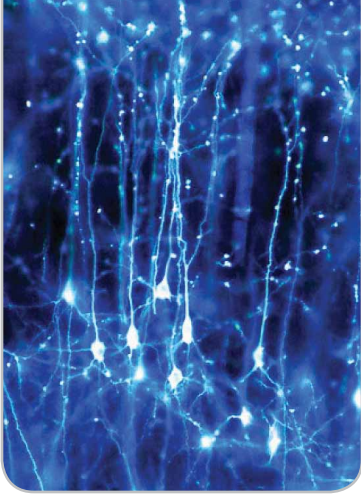
Phone: 406-994-5120
Fax: 406-994-7077

Email: cbn@cns.montana.edu

Web: www.montana.edu/cbn/

MONTANA STATE UNIVERSITY
DIVISION OF GRADUATE EDUCATION





ADMISSION REQUIREMENTS

The following are the minimum requirements for admission to the graduate program in the Department of Cell Biology and Neuroscience:

- 3.0 undergraduate GPA (on a 4.0 scale) or equivalent
- 1100 combined Verbal + Quantitative GRE score
- 3 letters of recommendation
- 550 written (or 213 computerized) TOEFL score for international applicants with English as a second language

In exceptional circumstances specific requirements may be waived by the department head in consultation with the Graduate Admissions Committee. In such cases the applicant may be granted Provisional Status and will be provided with a list of the specific requirement(s) that must be satisfied for full admission in a subsequent semester.

ADMISSION ADVICE

Complete applications and supporting materials must be received by February 15 for applicants to be considered for admission to graduate study beginning the following summer or fall semester. Applicants will be notified of the department's decision regarding admission to the graduate program no later than April 15.

It is strongly suggested that you contact (either by letter or email) one or more members of the faculty whose area of research is of potential interest to you at the time you submit your application. Descriptions of faculty research interests are available on the departmental website. Discussions with individual faculty can be very

useful in providing information about specific graduate research opportunities, sources of financial support, and other questions you may have concerning the application process and graduate education in general.

APPLICATION PROCEDURES

To apply for admission to one of the graduate training programs in CBN, please send the following to the address below:

- Personal statement describing your interest in neuroscience and reasons for wishing to study in our department
- Official copies of GRE scores (and TOEFL scores if English is not your first language)
- Official college transcripts
- Three letters of recommendation

Only applicants with complete applications can be considered for admission.

Please note that interested students **DO NOT** have to complete a separate application to the MSU Division of Graduate Education when applying to the department, and **DO NOT** have to pay an application fee. If accepted into the CBN graduate program, the department will assist with completing and submitting the necessary application materials to the Division of Graduate Education for final approval. Please have supporting materials (GRE and TOEFL scores, official college transcripts, and three letters of recommendation) sent to the following address:

Department of Cell Biology and Neuroscience
Montana State University
513 Leon Johnson Hall
P.O. Box 173148
Bozeman, MT 59717-3148

ASSISTANTSHIPS

Individuals accepted into the graduate program will be considered for financial support as a Graduate Research Assistant or Graduate Teaching Assistant. Graduate Teaching or Research Assistantships are awarded competitively on the basis of the applicant's qualifications and potential ability to perform the duties of each position.

FACULTY

DEPARTMENT HEAD

Thomas Hughes
Biophysics
thughes@montana.edu

Roger Bradley
Developmental neuroscience
rbradley@montana.edu

Cassie Cusick
WWAMI Medical Education Program
ccusick@montana.edu

Steven Eiger
WWAMI Medical Education Program
eiger@montana.edu

Susan Gibson
WWAMI Medical Education Program
skgibson@montana.edu

Charles Gray
Neurophysiology of visual perception and cognition
cmgray@cns.montana.edu

Gwen Jacobs
Systems neuroscience, informatics and information technology
gwen@cns.montana.edu

Frances Lefcort
Molecular and cellular neural development
lefcort@montana.edu

Christa Merzdorf
Developmental neurobiology
merzdorf@montana.edu

John Miller
Neurophysiology
jpm@cns.montana.edu

Sheila Nielsen-Preiss
Molecular microbiology
sheila.nielsenpreiss@montana.edu

Steve Stowers
Molecular genetics
sstowers@montana.edu