

Montana State University



– MSU TOMORROW – A CAMPUS PLAN FOR THE FUTURE

Long Range Campus Development Plan
2006

Creating Campuses



Why Plan?

Lack of Vision sets the stage for:

Unorganized Growth

Buildings Built in the Wrong Location

Invasion of Sacred Open Spaces

Confusing Pedestrian Pathways

Inappropriate Vehicular Traffic System

Unplanned, Leftover Campus Spaces

Loss of natural Resources

Lack of “Sense of Community”

A “*Shared Vision*” the Framework for Future Growth

The FRAMEWORK PLAN contains:

Campus Image

Campus Entries

Location of Building Sites and Large Land Uses

Identification of Sacred Open Areas

Pedestrian Circulation

Vehicular Circulation

Gathering Spaces

Greenway Connections

Historical Buildings

Comprehensive Campus Plan Objectives

Plan for enrollment growth

Test the responsible capacity of the campus boundaries

Enhance campus community through better connectivity and improved intellectual open space

Guide current and future building projects to promote the essence of the MSU's campus and the university's academic mission

Engage the community and city of Bozeman as partners in the planning process

Rectify current space deficits

Act as leaders in addressing regional environmental issues

Image

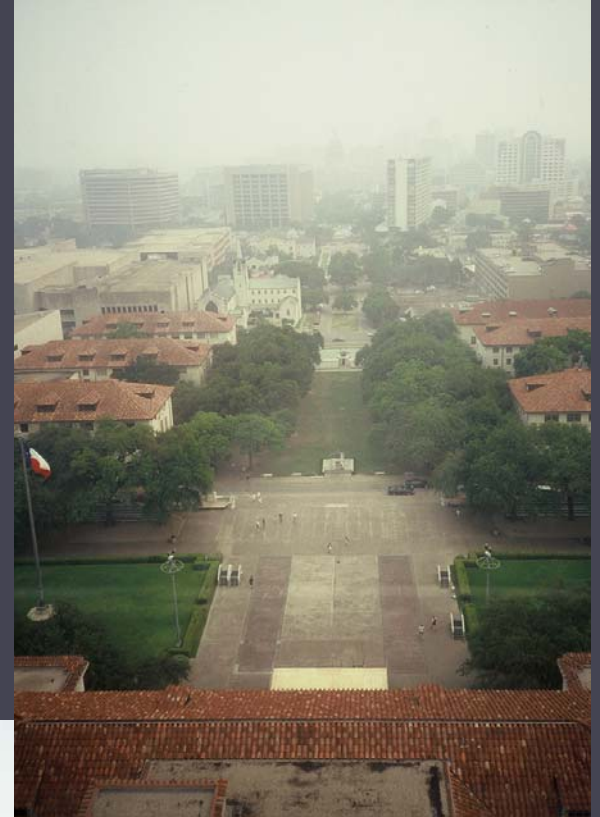


Image & Entry



Entry





Existing entry to campus

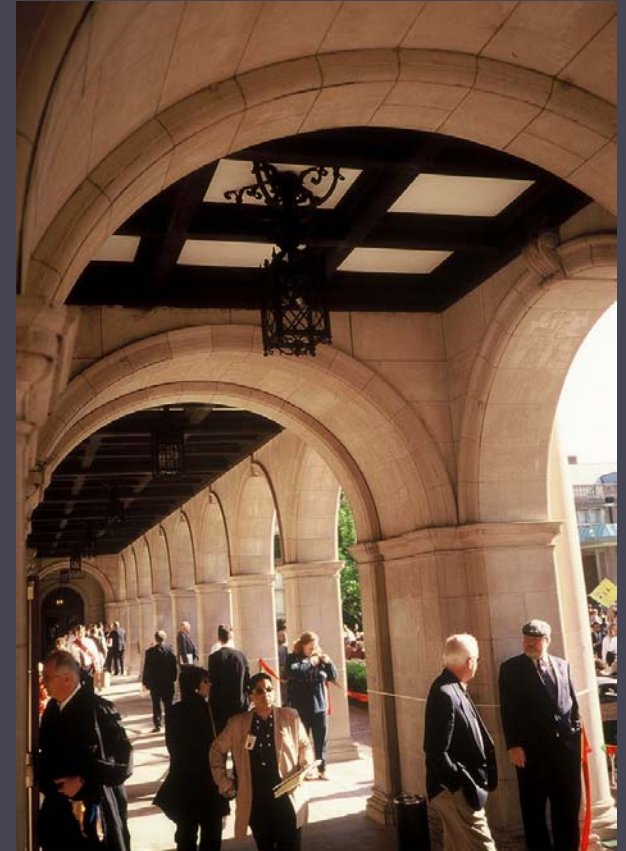


New gateway to the campus

Key Buildings



Pedestrian Circulation



Seating



Alternative Transportation



Gathering Spaces



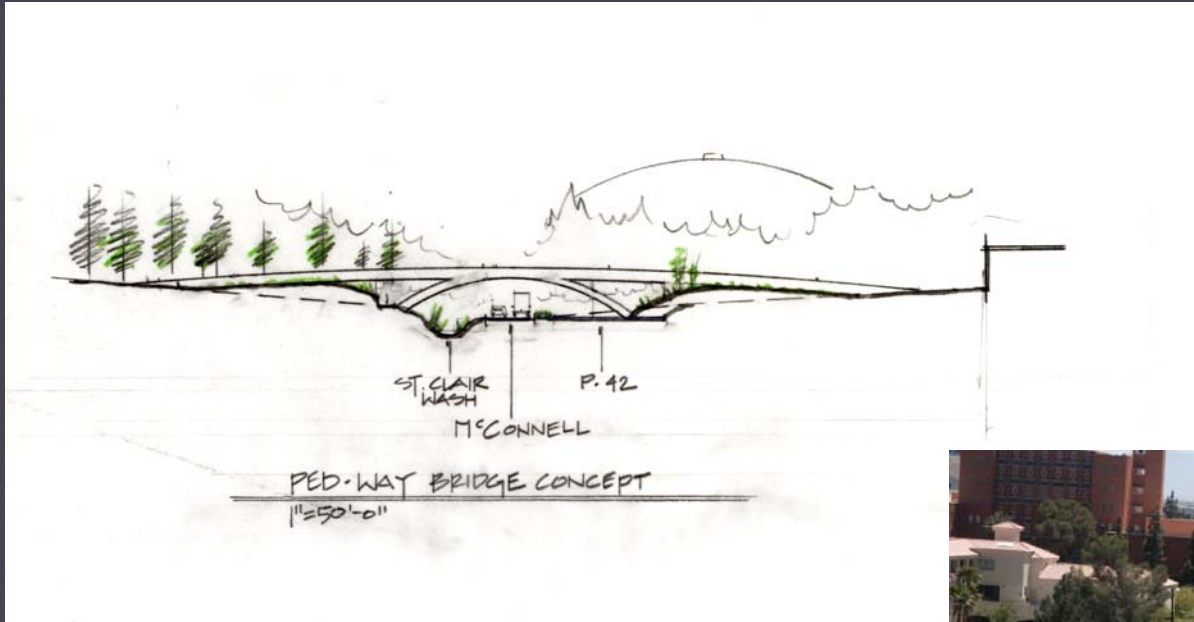
Connections



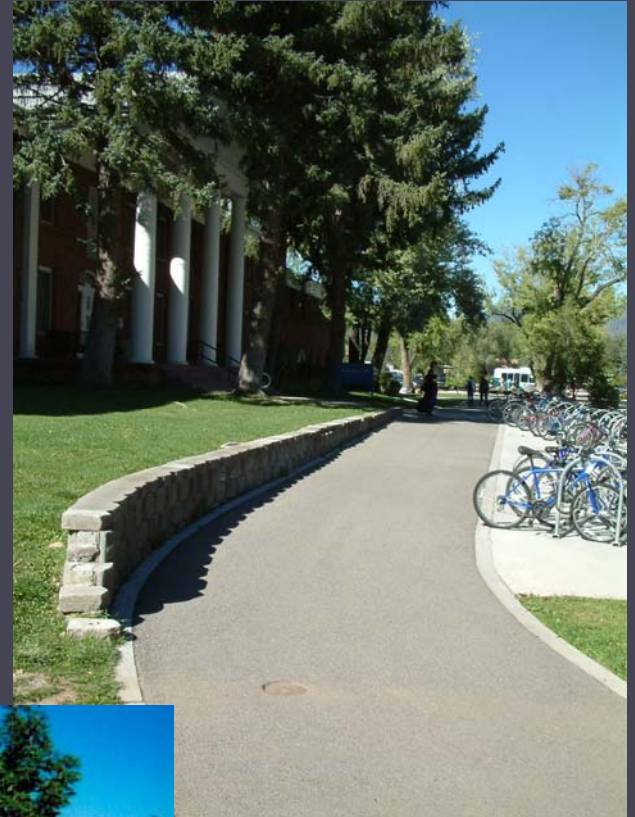
Connections becoming Spaces



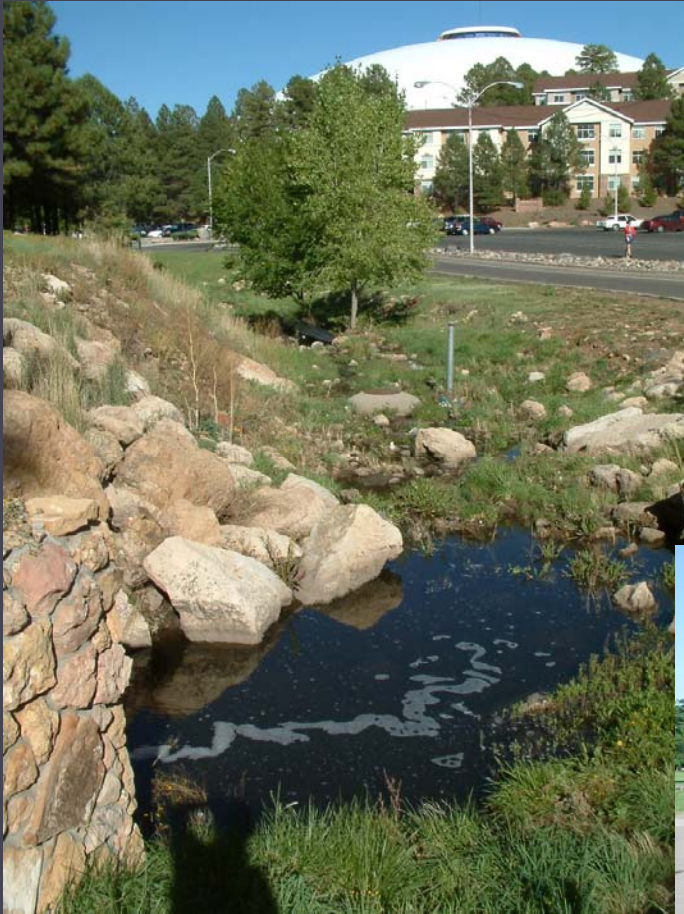
Connections



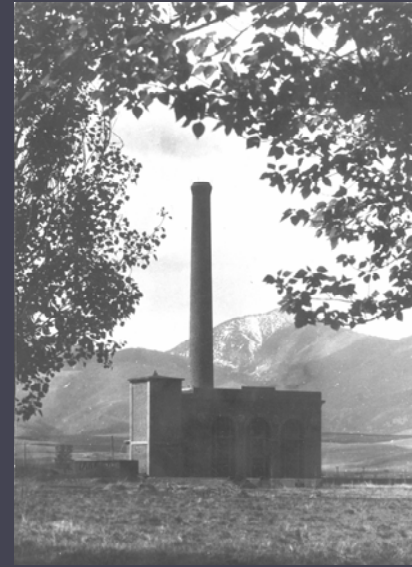
Edges



Landscape - Image



History



Agriculture





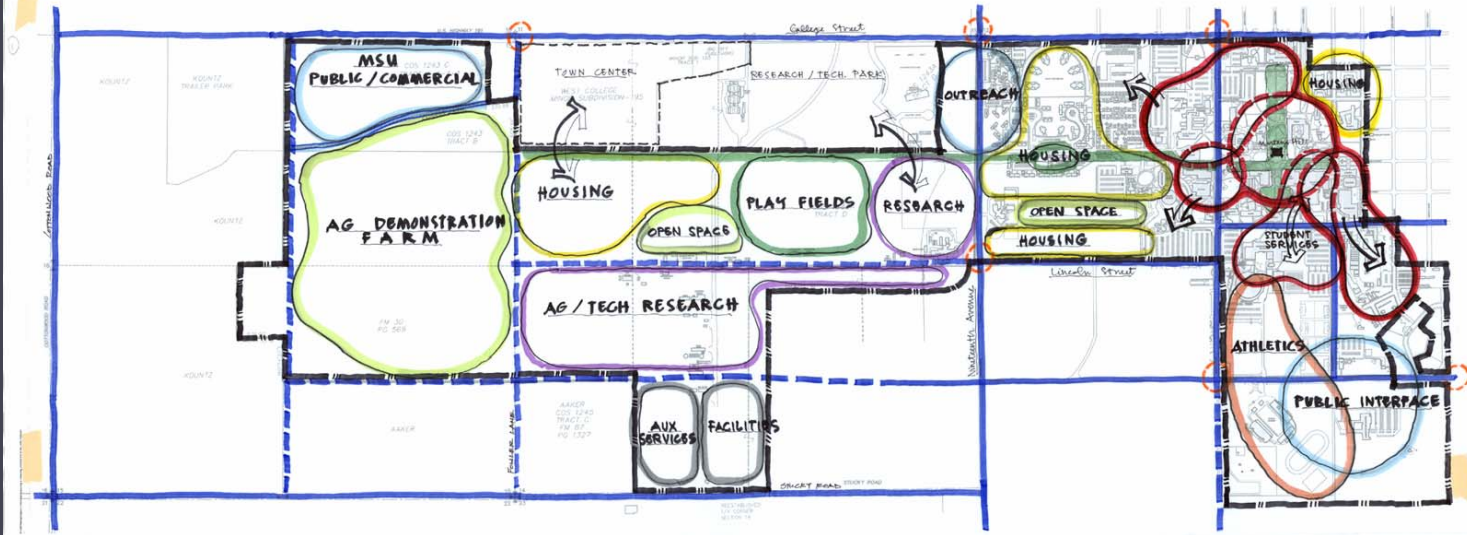




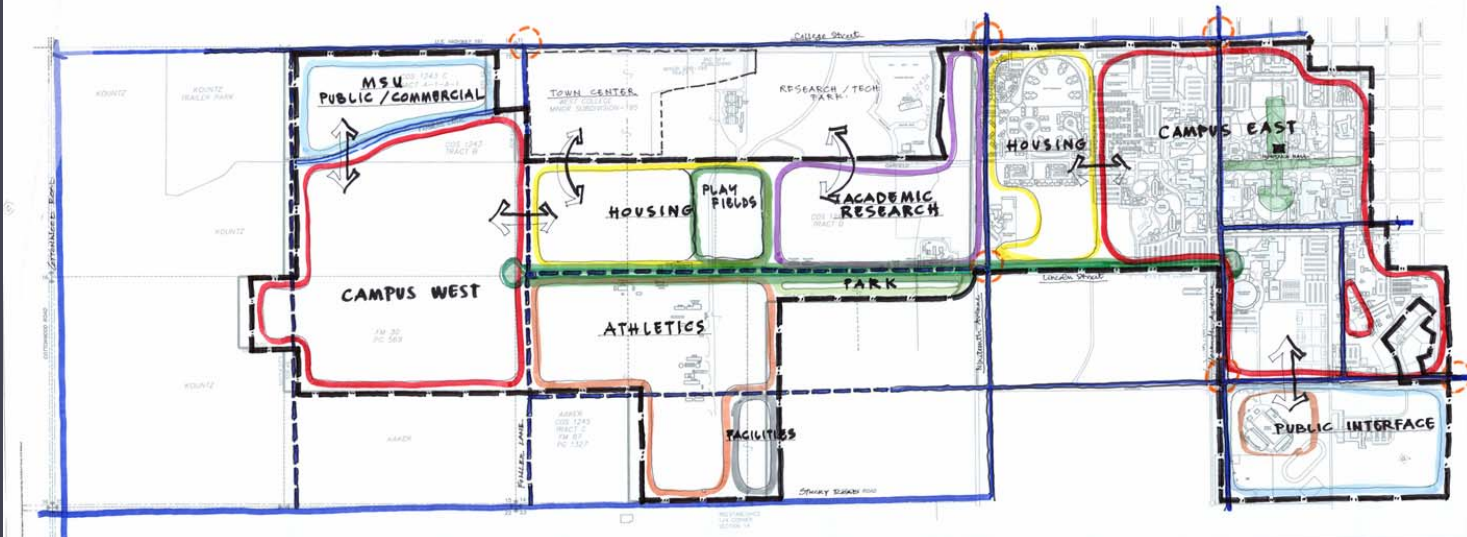
Campus Land and Building Data

Campus Acreage:	952 Acres
Campus Building Area:	4,110,000 Gsf
Peak Decades of Construction:	
1890's thru 1940's	792,000 Gsf (19.3% of campus)
1950's	832,000 Gsf (20.2% of campus)
1960's	839,000 Gsf (20.4% of campus)
1970's	815,000 Gsf (19.5% of campus)
1980's thru 2003	832,000 Gsf (20.2% of campus)
Projected Growth 2005 thru 2035	1,500,000 Gsf (36.5% of current campus)

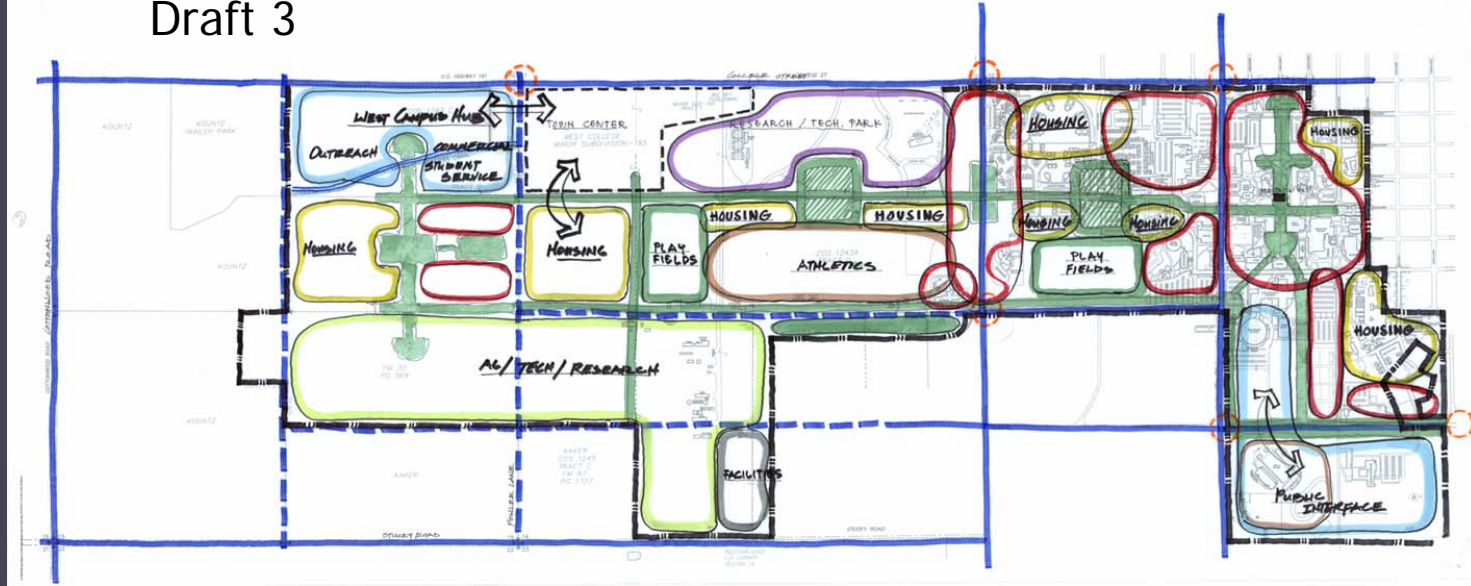
Draft 1



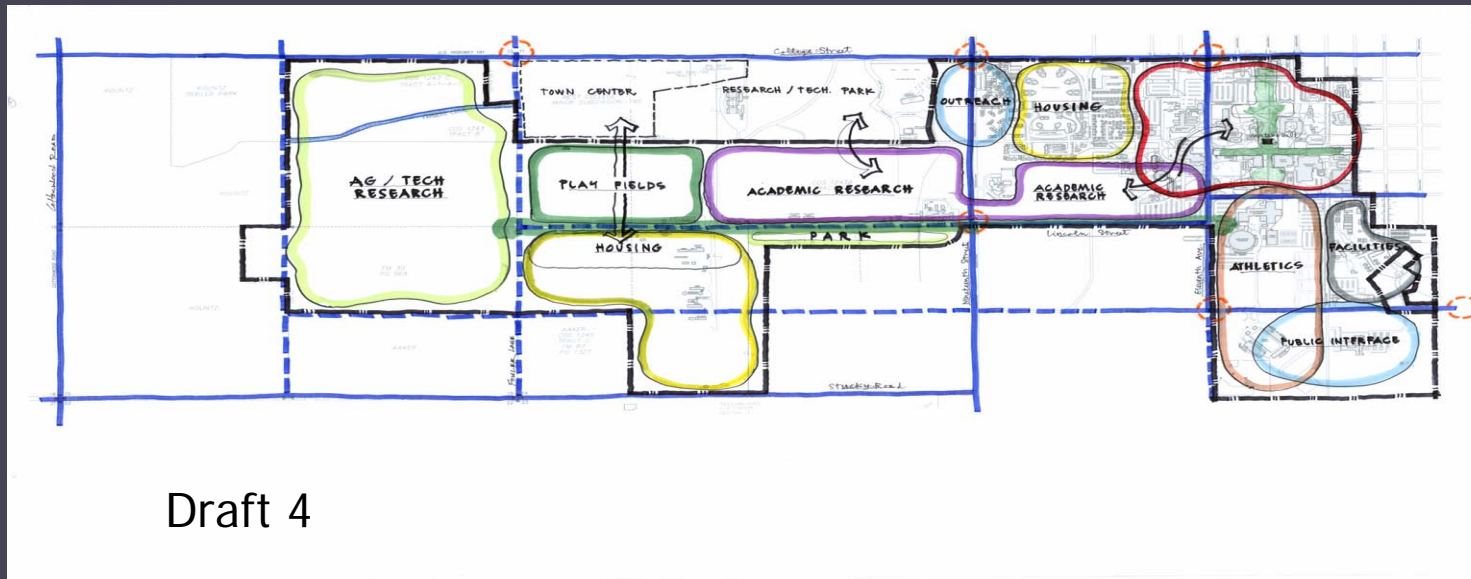
Draft 2



Draft 3



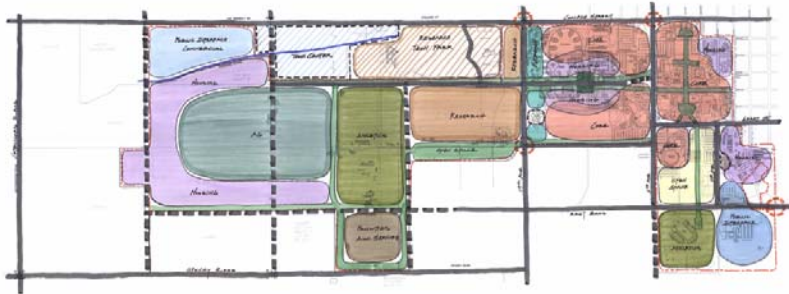
Draft 4



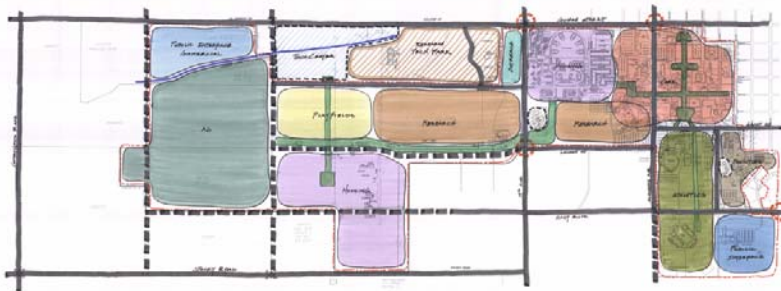
A

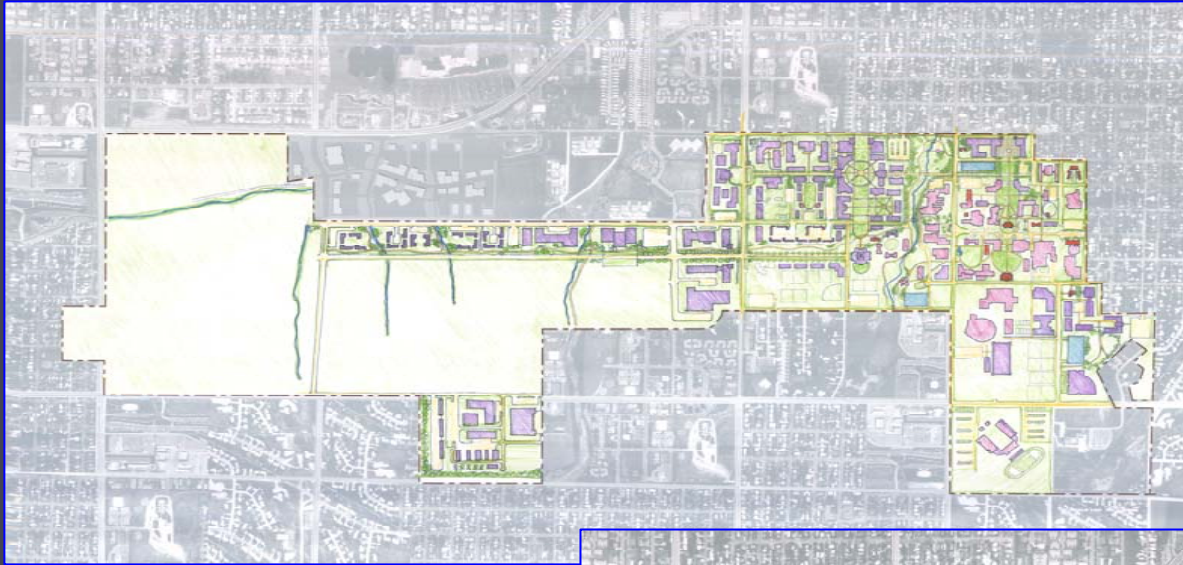


B



C





A



B



C



D

