

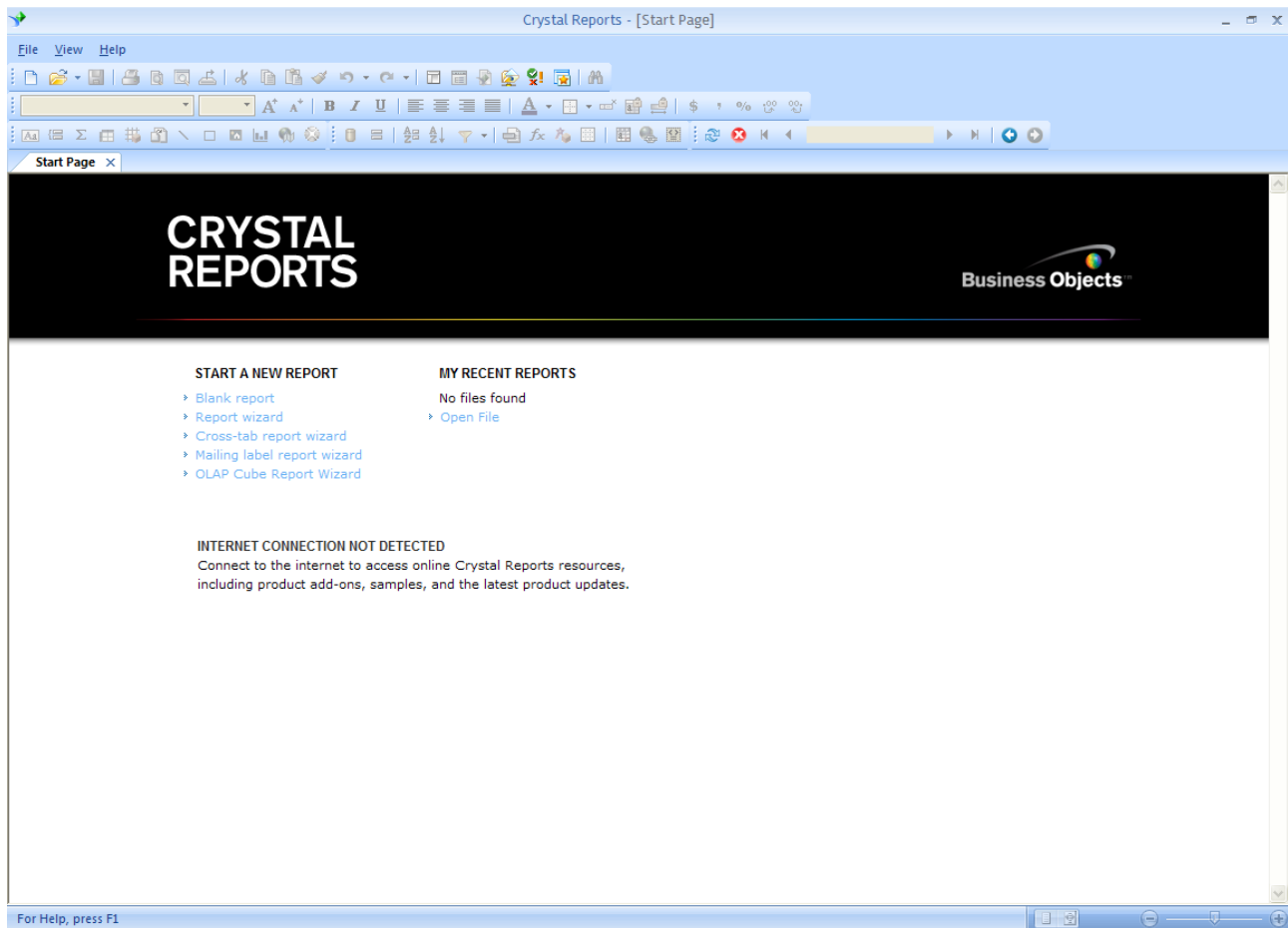
Connecting Crystal Reports 2008 to Oracle 10.2 ODBC

Document Revision 1.0

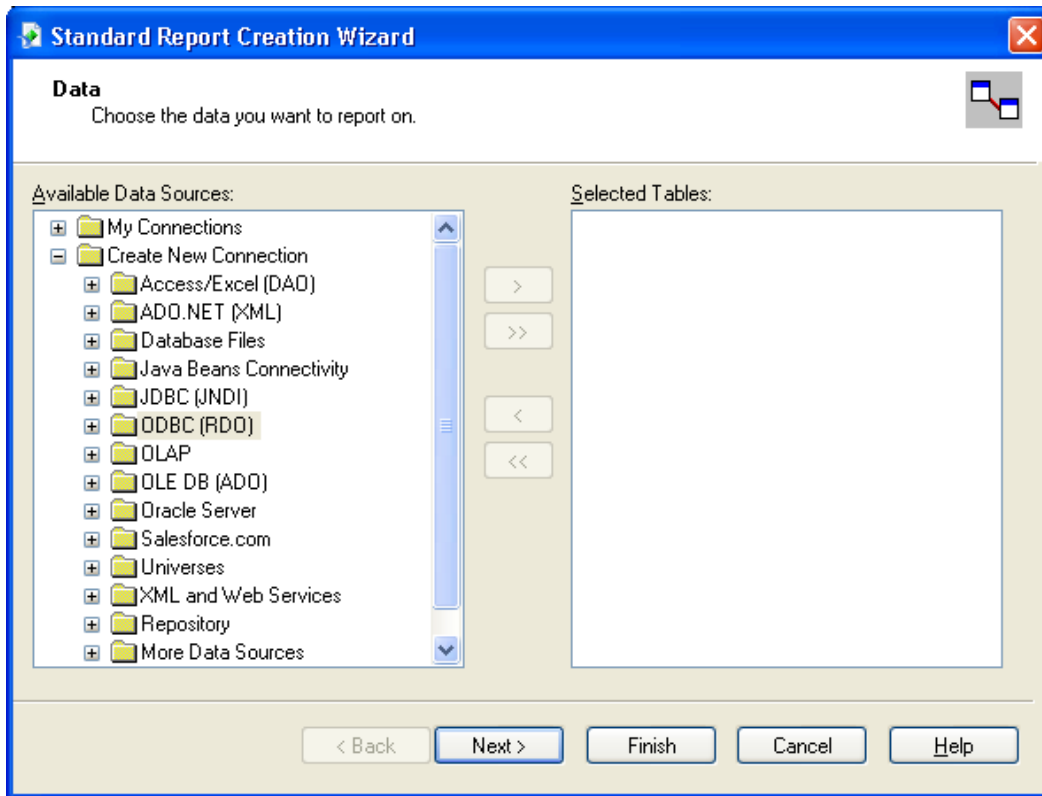
This document is targeted toward anyone using the updated Oracle 10.2 ODBC driver and Crystal Reports 2008.

Crystal Reports 2008 can run on Microsoft Windows Vista or Microsoft Windows XP Professional SP2. Software requirements include Adobe Acrobat 8.0, Flash Player 9, Microsoft Office 2003 SP2, Microsoft Office 2007, Microsoft Office XP SP2, Microsoft Office XP SP3. This version supports UTF8 characters.

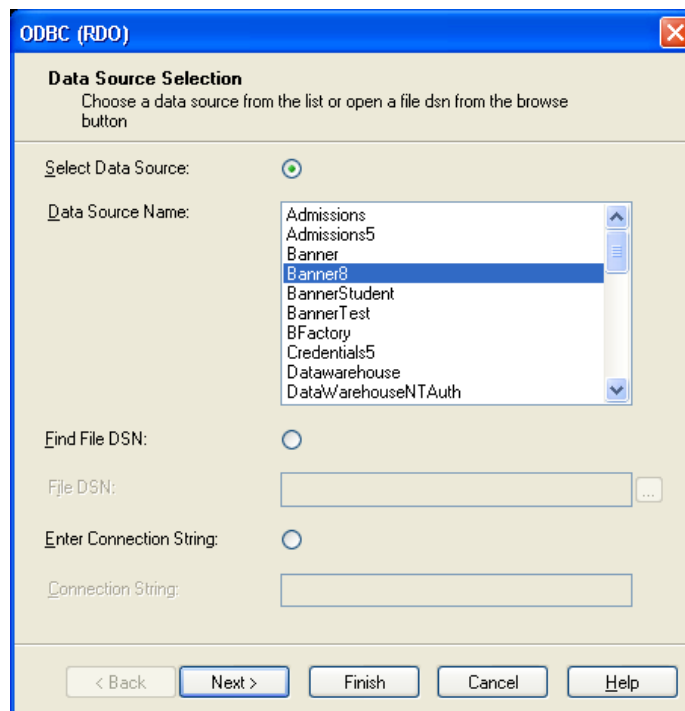
1. Click on Start - All Programs - Crystal Reports 2008. Under START A NEW REPORT choose the Report wizard option.



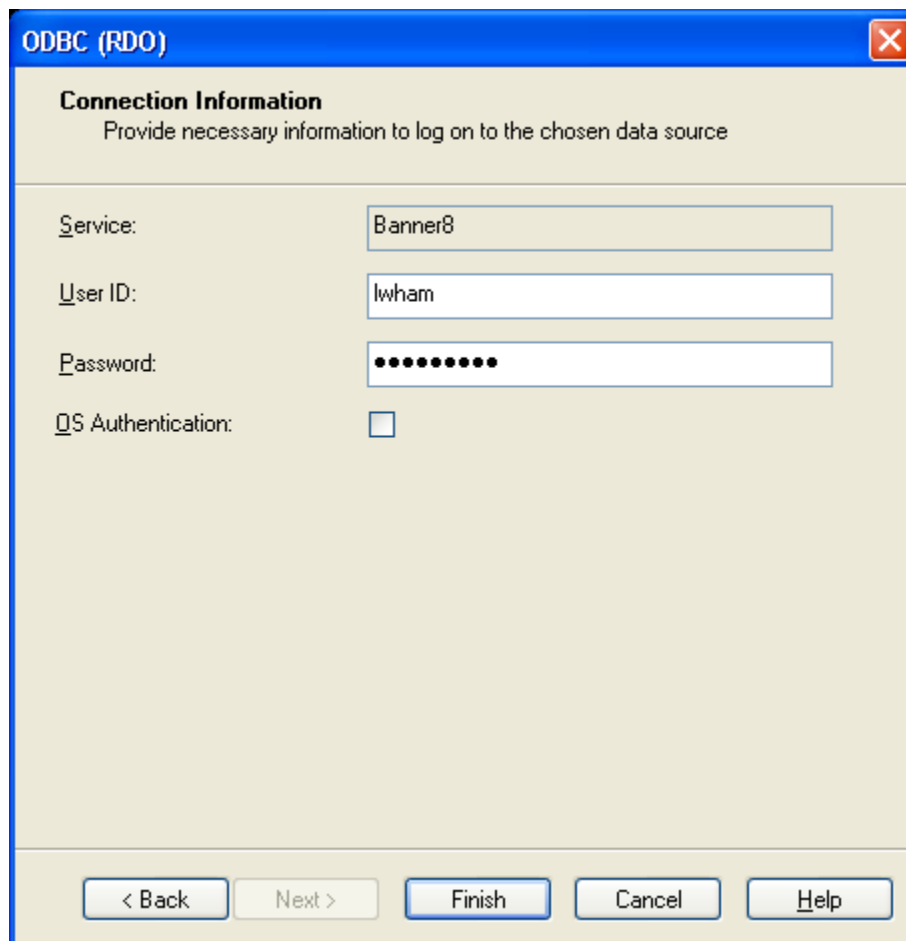
2. Click on the + symbol to open the Create New Connection folder, click on the + symbol to open ODBC (RDO) folder, and click on the Next button.



3. In the Data Source Selection window, click on Banner8 under Data Source.



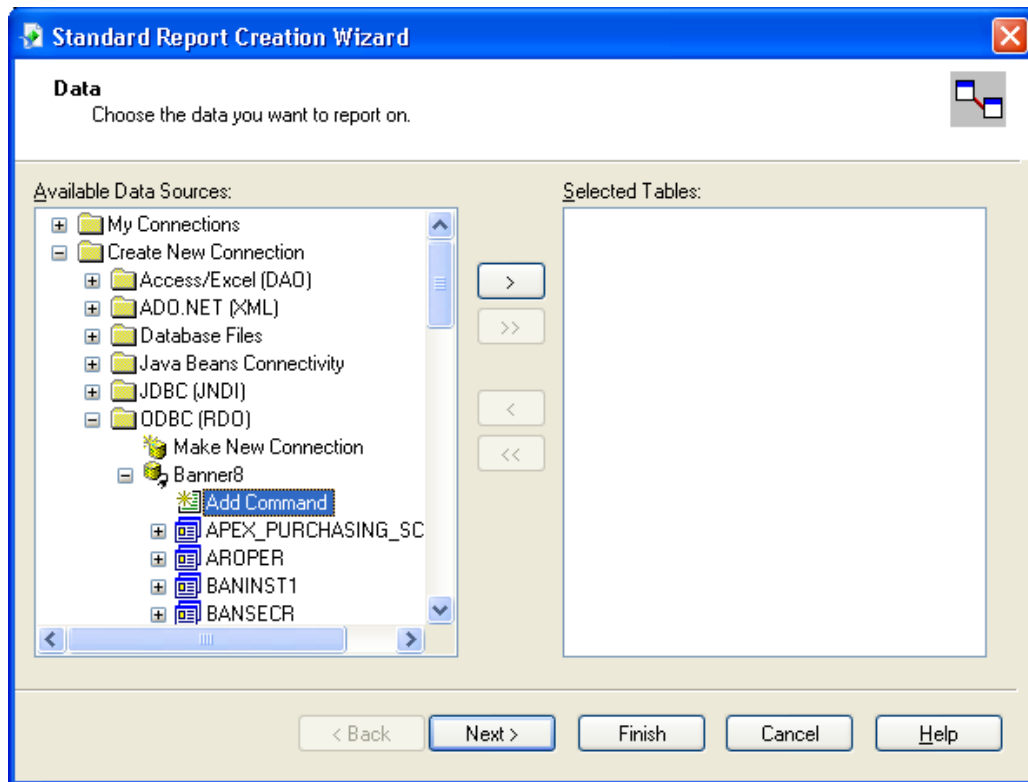
4. Click Next to go to the Connection Information screen.



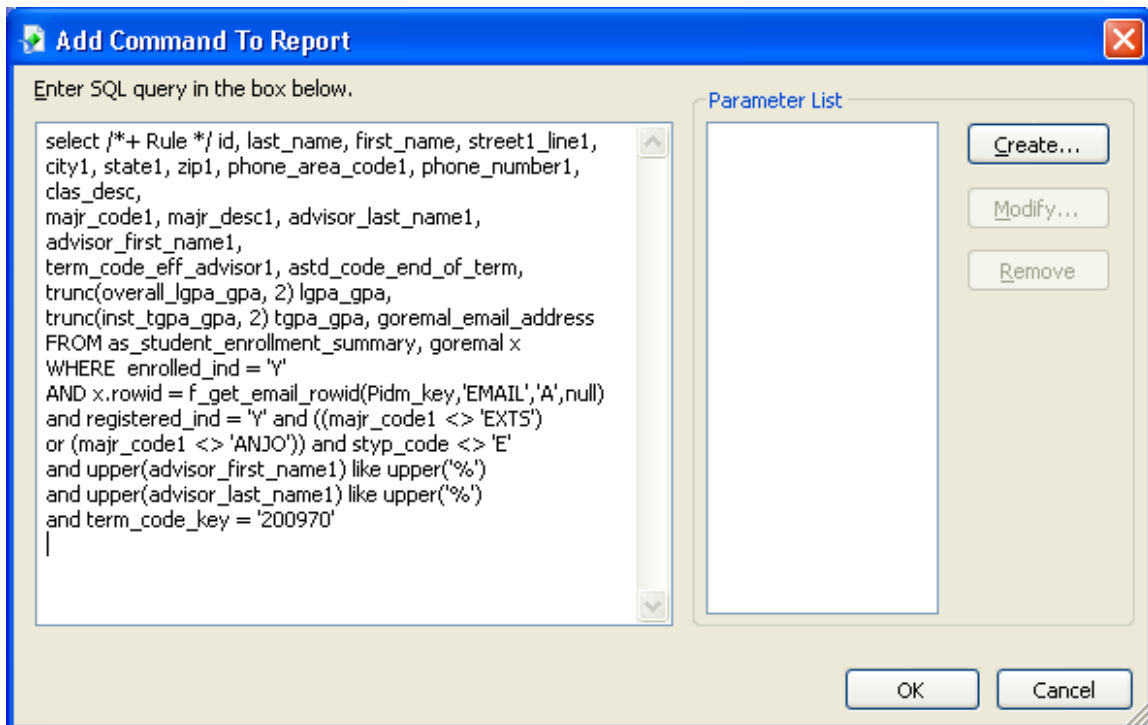
The screenshot shows a Windows-style dialog box titled "ODBC (RDO)". The main heading is "Connection Information" with a subtitle "Provide necessary information to log on to the chosen data source". The dialog contains four input fields: "Service:" with the text "Banner8", "User ID:" with the text "lwham", "Password:" with a masked field of ten black dots, and "OS Authentication:" with an unchecked checkbox. At the bottom, there are five buttons: "< Back", "Next >", "Finish", "Cancel", and "Help".

5. Enter your login information for Banner8 and click Finish to return to the Data window.

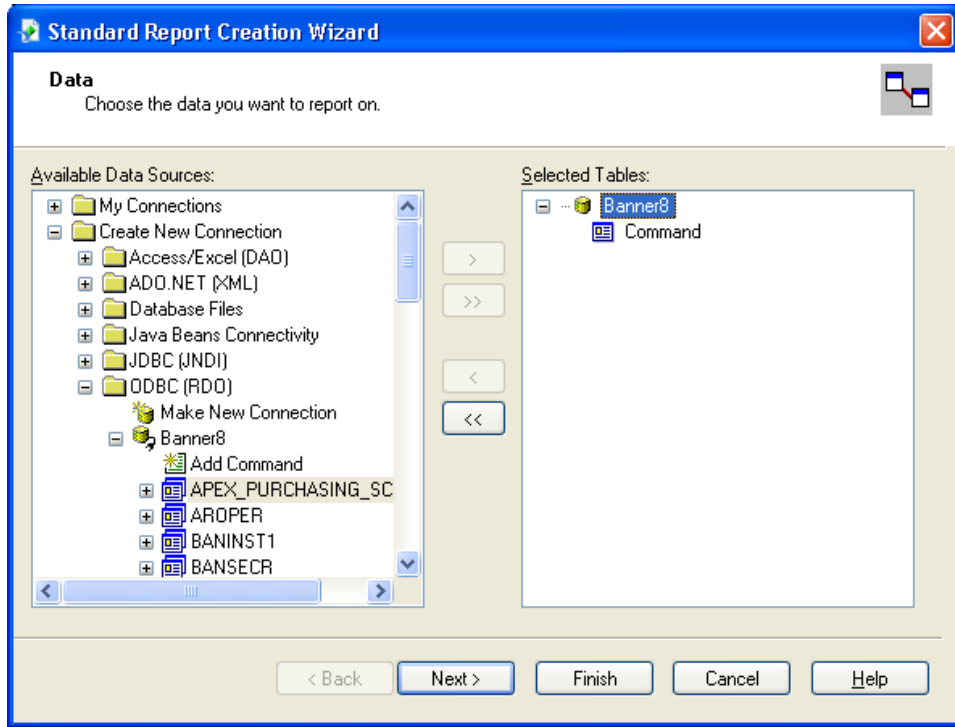
- In the Data window, click on Add Command under the Oracle Server folder to use SQL scripts.



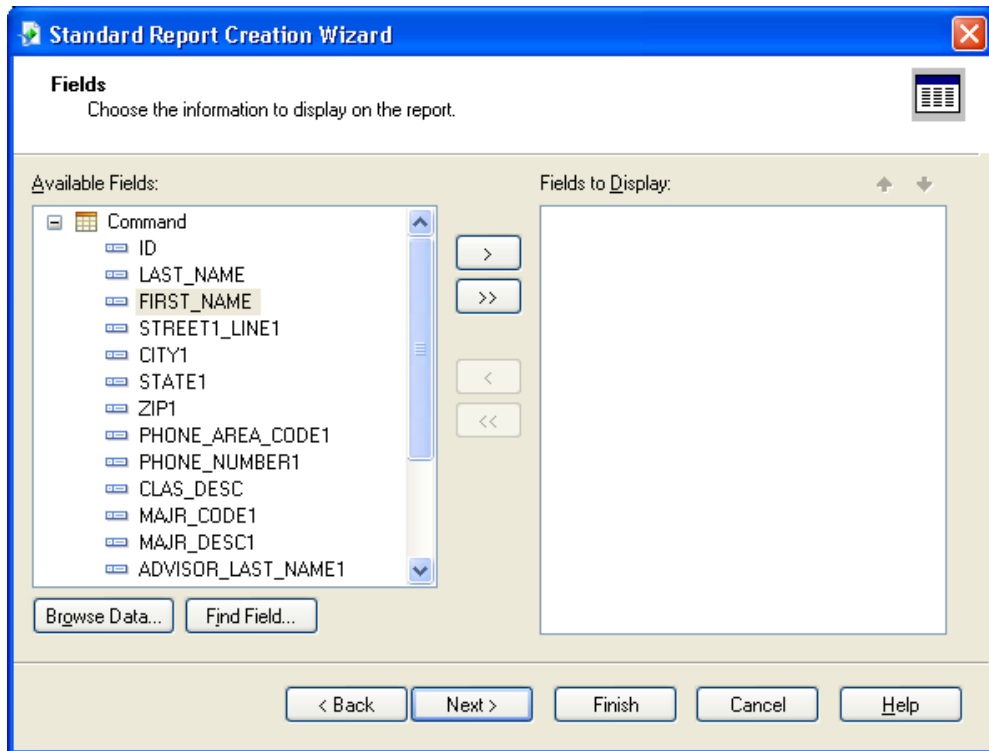
- Enter SQL script in the box provided, as illustrated below.



8. Click OK to return to the Data window.



9. Click Next.



10. Follow wizard to complete report.