

# Graduating Senior Survey

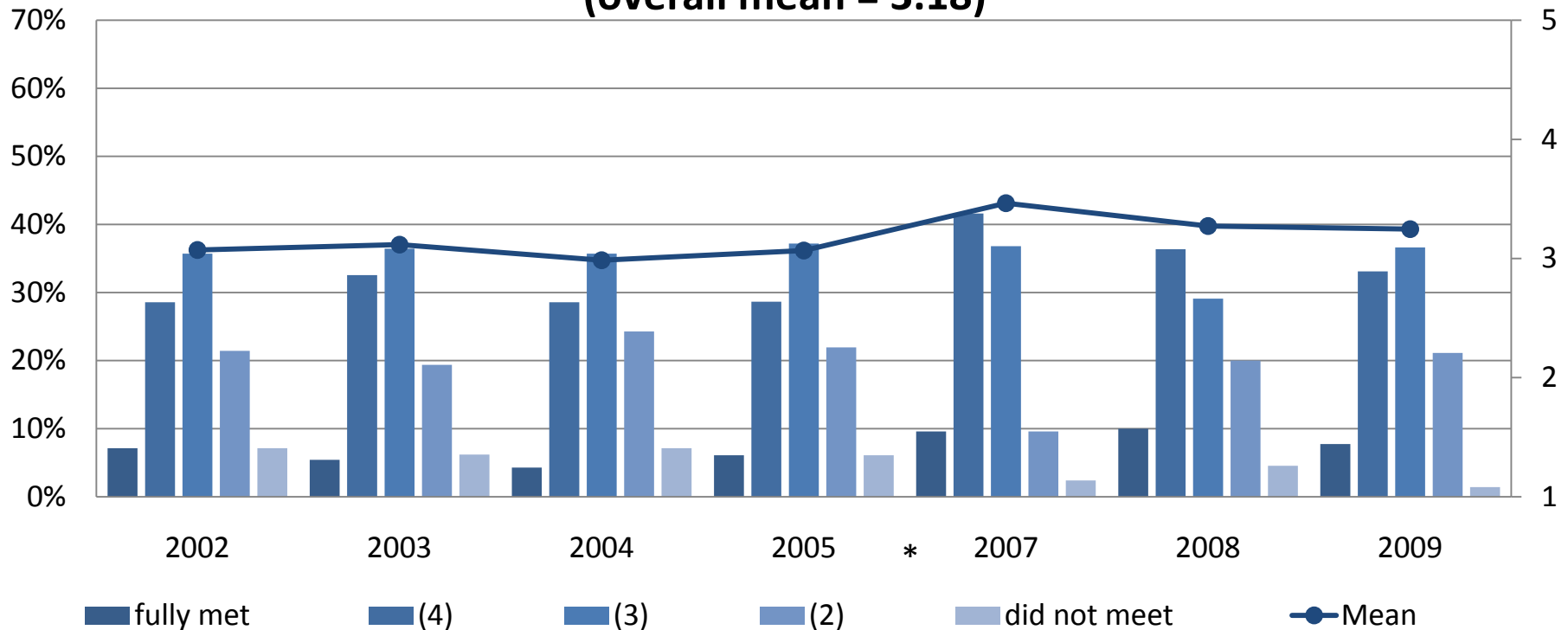
General Questions

Figure 1

Considering your overall experience as an MSU-Bozeman student, how would you rate MSU-Bozeman in terms of the following?

Provided regular assessment with meaningful feedback

(overall mean = 3.18)



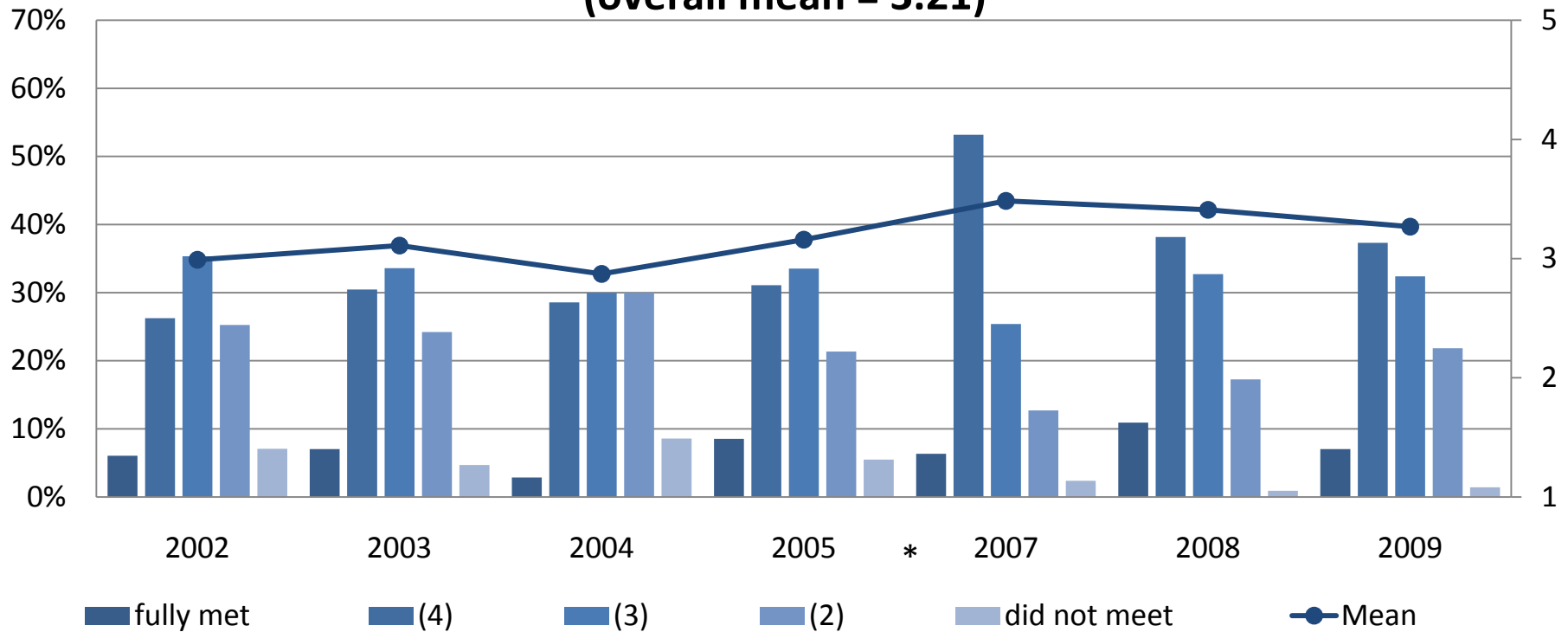
\* 2006 data not available

Figure 2

Considering your overall experience as an MSU-Bozeman student, how would you rate MSU-Bozeman in terms of the following?

Provided regular assessment with prompt feedback

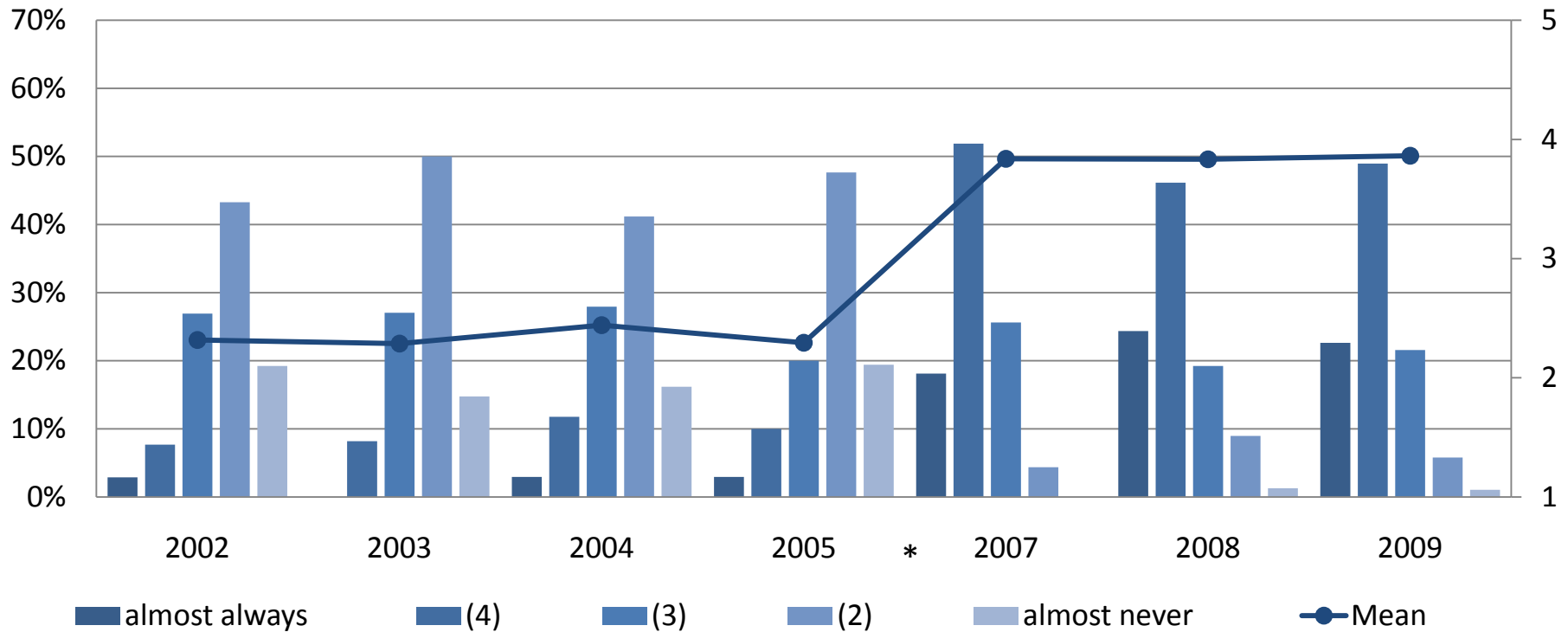
(overall mean = 3.21)



\* 2006 data not available

Figure 3

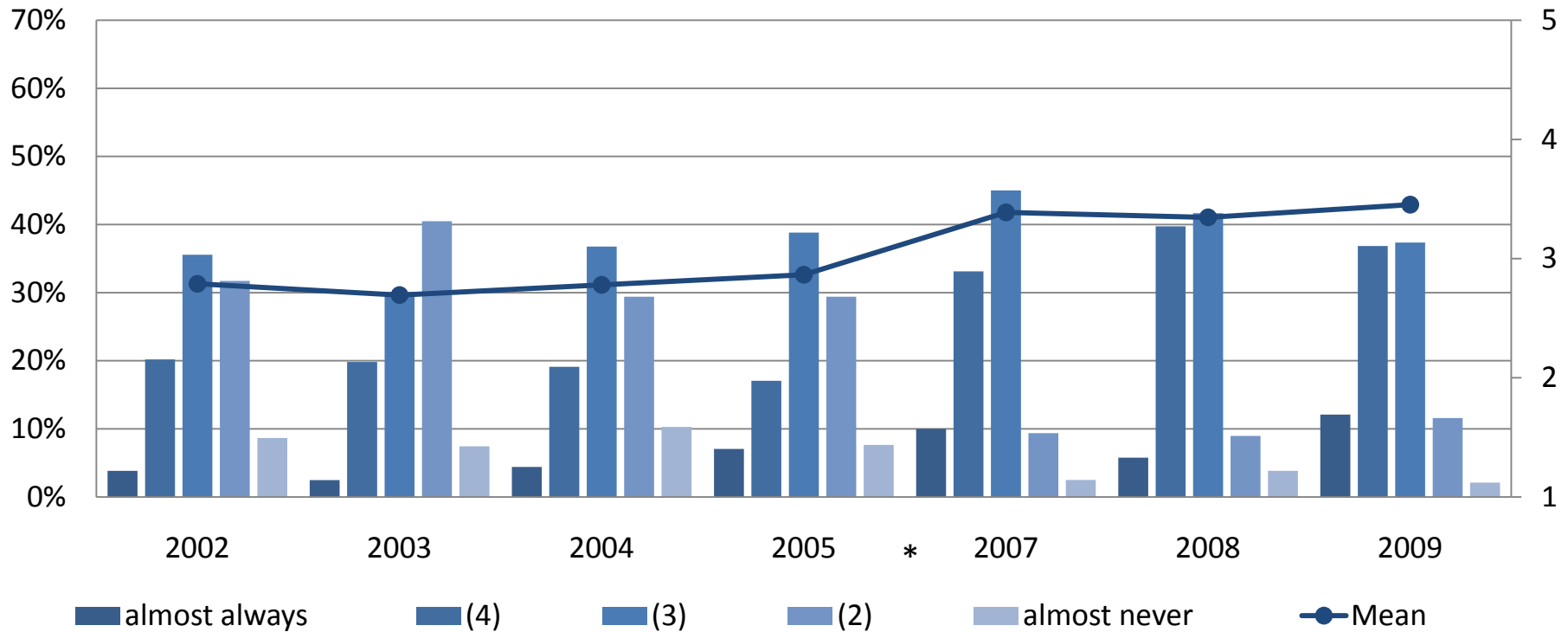
How often did your professors...Provide specific feedback on writing assignments?  
(overall mean = 3.12)



\* 2006 data not available

Figure 4

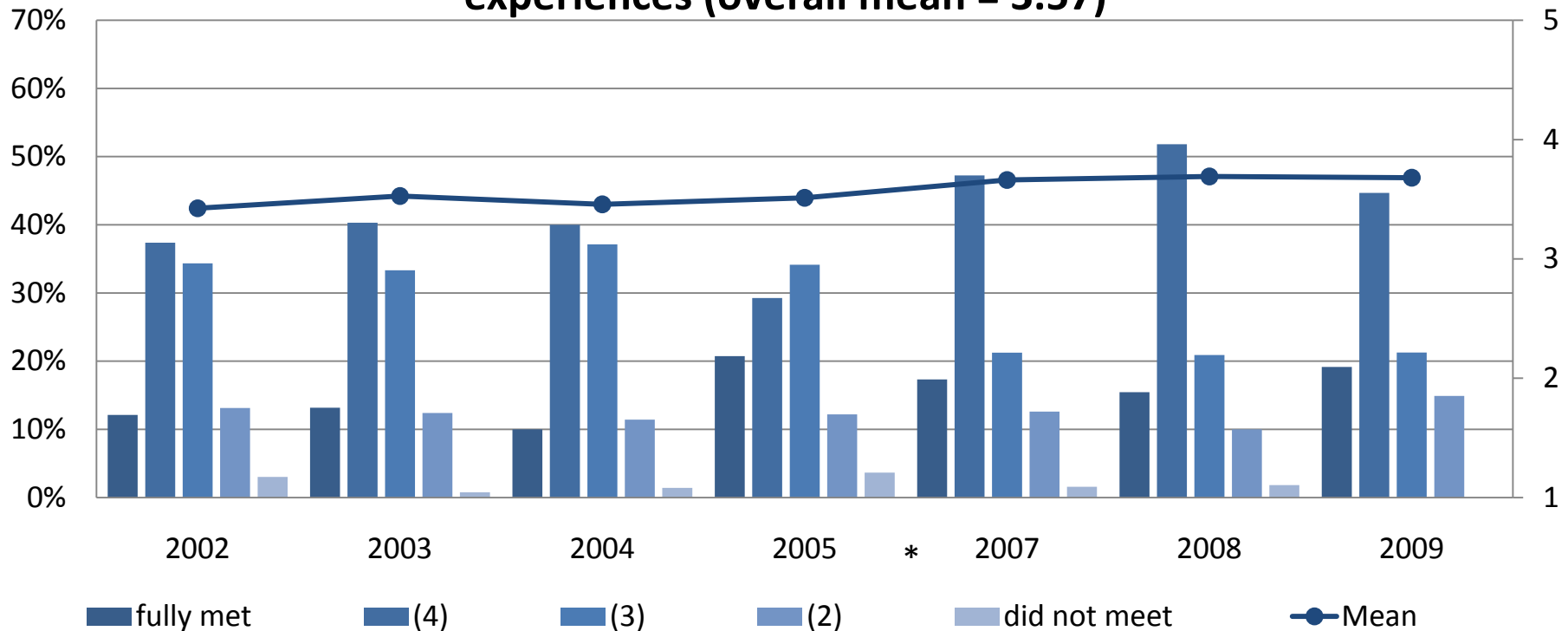
How often did your professors...Provide meaningful feedback after tests?  
(overall mean = 3.11)



\* 2006 data not available

Figure 5

Considering your overall experience as an MSU-Bozeman student, how would you rate MSU-Bozeman in terms of the following?  
Opportunities to synthesize learning in projects and research experiences (overall mean = 3.57)

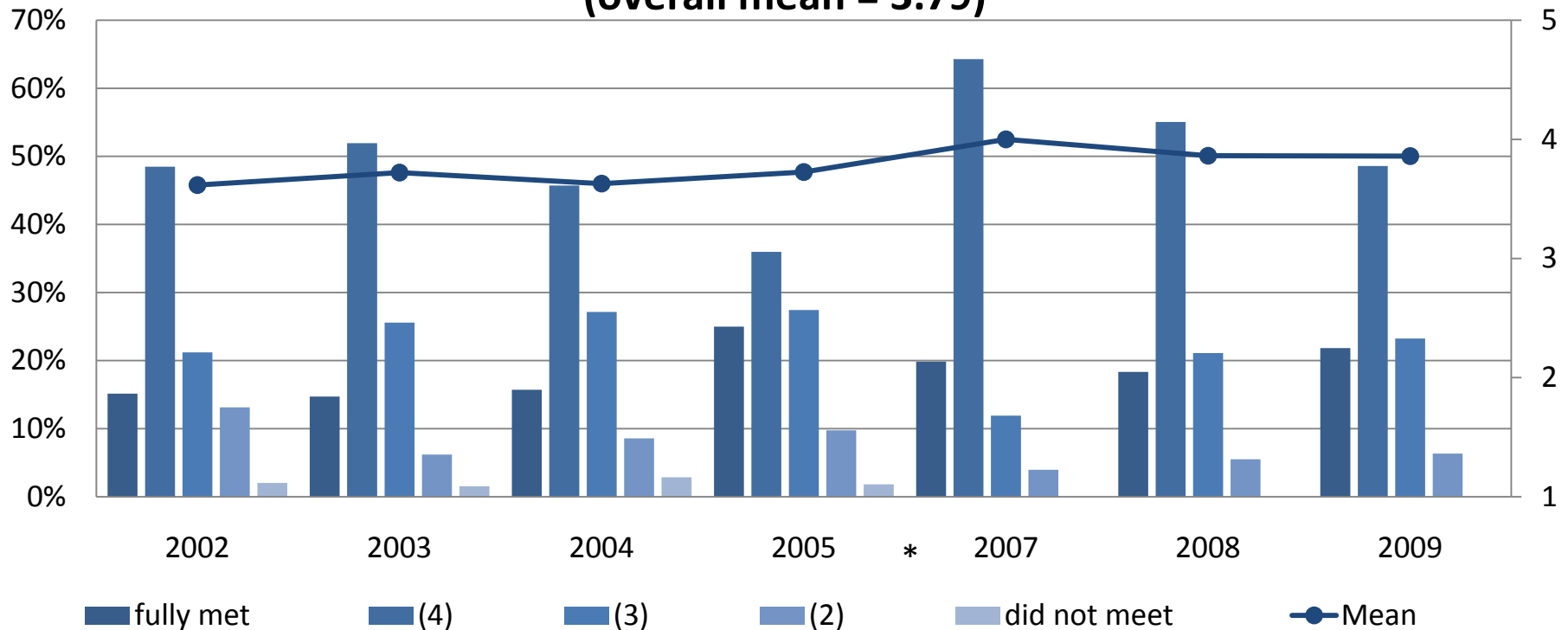


\* 2006 data not available

Figure 6

Considering your overall experience as an MSU-Bozeman student, how would you rate MSU-Bozeman in terms of the following?  
Provided opportunities for students to collaborate in teams

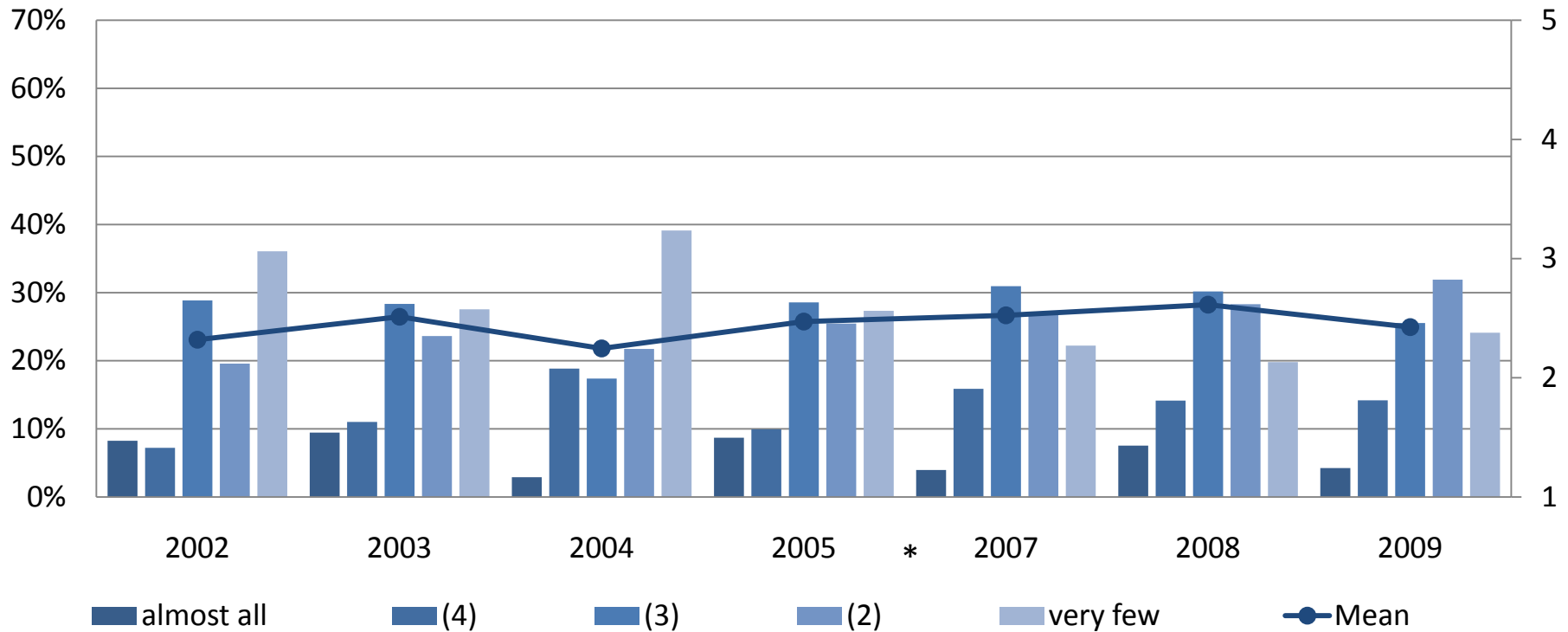
(overall mean = 3.79)



\* 2006 data not available

Figure 7

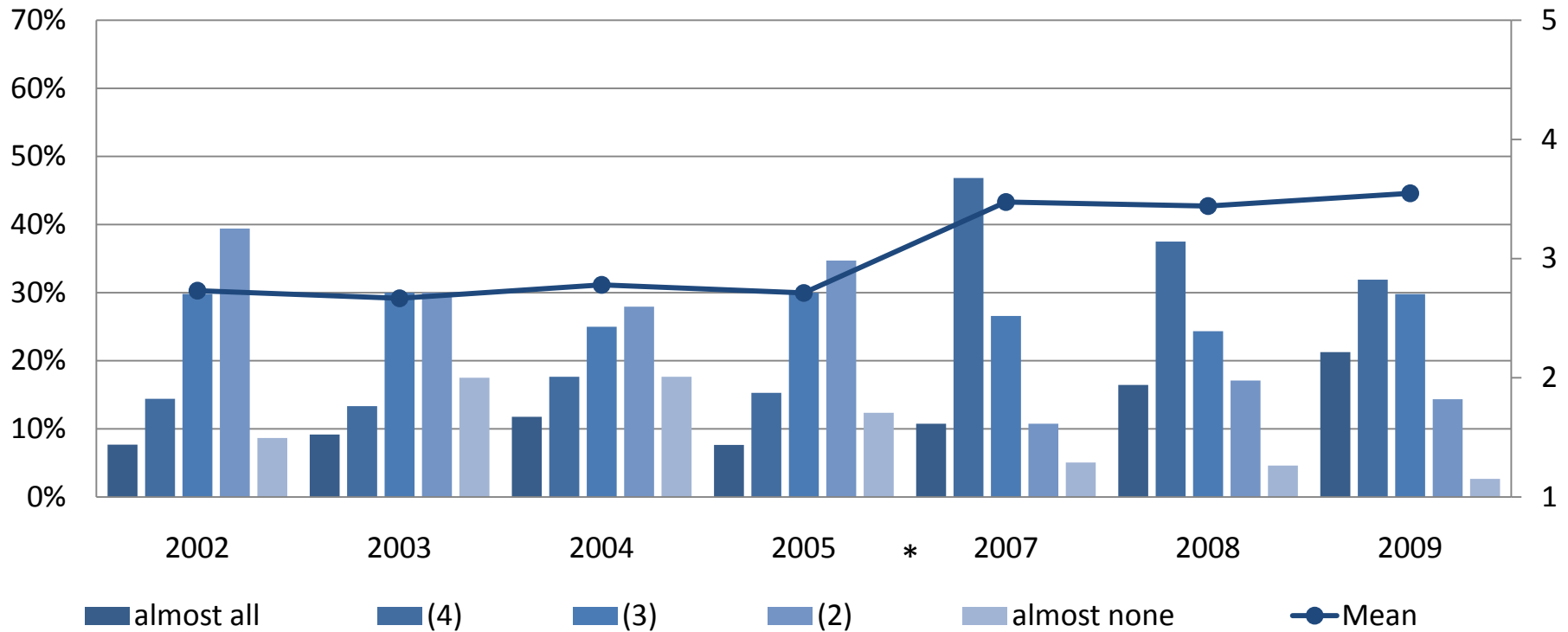
In about how many large lecture courses were "hands-on" projects or student research projects used?  
(overall mean = 2.46)



\* 2006 data not available

Figure 8

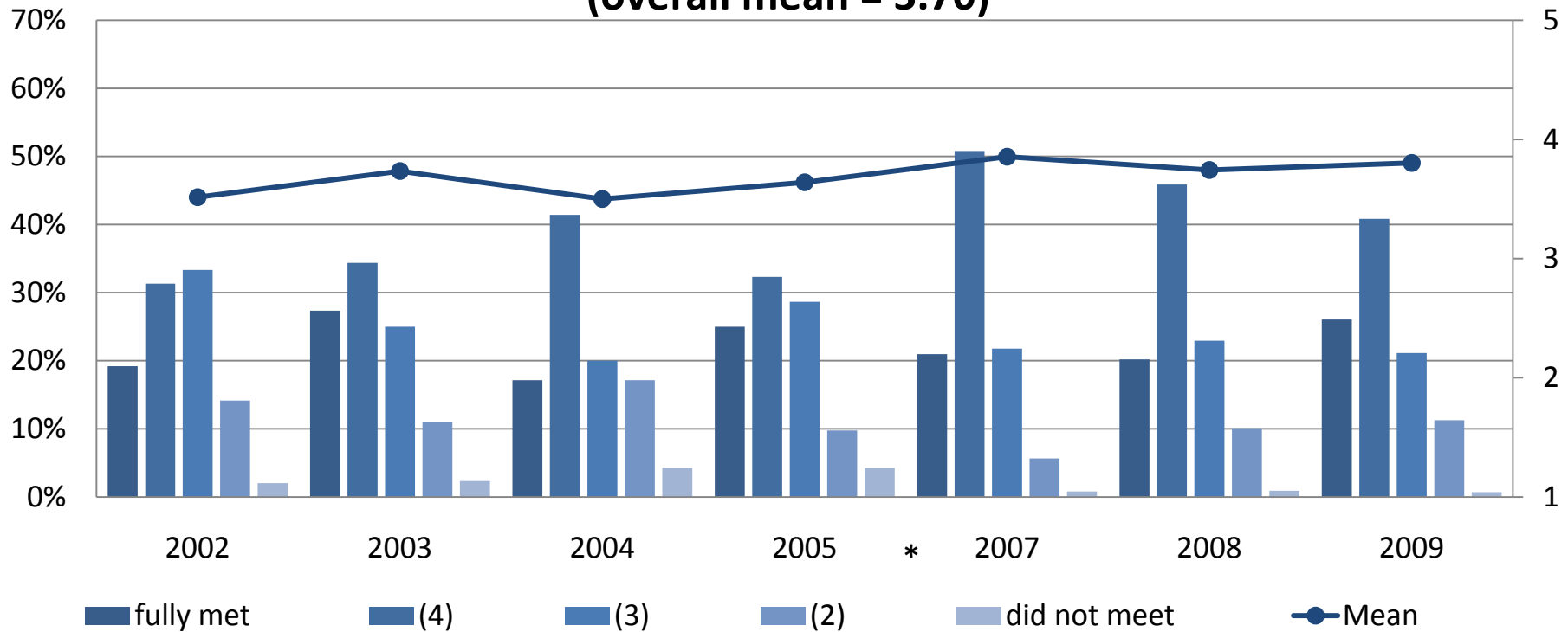
In how many of your classes were term projects used to calculate your course grade?  
(overall mean = 3.12)



\* 2006 data not available

Figure 9

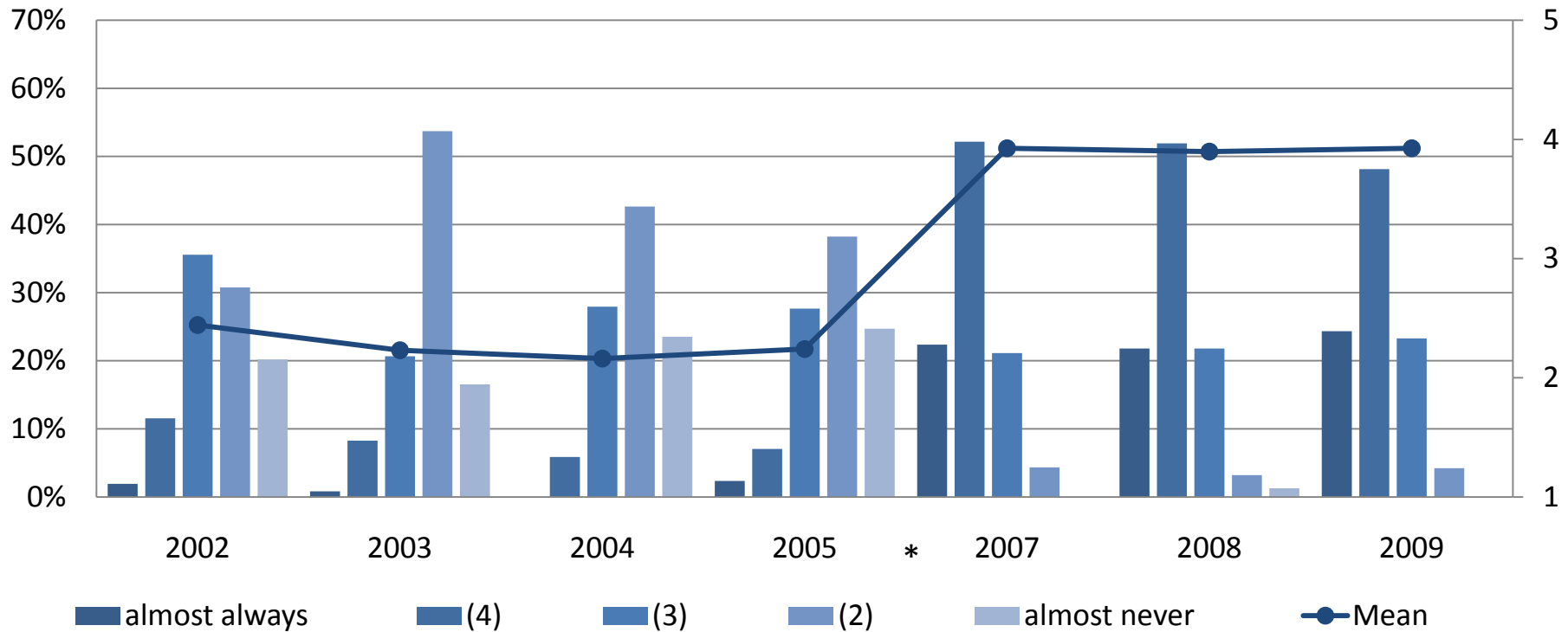
Considering your overall experience as an MSU-Bozeman student, how would you rate MSU-Bozeman in terms of the following?  
Provided ample opportunities for out-of-class contact with faculty  
(overall mean = 3.70)



\* 2006 data not available

Figure 10

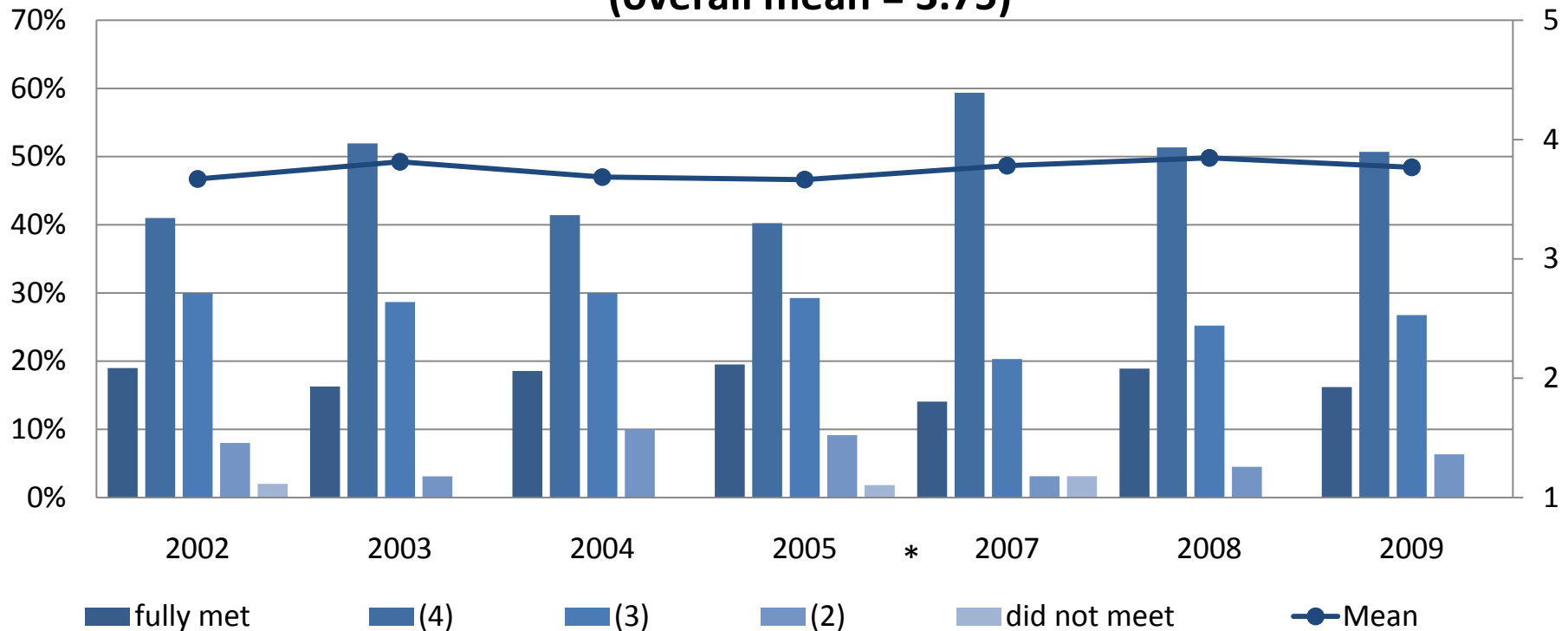
How often did your professors...Provide ample opportunity for help outside of class?  
(overall mean = 3.13)



\* 2006 data not available

Figure 11

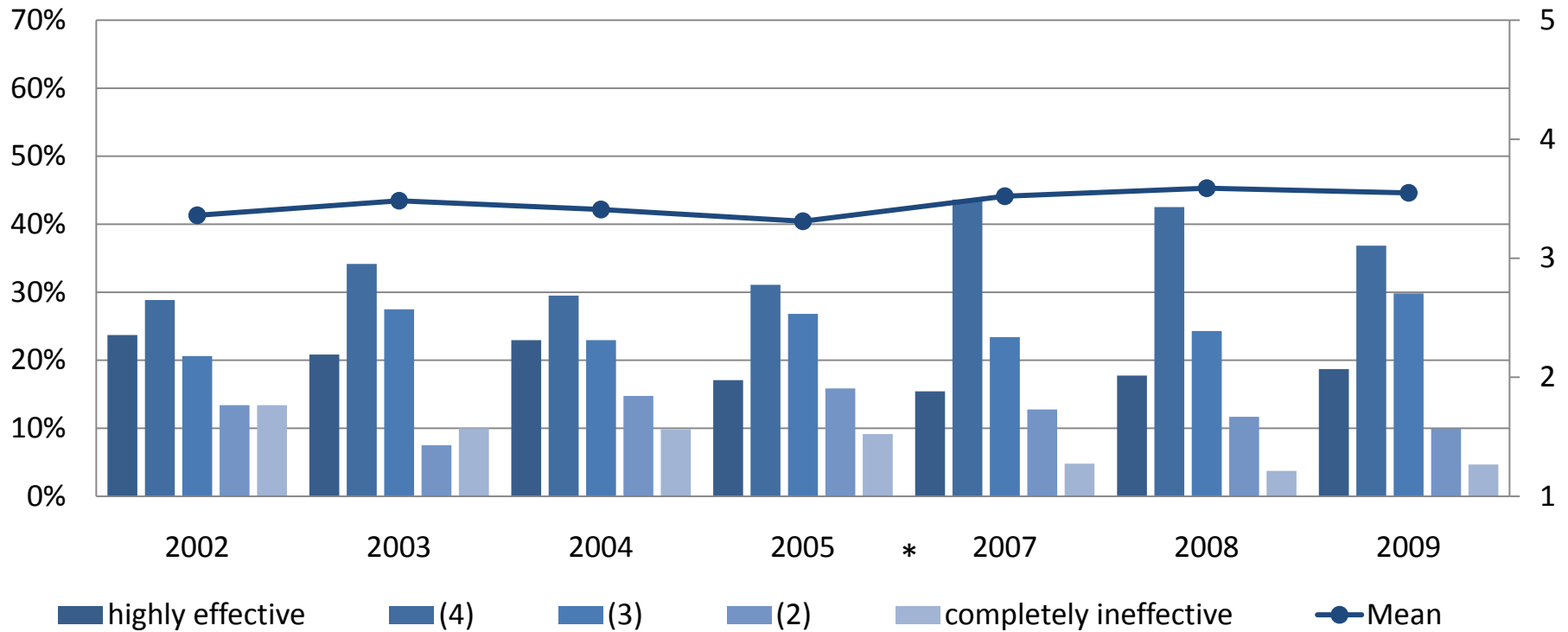
Considering your overall experience as an MSU-Bozeman student, how would you rate MSU-Bozeman in terms of the following? Set high expectations for learning (overall mean = 3.75)



\* 2006 data not available

Figure 12

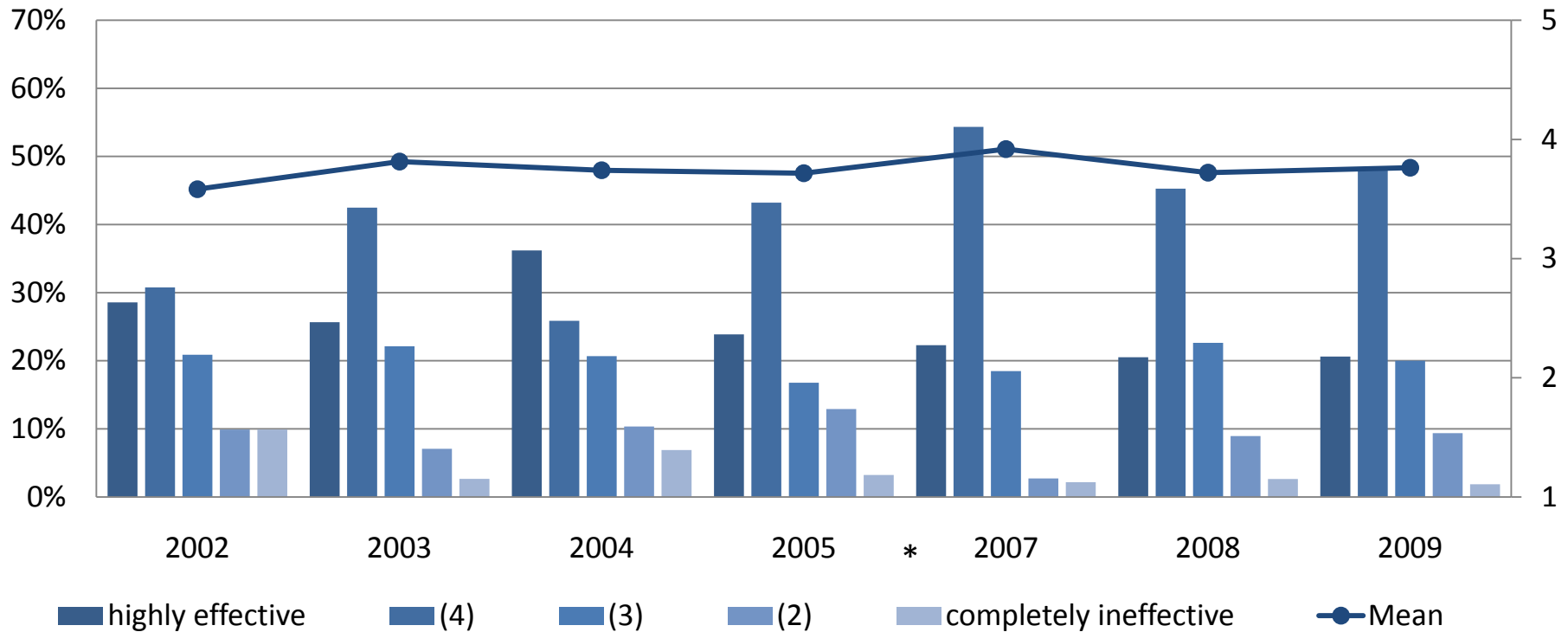
How would you rate the...Quality of preparation for employment  
(overall mean = 3.48)



\* 2006 data not available

Figure 13

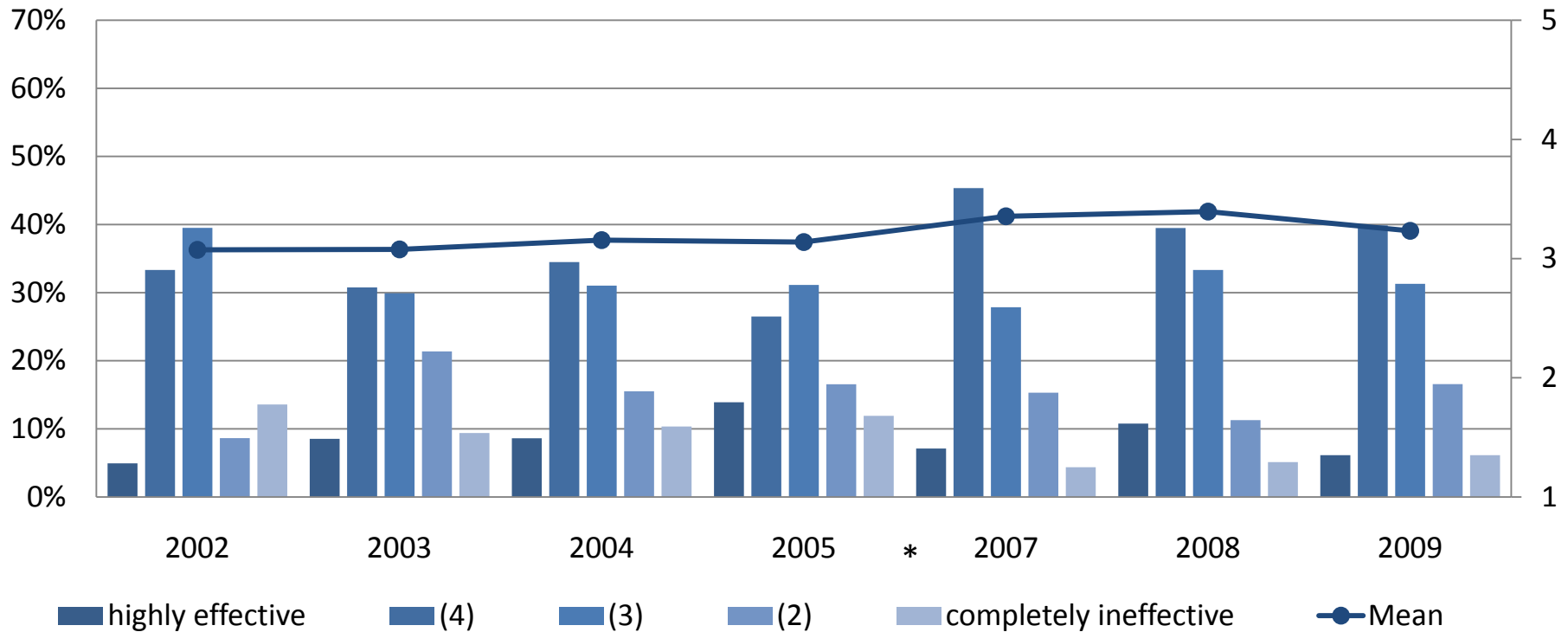
How would you rate the...Quality of preparation for graduate or professional school  
(overall mean = 3.76)



\* 2006 data not available

Figure 14

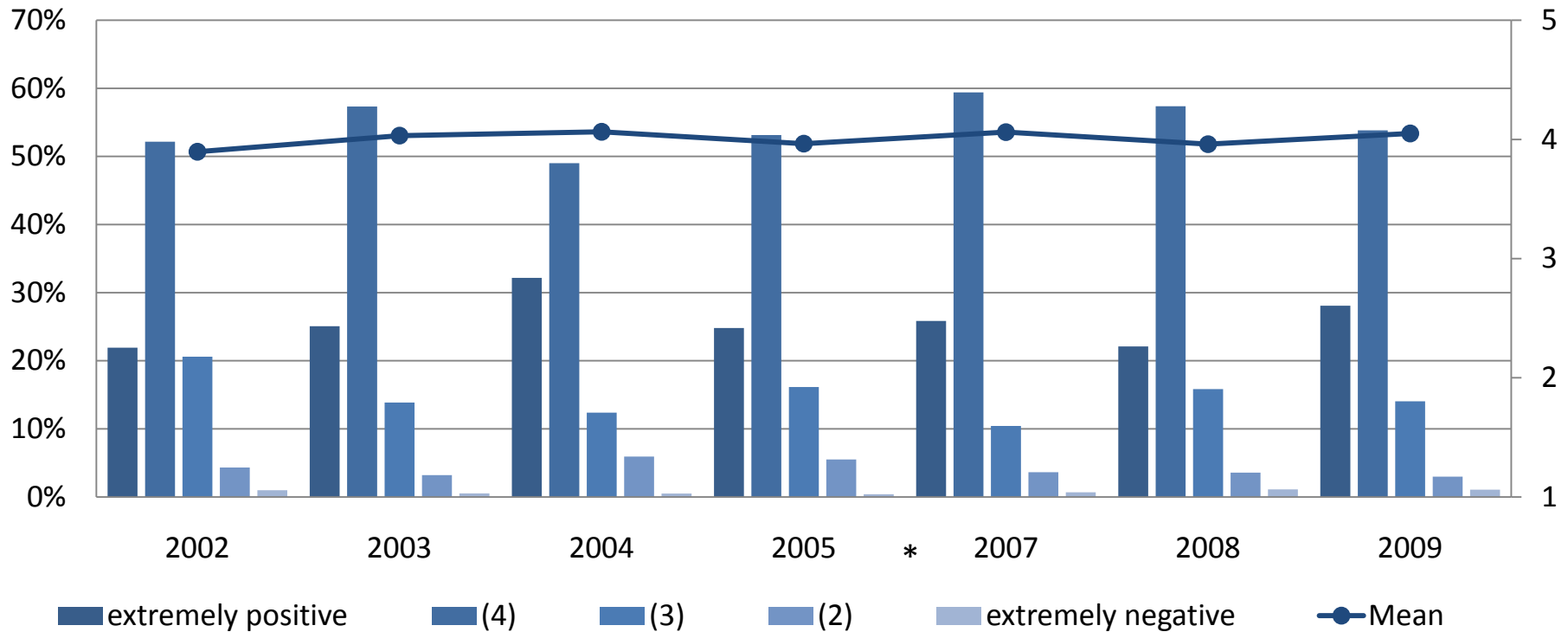
How would you rate the...Quality of instruction by graduate teaching assistants  
(overall mean = 3.24)



\* 2006 data not available

Figure 15

What is your overall ranking of your MSU education?  
(overall mean = 4.00)



\* 2006 data not available