

# MONTANA STATE UNIVERSITY

BOZEMAN • MONTANA

## FACTS AND STATS



The only university in the country with Carnegie® classifications for very high research activity, a very high undergraduate enrollment profile and a commitment to community engagement

Among the top 3 percent of colleges and universities in the nation for research expenditures

Unparalleled university access to outdoor adventure and discovery

### Basic facts { Fall 2019 }

**ENROLLMENT**  
16,766

**UNDERGRAD**  
14,817

**GRADUATE**  
1,949

**FALL 2019 FRESHMEN CLASS ENROLLMENT**  
3,329

Average HS GPA **3.57**

Average ACT **25**

Average SAT **1234**

**ACADEMIC PROGRAMS**  
250+

options, including majors, options within majors, minors & special programs

**BOZEMAN AREA FACTS**

Population  
107,810

Average Snowfall  
86"

#### TOP TEN HOME STATES

Montana	7,824	Oregon	427
Washington	1,324	Idaho	381
Colorado	1,213	Alaska	316
California	1,127	Illinois	222
Minnesota	543	Wyoming	212

#### TOP TEN MONTANA HOME COUNTIES

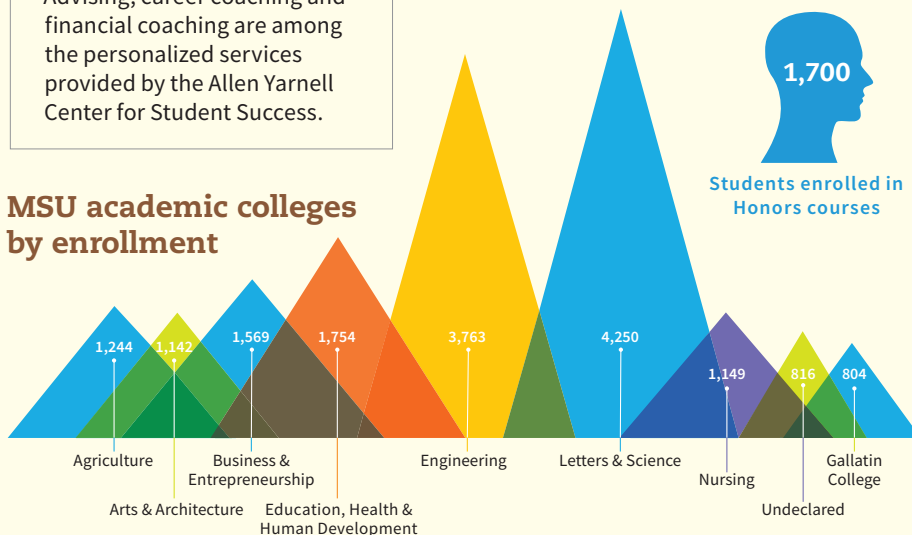
Gallatin	2,430	Cascade	554
Yellowstone	1,084	Park	337
Flathead	650	Ravalli	230
Lewis & Clark	599	Silver Bow	119
Missoula	565	Jefferson	113

498 INTERNATIONAL STUDENTS representing 74 countries

### Student support

Advising, career coaching and financial coaching are among the personalized services provided by the Allen Yarnell Center for Student Success.

### MSU academic colleges by enrollment



### Top scholars

In the past ten years, MSU students have received the following: **3 Rhodes Scholarships** • **7 Truman Scholarships** • **37 National Science Foundation Graduate Research Fellowships** • **8 Udall Scholarships** • **8 Boren Scholarships** • **2 Gates-Cambridge Scholarships** (including the first Native American student to receive this award) • **23 Fulbright Grants** and a Marshall, Mitchell, Schwarzman Scholarship and the Pearson Prize for Higher Education.

**MSU students earned 27 Goldwater Scholarships during the past ten years.** Montana State University is tied for 9th nationally for number of Goldwater Scholarship recipients. As of 2019, 74 MSU students have received the Barry M. Goldwater Scholarship, the nation's premier scholarship for undergraduates studying math, natural sciences and engineering. MSU's rank puts it just above Yale. Other schools at the top of the list include: Harvard, Stanford, CalTech and MIT.

### Leader in research



MSU is the largest research entity in Montana. Research expenditures exceeded \$138.8 million in the past year.

### Successful grads

MSU grads consistently outperform their peers on professional exams and boards, with pass rates that exceed the national average in their respective areas of study.

think outside

## ⊕ Ski areas within an hour of campus

BRIDGER BOWL	20 MINUTES FROM CAMPUS	2,700' VERTICAL DROP	350" ANNUAL SNOWFALL
BIG SKY RESORT	60 MINUTES FROM CAMPUS	4,350' VERTICAL DROP	400+" ANNUAL SNOWFALL



## ⊕ Best place



*Livability.com* ranked Bozeman as one of its Best Places to Live four years in a row, calling the city a “tech-savvy, economically vibrant, highly educated city on the grow” with year-round natural amenities that are hard to beat.

## ⊕ Bozeman trails

**80+ miles**

Bozeman’s ever-expanding Main Street to the Mountains trail system links the city to the surrounding mountains.



**NO. 1 DAY TRIP—89 MILES**

**FUN FACTS**



### THREE BIG RIVERS

Famous for whitewater adventure, fly fishing, history & Hollywood films

**Gallatin, Madison and Yellowstone rivers**



**MOUNTAIN RANGES VISIBLE FROM BOZEMAN**  
and highest visible peak

Big Belt Mountains	9,504'
Bridger Range	9,665'
Gallatin Range	10,154'
Spanish Peaks	11,015'
Tobacco Root Mts.	10,604'

## ⊕ Intramurals

**30 sports & events**

Intramurals at MSU are open to any student and include volleyball, soccer, e-sports, climbing, kickball, tennis, Texas Hold ‘Em, basketball, ultimate frisbee and many more.

## ⊕ Student clubs

**250+ clubs & organizations**

MSU students can participate in clubs, programs, events, services and activities such as student government, student organizations and community service.



### BOBCAT TEAMS

- Alpine Skiing ■■
- Basketball ■■
- Cross Country ■■
- Football ●
- Golf ■
- Nordic Skiing ■■
- Rodeo (NIRA) ■■
- Spirit Squad ■■
- Tennis ■■
- Track & Field ■■
- Volleyball ■

● Men’s ■ Women’s

## ⊕ Direct flights

Direct flights from Bozeman Yellowstone International Airport, Montana’s top airport

- Atlanta
- Chicago
- Dallas/Ft. Worth
- Denver
- Detroit
- Houston
- Las Vegas
- Long Beach
- Los Angeles
- Minneapolis/St. Paul
- Newark
- New York
- Philadelphia
- Phoenix
- Portland
- Salt Lake City
- San Francisco
- Seattle

— **NO. 1** —  
IN MONTANA  
MONTANA’S LARGEST AIRPORT WITH SEVEN AIRLINES



Experience a 360° tour of our beautiful campus and building interiors. [montana.edu/tour](http://montana.edu/tour)

Visit [montana.edu](http://montana.edu) to learn more about MSU.