



WHAT
WOULD
YOU DO?



Join a cultural club

or

Join a club sport



Paint the M

or

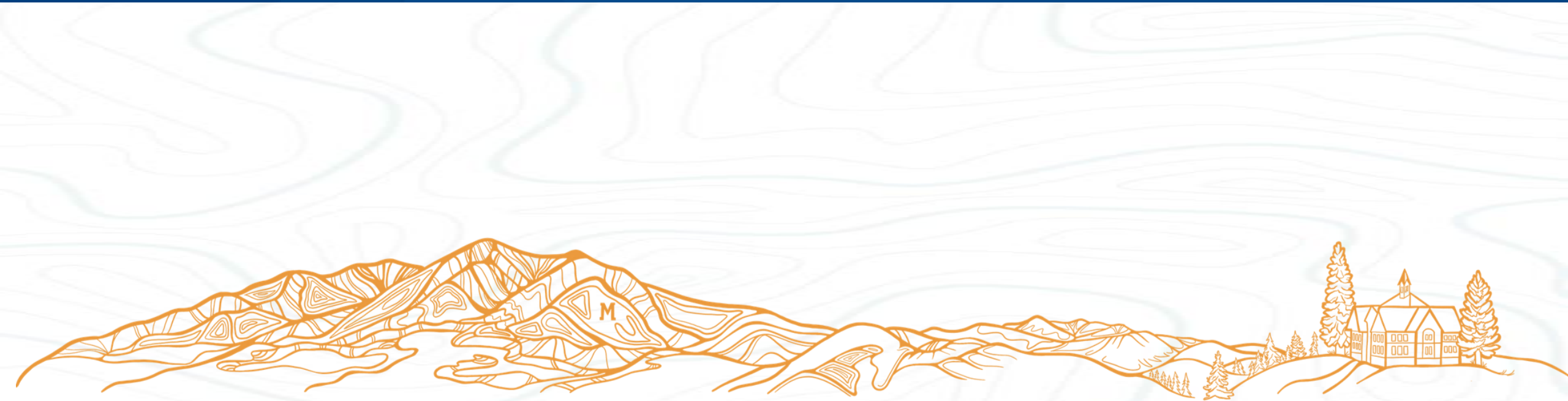
Light the M



Attend Music on the Mall or An art show



You can have it all!



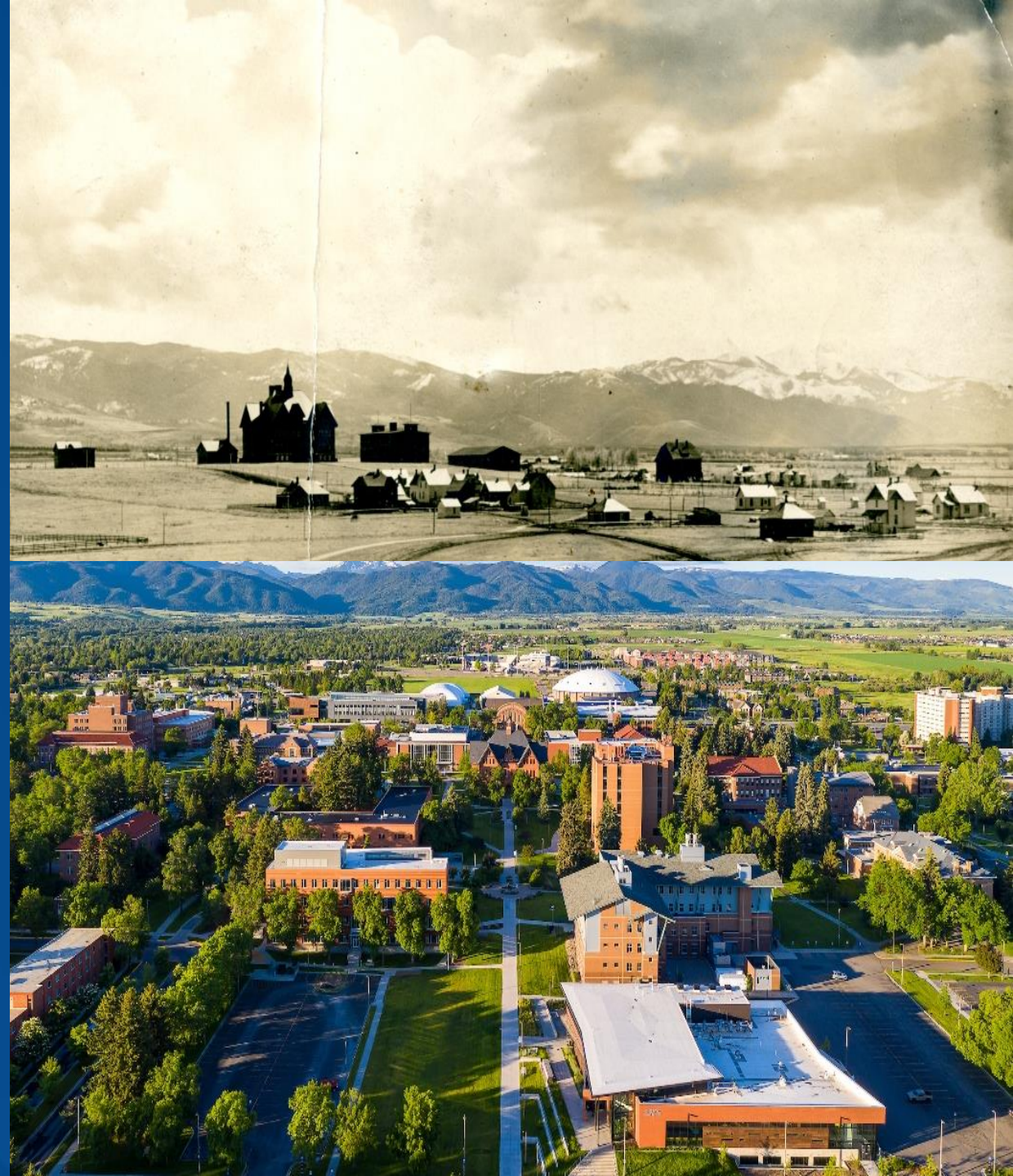


Check out our founding
charter in a 1911 edition of
The Exponent student
newspaper

Senators for each academic college, executives,
justices, and student staff

Student fees fund programs, events, and services

A seat at the table for key university decisions



Lenny

Finn



Thank you, Office of Student Engagement!



MOLLY ASST. DIRECTOR
LAMMERS

CHRIS
EVENTS **PRUDEN**

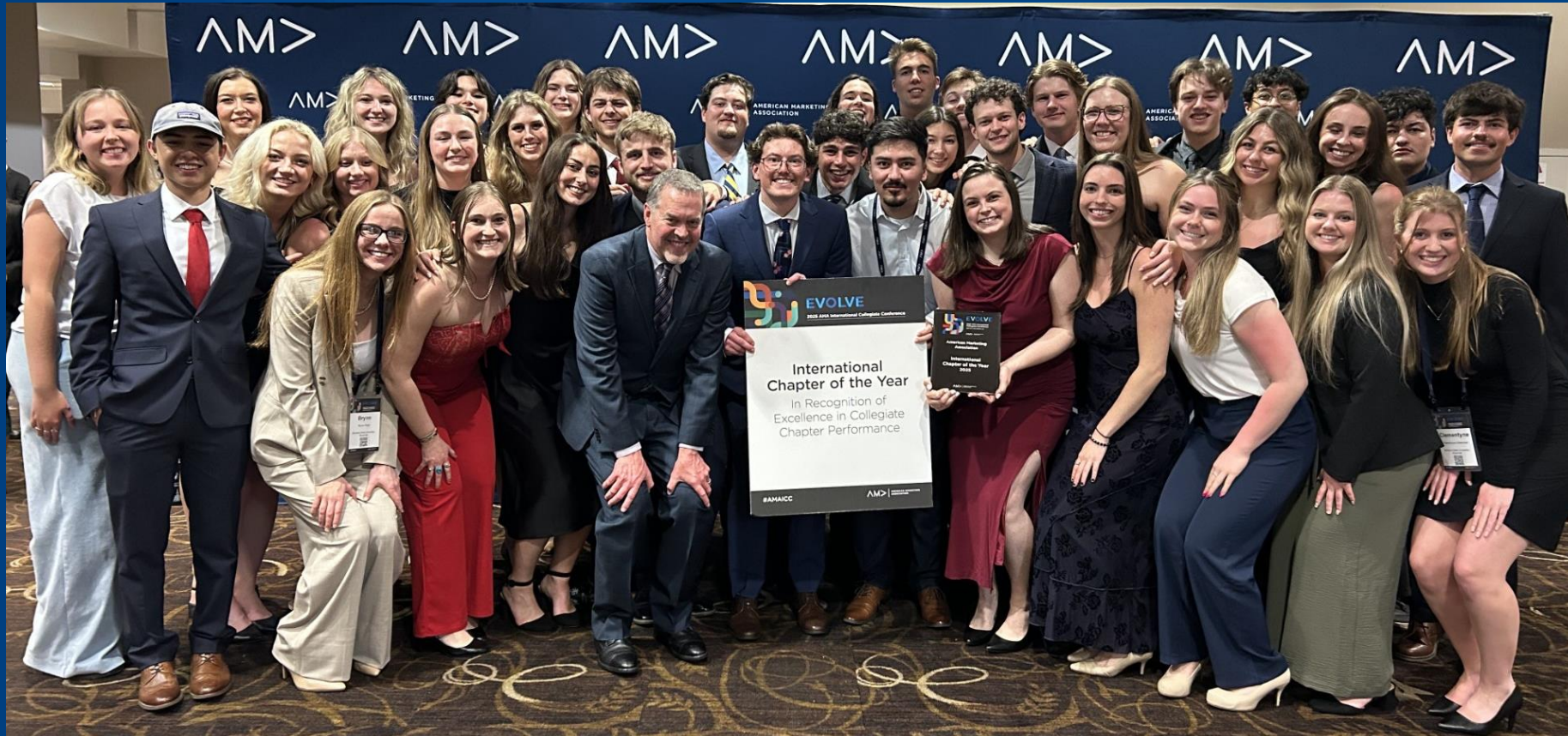
KIM COMMUNITY
CLEARY ENGAGEMENT

**Catapalooza
MSU Debut**

**Partnership
on major
ASMSU events**

**Check out their
concert tomorrow 7
– 9 PM at the SWC!**

American Marketing Association



Named AMA chapter of the year in 2025 out of 330+ chapters

Men's Lacrosse Club



2024 RMLC Champions

Engineers Without Borders



Engineered 15 water wells, 13 latrines, two rainwater catchment systems, an eyeglasses clinic, a water distribution system, a library and a biogas latrine



Water well installed with help from MSU Engineers Without Borders

How do I start a club?

1. Define a mission
2. Find 7 members and a faculty advisor
3. Register!





Student Wellness Center

- recreation center
- climbing wall
- pool
- bike and ski shop
- health services
- food pantry



Outdoor Recreation Center

Available rentals

- Rafts
- Kayaks
- Paddleboards
- Float tubes
- Bikes
- Camping gear
- Climbing gear
- Fishing gear



The Streamline Bus



Take the Streamline Bus to

- Downtown Bozeman
- Walmart
- The Fairgrounds
- Belgrade

CatTracks and CatCab

CatTracks provides transportation from outlying parking lots to the center of campus



Need a safe ride home on a weekend?
Try out our new CatCab program!

Student Services



Appointments in the ASMSU office!

**Landlord-tenant disputes, MIPs,
criminal issues, and more**



Off-Campus Student Life

**assistance with off-campus housing, signing
agreements, transportation**



n Servheen

urship to Advance Sustainable Development



RM



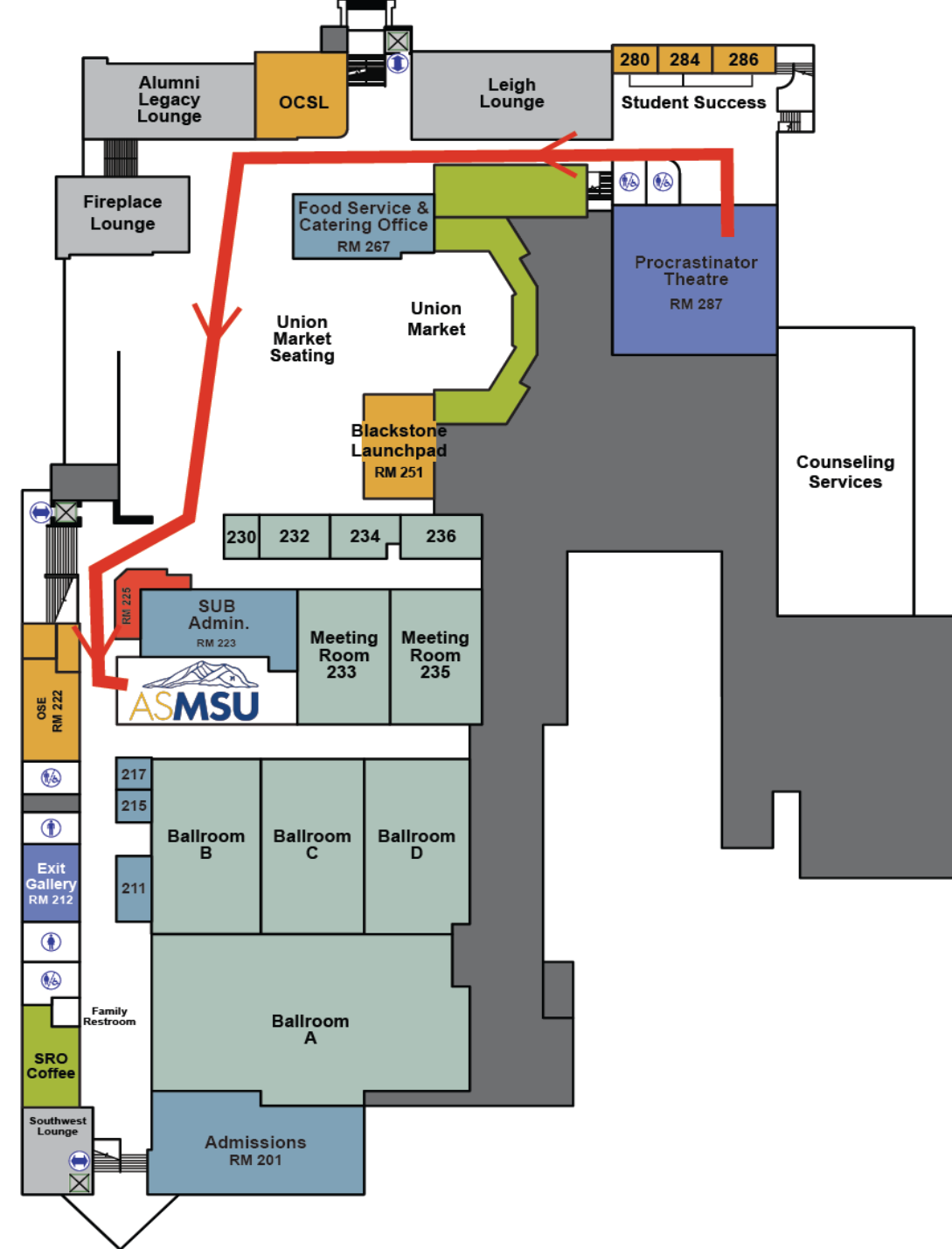
YOU could make the Rail Jam happen!

By working with us, you can...

- Plan campus events and programs
- Get internship credit
- Develop leadership skills
- Work with other motivated students



Come visit us in the SUB!



Reach out to your senators!

montana.edu/asmsu



Follow @asmsu.bobcats



