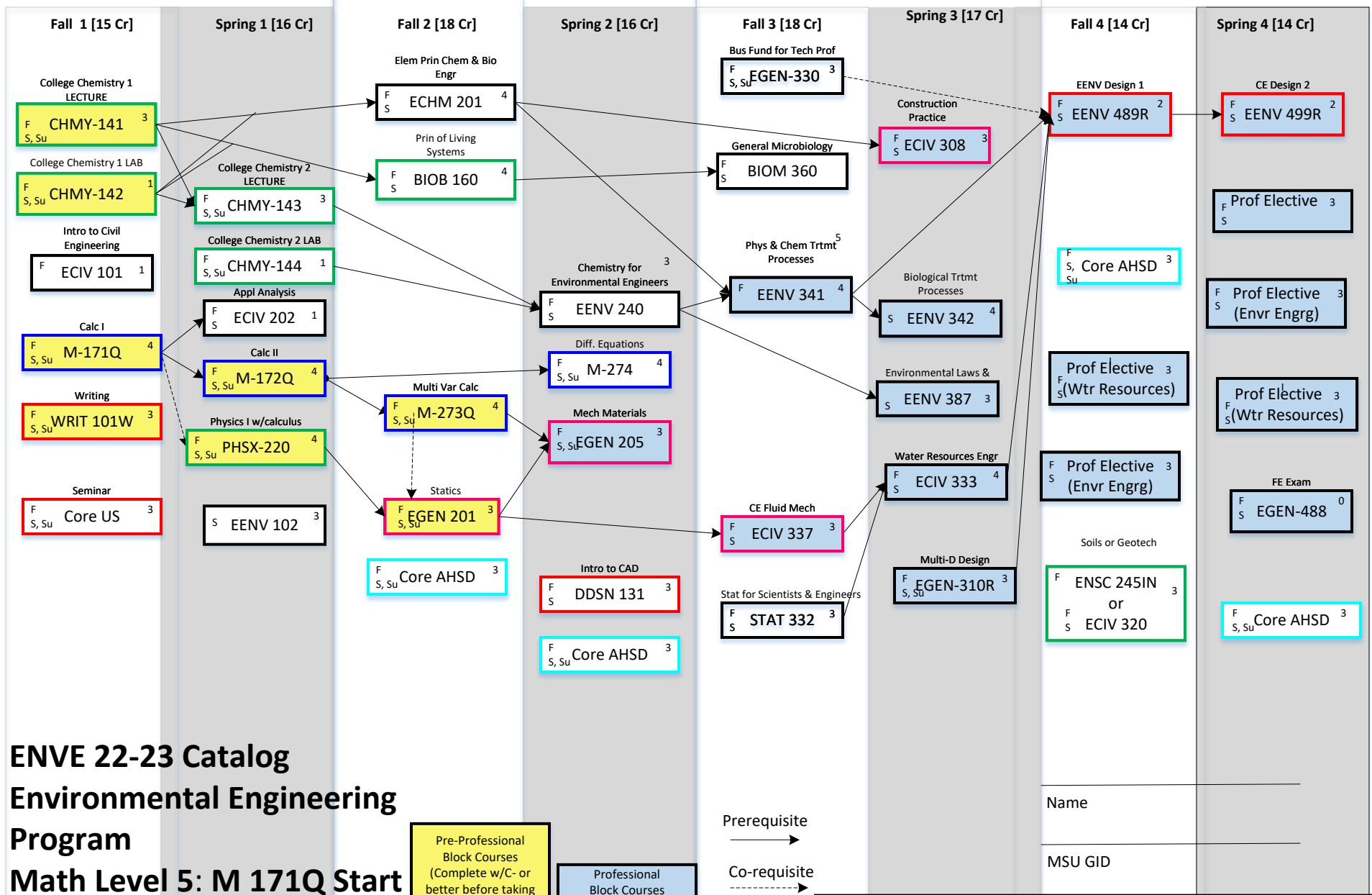


1st Year

2nd Year

3rd Year

4th Year



**ENVE 22-23 Catalog
Environmental Engineering
Program
Math Level 5: M 171Q Start**

WRIT 101W exempt? Substitute WRIT 201 or WRIT 221 or HONR 202

PROFESSIONAL ELECTIVE COURSES – SEE BACK OF FLOWCHART

Pre-Professional Block Courses (Complete w/C- or better before taking Prof. Block Courses)

Choose one course from the following CORE 2.0 topics:
 A = IA/RA (Inquiry Arts/Research Arts)
 H = IH (Inquiry Humanities)
 S = IS (Inquiry Social Sciences)
 D = D (Diversity)

- Mechanics Courses
- Math Courses
- Science Content

2022-23
For planning purposes: The MSU catalog displays official degree and prerequisite requirements. Some courses from prior catalogs have been discontinued or replaced. It is recommended that students on 2012-2021 catalogs follow this flowchart to complete their degree requirements.)

Name _____

MSU GID _____

