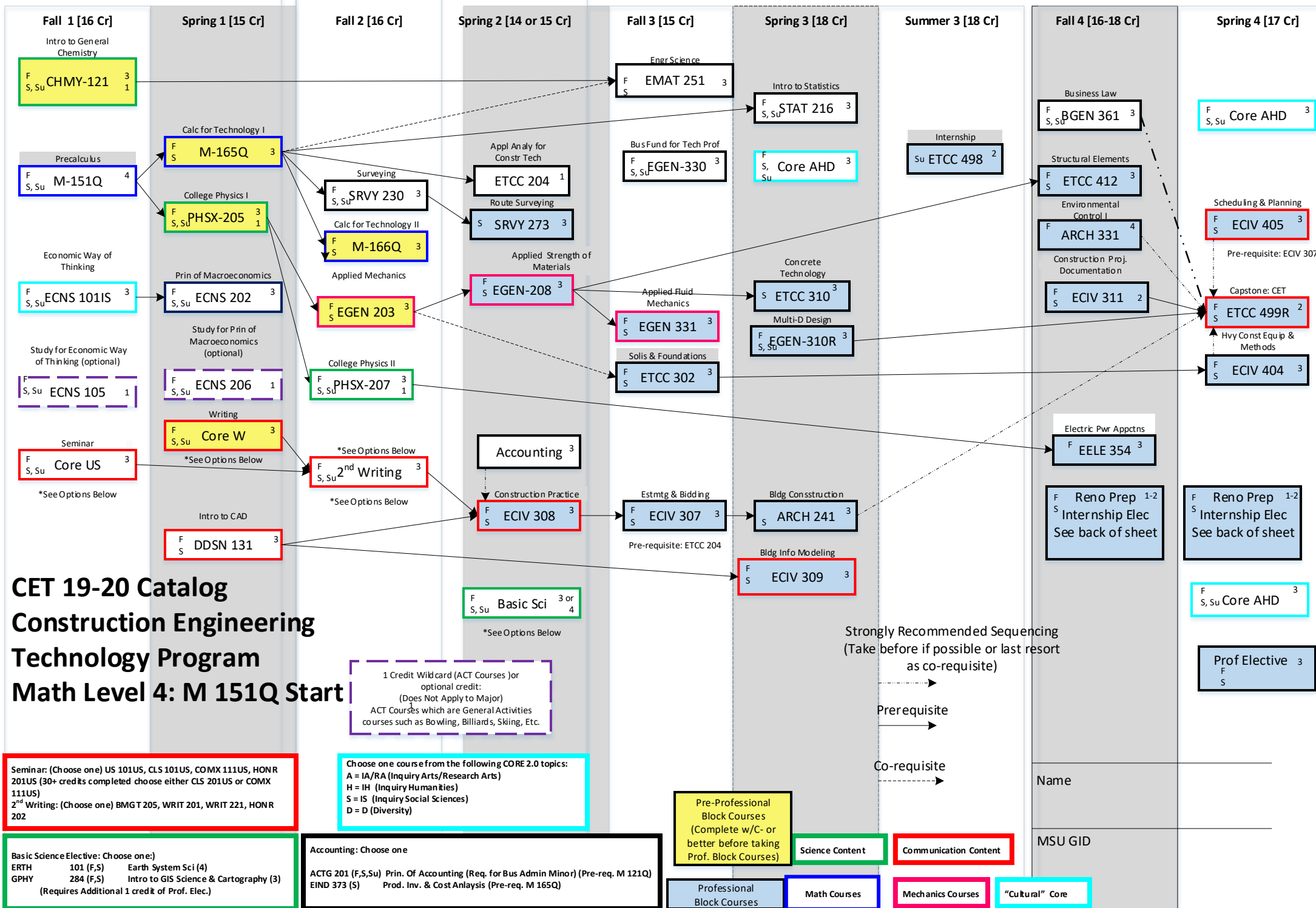


1<sup>st</sup> Year

2<sup>nd</sup> Year

3<sup>rd</sup> Year

4<sup>th</sup> Year



**CET 19-20 Catalog  
Construction Engineering  
Technology Program  
Math Level 4: M 151Q Start**

**Seminar:** (Choose one) US 101US, CLS 101US, COMX 111US, HONR 201US (30+ credits completed choose either CLS 201US or COMX 111US)  
**2<sup>nd</sup> Writing:** (Choose one) BMGT 205, WRIT 201, WRIT 221, HONR 202

**Basic Science Elective: Choose one(s):**  
 ERTH 101 (F,S) Earth System Sci (4)  
 GPHY 284 (F,S) Intro to GIS Science & Cartography (3)  
 (Requires Additional 1 credit of Prof. Elec.)

**Accounting: Choose one**  
 ACTG 201 (F,S,Su) Prin. Of Accounting (Req. for Bus Admin Minor) (Pre-req. M 121Q)  
 EIND 373 (S) Prod. Inv. & Cost Analysis (Pre-req. M 165Q)

1 Credit Wild card (ACT Courses) or optional credit: (Does Not Apply to Major)  
 ACT Courses which are General Activities courses such as Bowling, Billiards, Skiing, Etc.

Choose one course from the following CORE 2.0 topics:  
 A = IA/RA (Inquiry Arts/Research Arts)  
 H = IH (Inquiry Humanities)  
 S = IS (Inquiry Social Sciences)  
 D = D (Diversity)

Strongly Recommended Sequencing (Take before if possible or last resort as co-requisite)

Prerequisite

Co-requisite

Name

MSU GID

Pre-Professional Block Courses (Complete w/C- or better before taking Prof. Block Courses)

Science Content

Communication Content

Professional Block Courses

Math Courses

Mechanics Courses

"Cultural" Core