

Cultivating LGBTQ+ Affirming Spaces within 4-H



Maru Gonzalez, EdD
Assistant Professor & Youth Development Specialist
North Carolina State University

Agenda

- ★ Welcome
- ★ Why is this work important?
- ★ LGBTQ+ Youth Overview
- ★ Best Practices
- ★ Case Scenarios
- ★ Q&A



The terms *lesbian*, *gay*, and *bisexual* refer to sexual or affectional orientation while *transgender* relates to gender identity and expression.

Transgender or **trans*** describes an individual who identifies with a gender different from the one assigned to them at birth and/or whose gender expression falls outside the male/female gender binary.

Queer is a term that has been re-appropriated by those whose identities challenge gender and sexuality norms

Questioning refers to an individual who is in the process of exploring their sexual orientation or gender identity.

**Why is learning about
fostering inclusivity &
belonging for and with
LGBTQ+ youth important?**

Professional Statements of Obligation

- ★ *4-H Council*
- ★ *Cooperative Extension*
- ★ *National Council on Family Relations*
- ★ *American School Counselor Association*
- ★ *National Association of School Psychologists*
- ★ *School Social Workers of America*
- ★ *National Association of School Boards*
- ★ *National Education Association*

“N.C. Cooperative Extension (NCCE) and our respective partner institutions are committed to diversity, equal opportunity and non-discrimination. This commitment extends to all faculty and staff employment decisions as well as providing **open and inclusive access to every North Carolinian seeking to participate in our programs and activities.**

...**we do not tolerate discrimination, harassment, or retaliation** on the basis of race, color, national origin, religion, sex, age, veteran status, **gender identity, sexual orientation,** genetic information, or disability in employment or our programs and activities.”

“Together, Cooperative Extension and National 4-H Council affirm our **shared values of inclusion for all youth in 4-H programs**...Cooperative Extension institutions have been **unwavering in their commitment to serving all youth, including LGBTQ+ young people**. 4-H programs in every state and county in America are governed by state laws regarding non-discrimination in public education as well as land grant university policies regarding diversity and inclusiveness in its many forms.”

- Jennifer Sirangelo, President & CEO, National 4-H Council

SCHOOLS ARE **UNSAFE** AND UNWELCOMING FOR THE MAJORITY OF LGBT STUDENTS.



65%

heard homophobic remarks like “fag” or “dyke” frequently or often

Heard homophobic remarks frequently or often



30%

missed at least one day of school in the past month because they felt unsafe or uncomfortable

Missed at least one day of school



85%

were verbally harassed in the past year

Verbally harassed at school in the past year

LEARN MORE IN GLSEN'S LATEST NATIONAL SCHOOL CLIMATE SURVEY AT GLSEN.ORG/NSCS





HOMELESS YOUTH POPULATION



GENERAL YOUTH POPULATION

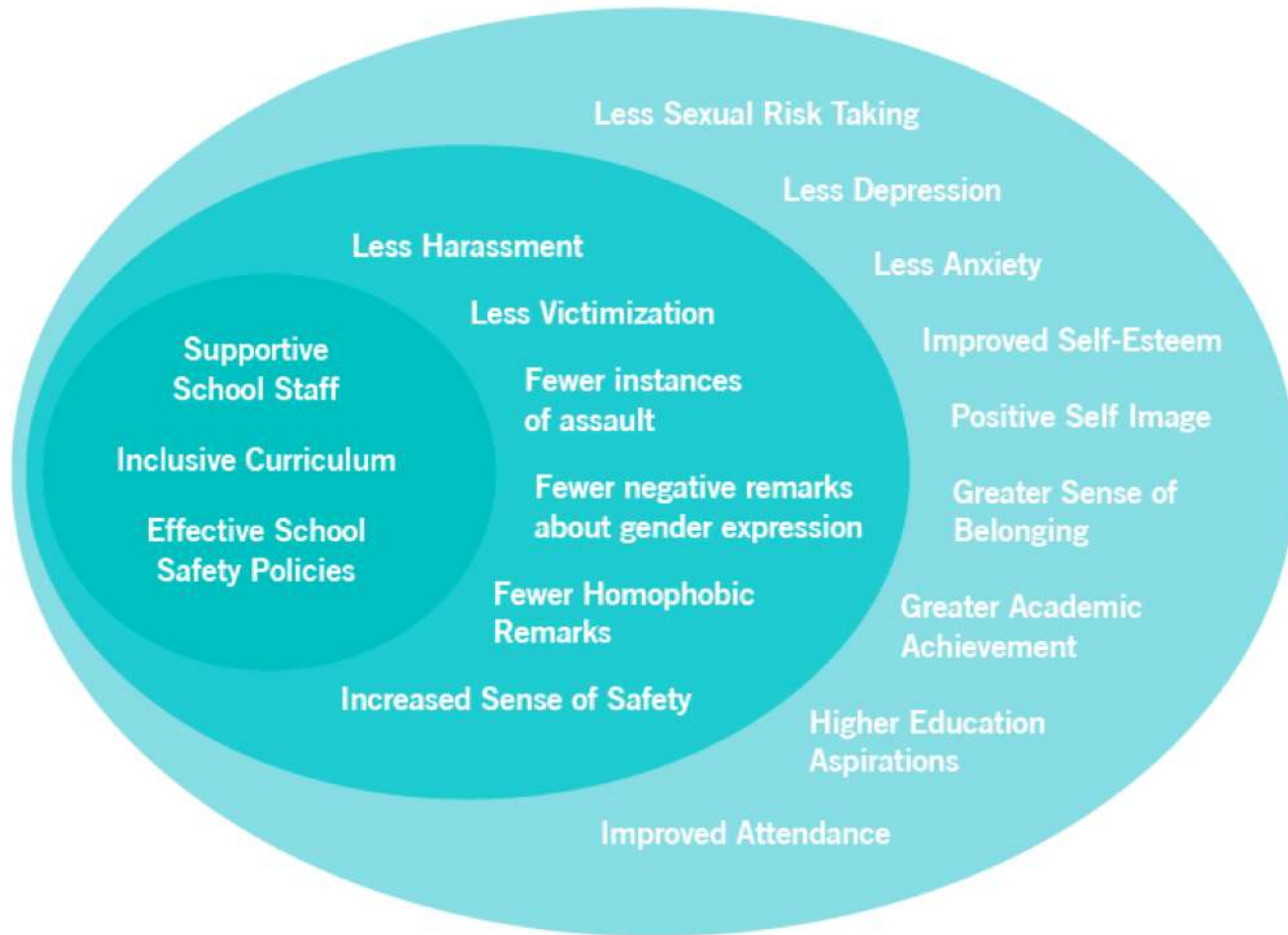




ALL youth want to feel:

- Liked
- Respected
- Supported
- Included
- Understood





THE 5 C'S OF POSITIVE YOUTH DEVELOPMENT



* In his 2007 book "The Good Teen," Richard M. Lerner included this additional outcome

LGBTQ+ Youth Overview

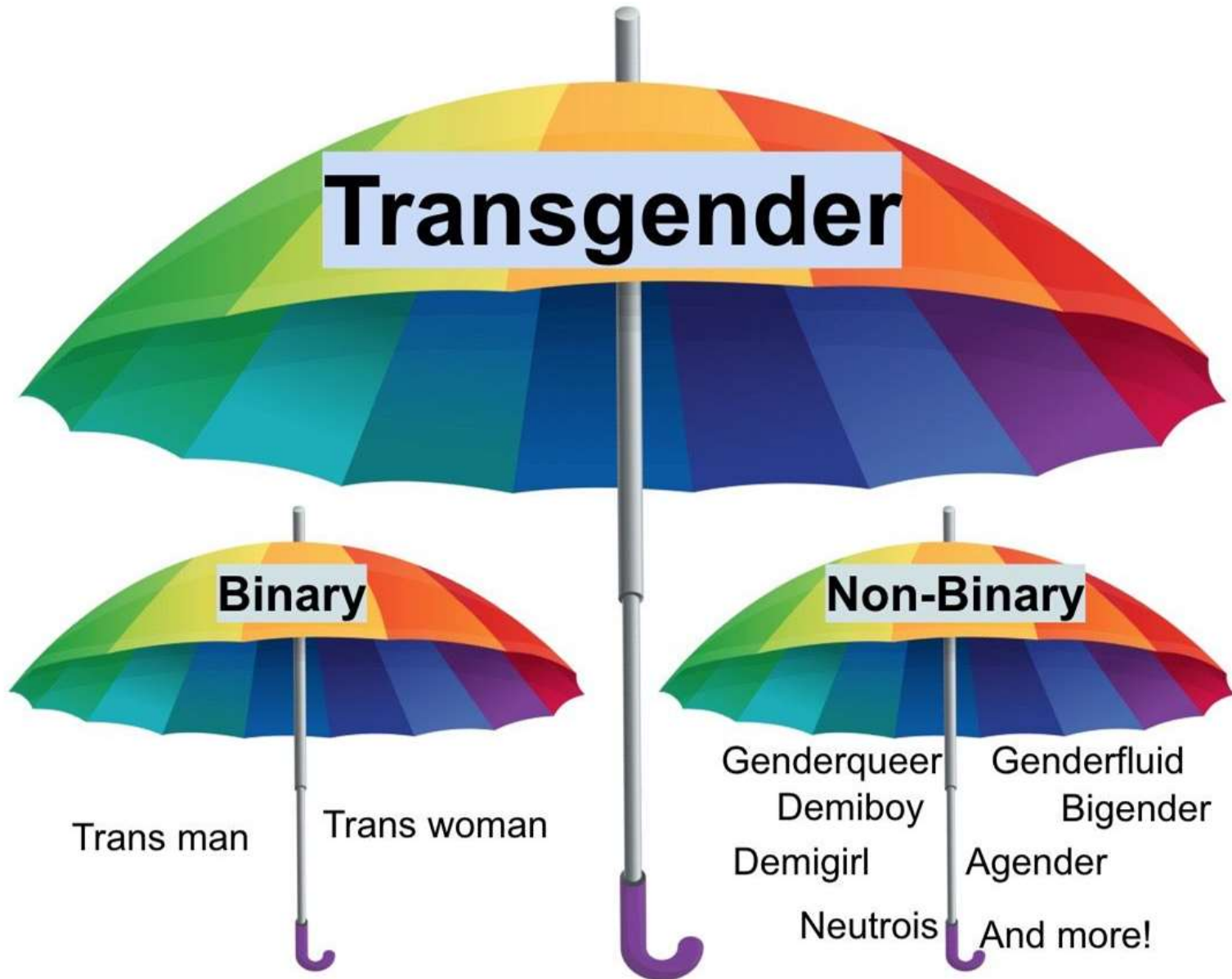


The terms *lesbian*, *gay*, and *bisexual* refer to sexual or affectional orientation while *transgender* relates to gender identity and expression.

Transgender or **trans*** describes an individual who identifies with a gender different from the one assigned to them at birth and/or whose gender expression falls outside the male/female gender binary.

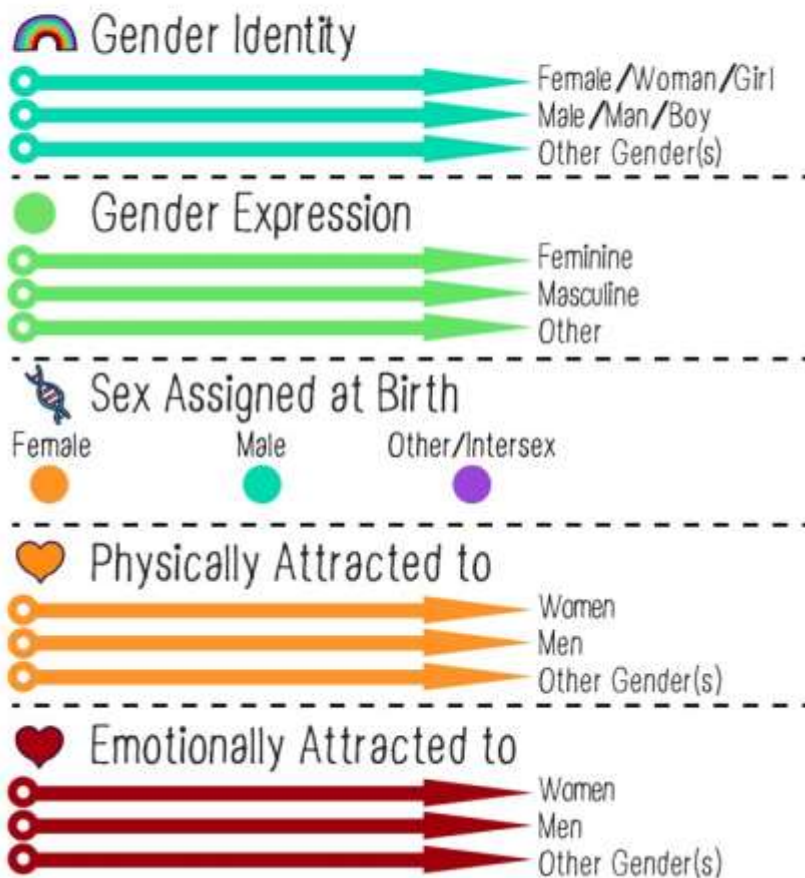
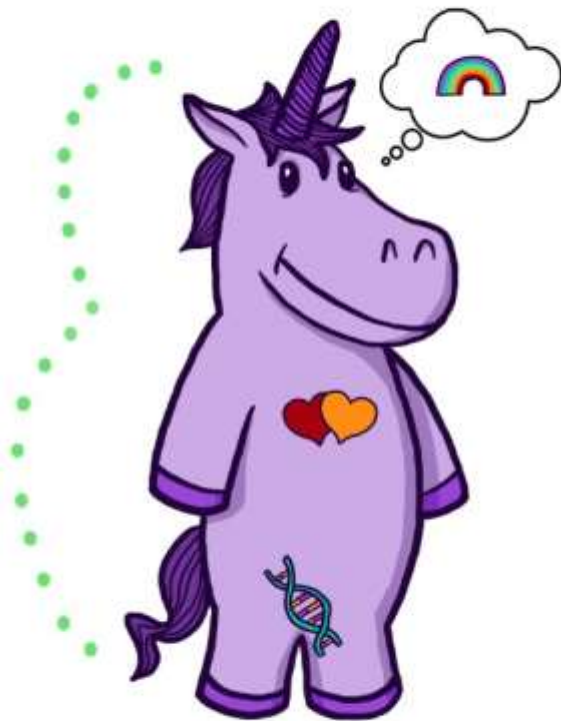
Queer is a term that has been re-appropriated by those whose identities challenge gender and sexuality norms

Questioning refers to an individual who is in the process of exploring their sexual orientation or gender identity.



The Gender Unicorn

Graphic by:
TSER
Trans Student Educational Resources



To learn more, go to:
www.transstudent.org/gender

Design by Landyn Pan and Anna Moore

Transgender is an Adjective

- ★ Use: *transgender people; a transgender person*
- ★ Avoid: *transgenders; transgendered*

Gender-Affirming Language

- ★ Refer to trans and gender nonconforming youth by their chosen name.
- ★ Use pronouns that affirm youth's gender identity.
- ★ Model the use of pronouns
- ★ Ensure paperwork is inclusive of all genders
- ★ Do not make assumptions about a young person's gender and/or sexual orientation.
- ★ Refrain from using terms such as *tranny* and *transvestite* unless the student self-identifies as such.

Using a transgender youth's chosen name at work, at school, with friends, and at home:



reduces
depression
symptoms by

71%



reduces
thoughts of
suicide by

34%



reduces
suicide
attempts by

65%

Russell, S., Pollitt, A., Li, G., & Grossman, A. (2018). Chosen name use is linked to reduced depressive symptoms, suicidal ideation, and suicidal behavior among transgender youth. *Journal of Adolescent Health, 63*(4), 503-505. doi:10.1016/j.jadohealth.2018.02.003

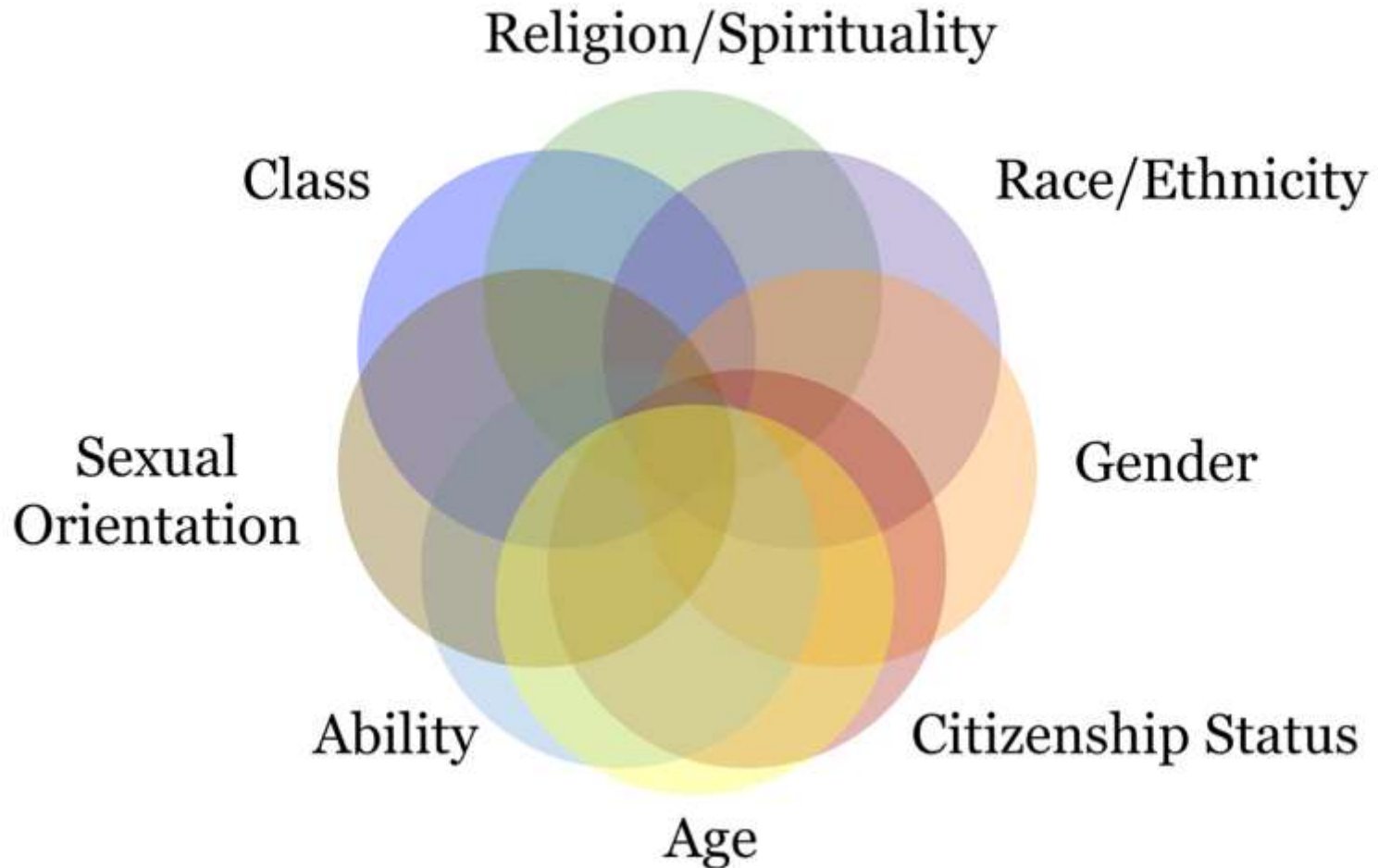
Best Practices for Supporting LGBTQ+ Youth



Assess Your Biases

- ★ Take stock of your personal biases
- ★ Seek opportunities for personal and professional development
 - Uphold ethical standards related to privacy & confidentiality

Consider Intersecting Identities



Know Your Audience



Georgia school district reverses transgender-friendly bathroom policy after death threats

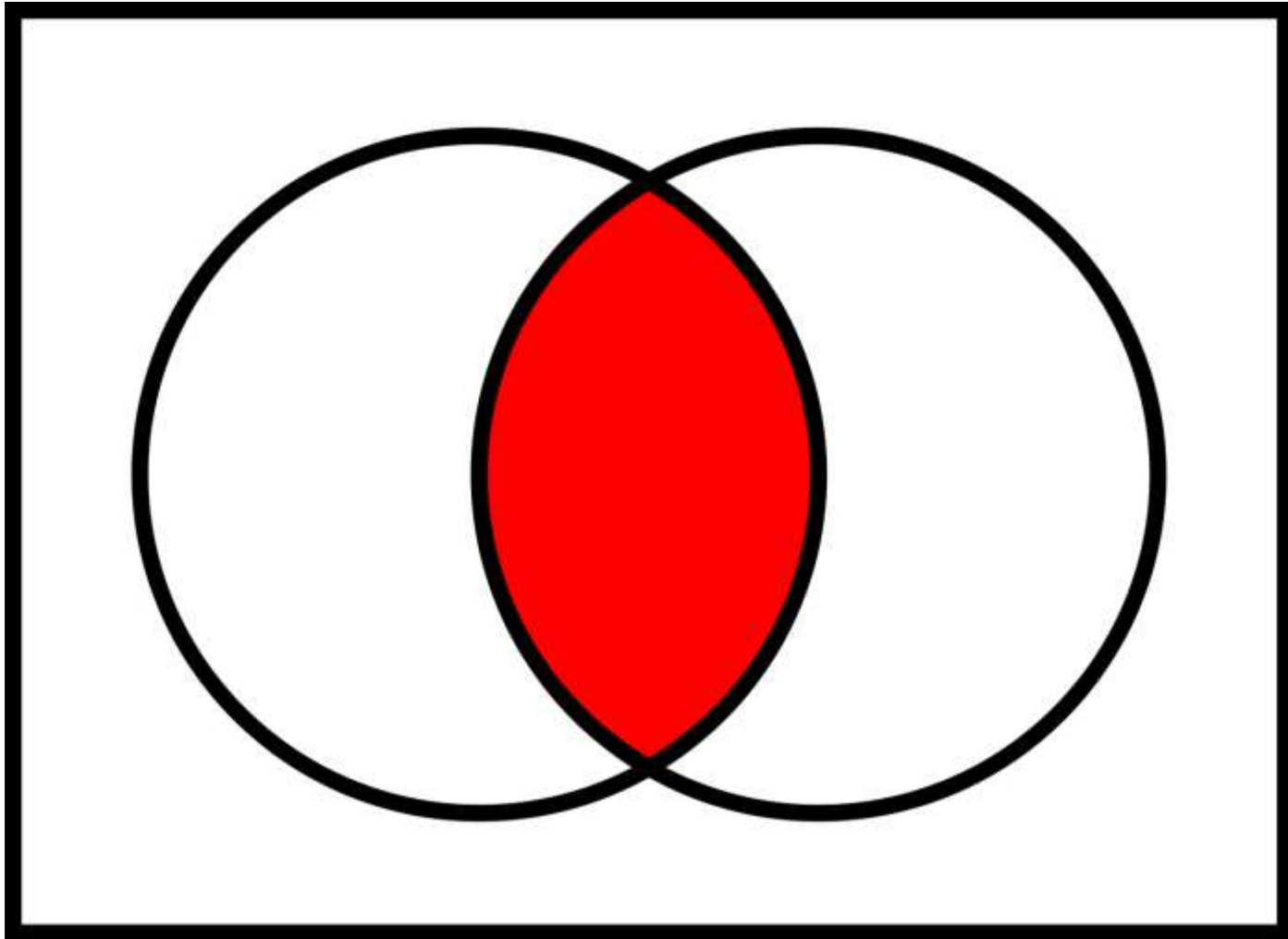


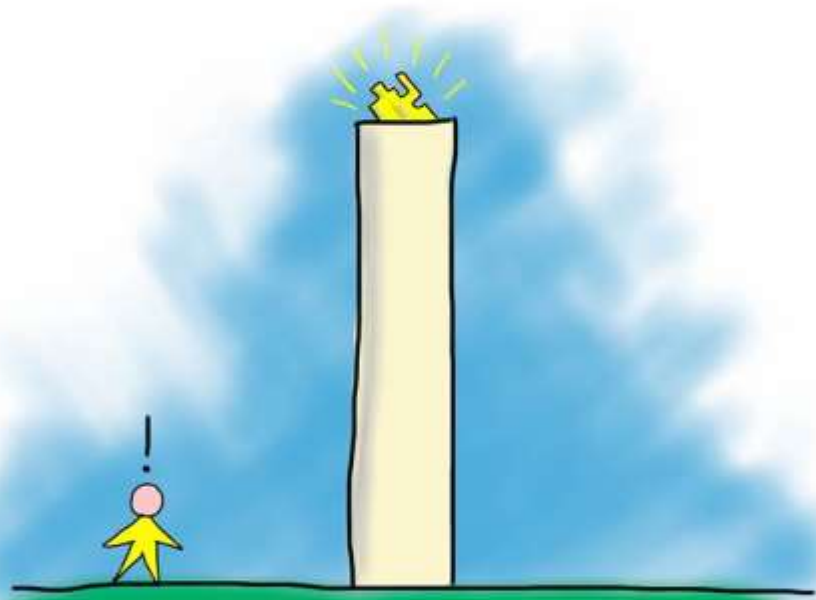
By [Madeline Holcombe](#), CNN

Updated 3:06 AM ET, Thu October 17, 2019

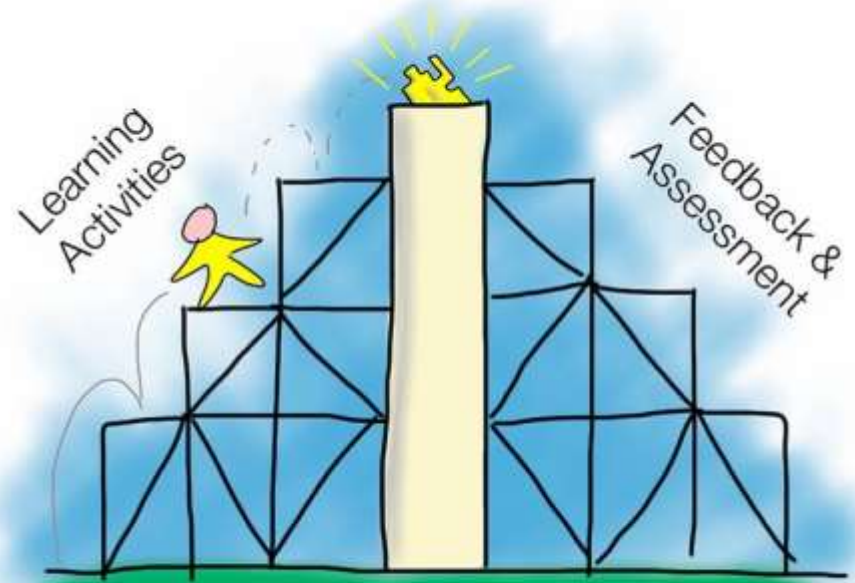


The school board voted to go back to having transgender students use single-stall gender neutral bathrooms.





Learning Outcome



© Gavan P.L. Watson, some rights reserved. 

Representation Matters



- ★ What messages are your spaces sending around norms of gender, sexual orientation and families?
- ★ What could they say?

“When someone with the authority of a teacher describes the world and you are not in it, there is a moment of psychic disequilibrium, as if you looked into a mirror and saw nothing.”

— ADRIENNE RICH, AMERICAN POET

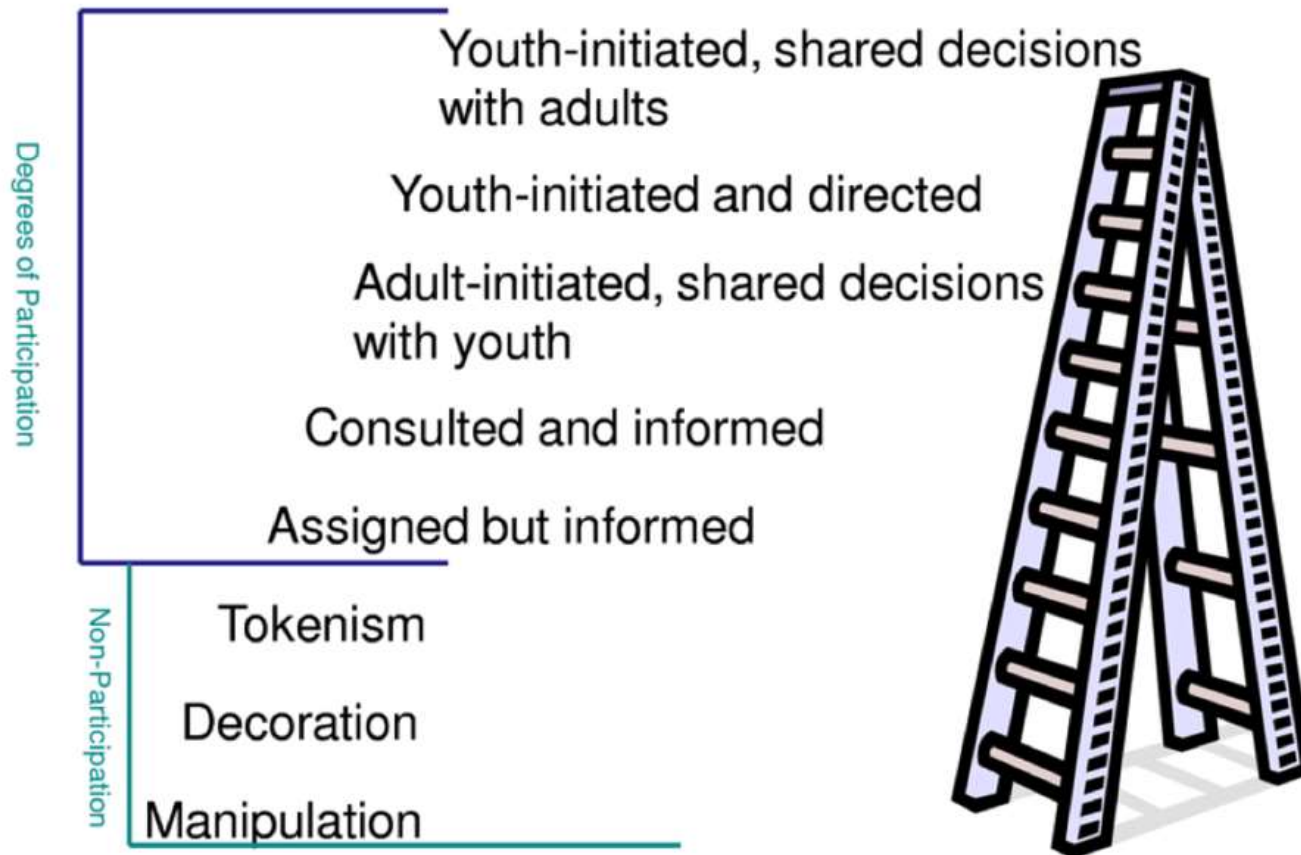
Use Data!

I 
DATA

Value & Include Youth Voices



Ladder of Youth Participation



Adapted from Hart, R. (1992). *Children's Participation from Tokenism to Citizenship*
 Florence: UNICEF Innocenti Research Centre.



[Out at Hillside](#)

#PassTheMicYouth

Search



Events

Listen Now

About Us

#PassTheMicYouth Educator

Toolbox

Blog-Focused Discussion Questions
Podcast-Focused Discussion Questions
Blog #PassTheMicYouth to Your
Classroom/Organization!

Critical Curriculum & Resources

Disability Justice Environmental Justice
Immigration ...

Social Justice Glossary

Submissions

Contact Us



Tweets from
@passthemicyouth

Tweets by
@PassTheMicYouth

PassTheMicYouth
@PassTheMicYouth

Check out our latest #Blogpost
written by 10 year old activists
Lily and Kasi, who created
"Butterfly Effect"
@ElvesImmigration to end child
detention at the U.S. border.
passthemicyouth | csl.ncsu.edu/ |
2018/10/butter...

Butterfly E...
This blog p...
passthemicyouth

Oct 14, 2019

PassTheMicYouth
@PassTheMicYouth

In line for #ComingOutDay.
@TheNewYorker | @BBCNews |

Home » LGBTQ+

LGBTQ+

Unheard Voices



Unheard Voices is a collaboration among the Gay, Lesbian & Straight Education Network (GLSEN), the Anti-Defamation League (ADL), and StoryCorps. Geared toward students in grades 6-12, this project combines oral histories with curriculum to shine a spotlight on LGBTQ issues and experiences.

LGBT-Inclusive Curriculum, GLSEN



From identity, school climate, and allyship to gender diversity and LGBTQ history, GLSEN has LGBTQ-inclusive lessons plans for all grade levels.

Coming Out for Racial Justice, Basic Rights Education Fund



This comprehensive toolkit is equipped with lessons and activities for critically understanding the intersection between racism and heterosexism and transgender oppression. It can be used in the classroom, integrated into school club meetings, or within a youth-serving organization.

Think & Share

What steps can you take to make your programs more LGBTQ+ inclusive and affirming?



Case Scenario Activity



Case Scenario #1

You work in a conservative, rural community. The climate is somewhat hostile toward LGBTQ+ youth and while you want to foster a more affirming environment, you're not sure how. Your county director is supportive yet resistant to change for fear of backlash.

- ★ What do you do?
- ★ With whom do you collaborate?

Case Scenario #2

After a summer camp activity, you instruct youth to clean up after themselves. In response, you overhear a young person complain, “Ugh, that’s so gay.”

