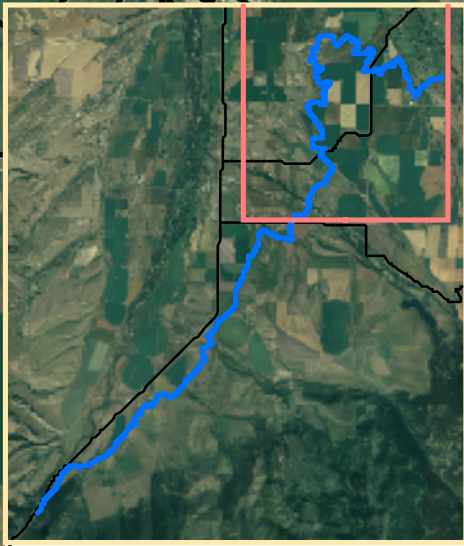
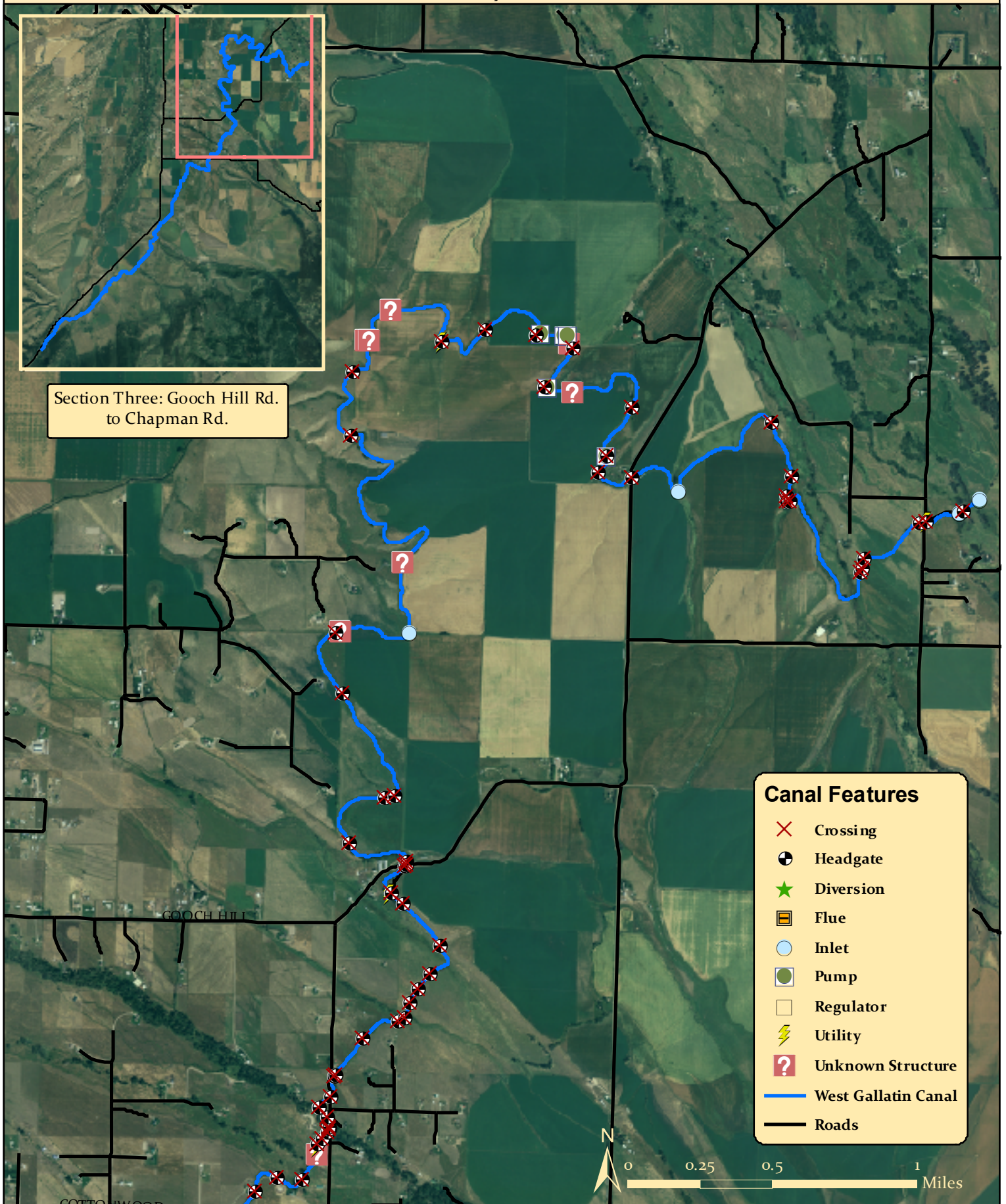


West Gallatin Canal

Gallatin County, Montana



Section Three: Gooch Hill Rd. to Chapman Rd.



Canal Features

- ✕ Crossing
- ⊙ Headgate
- ★ Diversion
- ▣ Flue
- Inlet
- Pump
- Regulator
- ⚡ Utility
- ❓ Unknown Structure
- West Gallatin Canal
- Roads