

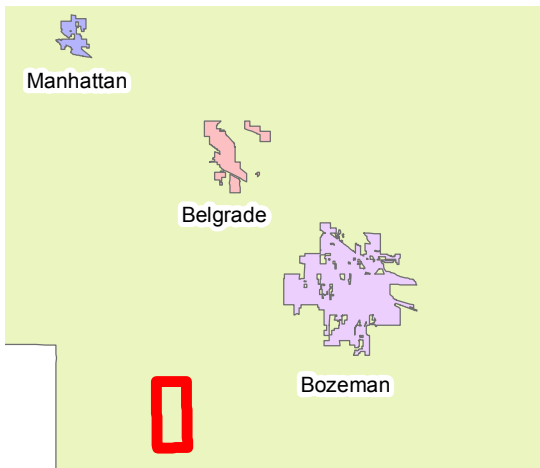
West Noble Ditch

Created by: Josh Goff & Job Brooks

Mapped by: Josh Goff & Job Brooks

Source: MSL Clearinghouse,
Gallatin County GIS

Date: 11/2/2016



Legend

- ⊗ Width Point
- Pump
- ▲ Headgate
- Points of Interest
- Outtake
- * Flume
- ⊗ Diversion
- Crossing
- Canal

