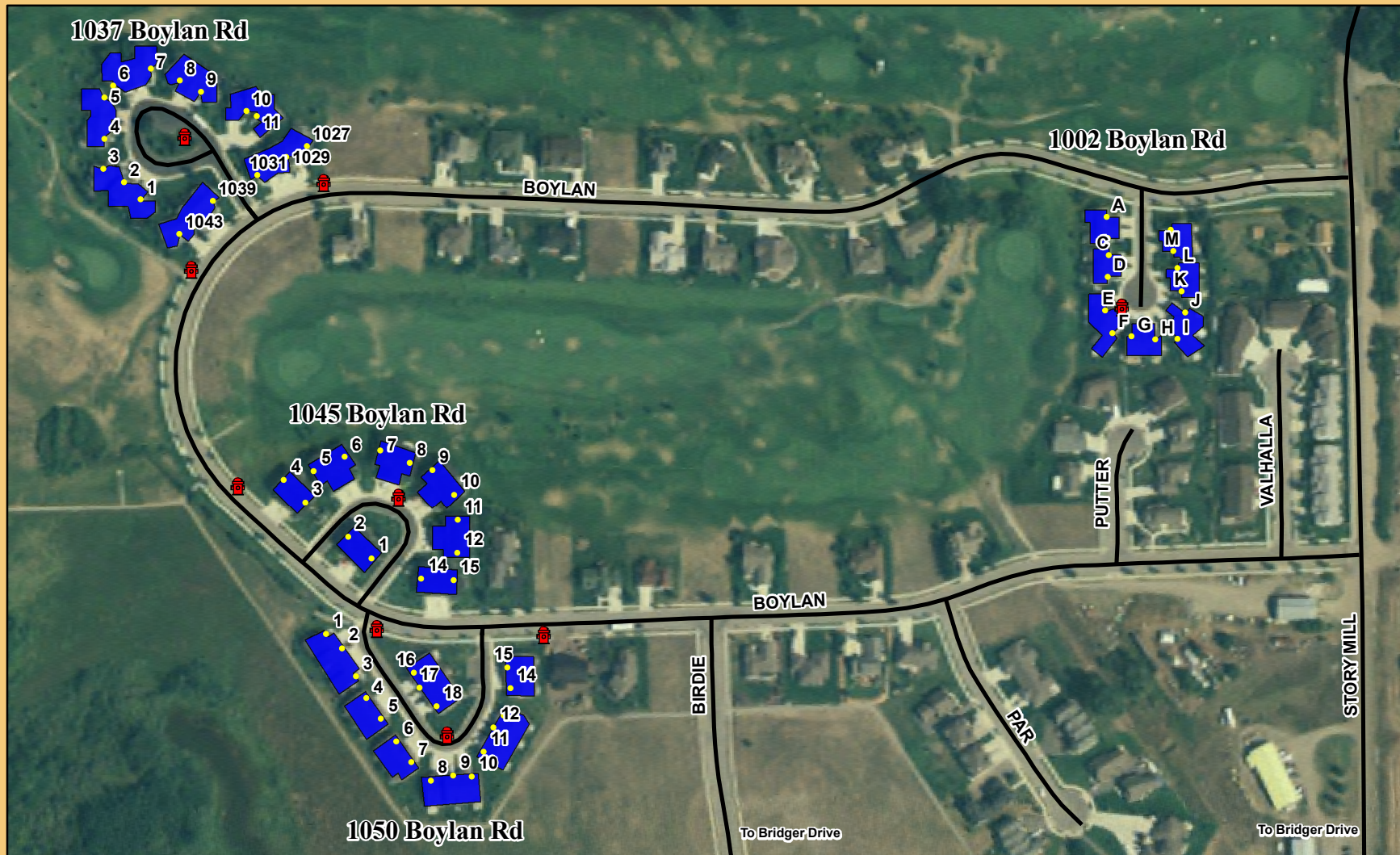


# Enhanced-911 Mapping: Boyland Road



0 0.045 0.09 Miles  
 Scale = 1:3,500



Mapping and Cartography by:  
 Andrew Marsh, Ellis Janssen,  
 Ryan Burns. April 16 2007.

This map was created to help firefighters and first responders quickly locate incident locations at problematic housing developments. Each Boyland Road housing complex will receive its own 8.5 x 11 inch page to improve map readability.

## Emergency Access

-  Entrance
-  Fire Hydrant
-  Roads
-  Building Footprint