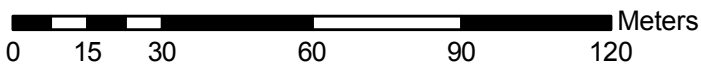
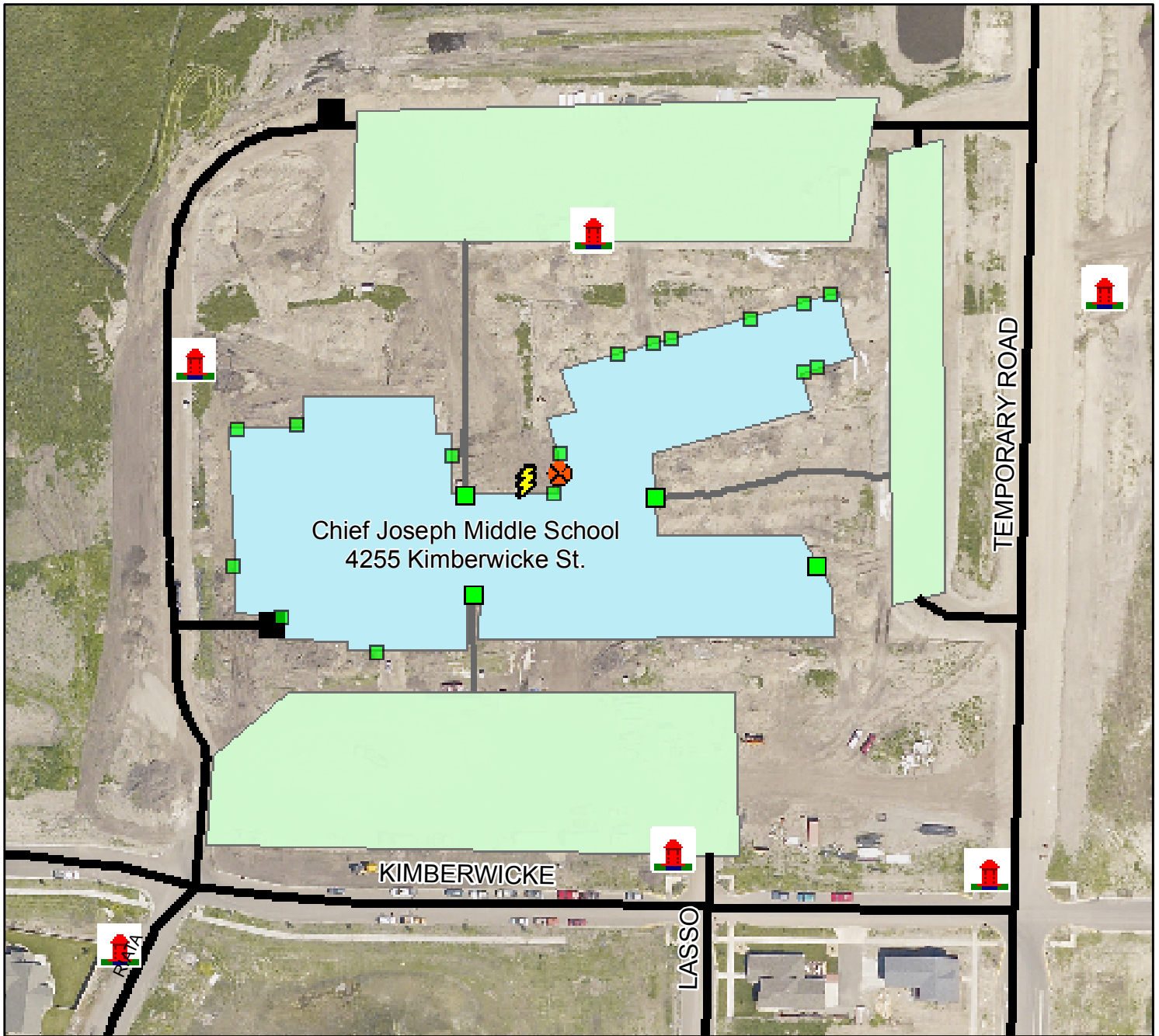


E 9-11 Project: Chief Joseph Middle School

Composed by Zack Kellman and Kyle Taylor



This map was created in partnership with the City of Bozeman Fire and Geographic Information System (GIS) Departments. The maps, carried in fire engines and incorporated into the Enhanced-911 (E-911) computer system, allow firefighters to quickly locate emergency sites, thereby decreasing emergency response time and increasing the chance of saving lives and property.

	Fire Hydrant	
	Gas Shutoff	
	Power Shutoff	
	Main Entrance	
	Entrance	
	Dumpster	
	Sidewalk	
	Access Road	
	Buildings	
	Parking Lot	

Sources:
Diana Cooksey
Gallatin County GIS
Bozeman FD