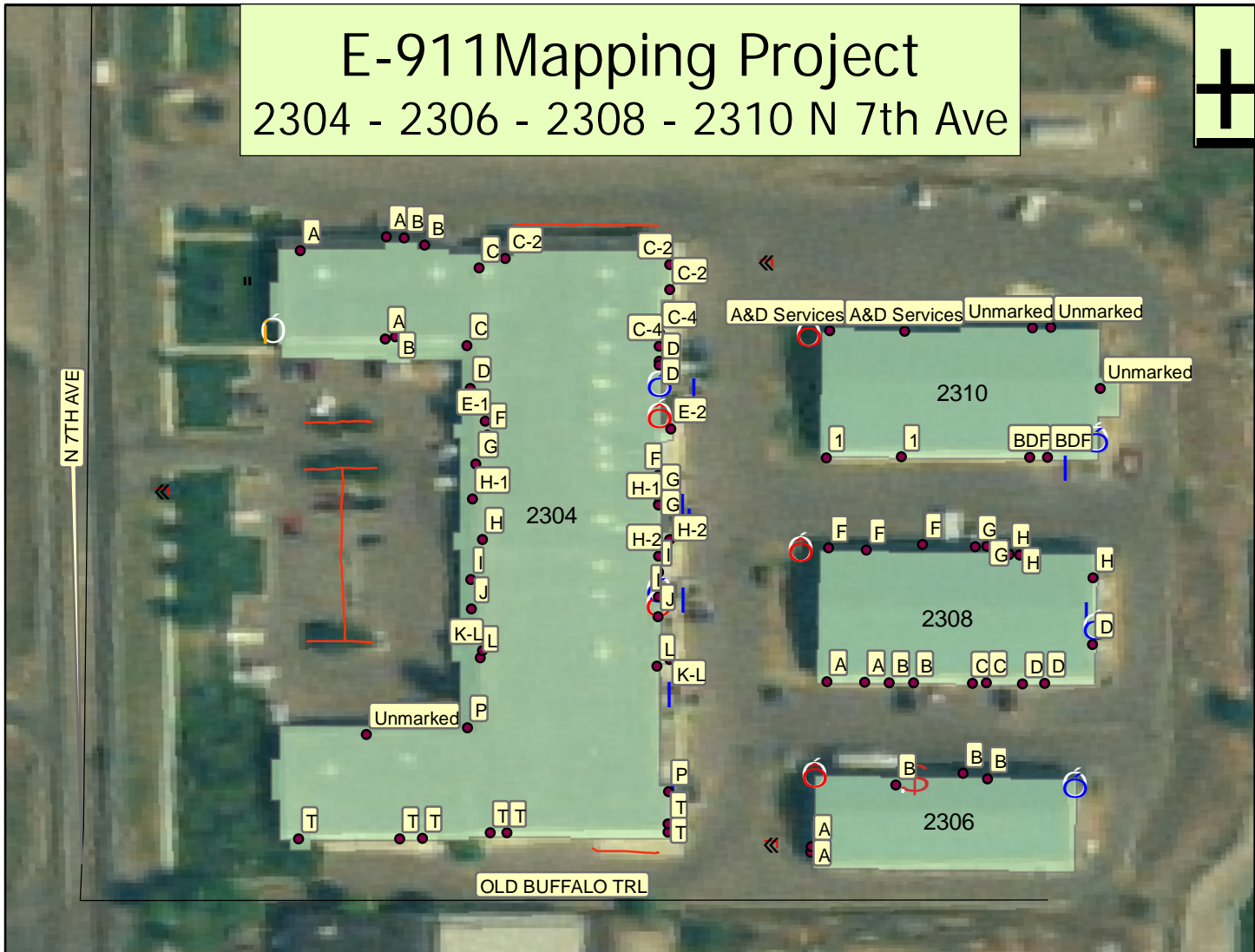


E-911 Mapping Project

2304 - 2306 - 2308 - 2310 N 7th Ave



2304
A - Keepsakes
B - American Computer Museum
C - Equinox Theatre Company
C-2 Circuit Women in Fitness
C-4 - Unmarked
D - JeVo Salon
E-1 - Pierce Chiropractic
E-2 - Floor Coverings International
F - Bozeman Safe and Lock
G - Sierra Pacific Windows
H-1- Fluid Motion
H-2 - Montana Party Rentals
I - Montana Party Rentals
J - All About Pianos
K-L - Miralogix
P - Image Labs
T - New Wave Research

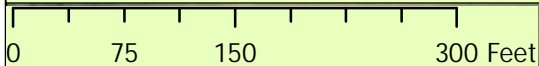
2306
A - Montana Party Rentals
B - Montana Party Rentals

2308
A - Rocky Mountain Roasting Co
B - Rocky Mountain Roasting Co
C - Unmarked
D - Unmarked
F - Modern Staple Inc.
G - Mixed Martial Arts
H - Unmarked

2310
1 - Adolescent Resource Center
BDF - Bozeman Deaconess Foundation
A&D Services - Alcohol & Drug Services of Gallatin County

Legend

- Entrance
- « Fire Hydrant
- Fire Sprinkler
- \$ Propane Tanks
- ⊙ Gas Shutoff Valve
- ⊙ Power Shutoff Valve
- | Dumpster
- " Well
- Parking Median
- Roads
- Buildings



Created By: Mike Glenn