



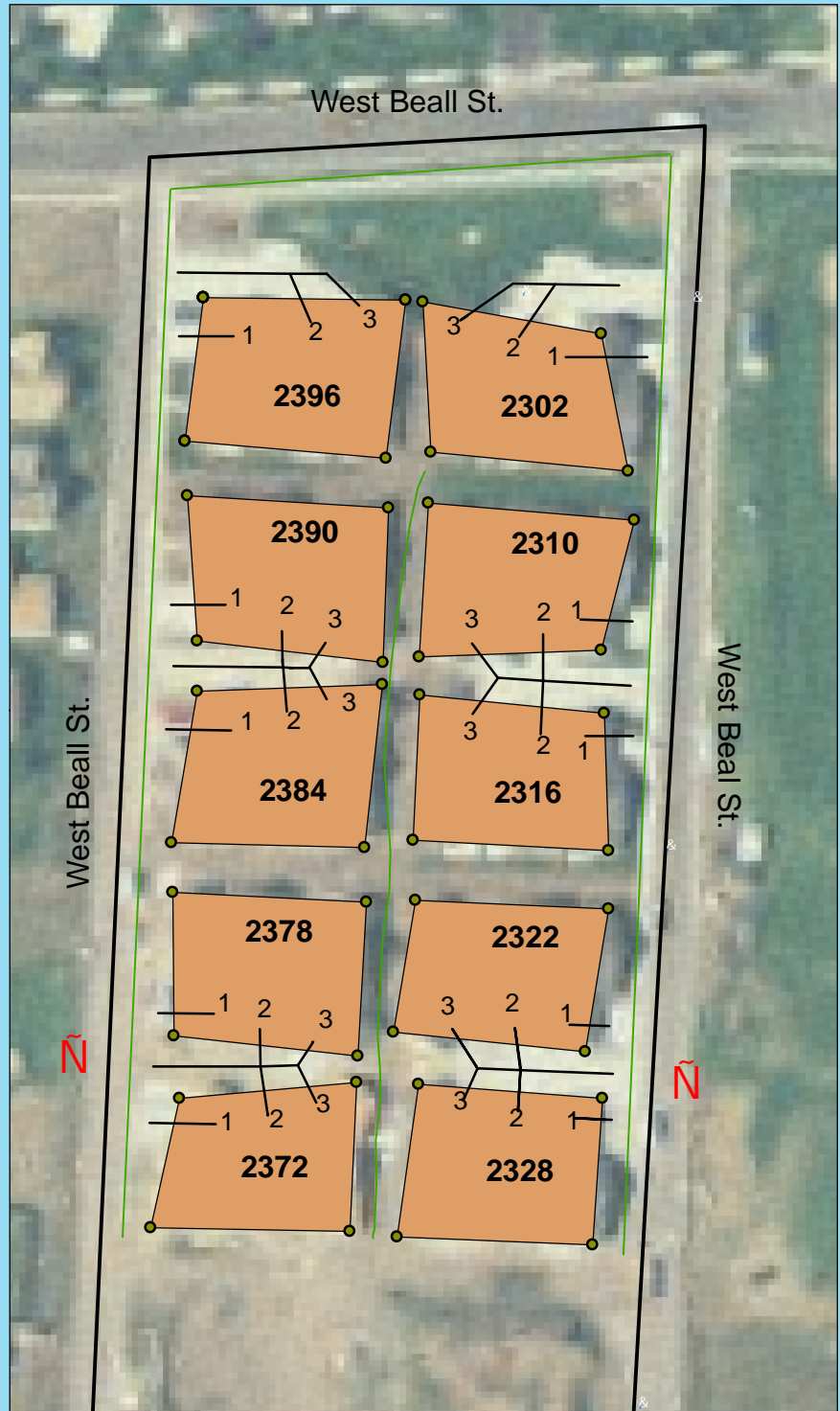


# E-911: North Lesley Estates

## Important Features

-  Fire Hydrant
-  Manhole
-  Sidewalk
-  Buildings

**Purpose:**  
This map was created for the Bozeman Fire Department. Its purpose is to provide a better spatial understanding of a confusing building complex, in hopes to improve 911 response times.



By: Andrew McClean & Jason Baldes  
Resources: MSU GPS & GIAC Labs  
4/17/07  
Source: Montana NRIS

