



Informational Webinar | March 1, 2022

**School
Gardens**

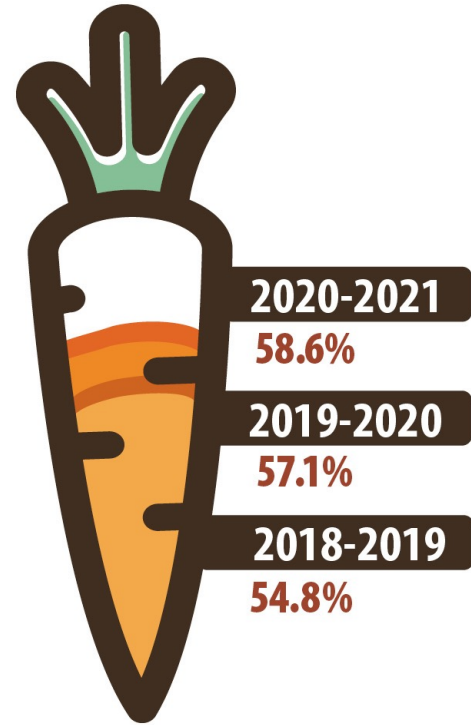


Procurement

Education

Farm to School is Growing in Montana!

<https://www.montana.edu/mtfarmtoschool/connect/index.html>





What is the Institute?

<https://www.montana.edu/mtfarmtoschool/institute.html>

Partners + Funders



NATIONAL CENTER
FOR APPROPRIATE
TECHNOLOGY



The Farm to School Institute model was developed by Vermont FEED using evidence-based best practices in professional learning.

What is the Institute?

Year-Long Program

Cultivating Sustainable F2S Progress

- **Action planning**
- **Coaching**
- **Team building**

Support + Peer-to-Peer Sharing

Timeline + Requirements

May 2022	Aug 2022	2022-2023	Jan 2023	May 2023
<p>Attend introduction webinar.</p> <p>Meet with assigned Farm to School Coach in-person at your school site(s).</p> <p>Complete pre-assessments.</p> <p>Pay program fee.</p>	<p>Attend and participate in three-day in-person Summer Retreat (August 16-18 at Chico).</p> <p>Create action plan.</p>	<p>Implement farm to school action plans and meet with Farm to School Coach 4+ times during the year.</p>	<p>Attend mid-year virtual gathering. (Optional)</p>	<p>Attend end of year virtual gathering to present successes, challenges, and next action plan.</p> <p>Complete post-assessments.</p>



Application Process

Application Process


- Due March 25
- Application
 - Form
 - F2S Rubric
 - Administrator Form
- May have interview and/or written clarification questions
- Notifications made by mid-April
 - Selecting three teams
- <https://www.montana.edu/mtfarm/toschool/institute.html>






Announcements

Trainings + Events

MONTANA
STATE UNIVERSITY

Search pages & people 


Montana Farm to School

Resources ▾

Montana Harvest of the Month ▾

Farm to School Leadership Team ▾

Connect ▾



Montana Farm to School
Montana Team Nutrition Program
Montana State University
324 Reid Hall
PO Box 173370
Bozeman MT 59717-3370

Aubree Roth
Farm to School Coordinator
(406) 994-5996

Montana Farm to School / Resources / Trainings and Events

Trainings and Events

Upcoming Training & Events

Montana Crunch Time

Montana Crunch Time is a statewide event to celebrate National Food Day and National Farm to School Month in Montana by crunching into locally and regionally grown apples in October.

Montana Crunch Time 2021 will be held on **October 20th**. Register your crunch by October 31st to help Montana win the Mountain Plains Regional Crunch Off. Visit the [Crunch Time site](#) for more information.

Archived Training & Webinars

USDA hosts farm to school webinar series on a regular basis. Check out the current webinar series or recorded versions [online](#).

- ▼ [Montana Farm to School Summit: Digging Deeper - August 2021](#)
- ▼ [Farm to School Showcase: Grant Writing for Farm to School - April 2021](#)

<https://www.montana.edu/mtfarmtoschool/resources/training-event.html>

Cultivating F2S Connections Project

- Fall Producer Trainings
Bringing the Farm to School Curriculum:
<https://www.farmtoschool.org/our-work/bringingf2s>
- Farm to School Institute



Montana Farm to School Leadership Team

Communication

Procurement

K-12 Education

Farm to ECE

Beef to School

Service-learning Program

Equity



Montana



Crunch Time

October 19, 2022

<https://www.montana.edu/mtf-armtoschool/mt-crunch-time.html>

Share your crunch bytes using
#MTCrunchTime

Calendar 2021-2022



August – Cherries



September – Brassicas



October – Apples



Nov. – Winter Squash



December – Lentils



January – Carrots



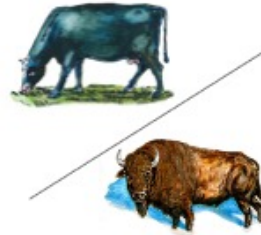
February – Beets



March – Grains



April – Chickpeas



May – Beef + Bison



June – Leafy Greens



July - Dairy

Montana Marinara

- Schools are testing now!
- Partnership between:
 - Mission West Community Development Partners
 - NW Food Hub Network
 - OPI
- Features:
 - USDA Foods Tomatoes
 - Montana veggies and herbs



Supply Chain Assistance Funds

- To be distributed from OPI to schools Mid-March
 - Districts must sign the Attestation Statement by March 1
 - Minimum allotment \$5000 + additional amount based on enrollment
- Funds to be used for unprocessed and minimally processed foods
 - Excellent opportunity to buy local! Make connections now!
- <https://opi.mt.gov/Leadership/Management-Operations/School-Nutrition/Supply-Chain-Assistance-for-Schools>

Dig In!

Montana Farm to School

www.montana.edu/mtfarmtoschool

Facebook

<https://www.facebook.com/montanafarmtoschool>

Instagram

<https://www.instagram.com/mtfarmtoschool/>

Contact

Aubree Roth

(406) 994-5996 | aubree.roth@montana.edu

