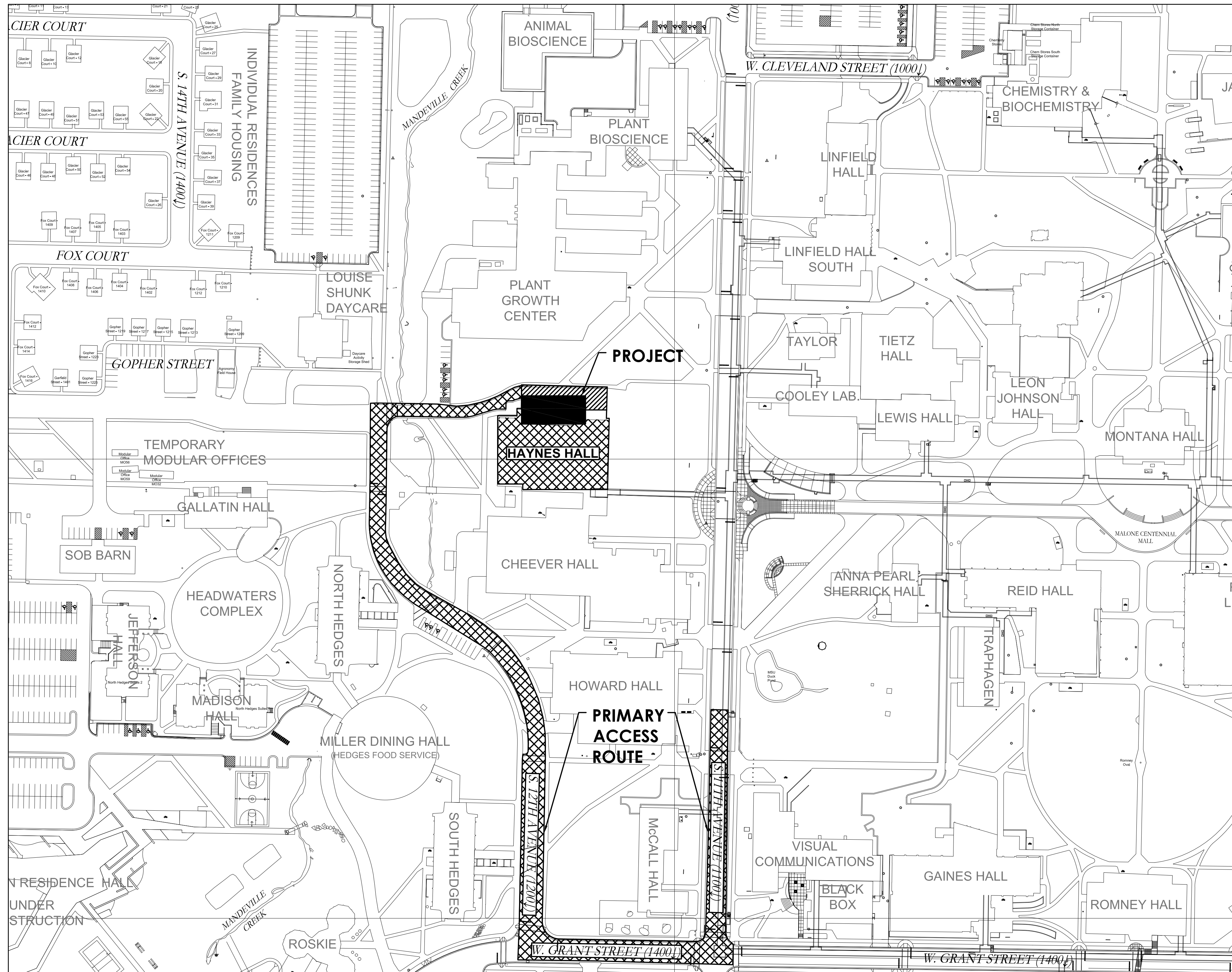
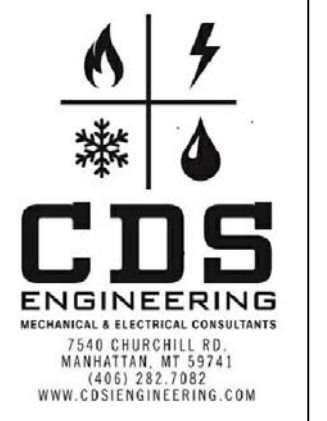


HAYNES HALL CERAMICS KILNS AND SCULPTURE FURNACE

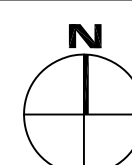
CONSTRUCTION DOCUMENTS 21 AUGUST, 2020

MECHANICAL AND ELECTRICAL ENGINEERS:
CONSULTING DESIGN SOLUTIONS, INC.
7540 CHURCHILL RD
MANHATTAN, MT 59741
(406)282-7082

IT IS ABSOLUTELY NECESSARY FOR ALL TRADES INCLUDING EQUIPMENT SUPPLIERS TO COORDINATE WITH EACH OTHER AND TO VERIFY THAT THERE ARE NO CONFLICTS IN LOCATIONS OF DUCTS, CONDUITS, SPRINKLER HEADS, SPRINKLER PIPING, DIFFUSERS, ELECTRICAL BOXES AND OTHER ITEMS THROUGHOUT THIS PROJECT BEFORE FINAL PLACEMENT OF MATERIALS.



1 SITE PLAN
CVR NO SCALE



GENERAL PROJECT NOTES

- ALL CONSTRUCTION AND CONSTRUCTION METHODS TO BE IN ACCORDANCE WITH APPLICABLE CODES, GOVERNMENTAL AGENCIES, AND LOCAL DESIGN CRITERIA INCLUDING, BUT NOT LIMITED TO, THE FOLLOWING:
INTERNATIONAL BUILDING CODE, 2018 EDITION
INTERNATIONAL MECHANICAL CODE, 2018 EDITION
INTERNATIONAL FUEL GAS CODE, 2018 EDITION
UNIFORM PLUMBING CODE, 2018 EDITION
NATIONAL ELECTRIC CODE, 2017 EDITION
NATIONAL FIRE PROTECTION ASSOCIATION CODE, LATEST EDITION
- ANY AMBIGUITIES OR DISCREPANCIES DISCOVERED BY THE USE OF THESE CONTRACT DOCUMENTS SHALL BE REPORTED TO THE MSU PROJECT MANAGER IMMEDIATELY.
- CHANGES OR DEVIATIONS FROM THE CONTRACT DOCUMENTS MADE WITHOUT THE WRITTEN CONSENT OF THE OWNER ARE UNAUTHORIZED. COORDINATE NECESSARY MODIFICATIONS WITH THE MSU PROJECT MANAGER PRIOR TO CONSTRUCTION.
- THE CONTRACTOR IS RESPONSIBLE FOR THE COORDINATION AND SCHEDULING OF ALL REQUIRED INSPECTIONS DURING THE COURSE OF THE CONSTRUCTION PROJECT. PARTIES REQUIRED TO ATTEND SHOULD BE GIVEN 48 HOURS MINIMUM NOTICE.
- THE CONTRACTOR SHALL BE SOLELY RESPONSIBLE FOR SAFETY AND SHALL TAKE WHATEVER MEASURES ARE NECESSARY TO ENSURE THE HEALTH AND SAFETY OF THE CONTRACTOR'S EMPLOYEES, SUBCONTRACTORS, BUILDING OCCUPANTS, PEDESTRIANS AT OR NEAR THE CONSTRUCTION SITE OR ACCESS ROUTES, AND OF ALL OTHER PERSONS IN AREAS AFFECTED BY THE CONTRACTOR'S CONSTRUCTION ACTIVITIES.

GENERAL SITE / STAGING NOTES

- THE CONTRACTOR SHALL MINIMIZE INTERFERENCE WITH ADJOINING STREETS, SIDEWALKS, PARKING AREAS, AND OTHER ADJACENT OCCUPIED OR USED FACILITIES DURING CONSTRUCTION OPERATIONS. THE CONTRACTOR SHALL NOT BLOCK STREETS, SIDEWALKS, OR ACCESS TO DUMPSTER LOCATIONS AT ANY TIME.
- THE CONTRACTOR SHALL PROTECT EXISTING SITE AND LANDSCAPING FROM DAMAGE CAUSED BY CONSTRUCTION OPERATIONS. THE CONTRACTOR SHALL RESTORE EXISTING SITE AND LANDSCAPING DAMAGED BY CONSTRUCTION OPERATIONS TO CURRENT MSU STANDARDS OR AS DIRECTED BY THE MSU PROJECT MANAGER PRIOR TO SUBSTANTIAL COMPLETION.
- THE CONTRACTOR SHALL PROTECT THE EXISTING BUILDINGS FROM DAMAGE, CONTAMINATION, AND SOILING CAUSED BY CONSTRUCTION OPERATIONS. THE CONTRACTOR SHALL KEEP BUILDING ENTRANCES AND STAIRWELLS CLEAR OF CONSTRUCTION MATERIALS, TOOLS, AND EQUIPMENT AT ALL TIMES.
- THE CONTRACTOR SHALL ACCESS THE SITE FROM S. 19TH AVENUE, 11TH AVENUE, COLLEGE STREET OR GRANT STREET. SOME OF THESE ROUTES MAY NOT BE AVAILABLE DURING THE CONSTRUCTION PERIOD.
- ALL CONTRACTOR VEHICLES PARKED ON CAMPUS, INCLUDING VEHICLES OWNED BY EMPLOYEES OF THE CONTRACTOR, SHALL BE PARKED IN DESIGNATED PARKING AREAS ONLY. VEHICLES MAKING DELIVERIES TO THE PROJECT SITE MUST BE MOVED TO A DESIGNATED PARKING AREA OR REMOVED FROM CAMPUS IMMEDIATELY AFTER UNLOADING. ALL VEHICLES PARKED IN DESIGNATED PARKING AREAS MUST HAVE A VALID MSU PARKING PERMIT. PERMITS CAN BE PURCHASED FROM THE UNIVERSITY POLICE (994-2121). VIOLATORS OF MSU VEHICLE REGULATIONS MAY BE TICKETED AND / OR TOWED. REFER TO SPECIFICATIONS FOR ADDITIONAL INFORMATION.
- CONSTRUCTION STAGING AREA: SHOULD THE CONTRACTOR REQUIRE ON-SITE CONSTRUCTION STAGING, AN AREA FOR THIS PURPOSE WILL BE PROVIDED. THE CONTRACTOR MAY BE REQUIRED TO FENCE THE STAGING AREA TO PREVENT ACCESS FROM UNAUTHORIZED PERSONNEL. THE CONTRACTOR SHALL RESTORE AREAS USED FOR CONSTRUCTION STAGING THAT ARE DAMAGED DURING THE COURSE OF CONSTRUCTION OPERATIONS TO CURRENT MSU STANDARDS OR AS DIRECTED BY THE MSU PROJECT MANAGER PRIOR TO SUBSTANTIAL COMPLETION.

LEGEND

THE CONTRACTOR SHALL LIMIT HIS OPERATIONS TO THE AREAS DEFINED BELOW. AREAS BEYOND THESE LIMITS ARE NOT IN CONTRACT (NIC) AND SHALL NOT BE USED BY THE CONTRACTOR FOR ANY PURPOSE DURING THE COURSE OF CONSTRUCTION.

- CONSTRUCTION STAGING AREA- CONTRACTOR MAY UTILIZE THE INDIVIDUAL PARKING SPACES WITHIN THE SCOPE OF THIS PROJECT FOR CONSTRUCTION STAGING. STAGING AREA LOCATIONS INDICATED ON SITE PLAN ARE APPROXIMATE.
- PRIMARY ACCESS ROUTE: JOB RELATED VEHICULAR TRAFFIC SHALL ACCESS THE CONSTRUCTION SITE BY THIS ROUTE ONLY
- CONTRACT LIMITS (CONSTRUCTION SCOPE OF WORK)

INDEX OF DRAWINGS

- CVR SITE PLAN, GENERAL PROJECT NOTES, GENERAL SITE / STAGING NOTES, LEGEND, INDEX OF DRAWINGS, PHASING NOTES
- MD1.1 PARTIAL FIRST FLOOR PLAN - MECHANICAL DEMOLITION
 - M1.1 PARTIAL FIRST FLOOR PLAN - MECHANICAL NEW WORK
 - M3.1 MECHANICAL DETAILS, SCHEDULES AND LEGEND.
 - ED1.1 PARTIAL FIRST FLOOR PLAN - ELECTRICAL DEMOLITION
 - E1.1 PARTIAL FIRST FLOOR PLAN - ELECTRICAL NEW WORK
 - E3.1 ELECTRICAL LEGEND AND SCHEDULES

PHASING NOTES

- OWNER PRE-PURCHASE
- DEMOLITION OF SPACE AND CLEAN. POUR CURB AND BASES.
- INSTALL KILNS, MAKE FINAL CONNECTIONS AND COMPLETE PROJECT CONSTRUCTION

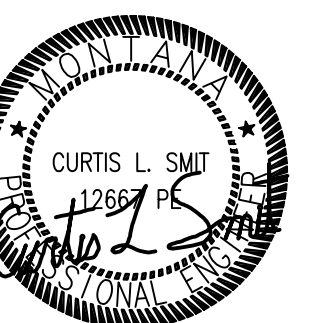
CONSTRUCTION DOCUMENTS

HAYNES HALL CERAMICS KILNS AND SCULPTURE FURNACE

FACILITIES PLANNING,
DESIGN & CONSTRUCTION
MONTANA STATE UNIVERSITY
BOZEMAN, MONTANA
PHONE: 406.994.4331 FAX: 406.994.6572

DRAWN BY: CLS
REVIEWED BY: CLS

REV.	DESCRIPTION	DATE



PPA #19-0079
CDS #1942

SHEET
CVR

DATE
21 AUG 2020

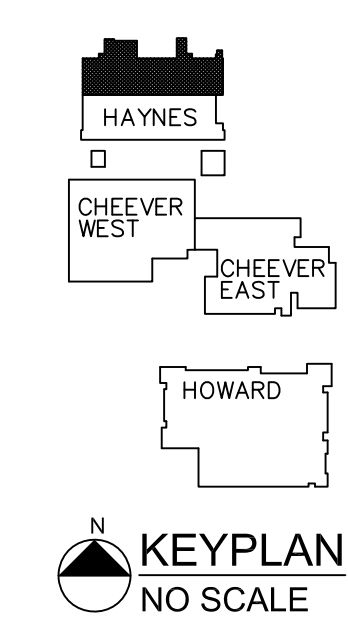
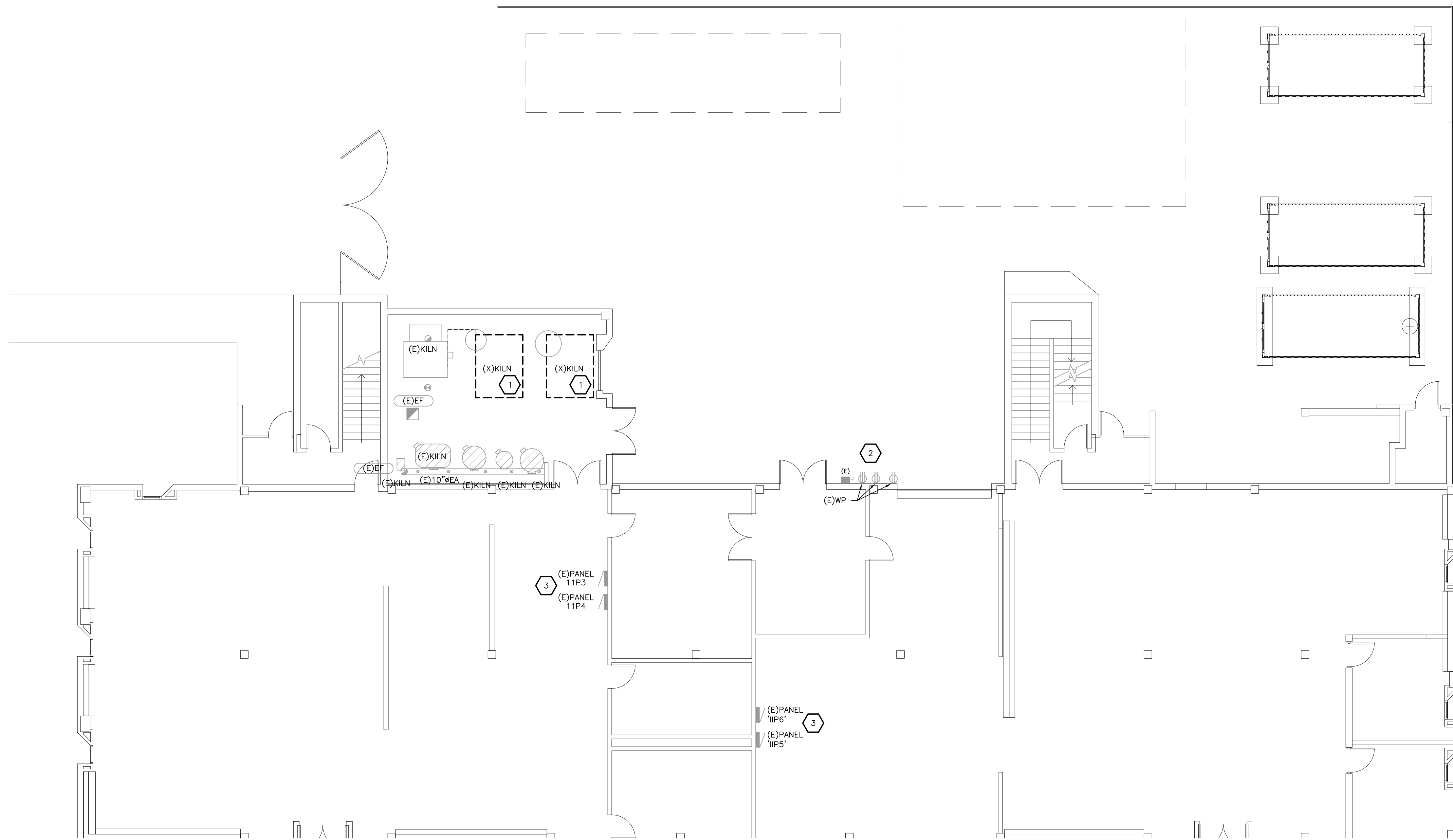
IT IS ABSOLUTELY NECESSARY FOR ALL TRADES INCLUDING EQUIPMENT SUPPLIERS TO COORDINATE WITH EACH OTHER AND TO VERIFY THAT THERE ARE NO CONFLICTS IN LOCATIONS OF DUCTS, CONDUITS, SPRINKLER HEADS, SPRINKLER PIPING, DIFFUSERS, ELECTRICAL BOXES AND OTHER ITEMS THROUGHOUT THIS PROJECT BEFORE FINAL PLACEMENT OF MATERIALS.

GENERAL NOTES

1. PROVIDE NEW CONDUCTORS IN EXISTING RACEWAYS THAT ARE FEASIBLE TO RE-USE. USE EXISTING BACKBOXES WITH NEW DEVICES IN APPROPRIATE AREAS.
2. ALL WORK SHALL BE PERFORMED IN STRICT ACCORDANCE WITH NEC, STATE AND LOCAL BUILDING CODE.
3. RETURN ANY USABLE/ SALVAGEABLE ELECTRICAL DEVICES TO OWNER INCLUDING BUT NOT LIMITED TO: LIGHT FIXTURES, ELECTRICAL HEATERS, PANELS, CIRCUIT BREAKERS ETC. CONFIRM WITH OWNER ITEMS THAT ARE DESIRABLE FOR RETENTION.
4. ALL ITEMS ON DEMOLITION PLANS AND PROVIDED WITH A (X) ARE TO BE REMOVED UNLESS NOTED OTHERWISE. ITEMS PROVIDED WITH AN (E) ARE TO REMAIN. NOTE - ITEMS SHOWN IN THE DEMOLITION PLANS ARE BASED ON "EXISTING AS-BUILTS". ADDITIONAL ELECTRICAL ITEMS MAY BE ENCOUNTERED THAT ARE NOT SHOWN.
5. ANY WORK THAT REQUIRES POWER DISRUPTIONS SHALL BE SCHEDULED, MINIMUM OF 5 WORKING DAYS AHEAD OF TIME, AND APPROVED BY THE OWNER. ALL WORK SHALL BE PERFORMED WITH NO DISRUPTION OF THE OWNER'S BUSINESS.

CONSTRUCTION NOTES

1. EXISTING KILN, HOOD AND FLUE/EXHAUST DUCT TO BE REMOVED BY MSU STAFF. ELECTRICAL AND GAS TO BE DISCONNECTED BY MSU STAFF FOR CONTRACTOR TO REMOVE AS NEEDED FOR NEW WORK. SEE E1.1 FOR NEW KILNS. COORDINATE SCHEDULE AT LEAST ONE MONTH IN ADVANCE WITH MSU PROJECT MANAGER.
2. WALL MOUNTED ELECTRICAL EQUIPMENT TO REMAIN. NEW KILN TO BE INSTALLED A MINIMUM OF 18" AWAY FROM WALL.
3. EXISTING PANELBOARDS ARE WESTINGHOUSE "NOB" TYPE.



PARTIAL FIRST FLOOR PLAN - ELECTRICAL DEMOLITION
SCALE: 1/8" = 1'-0"

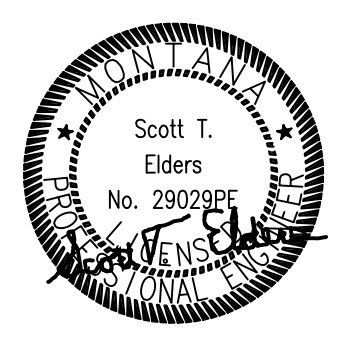


HAYNES HALL CERAMICS KILNS AND SCULPTURE FURNACE

FACILITIES PLANNING,
DESIGN & CONSTRUCTION
MONTANA STATE UNIVERSITY
BOZEMAN, MONTANA
PHONE: 406.994.4131 FAX: 406.994.6572

CONSTRUCTION DOCUMENTS

DRAWN BY:	STE	
REVIEWED BY:	STE	
REV.	DESCRIPTION	DATE



PPA#19-0079
CDS #1942

FIRST FLOOR PLAN - ELEC DEMO SHEET ED1.1

DATE
21 AUG 2020

MSU IN 2020 10/27/20 11:42 AM 1/8" = 1'-0" PPA#19-0079 SHEET ED1.1

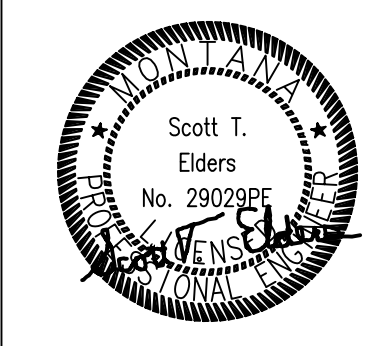
IT IS ABSOLUTELY NECESSARY FOR ALL TRADES INCLUDING EQUIPMENT SUPPLIERS TO COORDINATE WITH EACH OTHER AND TO VERIFY THAT THERE ARE NO CONFLICTS IN LOCATIONS OF DUCTS, CONDUITS, SPRINKLER HEADS, SPRINKLER PIPING, DIFFUSERS, ELECTRICAL BOXES AND OTHER ITEMS THROUGHOUT THIS PROJECT BEFORE FINAL PLACEMENT OF MATERIALS.



HAYNES HALL CERAMICS KILNS AND SCULPTURE FURNACE

FACILITIES PLANNING,
DESIGN & CONSTRUCTION
MONTANA STATE UNIVERSITY
BOZEMAN, MONTANA
PHONE: 406.994.4131 FAX: 406.994.6572

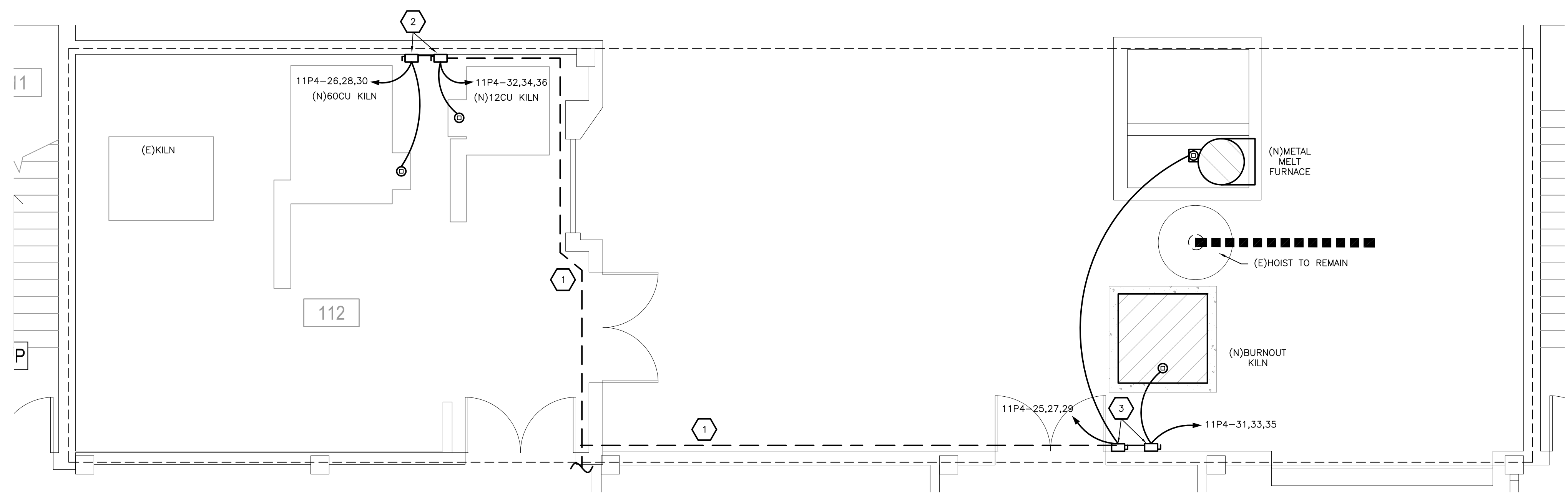
DRAWN BY:	STE	
REVIEWED BY:	STE	
REV.	DESCRIPTION	DATE



PPA#19-0079
CDS #1942

FIRST FLOOR PLAN - ELEC NEW SHEET E1.1

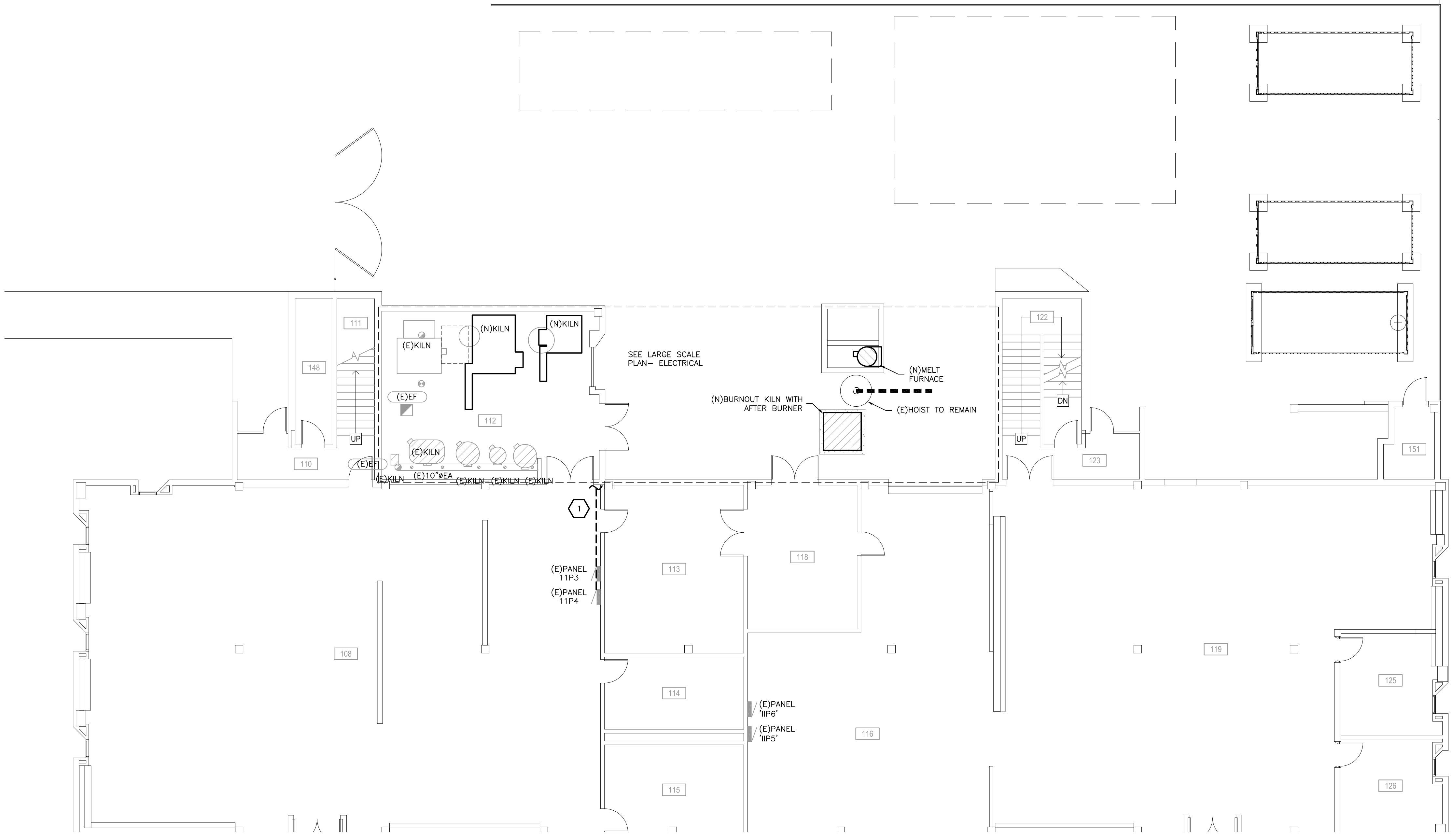
DATE
21 AUG 2020



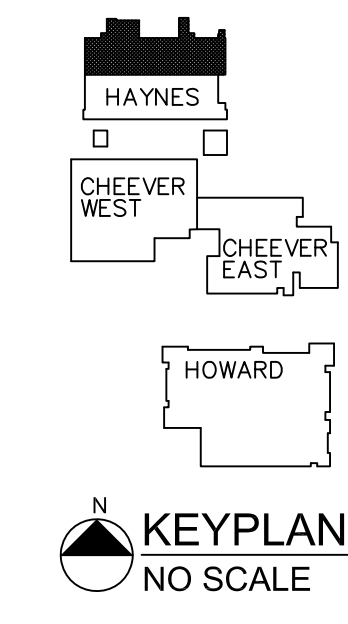
LARGE SCALE PLAN - ELECTRICAL
SCALE: 1/4" = 1'-0"

- GENERAL NOTES**
1. INSTALL ALL NEW WORK TO MEET CURRENT CODES AND INSTALLATION STANDARDS.
 2. COORDINATE ALL UTILITY INTERRUPTIONS WITH THE OWNER AND PROVIDE 72 HOURS NOTIFICATION PRIOR TO ANY UTILITY SHUT DOWN, UNLESS NOTED OTHERWISE.
 3. RECEPTACLES WITH A SOLID CENTER ARE TO BE PROVIDED AS GROUND FAULT CIRCUIT INTERRUPTER(GFCI) RECEPTACLES. EACH RECEPTACLE SHOWN WITH A FILLED CENTER SHALL BE PROVIDED WITH A GFCI RECEPTACLE. PROVIDING ONE (1) GFCI RECEPTACLE WHICH PROTECTS MULTIPLE STANDARD RECEPTACLES IS NOT ALLOWED.
 4. NEW CONDUCTORS SHALL BE COPPER AND A MINIMUM OF #12 GAUGE.
 5. NEW WIRING DEVICES SHALL BE SPECIFICATION GRADE AND RATED FOR 20 AMPS.
 6. PROVIDE UNI-STRUT BACKING MOUNTED DIRECTLY TO THE BUILDINGS STRUCTURE TO SUPPORT THE ELECTRICAL EQUIPMENT SHOWN ON THE DRAWINGS.

- CONSTRUCTION NOTES**
1. SURFACE MOUNT CONDUIT ALONG WALL, NEAR CEILING TO SERVE NEW KILNS.
 2. PROVIDE 30A, HEAVY DUTY RATED SAFETY SWITCHES AT EACH KILN WITH LIQUID TIGHT FLEXIBLE CONDUIT FROM THE SAFETY SWITCH TO THE KILN. NEMA 1 RATED FOR THE INTERIOR LOCATIONS.
 3. PROVIDE 30A, SWITCH-RATED RECEPTACLES FOR THE EXTERIOR DISCONNECTS, SIMILAR TO THE MELTRIC 'DS30' SERIES. PROVIDE 'SO' CORD FROM THE PROVIDED EQUIPMENT TO MATCHING SWITCH RATED PLUG(S). IF EQUIPMENT IS NOT RATED FOR EXTERIOR USE, USER WILL BE USING THE EQUIPMENT AT HIS/HER OWN RISK. CIRCUIT BREAKERS FEEDING THE EQUIPMENT SHALL BE GFCI RATED.



PARTIAL FIRST FLOOR PLAN - ELECTRICAL NEW WORK
SCALE: 1/8" = 1'-0"



NO. IN 2020: 157,000; 1/24/21 11:42 AM; 11/11/20 10:00 AM; 11/11/20 10:00 AM; 11/11/20 10:00 AM

IT IS ABSOLUTELY NECESSARY FOR ALL TRADES INCLUDING EQUIPMENT SUPPLIERS TO COORDINATE WITH EACH OTHER AND TO VERIFY THAT THERE ARE NO CONFLICTS IN LOCATIONS OF DUCTS, CONDUITS, SPRINKLER HEADS, SPRINKLER PIPING, DIFFUSERS, ELECTRICAL BOXES AND OTHER ITEMS THROUGHOUT THIS PROJECT BEFORE FINAL PLACEMENT OF MATERIALS.



HAYNES HALL CERAMICS KILNS AND SCULPTURE FURNACE

FACILITIES PLANNING, DESIGN & CONSTRUCTION
MONTANA STATE UNIVERSITY
BOZEMAN, MONTANA
PHONE: 406.994.4131 FAX: 406.994.6572

CONSTRUCTION DOCUMENTS

ELECTRICAL LEGEND (NOT ALL SYMBOLS ARE USED ON THIS PROJECT)

	CEILING MOUNTED RECEPTACLE		DUPLEX RECEPTACLE		BRANCH CIRCUIT CONCEALED IN WALL OR CEILING
	INDICATES GROUND FAULT INTERRUPTER DEVICE		HORIZONTALLY MOUNTED DUPLEX RECEPTACLE		LOW VOLTAGE CABLING
	FLOOR RECEPTACLE - COMBINATION POWER/DATA		30A DRYER RECEPTACLE		EMPTY CONDUIT - 3/4" UNLESS NOTED OTHERWISE
	POWER DIRECT CONNECTION		50A RANGE RECEPTACLE		HOME RUN TO PANEL. NUMBER OF ARROWS INDICATES NUMBER OF CIRCUITS.
	POWER MOTOR CONNECTION		QUADRUPLEX RECEPTACLE		NUMBER OF HASHMARKS INDICATES NUMBER OF CONDUCTORS. NO HASHMARKS INDICATES TWO CONDUCTORS. HASHMARKS NOT SHOWN FOR GROUND WIRES.
	ELECTRICAL PANEL - 208Y/120V 3 PHASE 4 WIRE				
	JUNCTION BOX - MINIMUM OF 4" SQUARE ELECTRICAL BOX				

ABBREVIATIONS

AC	ABOVE COUNTER	(E)	EXISTING TO REMAIN	LTS	LIGHTS	(R)	REMOVE AND RELOCATE
ADA	AMERICANS W/ DISABILITIES	EF	EXHAUST FAN	MECH	MECHANICAL	RCPT	RECEPTACLE(S)
AD	ACCESS DOOR	ELECT	ELECTRICAL	M.C.	M.C. MECHANICAL CONTRACTOR	SCH	SCHEDULE
AFT	ABOVE FINISHED FLOOR	EPO	EMERGENCY POWER OFF	MDB	MAIN DISTRIBUTION BOARD	SF	SQUARE FOOT
AHU	AIR HANDLING UNIT	EW	ELECTRIC WATER COOLER	MDP	MAIN DISTRIBUTION PANEL	TC	TEMPERATURE CONTROLS CONTRACTOR
BKR, CB	CIRCUIT BREAKER	FCO	FLOOR CLEANOUT	MFR	MANUFACTURER	TGB	TELECOMMUNICATIONS GROUND BAR
CLNG	CEILING	FCU	FAN COIL UNIT	MLO	MAIN LUGS ONLY	TTB	TELECOMMUNICATIONS TERMINAL BOARD
CONT	CONTINUATION	FD	FLOOR DRAIN	(N)	NEW	TYP	TYPICAL
DDC	DIRECT DIGITAL CONTROL	FD	FIRE DAMPER	NEC	NATIONAL ELECTRICAL CODE	UH	UNIT HEATER
DF	DRINKING FOUNTAIN	FD/SD	FIRE/SMOKE DAMPER	NL	NIGHT LIGHT	UNO	UNLESS NOTED OTHERWISE
DISC	DISCONNECT SWITCH	FE	FIRE EXTINGUISHER	NO	NUMBER	W	WALL-MOUNTED DEVICE
E.C., EC	ELECTRICAL CONTRACTOR	FS	FLOOR SINK	OD, O.D.	OUTSIDE DIAMETER	WG	WIRE GUARD
		GFCI, GFI	GROUND FAULT CIRCUIT INTERRUPTER	PB	PULL BOX	WP	WEATHERPROOF-IN-USE
		GND	GROUND	PFR	PER MFR'S RECOMMENDATIONS	WR	WEATHER-RESISTANT
		HO H.O.	HIGH OUTPUT	POS	POINT OF SALE (CASH REGISTER)		
		IG	INSULATED GROUND				

(E) PANEL 'IIP3'

BREAKER	DESCRIPTION	CIRCUIT	PHASE LOADS			CIRCUIT	DESCRIPTION	BREAKER
			#	VA	#			
20	RECEPTACLE FOR WALL	1	0	0	2	RECEPTACLE FOR WALL	20	
20	RECEPTACLE FOR WALL	3	0	0	4	RECEPTACLE FOR WALL	20	
20	RECEPTACLE FOR WALL	5	0	0	6	RECEPTACLE FOR WALL	20	
20	RECEPTACLE FOR WALL	7	0	0	8	RECEPTACLE FOR WALL	20	
20	RECEPTACLE FOR WALL	9	0	0	10	RECEPTACLE FOR WALL	20	
20	RECEPTACLE FOR WALL	11	0	0	12	RECEPTACLE FOR WALL	20	
20	RECEPTACLE FOR WALL	13	0	0	14	RECEPTACLE FOR WALL	20	
20	RECEPTACLE FOR WALL	15	0	0	16	RECEPTACLE FOR WALL	20	
20	RECEPTACLE FOR WALL	17	0	0	18	RECEPTACLE FOR WALL	20	
20	RECEPTACLE FOR WALL	19	0	0	20	RECEPTACLE FOR WALL	20	
20	RECEPTACLE FOR WALL	21	0	0	22	RECEPTACLE FOR WALL	20	
20	RECEPTACLE FOR WALL	23	0	0	24	RECEPTACLE FOR WALL	20	
20	RECEPTACLE FOR WALL	25	0	0	26	RECEPTACLE FOR WALL	20	
20	RECEPTACLE FOR WALL	27	0	0	28	RECEPTACLE FOR WALL	20	
20	RECEPTACLE FOR WALL	29	0	0	30	RECEPTACLE FOR WALL	20	
20	RECEPTACLE FOR WALL	31	0	0	32	RECEPTACLE FOR WALL	20	
20	RECEPTACLE FOR WALL	33	0	0	34	RECEPTACLE FOR WALL	20	
20	RECEPTACLE FOR WALL	35	0	0	36	RECEPTACLE FOR WALL	20	
20	RECEPTACLE FOR WALL	37	0	0	38	RECEPTACLE FOR WALL	20	
20	RECEPTACLE FOR WALL	39	0	0	40	RECEPTACLE FOR WALL	20	
20	RECEPTACLE FOR WALL	41	0	0	42	RECEPTACLE FOR WALL	20	
			0	0	0			
TOTAL LOADS DEMAND:			0 WATTS			0 AMPS		

(E) PANEL 'IIP4'

BREAKER	DESCRIPTION	CIRCUIT	PHASE LOADS			CIRCUIT	DESCRIPTION	BREAKER
			#	VA	#			
20	RECEPTACLE FOR WALL	1	0	0	2	RECEPTACLE FOR WALL	20	
20	RECEPTACLE FOR WALL	3	0	0	4	RECEPTACLE FOR WALL	20	
20	RECEPTACLE FOR WALL	5	0	0	6	RECEPTACLE FOR WALL	20	
20	RECEPTACLE FOR WALL	7	0	0	8	RECEPTACLE FOR WALL	20	
20	RECEPTACLE FOR WALL	9	0	0	10	RECEPTACLE FOR WALL	20	
20	RECEPTACLE FOR WALL	11	0	0	12	RECEPTACLE FOR WALL	20	
20	RECEPTACLE FOR WALL	13	0	0	14	RECEPTACLE FOR WALL	20	
20	RECEPTACLE FOR WALL	15	0	0	16	RECEPTACLE FOR WALL	20	
20	RECEPTACLE FOR WALL	17	0	0	18	RECEPTACLE FOR WALL	20	
20	RECEPTACLE FOR WALL	19	0	0	20	RECEPTACLE FOR WALL	20	
20	RECEPTACLE FOR WALL	21	0	0	22	RECEPTACLE FOR WALL	20	
20	RECEPTACLE FOR WALL	23	0	0	24	RECEPTACLE FOR WALL	20	
20	RECEPTACLE FOR WALL	25	0	0	26	RECEPTACLE FOR WALL	20	
20	RECEPTACLE FOR WALL	27	0	0	28	RECEPTACLE FOR WALL	20	
20	RECEPTACLE FOR WALL	29	0	0	30	RECEPTACLE FOR WALL	20	
20	RECEPTACLE FOR WALL	31	0	0	32	RECEPTACLE FOR WALL	20	
20	RECEPTACLE FOR WALL	33	0	0	34	RECEPTACLE FOR WALL	20	
20	RECEPTACLE FOR WALL	35	0	0	36	RECEPTACLE FOR WALL	20	
20	RECEPTACLE FOR WALL	37	0	0	38	RECEPTACLE FOR WALL	20	
20	RECEPTACLE FOR WALL	39	0	0	40	RECEPTACLE FOR WALL	20	
20	RECEPTACLE FOR WALL	41	0	0	42	RECEPTACLE FOR WALL	20	
			0	0	0			
TOTAL LOADS DEMAND:			0 WATTS			0 AMPS		

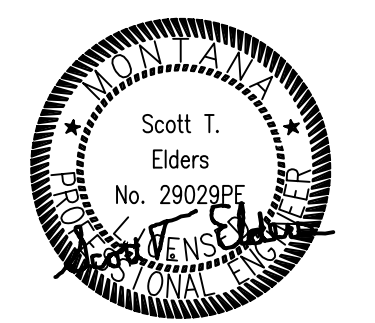
(N) PANEL 'IIP4'

BREAKER	DESCRIPTION	CIRCUIT	PHASE LOADS			CIRCUIT	DESCRIPTION	BREAKER
			#	VA	#			
20	RECEPTACLE FOR WALL	1	0	0	2	RECEPTACLE FOR WALL	20	
20	RECEPTACLE FOR WALL	3	0	0	4	RECEPTACLE FOR WALL	20	
20	RECEPTACLE FOR WALL	5	0	0	6	RECEPTACLE FOR WALL	20	
20	RECEPTACLE FOR WALL	7	0	0	8	RECEPTACLE FOR WALL	20	
20	RECEPTACLE FOR WALL	9	0	0	10	RECEPTACLE FOR WALL	20	
20	RECEPTACLE FOR WALL	11	0	0	12	RECEPTACLE FOR WALL	20	
20	RECEPTACLE FOR WALL	13	0	0	14	RECEPTACLE FOR WALL	20	
20	RECEPTACLE FOR WALL	15	0	0	16	RECEPTACLE FOR WALL	20	
20	RECEPTACLE FOR WALL	17	0	0	18	RECEPTACLE FOR WALL	20	
20	RECEPTACLE FOR WALL	19	0	0	20	RECEPTACLE FOR WALL	20	
20	RECEPTACLE FOR WALL	21	0	0	22	RECEPTACLE FOR WALL	20	
20	RECEPTACLE FOR WALL	23	0	0	24	RECEPTACLE FOR WALL	20	
14	RECEPTACLE FOR WALL	25	0	0	26	RECEPTACLE FOR WALL	20	
14	RECEPTACLE FOR WALL	27	0	0	28	RECEPTACLE FOR WALL	20	
14	RECEPTACLE FOR WALL	29	0	0	30	RECEPTACLE FOR WALL	20	
14	RECEPTACLE FOR WALL	31	0	0	32	RECEPTACLE FOR WALL	20	
14	RECEPTACLE FOR WALL	33	0	0	34	RECEPTACLE FOR WALL	20	
14	RECEPTACLE FOR WALL	35	0	0	36	RECEPTACLE FOR WALL	20	
14	RECEPTACLE FOR WALL	37	0	0	38	RECEPTACLE FOR WALL	20	
14	RECEPTACLE FOR WALL	39	0	0	40	RECEPTACLE FOR WALL	20	
14	RECEPTACLE FOR WALL	41	0	0	42	RECEPTACLE FOR WALL	20	
			0	0	0			
TOTAL LOADS DEMAND:			18000 WATTS			50 AMPS		

DRAWN BY: STE

REVIEWED BY: STE

REV.	DESCRIPTION	DATE



PPA#19-0079

CDS #1942

ELECTRICAL LEGEND AND SCHEDULES

SHEET

E3.1

DATE

21 AUG 2020