



UNIVERSITY SERVICES

Sixth Avenue and Grant Street • P.O. Box 172760 • Bozeman, Montana 59717-2760
Phone: (406) 994-5413 • Fax: (406) 994-5665

ADDENDUM NO. 1 - OUTLINE AND SUMMARY INFORMATION

Project Name: Parking Maintenance 2022 PPA No.: 22-0010
Location: Bozeman, MT Date: 05-18-22

To: *All Plan Holders of Record*

*The Plans and Specification prepared by **Stahly Engineering** dated **05-06-2022**, shall be clarified and added as follow. The bidder proposes to perform all the following clarifications or changes. It is understood that the Base Bid shall include any modification of Work or Additional Work that may be required by reason of the following change or clarifications.*

The Bidders are to acknowledge the receipt of this Addendum by inserting its number and date into their Bid Forms. Failure to acknowledge may subject the Bidder to disqualification and rejection of the bid. This Addendum forms part of the Contract Documents as if bound therein and modifies them as follows:

I. PRIOR APPROVALS

A. N/A

II. AMENDMENTS TO THE PROJECT MANUAL

A. Form 098 Bid Proposal:

- Unit of measurement and quantity updated to Bid Item 10, Gravel Lot Grading, to include grading in the football stadium parking areas (Sheets C20N, C20S, C25N and C25S)
- Bid Item 11 name changed, and updated quantity
- Bid Item 13 (motorcycle course striping) was removed from project.

B. Specification 01011 Measure and Payment:

- Bid Item 6 modified to include “No Parking” stencils
- Bid Item 11 Changed to ¾” Road Mix Gravel
- Bid Item 13 Stricken

III. AMENDMENTS TO THE DRAWINGS

- A. Sheet C3: Updated “Arrows/Misc” quantity on drawing summary table
- B. Sheet C4: Removal of Motorcycle Course Striping
- C. Sheet C13: Call-out re: stormwater pond was removed

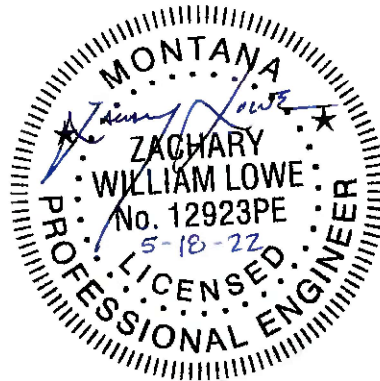
- D. Sheets C15N and C15S: Notes added re: hatched cross walk areas through parking lot
- E. Sheets C20N and C20S Grading areas added, pavement patch removed
- F. Sheet C23 Removed old note
- G. Sheets C25N and C25S: Gravel Grading added to scope of work with updated areas

IV. GENERAL INFORMATION

- A. N/A

V. ATTACHMENTS

- A. Form 098 Bid Proposal
- B. Specification 01011 Measure and Payment
- C. Drawings: Sheets C3, C4, C13, C15N, C15S, C20N, C20S, C23, C25N, & C25S





BID PROPOSAL

Parking Maintenance 2022
PPA No. 22-0010

TO:
 State of Montana, Montana State University
 Campus Planning, Design & Construction
 Attn: Julie Brown, Contract Administrator
 Plew Building, 6th & Grant,
 PO Box 172760
 Bozeman, Montana 59717-2760

Prospective Bidders:

The undersigned, having familiarized themselves with the Contract Documents, site, location, and conditions of the Work as prepared by **Stahly Engineering, 851 Bridger Drive Suite 1, Bozeman, MT 59715, 406/522-8594**, by submission of this Bid Proposal, hereby agrees to provide all materials, systems, equipment and labor necessary to complete the Work for the total sum as follows:

	Item	Quantity	Unit	Unit Price	Cost
1	Mobilization	1	LS		
2	Seal Coat	0	SF		
3	Sweeping	1,683,046	SF		
4	4" Paint Striping (Yellow)	107,014	LF		
5	24" Paint Striping (White)	1,805	LF		
6	Directional Arrow Symbols	214	EA		
7	Curb Painting	9,048	LF		
8	Crack Sealing	6,500	LBS		
9	New Asphalt Paving/Spot Repair	900	SF		
10	Gravel Lot Grading	288,304	SF		
11	Imported 3/4" Base Gravel	90	CY		
12	Parking Garage Maintenance	1	LS		
13	Motorcycle Course Striping	1	LS	\$0	\$0
14	Remove Curb Paint	910	LF		
	TOTAL for all unit prices				\$

BASE BID:

THE BIDDER AGREES TO COMPLETE THE SPECIFIED SCOPE OF WORK FOR THE
 (Total for all Unit prices) COST OF:

_____ and _____ /100 DOLLARS
 (ALPHA notation) \$ _____ (NUMERIC notation)

ALTERNATE 1- SEAL COAT BISON LOT 26:

THE BIDDER AGREES TO COMPLETE THE SPECIFIED SCOPE OF WORK (SHEET C26) FOR THE LUMP SUM COST OF:

_____ and _____ /100 DOLLARS
(ALPHA notation) \$ _____ (NUMERIC notation)

ALTERNATE 2- CHIP SEAL AND SLURRY SEAL LOT 15, BAY 'A':

THE BIDDER AGREES TO COMPLETE THE SPECIFIED SCOPE OF WORK (SHEET C15N) FOR THE LUMP SUM COST OF:

_____ and _____ /100 DOLLARS
(ALPHA notation) \$ _____ (NUMERIC notation)

This bidder acknowledges receipt of the following addenda:

ADDENDUM No.: _____ Dated: _____
ADDENDUM No.: _____ Dated: _____
ADDENDUM No.: _____ Dated: _____

By signing below, the bidder agrees to all terms specified and AGREES TO fulfill the requirements of the CONTRACT in strict accordance with the bidding documents.

Company Name: _____

Signature: _____

Print Name: _____

Title: _____

Business Address: _____

Construction Contractor
Registration No.: _____

Phone No.: _____

Fax No.: _____

Email: _____

Date.: _____

DIVISION 1— GENERAL REQUIREMENTS

SECTION 011011 MEASUREMENT AND PAYMENT

1. GENERAL.

The following items shall constitute all pay items for the work to be done under these specifications. Payment for these items shall be full compensation for the completed item of work and the cost of any incidental work or materials required to complete the item, even though not specifically mentioned herein, shall be merged with and become a part of the applicable pay items.

The Bid Form is part of the contract documents. If a Bid item specifies a type of material, then that type of material is to be used without substitution. Payment will not be made for other material types unless pre-approved by the Engineer.

The Bid Items shown in the Bid Form constitute all pay items for all work shown on the plans and all work described in the specifications. Additional pay items may only be added if additional work items are added to the project by a work change directive (change order).

See the General Conditions for information regarding adjustment to quantities. Also see Article 4 of the General Conditions for further details regarding payments to the Contractor.

2. SPECIFIC BID ITEMS.

1. Mobilization:

- General: This bid item shall include mobilization, bonding, insurance, permitting, and cleanup for the project.
- Work Included:
 - All labor, tools, equipment, materials, and incidentals necessary to complete the work as specified;
 - Transport and set up all equipment, materials and other items needed to complete the project;
 - All permits, coordination and compliance inspections required for work;
 - Bonding and Insurance;
 - Provide all submittals, the construction schedule, and other paperwork required prior to construction start up;
 - All labor, tools, equipment, and incidentals necessary to maintain a clean project site as specified in the project documents;
 - Provide topsoil and seeding for disturbed landscaped areas (see plans and specifications section 02910);
 - All labor, tools, equipment, materials and other items needed to remove all equipment, tools, and materials from the site upon completion of the project.

- Measurement: Measurement for mobilization will be lump sum (LS).
- Payment: Payment shall be by the lump sum item listed on the Proposal.

2. Seal Coat:

- General: This bid item consists of the seal coating of asphalt concrete pavement surface course at the application rate specified in the Specifications.
- Work Included:
 - All labor, tools, equipment, materials, surface preparation and incidentals necessary to complete the work as specified;
 - Provide all materials required to complete the work in accordance to the mix-design and specifications;
 - Prime and tack coats;
 - Loading, haul or other transportation required to place the material;
 - Furnishing, handling, measuring, mixing, manipulation, placing and testing of materials;
 - Hauling and placing the sealcoat mix;
 - Provide initial mix-design of the product;
 - Areas not meeting minimum specifications shall be removed and replaced with no additional measurement and payment.
- Measurement: The installation of the seal coat is measured by the square foot of seal coat surface area. The quantities measured for payment are the square feet of surface area that has the seal coat applied at the specified application rate. Square footage is determined by survey that will be provided before construction commences.
- Payment: Seal coating is paid for at the contract unit bid price per square foot of completed and accepted work.

3. Sweeping

- General: This bid item consists of sweeping the paved lots per the Specifications.
- Work Included:
 - All labor, tools, equipment, materials, surface preparation and incidentals necessary to complete the work as specified;
 - Sweeping shall also include hand-sweeping all sediment from the exterior gutters and removing from parking lot, in addition to clearing all catch basins and curb cuts.
- Measurement: Sweeping is measured by the square foot of asphalt swept. Square footage is determined by areas listed on each plan sheet or by field measurement.
- Payment: Sweeping is paid for at the contract unit bid price per square foot of completed and accepted work.

4. 4" Paint Striping (Yellow):

General: This bid item consists of the painting 4" lines on the asphalt concrete pavement surface course per the Specifications.

- Work Included:
 - All labor, tools, equipment, materials, surface preparation and incidentals necessary to complete the work as specified;
 - Furnishing, handling, and placing paint;
 - Hauling and placing the pavement markings;
 - "Blackout paint" or otherwise covering up errors in striping will not be allowed. Errant striping cannot be removed using "blackout paint."

- Measurement: The installation of the pavement striping is measured by the linear foot of 4" striping applied. The quantities measured for payment are the linear feet that have been applied per specifications. Linear footage is determined by quantity listed on each drawing sheet.
- Payment: Striping is paid for at the contract unit bid price per linear foot of completed and accepted work.

5. 24" Paint Striping (White):

- General: This bid item consists of the painting 24" lines on the asphalt concrete pavement surface course per the Specifications.
- Work Included:
 - All labor, tools, equipment, materials, surface preparation and incidentals necessary to complete the work as specified;
 - Provide all materials required to complete the work in accordance to the mix-design and specifications;
 - Loading, haul or other transportation required to place the material;
 - Furnishing, handling, measuring, mixing, manipulation, placing and testing of materials;
 - Provide initial mix-design of the product;
 - Areas not meeting minimum specifications shall be removed and replaced with no additional measurement and payment.
- Measurement: The installation of the pavement striping is measured by the linear foot of 24" striping applied. The quantities measured for payment are the linear feet that have been applied per specifications. Linear footage is determined by field measurement.
- Payment: Striping is paid for at the contract unit bid price per linear foot of completed and accepted work.

6. Directional Arrow Symbol:

- General: This bid item consists of the painting directional arrow symbol, or "No Parking Stencil" on the asphalt concrete pavement surface course per the Drawings and Specifications.
- Work Included:
 - All labor, tools, equipment, materials, surface preparation and incidentals necessary to complete the work as specified;
 - Provide all materials required to complete the work in accordance to the mix-design and specifications;
 - Loading, haul or other transportation required to place the material;
 - Furnishing, handling, measuring, mixing, manipulation, placing and testing of materials;
 - Provide initial mix-design of the product;
 - Areas not meeting minimum specifications shall be removed and replaced with no additional measurement and payment.
- Measurement: The installation of the directional arrow symbols is measured by each symbol applied. The quantities measured for payment are each symbol that has been applied per specifications. Symbols completed will be determined by field measurement.
- Payment: Directional arrow symbols are paid for at the contract unit bid price per symbol completed and accepted.

7. Curb Painting (Yellow or Red):

- General: This bid item consists of painting concrete curb as shown in the construction drawings and as per the Specifications.
- Work Included:
 - All labor, tools, equipment, materials, surface preparation and incidentals necessary to complete the work as specified;
 - Removal of existing paint, cleanup of the paint removal, and furnishing, handling, and placing paint;
- Measurement: The installation of the curb striping is measured by the linear foot of curb paint is applied to the top and face of curb. The quantities measured for payment are the linear feet that have been applied per specifications. Linear footage is determined by field measurement.
- Payment: Curb Painting is paid for at the contract unit bid price per linear foot of completed and accepted work.

8. Crack Seal:

- General: This bid item shall include all crack sealing per the specifications.
- Work Included:
 - All labor, tools, equipment, materials, surface preparation and incidentals necessary to complete the work including preparation as specified;
 - The contractor is responsible for determining amount of all crack sealing per the Specifications prior to submitting bid.
 - Transport and set up all equipment, materials and other items needed to complete the project;
 - Provide all submittals, the construction schedule, and other paperwork required prior to construction start up;
- Measurement: Measurement for crack seal will be by the pound (LB) of crack sealant.
- Payment: Payment shall be by the unit bid price per pound of the item listed on the bid proposal/per daily verification.

9. New Asphalt Paving or Spot Repair:

- General: This bid item consists of the spot replacing asphalt and installation of new asphalt and gravel section (including geotextile) in areas that have been indicated for removing and replacing existing section in the project drawings.
- Work Included:
 - All labor, tools, equipment, materials, surface preparation and incidentals necessary to complete the work as specified;
 - Provide all materials required to complete the work in accordance to the mix-design and specifications;
 - Excavation, removal and disposal of existing material;
 - Install gravel base section and woven geotextile or approved equal for support under road section;
 - Tack coat;
 - Loading, haul or other transportation required to place the material;
 - Furnishing, handling, measuring, mixing, manipulation, placing and testing of materials;
 - Hauling and placing the road section and asphalt concrete;

- Provide initial mix-design of the product;
- Areas not meeting minimum specifications and compaction shall be removed and replaced with no additional measurement and payment.
- Areas that existing gravel base is deemed acceptable by the engineer to remain in place shall be compacted in place. Area where existing gravel is deemed unacceptable shall be replaced in accordance with the Gravel Base Repair bid item.
- Measurement: New Asphalt Paving or Spot Repair is measured by the square foot. The quantities measured for payment are the square feet of surface area that have been replaced per specifications. Square footage is determined by field measurement.
- Payment: New Asphalt Paving or Spot repair is paid for at the contract unit bid price per square foot of completed and accepted work.

10. Gravel Lot Grading:

- General: This bid item consists of regrading existing gravel parking areas to a smooth surface free of pot holes and birdbaths. It shall include the excavation, placing, grading, compacting and disposal of excess material encountered within the construction limits necessary to construct the project as noted in the drawings.
- Work Included:
 - All labor, tools, equipment, materials, surface preparation and incidentals necessary to complete the work as specified;
 - Provide all materials required to complete the work in accordance to the mix-design and specifications;
 - Excavation, removal and disposal of existing material;
 - Loading, haul or other transportation required to place the material;
 - Furnishing, handling, measuring, mixing, manipulation, placing and testing of materials;
 - Clearing and grubbing between the construction limits, including haul and disposal of cleared and grubbed material and stump removal;
 - Furnishing and placing water for compaction and dust control;
 - Final grading and cleanup.
 - Areas not meeting minimum specifications and compaction shall be removed and replaced with no additional measurement and payment.
- Measurement: Gravel Regrading is measured by the square foot. The quantities measured for payment are the square feet of surface area that have been regraded per specifications. Square footage is determined by field measurement.
- Payment: Gravel Regrading is paid for at the contract unit bid price per square foot of completed and accepted work.

11. Imported 3/4" Road Mix Gravel:

- General: This bid item consists of imported gravel in unpaved areas that have been indicated for regrading in the project drawings.
- Work Included:
 - All labor, tools, equipment, materials, surface preparation and incidentals necessary to complete the work as specified;
 - Provide all materials required to complete the work in accordance to specifications;
 - Excavation, removal and disposal of existing material;

- Install gravel base section and woven geotextile or approved equal for support under road section;
- Loading, haul or other transportation required to place the material;
- Furnishing, handling, measuring, mixing, manipulation, placing and testing of materials;
- Hauling and placing the road section and asphalt concrete;
- Provide initial gradation of the product;
- Areas not meeting minimum specifications and compaction shall be removed and replaced with no additional measurement and payment.
- Areas that existing gravel base is deemed acceptable by the engineer to remain in place shall be compacted in place. Area where existing gravel is deemed unacceptable shall be replaced in accordance with the Gravel Base Repair bid item.
- Measurement: Imported 3/4" Road Mix Gravel is measured by the cubic yard. Quantities will be determined by truck tickets.
- Payment: Imported 3/4" Road Mix Gravel is paid for at the contract unit bid price per cubic yard of completed and accepted work.

12. Parking Garage Maintenance:

General: This bid item consists of the cleaning, sweeping, and re-painting 4" lines, 24" lines, and pavement markings "as is," and on all floors, of the MSU parking garage.

- Work Included:
 - All labor, tools, equipment, materials, surface preparation and incidentals necessary to complete the work as specified;
 - Furnishing, handling, and placing paint;
 - Hauling and placing the pavement markings;
 - "Blackout paint" or otherwise covering up errors in striping will not be allowed. Errant striping cannot be removed using "blackout paint."
- Measurement: Parking Garage Maintenance is measured by lump sum.
- Payment: Parking Garage Maintenance is paid for at the contract unit bid price of completed and accepted work.

13. Motorcycle Course Striping:

General: This bid item consists of the re-painting of 4" lines, and pavement markings "as is," in Lot 6 as detailed in the project manual.

- Work Included:
 - All labor, tools, equipment, materials, surface preparation and incidentals necessary to complete the work as specified;
 - Furnishing, handling, and placing paint;
 - Hauling and placing the pavement markings;
 - "Blackout paint" or otherwise covering up errors in striping will not be allowed. Errant striping cannot be removed using "blackout paint."
- Measurement: Motorcycle Course Striping is measured by lump sum.
- Payment: Parking Garage Maintenance is paid for at the contract unit bid price of completed and accepted work.

14. Curb Paint Removal (Yellow or Red):

- General: This bid item consists of removing the paint from concrete curb as shown in the construction drawings and as per the Specifications.
- Work Included:
 - All labor, tools, equipment, materials, surface preparation and incidentals necessary to complete the work as specified;
 - Removal of existing paint, stormwater BMPs (as needed), and cleanup of the paint removal;
- Measurement: The installation of the curb striping is measured by the linear foot of curb paint is removed from the top and face of curb. The quantities measured for payment are the linear feet that have been applied per specifications. Linear footage is determined by field measurement.
- Payment: Curb Paint Removal is paid for at the contract unit bid price per linear foot of completed and accepted work.

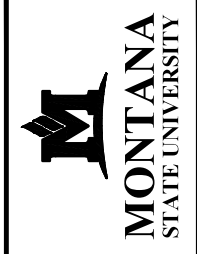
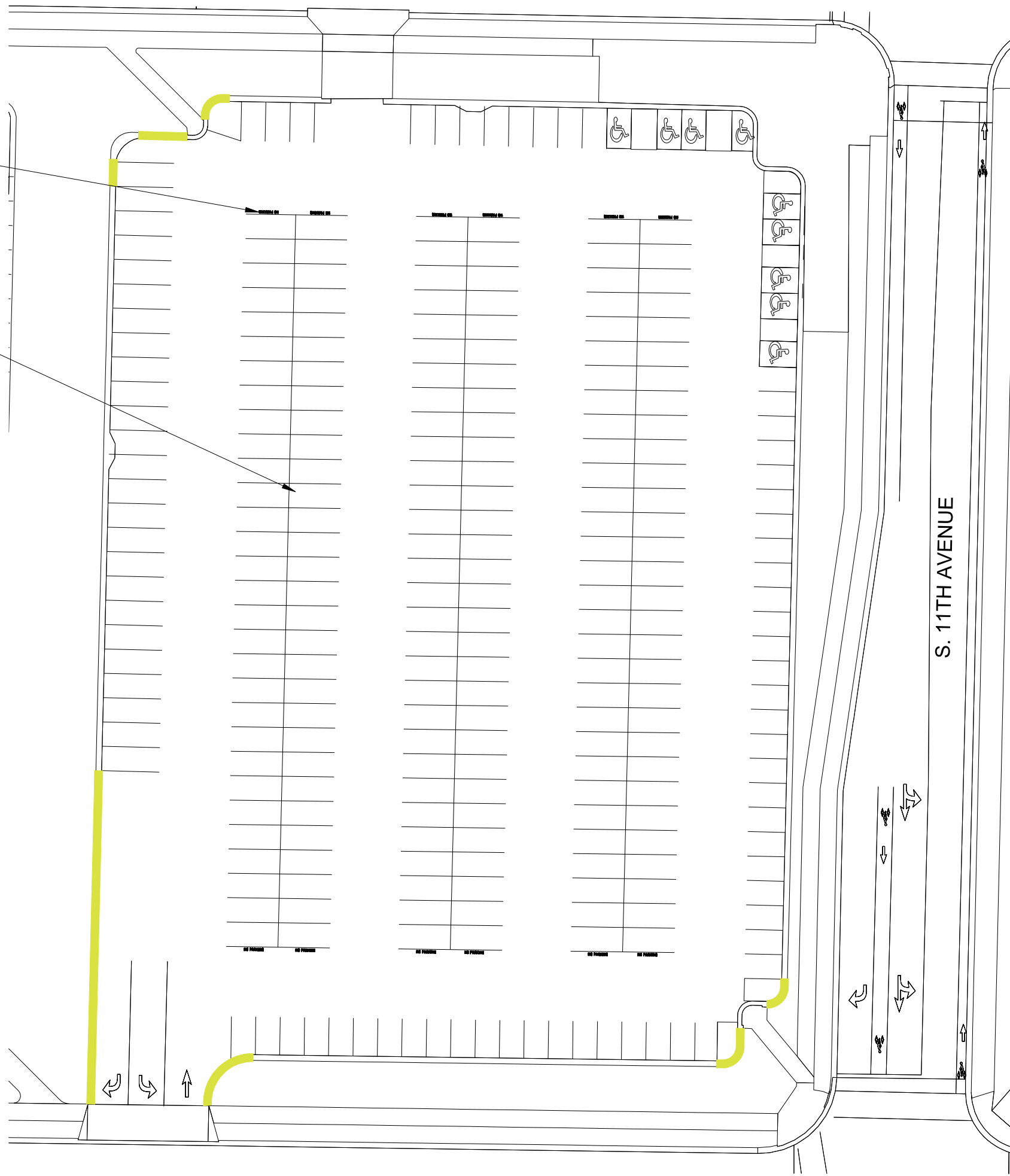
END OF SECTION

L:\1454-MSU\1454-02622_Parking_Maintenance_2022\DWG\Plan_Sets\1454-02622_LOT1_THRU_110.dwg PLOT DATE 2022-05-18 15:58 SAVED DATE 2022-05-18 15:28 USER: jwilliams

4" PAINT STRIPING	5,775 LF
CURB PAINT	213 LF
ASPHALT SPOT REPAIR	SF
24" PAINT	LF
ARROWS/MISC PAVEMENT MARKING	15
LOT AREA	78,655 SF

ADD NEW "NO PARKING" STENCIL AS SHOWN, 8" HIGH

CLEAN, CRACK SEAL & RESTRIPE ENTIRE PARKING LOT AND CURBS WHERE PAINT IS EXISTING. MATCH EXISTING COLOR



PARKING MAINTENANCE 2022

STAHLY ENGINEERING & ASSOCIATES
 PROFESSIONAL ENGINEERS & SURVEYORS
 www.seoeng.com
 2225 MONTANA AVE. STE. 201
 BILLINGS, MT 59101
 Phone: (406) 301-4085
 Fax: (406) 301-4082
 5530 CENTENNIAL DR. HELENA, MT 59601
 Phone: (406) 442-8584
 Fax: (406) 442-8587
 851 BRIDGER DR. STE. 1 BOZEMAN, MT 59715
 Phone: (406) 552-8526
 Fax: (406) 552-8528

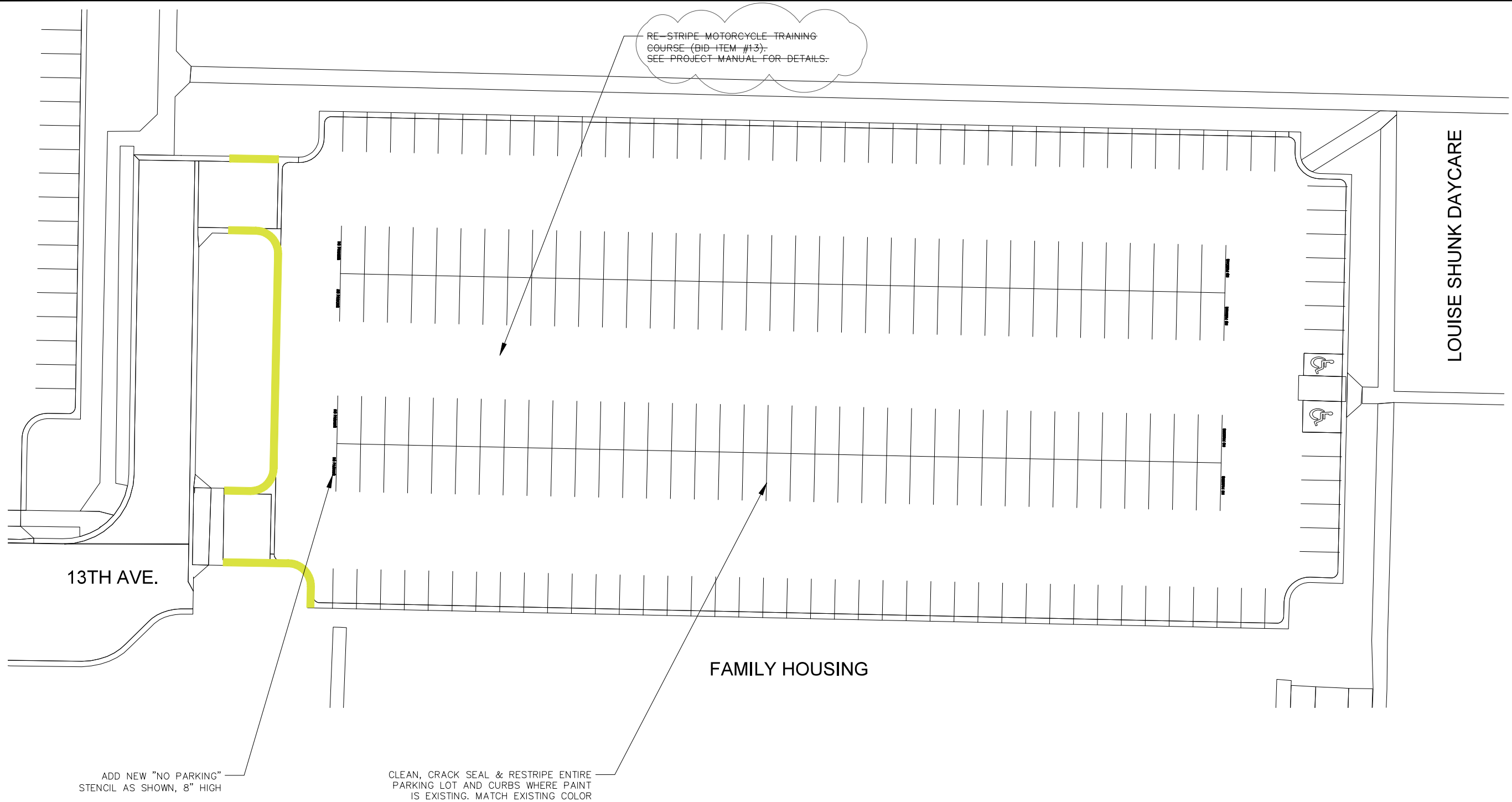
DRAWN BY: ZWL
 REVIEWED BY: ZWL

REV.	DESCRIPTION	DATE
1	90% CD	3/25/22
2		
3		

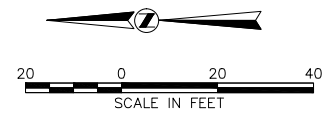
S. HEDGES LOT
 LOT 3
 PPA #22-0010

SHEET
C3

L:\1454-MSU\1454-02622_Parking_Maintenance_2022\DWG\Plan_Sets\1454-02622_LOT1_THRU_110.dwg PLOT DATE 2022-05-18 15:58 SAVED DATE 2022-05-18 15:28 USER: jwilliams



4" PAINT STRIPING	4,865 LF
CURB PAINT	193 LF
ASPHALT SPOT REPAIR	0 SF
24" PAINT	0 LF
ARROWS/MISC	8
PAVEMENT MARKING	
LOT AREA	72,197 SF



PARKING MAINTENANCE 2022



STAHLY ENGINEERING & ASSOCIATES
 PROFESSIONAL ENGINEERS & SURVEYORS
 www.seoeng.com
 2223 MONTANA AVE.
 STE. 201
 BILLINGS, MT 59101
 Phone: (408) 301-4085
 Fax: (408) 301-4082
 3530 CENTENNIAL DR.
 HELENA, MT 59601
 Phone: (408) 442-8584
 Fax: (408) 442-8587
 851 BRIDGER DR. STE. 1
 BOZEMAN, MT 59715
 Phone: (408) 522-8526
 Fax: (408) 522-8528

DRAWN BY: ZWL
 REVIEWED BY: ZWL

REV.	DESCRIPTION	DATE
1	90% CD	3/25/22
2		
3		

S. 12TH ST. LOT
 LOT 4
 PPA #22-0010

SHEET
C4

L:\1454-MSU\1454-02622_Parking_Maintenance_2022\DWG\Plan_Sets\1454-02622_LOT11_THRU_LOT20.dwg PLOT DATE 2022-05-18 15:56 SAVED DATE 2022-05-18 15:22 USER: jwilliams

4" PAINT STRIPING	4,238 LF
CURB PAINT	477 LF
ASPHALT SPOT REPAIR	SF
24" PAINT	LF
ARROWS/MISC	24
PAVEMENT MARKING	
LOT AREA	76,414 SF

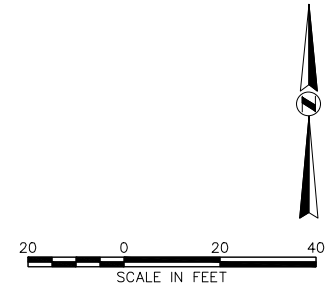
CLEAN, CRACK SEAL & RESTRIPE ENTIRE PARKING LOT AND CURBS WHERE PAINT IS EXISTING. MATCH EXISTING COLOR

ADD NEW "NO PARKING" STENCIL AS SHOWN, 8" HIGH

CLEAR STORMWATER OUTFALL

S. 7TH AVENUE

UNIVERSITY POLICE



PARKING MAINTENANCE 2022



STAHLY ENGINEERING & ASSOCIATES
 PROFESSIONAL ENGINEERS & SURVEYORS
 www.seoeng.com
 2225 MONTANA AVE. STE. 201
 BILLINGS, MT 59101
 Phone: (409) 301-4085
 Fax: (409) 301-4082
 5530 CENTENNIAL DR. HELENA, MT 59601
 Phone: (409) 442-8584
 Fax: (409) 442-8587
 851 BRIDGER DR. STE. 1 BOZEMAN, MT 59715
 Phone: (409) 522-8526
 Fax: (409) 522-8528

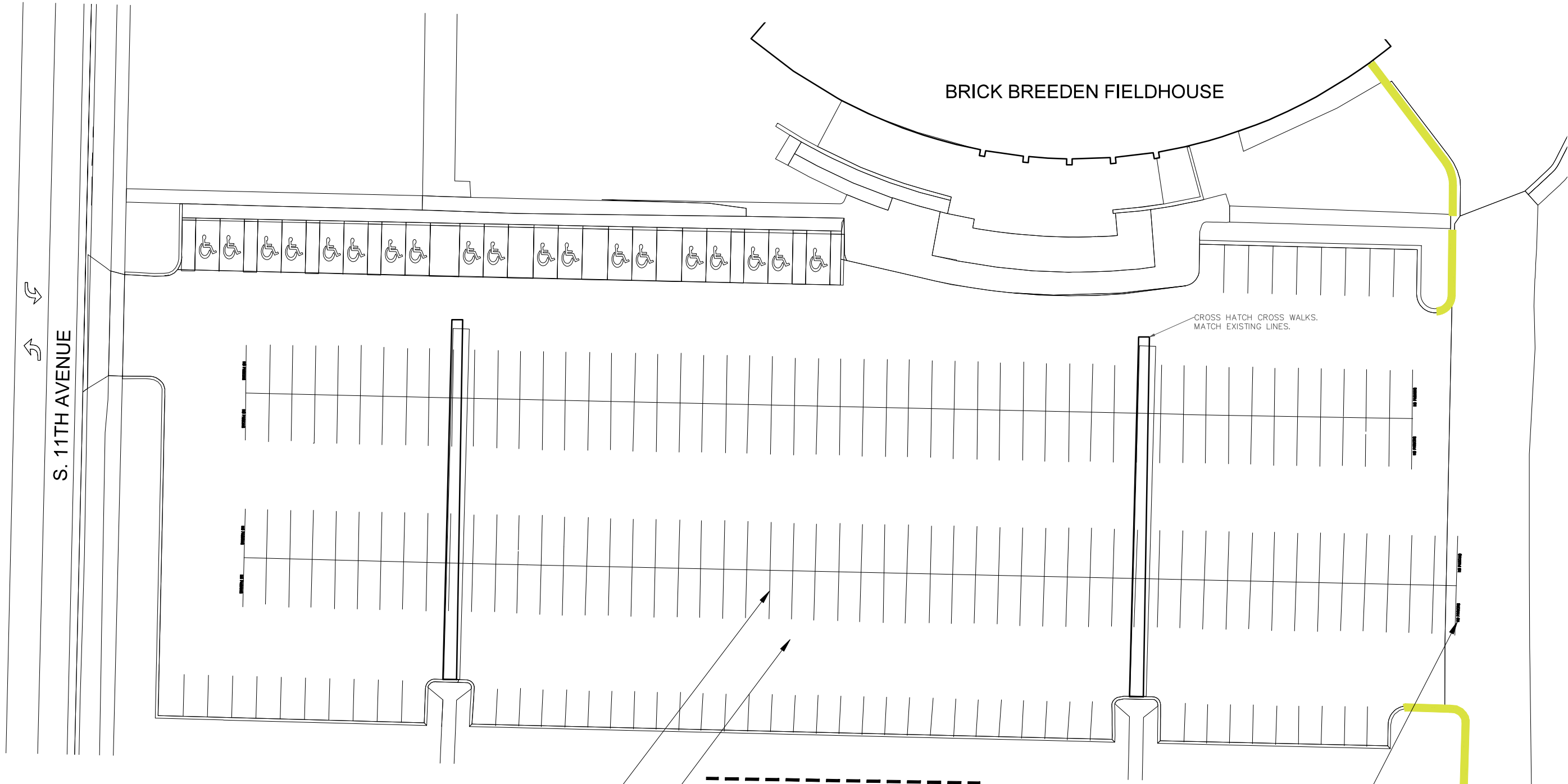
DRAWN BY: ZWL
 REVIEWED BY: ZWL

REV.	DESCRIPTION	DATE
1	90% CD	3/25/22
2		
3		

HUFFMAN LOT
 LOT 13
 PPA #22-0010

SHEET
C13

L:\1454-MSU\1-02622_Parking_Maintenance_2022\DWG\Plan_Sets\1454-02622_LOT11_THRU_LOT20.dwg PLOT DATE 2022-05-18 15:56 SAVED DATE 2022-05-18 15:22 USER: jwilliams



CLEAN, CRACK SEAL & RESTRIPE ENTIRE PARKING LOT AND CURBS WHERE PAINT IS EXISTING. MATCH EXISTING COLOR

ALTERNATE 2:
CHIP SEAL LOT ENTIRE LOT,
COVER PRESSED CHIPS
WITH A FOG SEAL

MATCH LINE SEE SHEET C15S

ADD NEW "NO PARKING"
STENCIL AS SHOWN, 8" HIGH

4" PAINT STRIPING	6,569 LF
CURB PAINT	151 LF
ASPHALT SPOT REPAIR	SF
24" PAINT	LF
ARROWS/MISC	8
PAVEMENT MARKING	
LOT AREA	85,197 SF



PARKING MAINTENANCE 2022



STAHLY ENGINEERING & ASSOCIATES
PROFESSIONAL ENGINEERS & SURVEYORS
www.seoeng.com
2223 MONTANA AVE.
STE. 201
BILLINGS, MT 59101
Phone: (409) 301-4085
Fax: (409) 301-4082
3530 CENTENNIAL DR.
HELENA, MT 59601
Phone: (409) 442-8584
Fax: (409) 442-8587
851 BRIDGER DR. STE. 1
BOZEMAN, MT 59715
Phone: (409) 522-8526
Fax: (409) 522-8528

DRAWN BY: ZWL

REVIEWED BY: ZWL

REV.	DESCRIPTION	DATE
1	90% CD	3/25/22
2		
3		

S. FIELDHOUSE LOT (NORTH)

LOT 15

PPA #22-0010

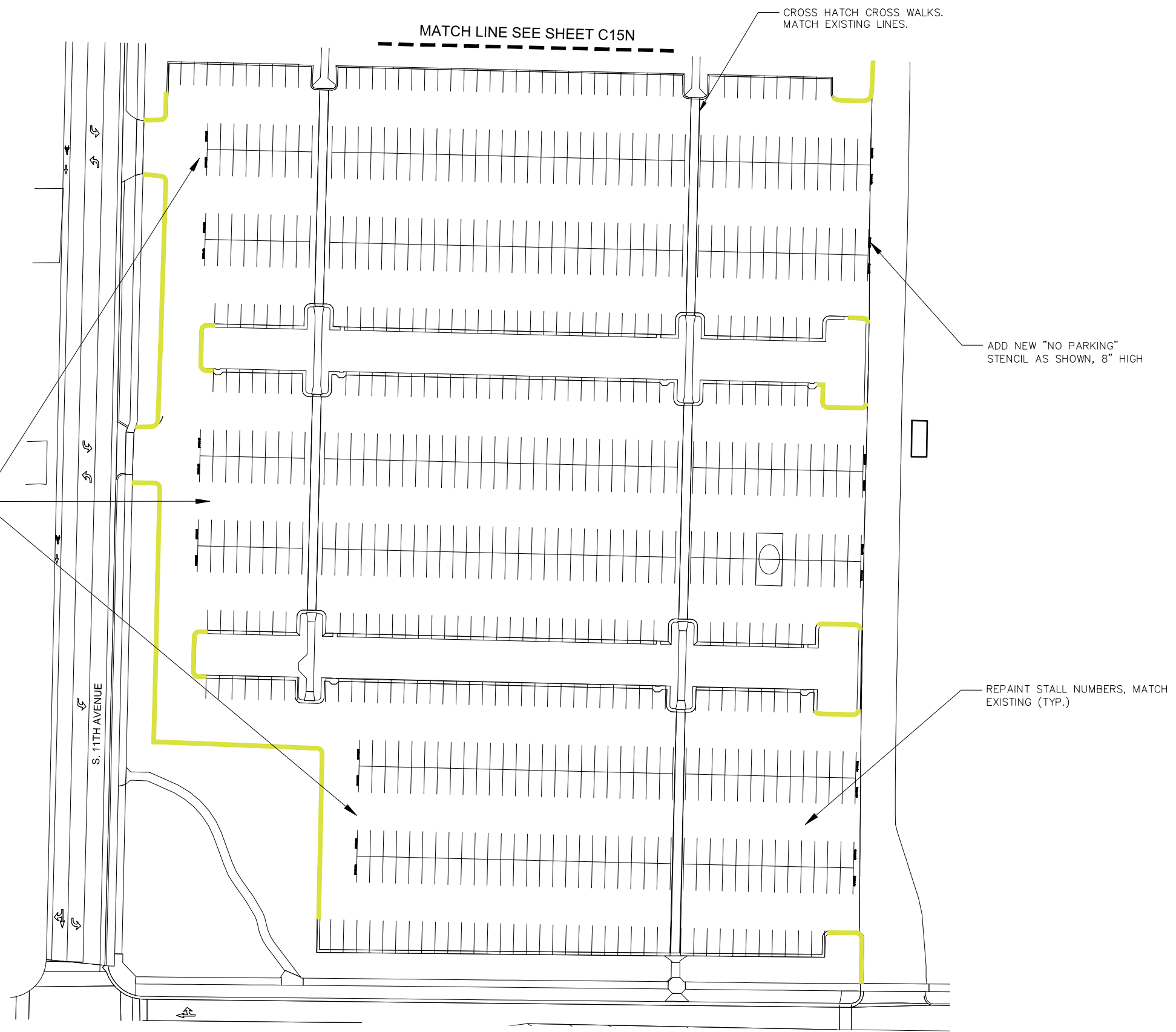
SHEET

C15N

2-14-22

L:\1454-MSU\1454-02622_Parking_Maintenance_2022\DWG\Plan_Sets\1454-02622_LOT11_THRU_LOT20.dwg PLOT DATE 2022-05-18 15:58 SAVED DATE 2022-05-18 15:22 USER: jwilliams

4" PAINT STRIPING	19,105 LF
CURB PAINT	992 LF
ASPHALT SPOT REPAIR	SF
24" PAINT	LF
ARROWS/MISC	24
PAVEMENT MARKING	243,102 SF
LOT AREA	



PARKING MAINTENANCE 2022

STAHLY ENGINEERING & ASSOCIATES
 PROFESSIONAL ENGINEERS & SURVEYORS
 www.seoeng.com
 2225 MONTANA AVE. STE. 201
 BILLINGS, MT 59101
 Phone: (408) 301-4085
 Fax: (408) 301-4082
 5530 CENTENNIAL DR. HELENA, MT 59601
 Phone: (408) 442-8584
 Fax: (408) 442-8587
 851 BRIDGER DR. STE. 1 BOZEMAN, MT 59715
 Phone: (408) 522-8526
 Fax: (408) 522-8528

DRAWN BY: ZWL
 REVIEWED BY: ZWL

REV.	DESCRIPTION	DATE
1	90% CD	3/25/22
2		
3		

S. FIELDHOUSE LOT (SOUTH)
 LOT 15
 PPA #22-0010

SHEET
C15S

L:\1454-MSU\1454-02622_Parking_Maintenance_2022\DWG\Plan_Sets\1454-02622_LOT11_THRU_LOT20.dwg PLOT DATE 2022-05-18 15:56 SAVED DATE 2022-05-18 15:22 USER: jwilliams

LOT AREA	33,803 SF
4" PAINT STRIPING	LF
CURB PAINT	LF
CRACK SEAL	
ASPHALT SPOT REPAIR	SF

IMPORT 1 1/2" 3/4" MINUS ROAD MIX MATERIAL.
PLACE, GRADE & COMPACT ENTIRE GRAVEL LOT,
LEAVING A SMOOTH SURFACE THAT PERPETUATES
EXISTING DRAINAGE.

MATCH LINE SEE SHEET C13

W. KAGY BOULEVARD

S. 11TH AVENUE

NOT IN CONTRACT

NOT IN CONTRACT



PARKING MAINTENANCE 2022



STAHLY
ENGINEERING
& ASSOCIATES
PROFESSIONAL
ENGINEERS &
SURVEYORS
www.seoeng.com
2223 MONTANA AVE.
STE. 201
BILLINGS, MT 59101
Phone: (409) 301-4085
Fax: (409) 301-4082
5530 CENTENNIAL DR.
HELENA, MT 59601
Phone: (409) 442-8584
Fax: (409) 442-8587
851 BRIDGER DR. STE. 1
BOZEMAN, MT 59715
Phone: (409) 522-8526
Fax: (409) 522-8528

DRAWN BY: ZWL
REVIEWED BY: ZWL

REV.	DESCRIPTION	DATE
1	90% CD	3/25/22
2		
3		

W. STADIUM
LOT (NORTH)

LOT 20

PPA #22-0010

SHEET

C20N

2-14-22

L:\1454-MSU\1454-02622_Parking_Maintenance_2022\DWG\Plan_Sets\1454-02622_LOT11_THRU_LOT20.dwg PLOT DATE 2022-05-18 15:56 SAVED DATE 2022-05-18 15:22 USER: jwilliams

S. 11TH AVENUE

MATCH LINE SEE SHEET C12

NOT IN CONTRACT

IMPORT 1 1/2" - 3/4" MINUS ROAD MIX MATERIAL.
PLACE, GRADE & COMPACT ENTIRE GRAVEL LOT,
LEAVING A SMOOTH SURFACE THAT PERPETUATES
EXISTING DRAINAGE.

BOBCAT STADIUM

REMOVE AND REPLACE
PAVEMENT SECTION
(APPROX. 15'x100')

WEST STADIUM LOT.
CLEAN, ROUT CRACK
SEAL, AND SEAL COAT
ENTIRE PAVED AREA

NOT IN CONTRACT

LOT AREA	42,023 SF
4" PAINT STRIPING	LF
CURB PAINT	LF
CRACK SEAL	
ASPHALT SPOT REPAIR	1500 SF



PARKING MAINTENANCE 2022



STAHLY
ENGINEERING
& ASSOCIATES
PROFESSIONAL
ENGINEERS &
SURVEYORS
www.seoeng.com
2223 MONTANA AVE.
STE. 201
BILLINGS, MT 59101
Phone: (409) 301-4085
Fax: (409) 301-4082
3530 CENTENNIAL DR.
HELENA, MT 59601
Phone: (409) 442-8584
Fax: (409) 442-8587
851 BRIDGER DR. STE. 1
BOZEMAN, MT 59715
Phone: (409) 522-8526
Fax: (409) 522-8528

DRAWN BY: ZWL
REVIEWED BY: ZWL

REV.	DESCRIPTION	DATE
1	90% CD	3/25/22
2		
3		

W. STADIUM LOT (SOUTH)

LOT 20

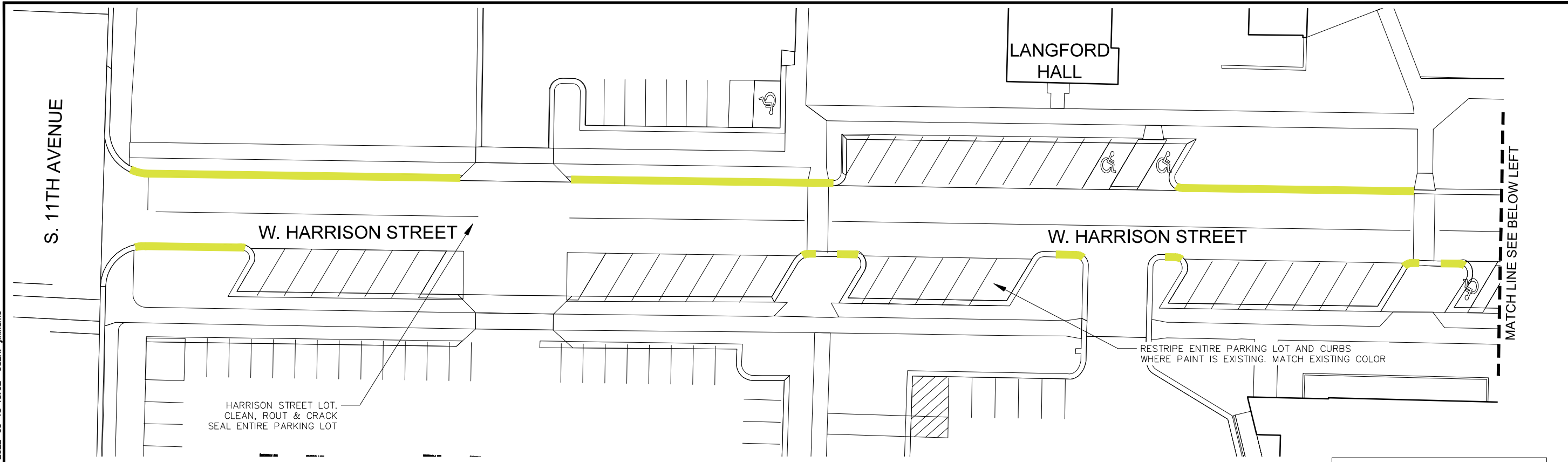
PPA #22-0010

SHEET

C20S

2-14-22

L:\1454-MSU\1454-02622_Parking_Maintenance_2022\DWG\Plan_Sets\1454-02622_LOT21_THRU_LOT27.dwg PLOT DATE 2022-05-18 15:52 USER: jwilliams

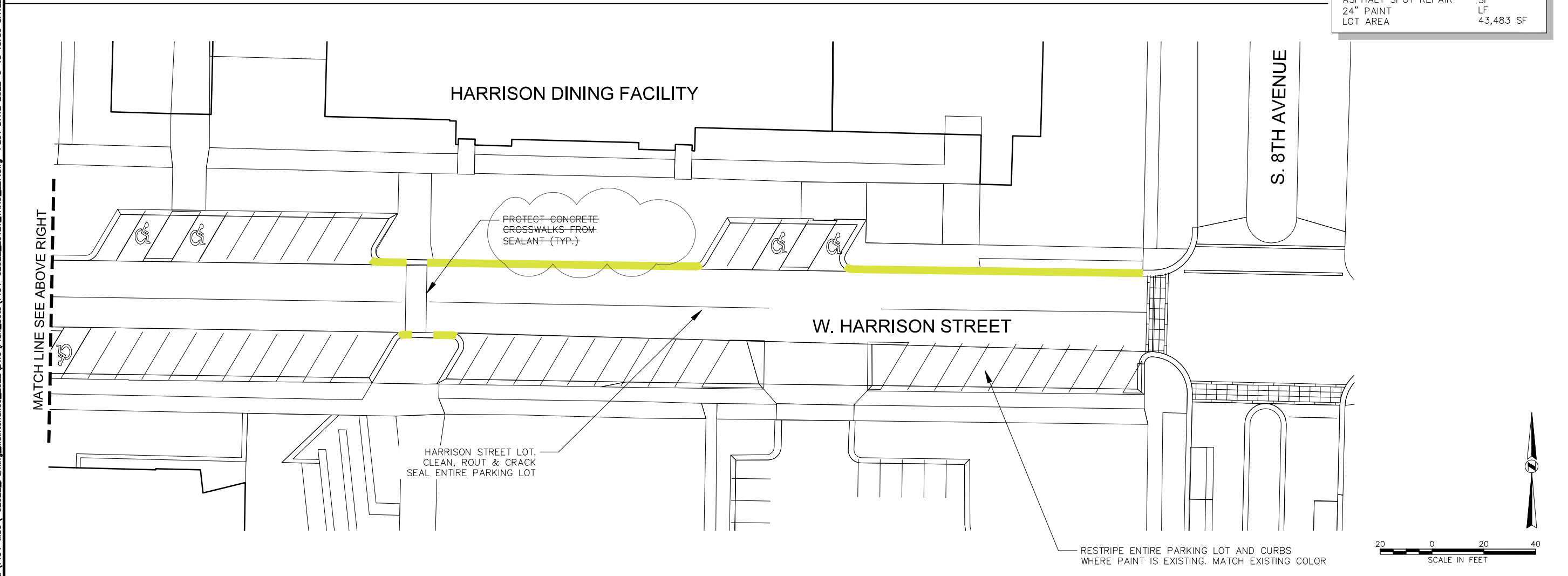


HARRISON STREET LOT.
CLEAN, ROUT & CRACK
SEAL ENTIRE PARKING LOT

RESTRIPE ENTIRE PARKING LOT AND CURBS
WHERE PAINT IS EXISTING. MATCH EXISTING COLOR

MATCH LINE SEE BELOW LEFT

4" PAINT STRIPING	3,057 LF
CURB PAINT	657 LF
ASPHALT SPOT REPAIR	SF
24" PAINT	LF
LOT AREA	43,483 SF



HARRISON DINING FACILITY

PROTECT CONCRETE
CROSSWALKS FROM
SEALANT (TYP.)

HARRISON STREET LOT.
CLEAN, ROUT & CRACK
SEAL ENTIRE PARKING LOT

RESTRIPE ENTIRE PARKING LOT AND CURBS
WHERE PAINT IS EXISTING. MATCH EXISTING COLOR

MATCH LINE SEE ABOVE RIGHT



PARKING MAINTENANCE 2022



STAHLY ENGINEERING & ASSOCIATES
PROFESSIONAL ENGINEERS & SURVEYORS
www.seoeng.com
2225 MONTANA AVE.
STE. 201
BILLINGS, MT 59101
Phone: (409) 301-4085
Fax: (409) 301-4082
3530 CENTENNIAL DR.
HELENA, MT 59601
Phone: (409) 442-8594
Fax: (409) 442-8587
851 BRIDGER DR. STE. 1
BOZEMAN, MT 59715
Phone: (409) 522-8526
Fax: (409) 522-8528

DRAWN BY: ZWL
REVIEWED BY: ZWL

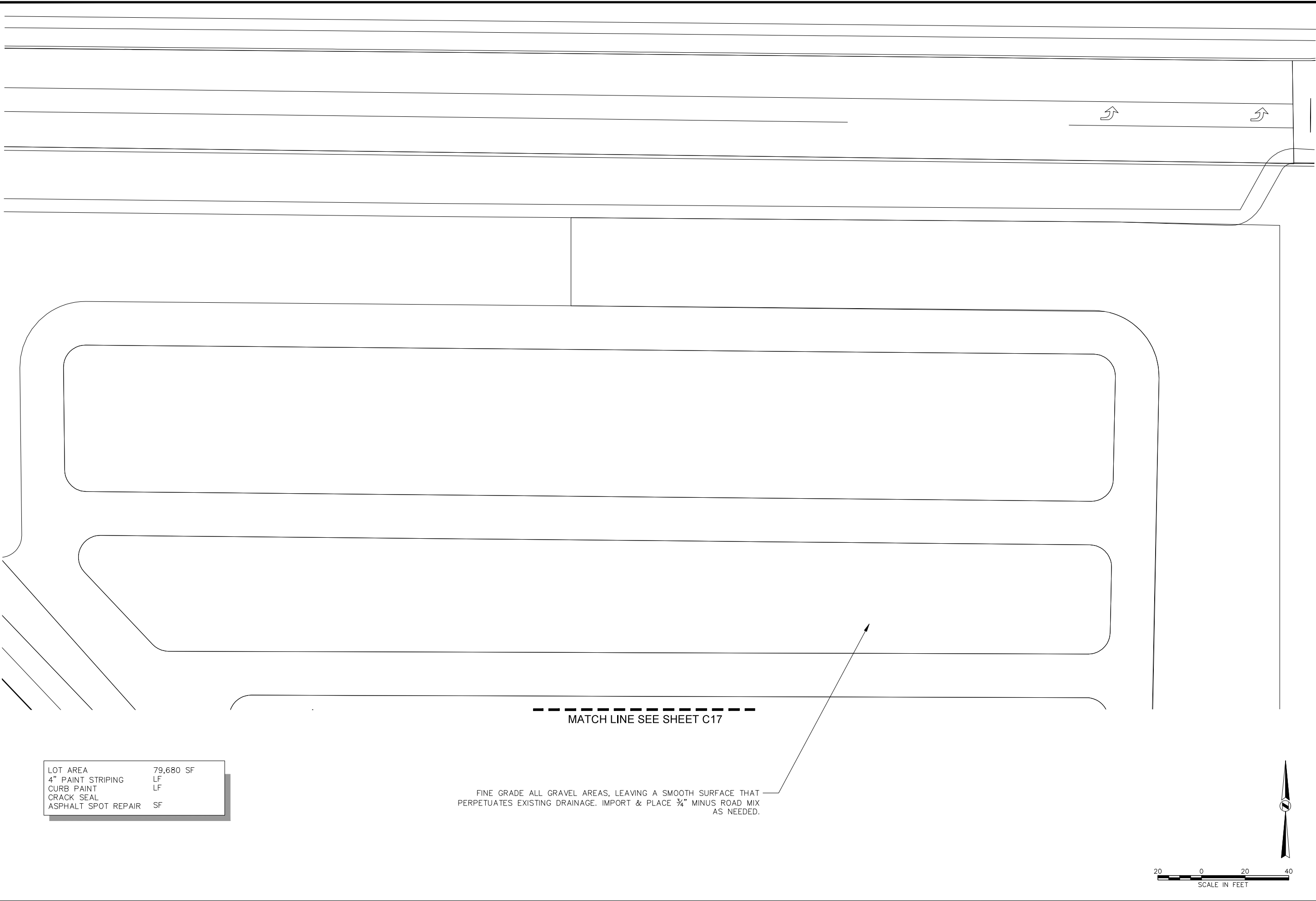
REV.	DESCRIPTION	DATE
1	90% CD	3/25/22
2		
3		

HARRISON ST.
LOT
LOT 23
PPA #22-0010

SHEET
C23

2-14-22

L:\1454-MSU\1454-02622_Parking_Maintenance_2022\DWG\Plan_Sets\1454-02622_LOT21_THRU_L27.dwg PLOT DATE 2022-05-18 15:59 SAVED DATE 2022-05-18 15:52 USER: jwilliams



LOT AREA	79,680 SF
4" PAINT STRIPING	LF
CURB PAINT	LF
CRACK SEAL	
ASPHALT SPOT REPAIR	SF

--- MATCH LINE SEE SHEET C17 ---

FINE GRADE ALL GRAVEL AREAS, LEAVING A SMOOTH SURFACE THAT PERPETUATES EXISTING DRAINAGE. IMPORT & PLACE 3/4" MINUS ROAD MIX AS NEEDED.



PARKING MAINTENANCE 2022

STAHLY ENGINEERING & ASSOCIATES
 PROFESSIONAL ENGINEERS & SURVEYORS
 www.seoeng.com
 2223 MONTANA AVE.
 STE. 201
 BILLINGS, MT 59101
 Phone: (409) 301-4085
 Fax: (409) 301-4082
 5530 CENTENNIAL DR.
 HELENA, MT 59601
 Phone: (409) 442-8584
 Fax: (409) 442-8587
 851 BRIDGER DR. STE. 1
 BOZEMAN, MT 59715
 Phone: (409) 522-8526
 Fax: (409) 522-8528

DRAWN BY: ZWL
 REVIEWED BY: ZWL

REV.	DESCRIPTION	DATE
1	90% CD	3/25/22
2		
3		

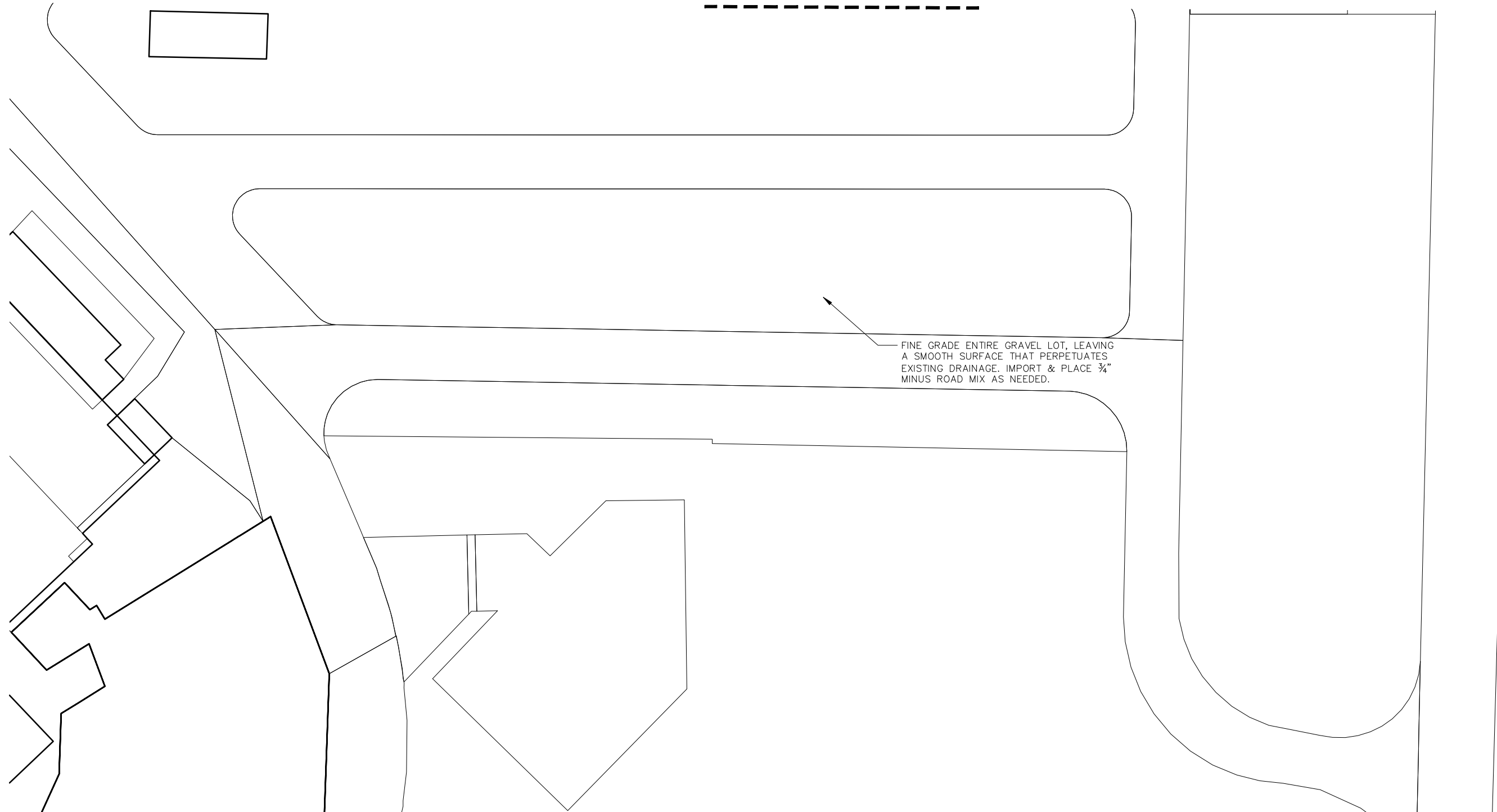
STADIUM EAST LOT (NORTH)
 LOT 25
 PPA #22-0010

SHEET
C25N

2-14-22

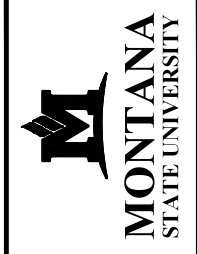
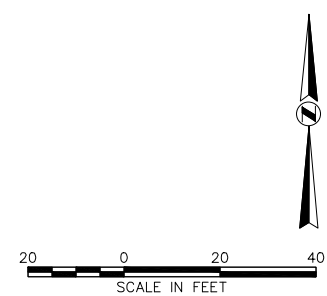
L:\1454-MSU\1454-02622_Parking_Maintenance_2022\DWG\Plan_Sets\1454-02622_LOT21_THRU_LOT27.dwg PLOT DATE 2022-05-18 15:52 USER: jwilliams

MATCH LINE SEE SHEET C16



FINE GRADE ENTIRE GRAVEL LOT, LEAVING A SMOOTH SURFACE THAT PERPETUATES EXISTING DRAINAGE. IMPORT & PLACE 3/4" MINUS ROAD MIX AS NEEDED.

LOT AREA	59,665 SF
4" PAINT STRIPING	LF
CURB PAINT	LF
CRACK SEAL	
ASPHALT SPOT REPAIR	SF



PARKING MAINTENANCE 2022



STAHLY ENGINEERING & ASSOCIATES
PROFESSIONAL ENGINEERS & SURVEYORS
www.seoeng.com

2225 MONTANA AVE.
STE. 201
BILLINGS, MT 59101
Phone: (409) 301-4085
Fax: (409) 301-4082

5530 CENTENNIAL DR.
HELENA, MT 59601
Phone: (409) 442-8584
Fax: (409) 442-8587

851 BRIDGER DR. STE. 1
BOZEMAN, MT 59715
Phone: (409) 522-8526
Fax: (409) 522-8528

DRAWN BY: ZWL
REVIEWED BY: ZWL

REV.	DESCRIPTION	DATE
1	90% CD	3/25/22
2		
3		

STADIUM EAST LOT (SOUTH)
LOT 25
PPA #22-0010

SHEET
C25S