

MONTANA STATE UNIVERSITY

BOZEMAN · MONTANA



Among the top 3 percent of colleges and universities in the nation for research expenditures

A major research university with a unique focus on undergraduate research and creative projects

The only university of its kind with unparalleled access to outdoor adventure and discovery

FACTS AND STATS

Basic facts { Fall 2017 }

ENROLLMENT
16,703

UNDERGRAD
14,725

GRADUATE
1,978

FALL 2017 FRESHMEN CLASS
50% In-State | 50% Out-of-State

Average HS GPA **3.53**
Average ACT **25.2**
Average SAT **1213**

ACADEMIC PROGRAMS
225

options, including majors, options within majors, minors & special programs

BOZEMAN AREA FACTS

Population **104,000**

Average Snowfall **86"**

TOP TEN HOME STATES

Montana	9,569	Idaho	390
Washington	1,212	Oregon	359
California	1,033	Alaska	274
Colorado	950	Illinois	214
Minnesota	495	Wyoming	208

TOP TEN MONTANA HOME COUNTIES

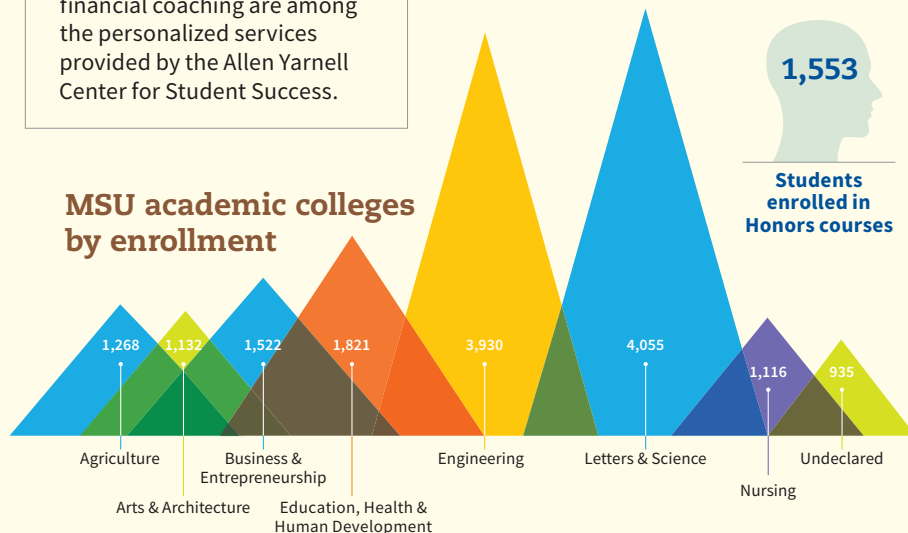
Gallatin	2,359	Cascade	586
Yellowstone	1,173	Ravalli	270
Flathead	704	Park	263
Missoula	633	Silver Bow	154
Lewis & Clark	607	Jefferson	132

INTERNATIONAL STUDENTS 673 from 78 countries

Student support

Advising, career coaching and financial coaching are among the personalized services provided by the Allen Yarnell Center for Student Success.

MSU academic colleges by enrollment



Top scholars

In the past seven years, MSU students have received the following: **3 Rhodes Scholarships**, **3 Truman Scholarships**, **31 National Science Foundation Graduate Research Fellowships**, **6 Udall Scholarships**, **6 Boren Scholarships**, **2 Gates-Cambridge Scholarships** (including the first Native American student to receive this award), **14 Fulbright Grants** and a Marshall, Mitchell, Schwarzman Scholarship and the Pearson Prize for Higher Education.

MSU students earned 21 Goldwater Scholarships during the past seven years. Montana State University is tied for 10th nationally for number of Goldwater Scholarship recipients. As of 2017, 68 MSU students have received the Barry M. Goldwater Scholarship, the nation's premier scholarship for undergraduates studying math, natural sciences and engineering. MSU's rank puts it just above Yale. Other schools on the top of the list include: Stanford, Harvard and MIT.

Leader in research



MSU is the largest research entity in Montana. Research expenditures exceeded \$130 million in the past year.

Successful grads

MSU grads consistently outperform their peers on professional exams and boards, with pass rates that exceed the national average in their respective areas of study.

think outside™



⊕ Ski areas within an hour of campus

BRIDGER BOWL	20 MINUTES FROM CAMPUS	2,700' VERTICAL DROP	350" ANNUAL SNOWFALL
BIG SKY RESORT	60 MINUTES FROM CAMPUS	4,350' VERTICAL DROP	400+" ANNUAL SNOWFALL



⊕ Best place

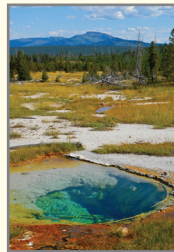


Money magazine named Bozeman No. 10 on its 2017 Best Places to Live, calling it "A paradise for outdoor enthusiasts...with a charming downtown area and a surprisingly vibrant cultural scene, thanks to the presence of Montana State University."

⊕ Bozeman trails

80 miles

Bozeman's ever-expanding Main Street to the Mountains trail system links the city to the surrounding mountains.



NO. 1 DAY TRIP—89 MILES

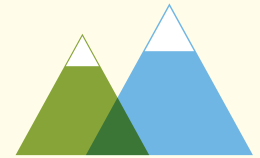
FUN FACTS



THREE BIG RIVERS

Famous for whitewater adventure, fly fishing, history & Hollywood films

Gallatin · Madison and Yellowstone rivers



MOUNTAIN RANGES VISIBLE FROM BOZEMAN and highest visible peak

Big Belt Mountains	9,504'
Bridger Range	9,665'
Gallatin Range	10,154'
Spanish Peaks	11,015'
Tobacco Root Mts.	10,604'

⊕ Intramurals

13 sports

MSU has teams open to any students in softball, soccer, flag football, basketball, tennis, badminton, frisbee golf, racquetball, ping pong, dodgeball, ultimate frisbee and volleyball.

⊕ Student clubs

250+ clubs & organizations

MSU students can participate in clubs, programs, events, services and activities such as student government, student organizations and community service.



BOBCAT TEAMS

- Alpine Skiing ■■
- Basketball ■■
- Cross Country ■■
- Football ●
- Golf ■
- Nordic Skiing ■■
- Rodeo (NIRA) ■■
- Spirit Squad ■■
- Tennis ■■
- Track & Field ■■
- Volleyball ■

● Men's ■ Women's

⊕ Direct flights

Direct flights from Bozeman Yellowstone International Airport, Montana's top airport

- Atlanta
- Chicago
- Dallas/Ft. Worth
- Denver
- Houston
- Las Vegas
- Los Angeles
- Minneapolis
- New York
- Phoenix
- Portland
- Salt Lake City
- San Francisco
- Seattle

MONTANA'S LARGEST AIRPORT WITH SIX AIRLINES
—NO. 1—
IN MONTANA



Experience a 360° tour of our beautiful campus and building interiors. montana.edu/tour

Visit montana.edu to learn more about MSU.