

Quick Start Tutorial for the database driven version of RDFinancial for Montana.

By Duane Griffith, Extension Farm Management Specialist, Montana State University,
griffith@montana.edu, 406-994-2580.

This tutorial is a quick start guide for the database version of the RDFinancial program. Some version of RDFinancial contain a fixed crop mix (crop rotation) used as the example. While these versions allow the user to enter a different crop mix that more closely matches their own operation, there is no database of crop budgets to help with that process. This version has a database of crop budgets to the user get started using RDFinancial.

You may have gotten a copy of the RDFinancial program on a CD or downloaded it from the web. In either instance, the process of starting and running the program is the same. Make sure you have copied the program onto your hard disk in a location where it is likely to stay. Once you have saved the program in the desired location, navigate to that location with Windows Explorer, not Internet Explorer (IE). The RDFinancial program will have a name something like "RDFinancial...swf." The swf extension on the file means it is a Flash file. These files will run in Internet Explorer. To open and run an RDFinancial...swf file, you can double click on the file name and it may open automatically (if your computer is set up to open Flash files in IE). If your computer is not set up to run Flash files in your web browser, it may ask you what program you want to use to run the Flash file. See the steps outlined below. The latest version of RDFinancial can be downloaded from the web at:

<http://www.montana.edu/softwaredownloads/financialmgtdownloads.html>

Outline of steps to run RDFinancial:

Step 1: Save an RDFinancial file to a location of your choice on your hard drive.

Step 2: Use Windows Explorer to navigate to the location where RDFinancial was saved and double click on the file name. The file will most likely be a Flash file with an swf file extension. Your computer may be set to hide the file extensions, so you may not see the swf. For educators, there are also PowerPoint versions of this file available which can be built in to a PowerPoint presentation. Figure 1 shows the first screen you should get after double clicking on the file name.

Figure 1. Initial Screen when opening RDFinancial in Internet Explorer (IE).

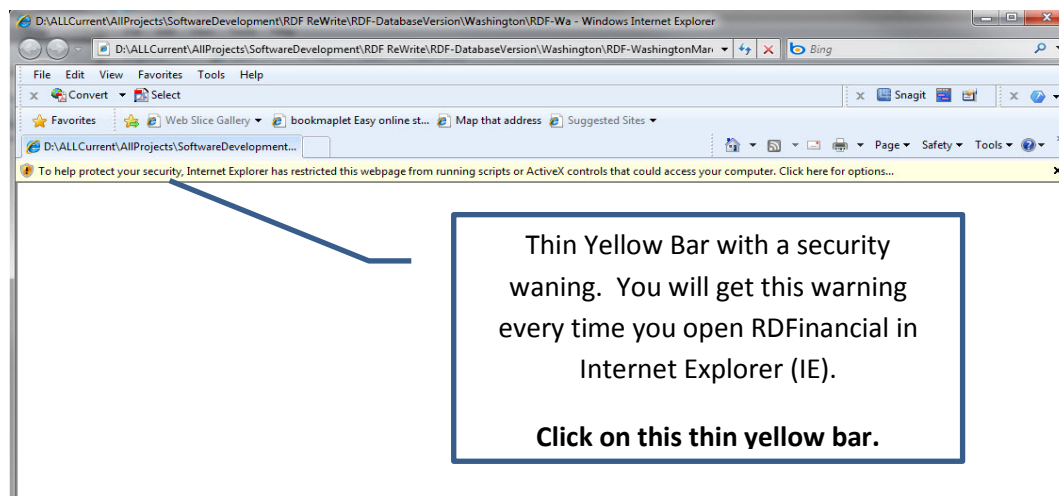


Figure 2 shows the second screen which asks the user to click Yes or No to allow ActiveX controls. **You must click Yes** to allow IE to use the ActiveX controls built in to the RDFinancial Flash file.

Figure 2. Opening RDFinancial in IE, second screen security warning.

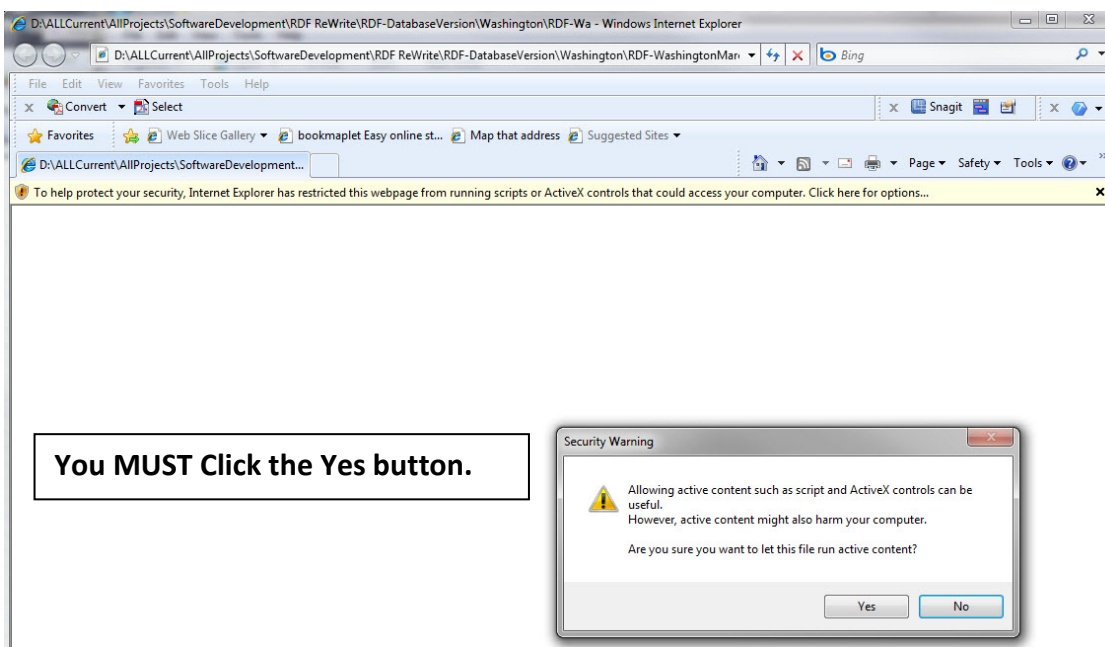


Figure 3. Initial Screen of RDFinancial running in Internet Explorer.

Step 3: Take some time to read the information on this screen and how you interact with this software.

After you have read the information on this screen, click on the Enter Data tab at the top of the screen.

Figure 4 is displayed.

This tab allows the user to enter or change most of the information used by RDFinancial.

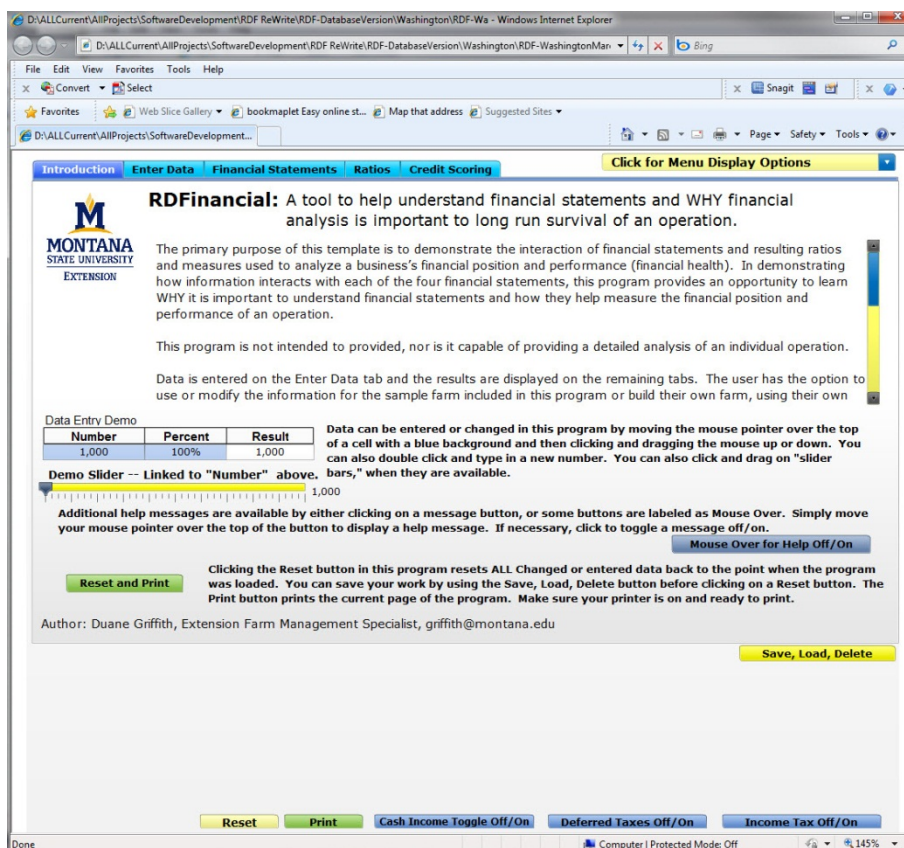


Figure 4. Initial data entry screen for RDFinancial.

The screenshot shows a web browser window titled "D:\ALLCurrent\AllProjects\SoftwareDevelopment\RDF ReWrite\RDF-DatabaseVersion\Montana\RDFinanci - Windows Internet Explorer". The address bar shows the file path. The browser window displays the RDFinancial application interface.

The application has a top navigation bar with tabs: "Introduction", "Enter Data", "Financial Statements", "Ratios", and "Credit Scoring". A yellow button "Click for Menu Display Options" is on the right.

The main content area is divided into several sections:

- #_State Abrv-Description-Area/Region-TillageSys-Irr/Dry**: A header for the state and crop selection.
- Crops Available**: A list of crops with a scroll bar. The list includes:
 - 0_MT-Default_Barley-Spring-State-NT-D
 - 1_MT-Default_HRS-State-NT-D
 - 2_MT-Default_Grass Hay-State-NS-D
 - 3_MT-Default_SumFal-State-NT-D
 - 4_MT-Barley-Malt-State-NS-I
 Below the list are "Add Crop" and "Remove Crop" buttons.
- Crops Selected**: A large empty box for displaying selected crops. A hand cursor is visible over the box. Below it is a button "Click to Update Your Crop Mix Below".
- Legend**: A list of abbreviations:
 - DC = Double Crop
 - CT = Conventional Till
 - NT = No Till
 - RT = Reduced Till
 - HM = High Moisture
 - G = Grain
- Input Data Menu**: A vertical list of buttons:
 - Select Crop Mix
 - Edit Crop Expenses
 - Livestock Revenue
 - Livestock Expenses
 - Taxes & Insurance
 - Assets & Liabilities
 - Misc. & Overhead

Below these sections is a table with 14 columns: "Barley-Dry", "DNS", "Hay-Grass", "SumFal", "Unused", "Unused", "Unused", "Unused", "Unused", "Unused", "Unused", "Unused", "Unused", "Unused". The table has 14 rows of data entry fields.

At the bottom right is a yellow button "Save, Load, Delete". At the bottom left are buttons "Reset", "Print", "Cash Income Toggle Off/On", "Deferred Taxes Off/On", and "Income Tax Off/On".

Step 4: The initial data entry screen shows the information necessary to select a crop mix. The user must add the crops they wish to select for their example farm/ranch operation. This version of the program provides a database of crops to select from and each crop in the database contains information about income and expenses for that particular crop. ***Make sure you change both the income and expense values to suite your particular situation.*** The program also has a "default" case farm example built in.

Step 5: The only thing needed to make this case farm example active is to select the crop budgets assigned to this case farm. The crops selected for the built in case farm are listed first in the "Crops Available" window as #_MT_Default..., Figure 4. To "load these crops," click on a file name to highlight the crop name and then click on the "Add Crop" button. The crop name in the Crops Available window will move to the "Crops Selected" window. See Figures 5 and 6.

Figure 5. Highlighted crop budget in the Crops Available window.

Introduction **Enter Data** **Financial Statements** **Ratios** **Credit Scoring** [Click for Menu Display Options](#)

#_State ABrv-Description-Area/Region-TillageSys-Irr/Dry

Crops Available

0_MT-Default_Barley-Spring-State-NT-D
 1_MT-Default_HRS-State-NT-D
 2_MT-Default_Grass Hay-State-NS-D
 3_MT-Default_SumFal-State-NT-D
 4_MT-Barley-Malt-State-NS-I

Crops Selected

DC = Double Crop
 CT = Conventional Till
 NT = No Till
 RT = Reduced Till
 HM = High Moisture
 G = Grain

Input Data Menu
[Select Crop Mix](#)
[Edit Crop Expenses](#)
[Livestock Revenue](#)
[Livestock Expenses](#)
[Taxes & Insurance](#)
[Assets & Liabilities](#)
[Misc. & Overhead](#)

[Add Crop](#) [Remove Crop](#)

[Click to Update Your Crop Mix Below](#)

	Barley-Dry	DNS	Hay-Grass	SumFal	Unused	Unused	Unused	Unused	Unused	Unused	Unused	Unused	Unused
Yield Per Unit													
Planted Acres Per Enterprise													
Sales Price Per Unit													
Percent Crop Used on Farm													
Percent Acres Leased													
Landlord Crop Share Lease Percent													
Base Acreage Per Enterprise													
Percent of Base Leased from Others													
Direct Payment Rate by Commodity													
Direct Payment Yield by Commodity													
Loan Rate													
Target Price													

[Save, Load, Delete](#)

Figure 6. Crop mix selection screen after clicking on the Add Crop button.

Introduction **Enter Data** **Financial Statements** **Ratios** **Credit Scoring** [Click for Menu Display Options](#)

#_State ABrv-Description-Area/Region-TillageSys-Irr/Dry

Crops Available

1_MT-Default_HRS-State-NT-D
 2_MT-Default_Grass Hay-State-NS-D
 3_MT-Default_SumFal-State-NT-D
 4_MT-Barley-Malt-State-NS-I
 5_MT-Barley-Spring-State-NT-D

Crops Selected

0_MT-Default_Barley-Spring-State-NT-D

Input Data Menu
[Select Crop Mix](#)
[Edit Crop Expenses](#)
[Livestock Revenue](#)
[Livestock Expenses](#)
[Taxes & Insurance](#)
[Assets & Liabilities](#)
[Misc. & Overhead](#)

[Add Crop](#) [Remove Crop](#)

[Click to Update Your Crop Mix Below](#)

	Barley-Dry	DNS	Hay-Grass	SumFal	Unused	Unused	Unused	Unused	Unused	Unused	Unused	Unused	Unused
Yield Per Unit													
Planted Acres Per Enterprise													
Sales Price Per Unit													
Percent Crop Used on Farm													
Percent Acres Leased													
Landlord Crop Share Lease Percent													
Base Acreage Per Enterprise													
Percent of Base Leased from Others													
Direct Payment Rate by Commodity													
Direct Payment Yield by Commodity													
Loan Rate													
Target Price													

[Save, Load, Delete](#)

Continue this process until all crops that are labeled ...MT-Default... have been added to the Crops Selected window. You can add crops one at a time or highlight several crops in the Crops Available window by holding down the CTRL Key to select random crops from the list (not next to each other), or holding down the Shift key to select several crops that are listed next to each other. Once all the default case farm crops have been added, click the button labeled “Click to Update Your Crop Mix Below” button. Information in the crop budget database for the selected crops are displayed below the crop selection window. This screen displays only the revenue and government payment information built in to the budgets. Review this information carefully and change all the number you wish to change. You will note that the “default” budgets have some information that other budgets in the database do not have. This information includes the Acres Per Enterprise and information about government programs for the default crops used in the built in case farm. See Figure 7. If you select other crop budgets, you must complete each row of a budget to assure RDFinancial has enough information to calculate the financial statements.

Figure 7. Completed screen showing the default information for the default crop mix used.

The screenshot shows the RDFinancial software interface. The 'Select Crop Mix' menu item is selected in the upper right corner. The interface includes a 'Crops Available' list on the left, a 'Crops Selected' list in the center, and a table of financial data at the bottom. The table has columns for different crops and rows for various financial metrics.

	Barley-Dry	DNS	Hay-Grass	SumFal	Unused	Unused	Unused	Unused	Unused	Unused	Unused	Unused	Unused
Yield Per Unit	60.0	28.0	2.0	0.0									
Planted Acres Per Enterprise	400.0	900.0	250.0	800.0									
Sales Price Per Unit	\$9.00	\$10.00	\$0.00	\$0.00									
Percent Crop Used on Farm	0.0%	0.0%	0.0%	0.0%									
Percent Acres Leased	0.0%	0.0%	0.0%	0.0%									
Landlord Crop Share Lease Percent	0.0%	0.0%	0.0%	0.0%									
Base Acreage Per Enterprise	400.0	900.0	0.0	0.0									
Percent of Base Leased from Others	0.0%	0.0%	0.0%	0.0%									
Direct Payment Rate by Commodity	\$0.24	\$0.52	\$0.00	\$0.00									
Direct Payment Yield by Commodity	60.0	28.0	0.0	0.0									
Loan Rate	\$1.85	\$3.70	\$0.00	\$0.00									
Target Price	\$2.63	\$4.17	\$0.00	\$0.00									

Figure 7 shows the “Select Crop Mix” menu item (upper right corner of the screen) is selected. To complete the data entry process for all required information, click on each menu item and change all information about each crop or livestock enterprise selected. This menu also allows/requires the user to enter information about taxes, insurance, assets and liabilities and miscellaneous and overhead expenses. This default case farm also includes include livestock enterprises, not shown in this tutorial.

Once you have all necessary information entered/changed, click on the Financial Statements tab at the top of the screen, Figure 8.

Figure 8. Financial Statements for the Montana default case farm as distributed with the RDFinancial software.

Assets		Liabilities	
Beginning	Ending	Beginning	Ending
Cash on Hand	25,000	Accounts Payable (Exo)	0
Croos Held for Feed (Exo)	20,000	Accrued Interest (Exo)	33,233
Croos Held for Sale (Inc)	50,000	Current Principal	26,071
Market Livestock (Inc)	5,000	Other Current Liability (Exo)	10,000
Other Current Assets (Inc)	25,000	Short Term Notes (Exo)	0
Invest Growing Croos (Exo)	0	Def. Tax on Current Assets	0
Supo. & Prepaid Exo. (Exo)	10,000	Operating Loan Carriover	0
Total Current Assets	135,000	Total Current Liab.	69,304
Non-Current Assets		Non-Current Liabilities	
Mach. & Equipment	450,000	Prin. on T.D. & C.L.	618,039
Breeding Livestock	196,000	Def. Tax on Long Term Assets	0
Real Estate-Land, Bldgs, Imor	2,610,000	Total Business Liab.	687,343
Total Business Assets	3,391,000	Business Net Worth	2,703,657
			(5,705)

Inflows		OutFlows	
Crop Sales & Net Insurance Payments	468,000	Cash Expenses	419,499
Mkt & Cull Livestock Sales	131,201	Other Cash Business Outflows/Expense	0
Lvstk Secondary Product Sales	0	Cash Int. Exp. - T.D. & C.L.*	33,233
Government Payments	15,091	Cash Int. Exp. - Operating	11,798
Other Cash business Inflows/Income	0	Loan Prin. Payments - T.D. & C.L.	26,071
Operating Loan Proceeds	314,624	Breeding Livestock Asset Purchases	8,000
Loan Proceeds Capital Assets	0	Mach & Equip & Real Estate Purchase	0
Non-Business Inflows/Revenue	0	Owner withdrawals	50,000
Other Nonfarm Inflows	0	Cash Taxes Paid (Income & SS)	0
Other Nonfarm Inflows	0	Other Cash Outflows (Not Expenses)	0
Total Cash Inflows	\$928,916	Subtotal	\$548,601
		Operating Loan Prin. Payments	\$314,624
		Total Cash Outflows	\$863,225
		Annual Net Cash Flow (never < zero)	90,691

Income Statement - Accrual Adj.	
Cash Income (Net of cull lvstk sales)	\$583,692
Non-Cash Income Adjustments	0
Non-Cash Income (Raised Bldo Lvstk)	24,000
Capital Gain/Loss on Breeding Lvstk (Net)	6,600
Gross Revenue	\$614,292
Expense	
Cash Expense (Excluding Interest)	419,499
Non-Cash Feed Inventory Adjustment	0
Other Non-Cash Non-Interest Expense	0
Depreciation (Land, Bldgs, Equip.)	107,000
Total Operating Expense	526,499
Cash Int. Exp. - T.D. & C.L.	33,233
Cash Int. Exp. - Operating	11,798
Non-Cash Interest Expense	(1,533)
Total Expense	\$569,997
Net Business Income From Operations	44,295
Net Business Income	44,295
Income+SS+Def. Tax-Cash & Non-Cash	0
Net Income	\$44,295

Statement of Owner Equity	
Beginning Net Worth (Cost/Mrkt)	2,703,657
Net Income	44,295
Non-Business Cash Inflows	0
Owner Withdrawals (Cash)	50,000
Asset Valuation Change/Cont./Distrib.	0
Calculated Ending Net Worth	2,697,952
Reported Ending Net Worth (Cost/Mrkt)	2,697,952
Discrepancy	\$0

Step 6: RDFinancial is now ready to use with the default case farm. The user is encouraged to cycle through all of the data entry screens, especially when building a new case farm example. From here, the user is encouraged to explore the use of RDFinancial to learn financial analysis concepts, the interaction of the financial statements and the resulting information from the statements themselves or the financial ratios and measures calculated using information on the financial statements, including credit scores. You can explore these by clicking on the Ratios and Credit Scoring tabs of this software.

Other buttons:

Other "buttons" built into RDFinancial includes the **Save, Load, Delete** button. This button allows the user to Save a particular set of information after they have entered/changed all the necessary data for a particular scenario. Once all the information is entered, click on this button and a small screen will pop-up and allow you to type in a name for the scenario. You can enter several different scenarios that evaluate different enterprise mixes, number of acres, different farm units as identified by separate farm

unit FSA numbers, etc. Once a scenario is saved, it can be loaded using this button at any time in the future. **Caution:** These scenario data files are lost if you move the RDFinancial software to any other location by copying it to another director on your computer or to a thumb drive, etc.

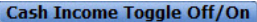
Another button you will need to use is the **Click for Menu Display Options** button in the upper right corner of the screen. This button contains a menu of items that can be used to enter or change specific data in order to demonstrate a particular concept. Figure 9 shows an example of the “You Can Not Buy Equity” data entered at the bottom of the statements. The menu display, upper right corner, shows the You Can Not Buy Equity menu listing. This example shows that depreciation (\$10,000) and interest (\$6,000) expenses incurred when an assets is purchased actually decrease net farm income and the positive equity change show on the balance sheet when the case farm is initially loaded.

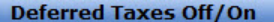
Figure 9. RDFinancial Statements with example numbers for the You Can Not Buy Equity menu displayed.

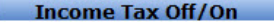
Introduction Enter Data Financial Statements Ratios Credit Scoring					You Can Not Buy Equity				
Balance Sheet		Assets		Liabilities		Income Statement - Accrual Adj.		Income	
Cash on Hand	25,000	Beginning	70,691	Accounts Payable (Exo)	0	Cash Income (Net of cull lvsstk sales)		\$583,692	
Crops Held for Feed (Exo)	20,000	Ending	20,000	Accrued Interest (Exo)	33,233	Non-Cash Income Adjustments		0	
Crops Held for Sale (Inc)	50,000		50,000	Current Principal	26,071	Non-Cash Income (Raised Brd Lvstkl)		24,000	
Market Livestock (Inc)	5,000		5,000	Other Current Liability (Exo)	10,000	Capital Gain/Loss on Breeding Lvstkl (Net)		6,600	
Other Current Assets (Inc)	25,000		25,000	Short Term Notes (Exo)	0	Gross Revenue		\$614,292	
Invest Growing Crops (Exo)	0		0	Def. Tax on Current Assets	0				
Supp. & Prepaid Exo. (Exo)	10,000		10,000	Operating Loan Carryover	0	Expense			
Total Current Assets	135,000		180,691	Total Current Liab.	69,304	Cash Expense (Excluding Interest)		419,499	
Non-Current Assets				Non-Current Liabilities		Non-Cash Feed Inventory Adjustment		0	
Mach. & Equipment	450,000		495,000	Prin. on T.D. & C.L.	618,039	Other Non-Cash Non-Interest Expense		0	
Breeding Livestock	196,000		187,000	Def. Tax on Long Term Assets	0	Depreciation (Land, Bldgs, Equip.)		117,000	
Real Estate-Land, Bldgs, Impr	2,610,000		2,565,000	Total Business Liab.	687,343	Total Operating Expense		536,499	
Total Business Assets	3,391,000		3,427,691	Business Net Worth	2,703,657	Cash Int. Exo. - T.D. & C.L.		33,233	
Change in Equity From Beginning to End of Year					(21,705)	Cash Int. Exo. - Operating		11,798	
Cash Flow Statement		Inflows		Outflows		Non-Cash Interest Expense		4,467	
Crop Sales & Net Insurance Payments	468,000	Cash Expenses	No Interest >	419,499		Total Expense		\$585,997	
Mkt & Cull Livestock Sales	131,201	Other Cash Business Outflows/Expense		0		Net Business Income From Operations		28,295	
Lvstk Secondary Product Sales	0	Cash Int. Exo. - T.D. & C.L.*		33,233		Net Business Income		28,295	
Government Payments	15,091	Cash Int. Exo. - Operating	7.50%	11,798		Income+SS+Def. Tax--Cash & Non-Cash		0	
Other Cash business Inflows/Income	0	Loan Prin. Payments - T.D. & C.L.		26,071		Net Income		\$28,295	
Operating Loan Proceeds	75%	Breeding Livestock Asset Purchases		8,000		Accrual			
Loan Proceeds Capital Assets	80,000	Mach & Equip & Real Estate Purchase		100,000		Statement of Owner Equity			
Non-Business Inflows/Revenue	0	Owner withdrawals		50,000		Beginning Net Worth (Cost/Mrkt)		2,703,657	
Other Nonfarm Inflows	0	Cash Taxes Paid (Income & SS)		0		Net Income	+	28,295	
Other Nonfarm Inflows	0	Other Cash Outflows (Not Expenses)		0		Non-Business Cash Inflows	+	0	
Total Cash Inflows	\$1,008,916					Owner Withdrawals (Cash)	-	50,000	
* T.D. = Term Debt. C.L. = Capital Lease						Asset Valuation Change/Cont./Distrib.	+/-	\$0	
		Operating Loan Prin. Payments		\$314,624		Calculated Ending Net Worth	=	2,681,952	
		Total Cash Outflows		\$963,225		Reported Ending Net Worth (Cost/Mrkt)		2,681,952	
		Annual Net Cash Flow (never < zero)		70,691		Discrepancy		\$0	
Save, Load, Delete									
	Purchase Price or Value of Asset	Depreciation on Assets Purchased This Year	Year End Asset Value Adjustment + Contribution - for Distribution	Percent Purchased Asset that is Financed	Loan Proceeds Received	Additional Ending Principal	Additional Ending Interest	Added Principal End Next Yr	Added Interest End Next Yr
Machinery & Equipment	\$100,000	\$10,000	\$0	80%	\$80,000	(\$9,104)	(\$6,000)	(\$9,787)	(\$5,317)
Real Estate (Land & Buildings)	\$0	\$0	\$0	0%	\$0	\$0	\$0	\$0	\$0
Breeding Livestock	\$0	\$0	\$0	0%	\$0	\$0	\$0	\$0	\$0
Reset Print Cash Income Toggle Off/On Deferred Taxes Off/On Income Tax Off/On									

The buttons discussed below are meant to illustrate the differences in the financial picture you get for an operation when the statements are prepared differently. These buttons are toggle buttons that turn a display feature on or off. The display controlled by each of these buttons is initially set to the Off position for all of these buttons. When a button is clicked, it changes color and the display or activity it

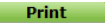
controls is either activated or deactivated. Just a reminder that RDFinancial is meant to quickly show financial management concepts while avoiding much of the nitty-gritty detail. As such, it is not capable of detailed calculations of tax attributes for any individual operation.

The  button can be used to show results of switching between an Accrual Income Statement (the default) and a Cash based Income Statement. A cash based income statement excludes the accrual adjustments, made from balance sheet entries, on the Accrual Adjusted Income Statement. This button is set to the Off position, i.e. the default is an Accrual Adjusted Income Statement.

The  button is initially set to Off, which excludes deferred tax estimates on assets listed on the balance sheet. Clicking this button includes a calculation for deferred taxes on the balance sheet and all relevant information on the other financial statements is changed. It also changes the Ratios and Credit Scores for the case farm operation. The user is encouraged to explore the implications of changes in the financial statements and the impact on the Ratios and Credit Scores.

The  button is used primarily to allow tracking the dollar amounts entered for sample transactions through the various financial statements affected. The default is the Off position, which excludes income tax calculations, so no income, social security, employment, etc. taxes are calculated on the Accrual Adjusted Income Statement. Again, this is just to simplify tracking the effects of numbers entered for examples through all of the financial statements affected. If this is clicked to turn it on, any income or expense number that is changed is run through the marginal tax bracket which makes the impact of the numbers on other statements difficult to follow. Tax parameters can be changed using the menu display button in the upper right corner.

The  button resets all values to those loaded when the software is initially opened.

The  button prints the current screen of the program. Make sure your printer is on and ready to print.

Figures 10 through 15 on the following pages are screen captures of the other data entry screens in RDFinancial for the Montana example farm/ranch.

Introduction	Enter Data	Financial Statements	Rates	Credit Scoring	Click for Menu Display Options								
<div style="display: flex; justify-content: space-between;"> <div style="width: 40%;"> <p>Crop Codes are:</p> <p>Small Grains (ALL Types) G</p> <p>Summer Fallow SF</p> <p>Hav & Other Forage Crops H</p> <p>Pasture and Range PR</p> <p>Roads, Farmstead, Waste RFW</p> <p>Other O</p> </div> <div style="width: 55%; text-align: right;"> <div style="border: 1px solid black; padding: 2px; margin-bottom: 2px; background-color: #d3d3d3;">Input Data Menu</div> <div style="border: 1px solid black; padding: 2px; margin-bottom: 2px; background-color: #d3d3d3;">Select Crop Mix</div> <div style="border: 1px solid black; padding: 2px; margin-bottom: 2px; background-color: #0056b3; color: white;">Edit Crop Expenses</div> <div style="border: 1px solid black; padding: 2px; margin-bottom: 2px; background-color: #d3d3d3;">Livestock Revenue</div> <div style="border: 1px solid black; padding: 2px; margin-bottom: 2px; background-color: #d3d3d3;">Livestock Expenses</div> <div style="border: 1px solid black; padding: 2px; margin-bottom: 2px; background-color: #d3d3d3;">Taxes & Insurance</div> <div style="border: 1px solid black; padding: 2px; margin-bottom: 2px; background-color: #d3d3d3;">Assets & Liabilities</div> <div style="border: 1px solid black; padding: 2px; margin-bottom: 2px; background-color: #d3d3d3;">Misc. & Overhead</div> </div> </div>													
Enter Crop Enterprise Name	Barley-Dry	DNS	Summer Fa	Hay-Grass	Unused	Unused	Unused	Unused	Unused	Unused	Unused	Unused	Unused
Enter Crop Enterprise Code	G	G	SF	G									
Operating Expenses	Barley-Dry	DNS	Hay-Grass	SumFal	Unused	Unused	Unused	Unused	Unused	Unused	Unused	Unused	Unused
Seed & Treatment	\$14.00	\$14.00	\$0.00	\$0.00									
Fertilizer & Application	\$48.00	\$100.55	\$40.00	\$0.00									
Chemical & Application	\$31.89	\$63.39	\$0.00	\$18.00									
Hired Labor, Farming & Irrigation	\$14.72	\$16.88	\$16.00	\$0.00									
Machinery Fuel, Oil	\$7.92	\$11.42	\$10.00	\$3.00									
Repairs and Maintenance	\$6.49	\$6.80	\$14.00	\$1.75									
Insurance	\$4.83	\$10.34	\$0.00	\$0.00									
Custom Work	\$0.00	\$0.00	\$0.00	\$0.00									
Other Misc. Expenses	\$0.00	\$0.00	\$3.00	\$0.00									
Irrigation Operating Cost	\$0.00	\$0.00	\$0.00	\$0.00									
Irrigation Water	\$0.00	\$0.00	\$0.00	\$0.00									
Drying	\$0.00	\$0.00	\$0.00	\$0.00									
Other	\$0.00	\$0.00	\$0.00	\$0.00									
Other	\$0.00	\$0.00	\$0.00	\$0.00									
Other	\$0.00	\$0.00	\$0.00	\$0.00									

Save, Load, Delete

Introduction	Enter Data	Financial Statements	Ratios	Credit Scoring	Click for Menu Display Options	
Breeding Livestock Enterprises					<div>Input Data Menu</div> <div>Select Crop Mix</div> <div>Edit Crop Expenses</div> <div>Livestock Revenue</div> <div>Livestock Expenses</div> <div>Taxes & Insurance</div> <div>Assets & Liabilities</div> <div>Misc. & Overhead</div> <div>Breeding & Dairy</div> <div>Non-Breeding Lvstk</div>	
Livestock Production/Sales Estimates:						
No. Animal Exposed/Fed/Finished	200	0	0	0	0	
Number of Offspring Weaned	175	0	0	0	0	
Cull Rate for Enterprise	15.0%	0.0%	0.0%	0.0%	0.0%	
Death Loss Percent	1.0%	1.0%	0.0%	0.0%	0.0%	
Average Sale Weight (males) Lbs per Hd	575	0	0	0	0	
Average Price (males) Dollars per Lb	\$1.30	\$0.00	\$0.00	\$0.00	\$0.00	
Average Sale Weight (females) Lbs per Hd	525	0	0	0	0	
Average Price (females) Dollars per Lb	\$1.25	\$0.00	\$0.00	\$0.00	\$0.00	
Cull Female Animal Weight in Lbs	1,200	0	0	0	0	
Cull Female Price Per Unit, Dollars per Lb	\$0.75	\$0.00	\$0.00	\$0.00	\$0.00	
Cull Male Animal Weight, Lbs per Hd	1,800	0	0	0	0	
Cull Male Price Per Unit, Dollars per Lb	\$0.75	\$0.00	\$0.00	\$0.00	\$0.00	
Breeding Ratio, Number Females/Male	25	0	0	0	0	
Bull/Ram/??? Purchase Cost, Dollars per Hd	\$3,000	\$0	\$0	\$0	\$0	
Base Value per Breeding Animal	\$800	\$0	\$0	\$0	\$0	
Second Product Units Produced by Enterprise/Animal	0	0	0	0	0	
Price Per Unit by Enterprise-Second Product	\$0.0000	\$0.0000	\$0.0000	\$0.0000	\$0.0000	
Percent Ownership/Income From Primary Product	100.0%	100.0%	100.0%	100.0%	100.0%	
Percent Ownership/Income From Secondary Product	100.0%	100.0%	100.0%	100.0%	100.0%	
Number of Replacements Needed	32	0	0	0	0	
Number Males for Sale	87	0	0	0	0	
Number of Females for Sale	55	0	0	0	0	
Weighted Avg. Lbs Sold- Breeding/NonBreeding	392	0	0	0	0	
Weighted Avg Price Per Offspring/Market animal	\$1.28	\$0.00	\$0.00	\$0.00	\$0.00	
Enterprise Revenue from offspring and culls	\$131,200	\$1	\$0	\$0	\$0	
Enterprise Revenue from secondary product(s)	\$0	\$0	\$0	\$0	\$0	
Total Enterprise Revenue	\$131,200	\$1	\$0	\$0	\$0	
Total Livestock Revenue					\$131,201	

Figure 12. Livestock expense data entry screen.

Introduction	Enter Data	Financial Statements	Ratios	Credit Scoring	Click for Menu Display Options
Livestock Enterprise Operating Costs (Variable Costs)					Breeding Livestock Enterprises
Cash Operating/Variable Expenses	Cow-Calf	Sheep	OtherBrdgLvstk	OtherBrdgLvstk	OtherBrdgLvstk
Feed: All Purchased Roughages	\$0.00	\$0.00	\$0.00	\$0.00	\$0.00
Feed: All Purchased Concentrates/supplements	\$50.00	\$0.00	\$0.00	\$0.00	\$0.00
Repairs and Maintenance	\$45.00	\$0.00	\$0.00	\$0.00	\$0.00
Supplies	\$28.00	\$0.00	\$0.00	\$0.00	\$0.00
Chemicals, Fertilizer	\$14.00	\$0.00	\$0.00	\$0.00	\$0.00
Vet. Med, Breeding	\$28.00	\$0.00	\$0.00	\$0.00	\$0.00
Freight	\$22.00	\$0.00	\$0.00	\$0.00	\$0.00
Custom Work, Mach./Equip. Rents	\$8.00	\$0.00	\$0.00	\$0.00	\$0.00
Lease cost for Grazing & Raised Feeds	\$65.00	\$0.00	\$0.00	\$0.00	\$0.00
Lease/Rent Cost for Livestock	\$6.00	\$0.00	\$0.00	\$0.00	\$0.00
Gas, Fuel, Oil	\$50.00	\$0.00	\$0.00	\$0.00	\$0.00
Insurance	\$25.00	\$0.00	\$0.00	\$0.00	\$0.00
Other Misc Exp. (Util., Fees, Dues, Subscriptions, etc.)	\$120.00	\$0.00	\$0.00	\$0.00	\$0.00
Other Cash Operating	\$0.00	\$0.00	\$0.00	\$0.00	\$0.00
Hired Labor	\$0.00	\$0.00	\$0.00	\$0.00	\$0.00
Lvstk Expense	\$0.00	\$0.00	\$0.00	\$0.00	\$0.00
Other Cash Operating	\$0.00	\$0.00	\$0.00	\$0.00	\$0.00
Percent Expenses Paid by Operator	100.0%	100.0%	100.0%	100.0%	100.0%
Total Cash Operating Costs Per Breeding/Feeder Animal	\$461	\$0	\$0	\$0	\$0
Operators Cash Cost per LB Mkt Offspring Produced	\$1	\$0	\$0	\$0	\$0
Lvstk cost by enterprise	\$92,200	\$0	\$0	\$0	\$0
Cash Cost Per Breeder/Feeder Animal	\$461	\$0	\$0	\$0	\$0
Total Livestock Cash Cost Of Production	\$92,200				
Net Income From All Livestock Enterprises	\$39,001				

Input Data Menu

Select Crop Mix

Edit Crop Expenses

Livestock Revenue

Livestock Expenses

Taxes & Insurance

Assets & Liabilities

Misc. & Overhead

Breeding & Dairy

Non-Breeding Lvstk

Figure 13. Taxes and Insurance data entry screen.

Introduction	Enter Data	Financial Statements	Ratios	Credit Scoring	Click for Menu Display Options
<p>Mouse Over for Help</p>					<p>Input Data Menu</p> <p>Select Crop Mix</p> <p>Edit Crop Expenses</p> <p>Livestock Revenue</p> <p>Livestock Expenses</p> <p>Taxes & Insurance</p> <p>Assets & Liabilities</p> <p>Misc. & Overhead</p>
<p>Property Taxes:</p>					
Real Estate	\$12,000				
Buildings and Improvements	\$0				
Machinery and Equipment	\$6,500				
Breeding Livestock	\$0				
Property taxes on other capital assets	\$0				
Insurance (Not Crop)	\$10,000				
Total Cash Fixed Costs for the operation	\$28,500				

Figure 14. Asset and Liabilities data entry screen.

Introduction
Enter Data
Financial Statements
Ratios
Credit Scoring

Click for Menu Display Options

Mouse Over for Help

Beginning Asset Value Info.

Crop Acres (Small Grains & Hay)

2,350

Average Value Per Acre

\$600

Total Cropland Value

\$1,410,000

Pasture and Range Acres for Grazing

4,000

Average Value Per Acre

\$250

Total Pasture/Rangeland Value

\$1,000,000

Total ALL Owned Acres

6,350

ALL Leased Acres

0

Total Acres (Owned + Leased)

6,350

Total Real Estate - Owned Acres

\$2,410,000

Mach & Equip.

\$450,000

Bldg & Improvements

\$200,000

Breeding Livestock

\$196,000

Total Asset Value

\$3,256,000

Total Depreciation

\$107,000

Depreciation or Capital Replacement Expense by Asset Type

Asset Type

Percent Debt By Asset Type

\$25,000

30%

\$45,000

10%

\$20,000

10%

\$17,000

0%

Liabilities

Short Term

Long Term

Avg. Interest Rate

7.5%

5.0%

Avg. Payment No.

4

10

Avg. Length Loan

7

30

Beginning and Ending Liability Estimates

% Debt	Beginning Annual Principal	Beginning Annual Interest	Ending Annual Principal	Ending Annual Interest
\$723,000	(\$16,882)	(\$30,150)	(\$17,726)	(\$29,306)
\$45,000	(\$6,362)	(\$2,134)	(\$6,839)	(\$1,657)
\$20,000	(\$2,827)	(\$949)	(\$3,040)	(\$736)
\$0	\$0	\$0	\$0	\$0
Total Liabilities	\$788,000	\$26,071	\$33,233	\$27,604
Debt/Asset Ratio	20.39%			

Input Data Menu

Select Crop Mix

Edit Crop Expenses

Livestock Revenue

Livestock Expenses

Taxes & Insurance

Assets & Liabilities

Misc. & Overhead

Figure 15. Miscellaneous and Overhead expense data entry screen.

Introduction
Enter Data
Financial Statements
Ratios
Credit Scoring

Click for Menu Display Options

Mouse Over for Help

Total Tenant Crop Cost

\$291,132

Livestock--Total Cost (Owner & Crop Share Tena

\$92,200

Tenant Cost of Production (Crops & Lvstk)

\$383,332

Cost of production Overhead & Misc. Percentage

2%

\$7,667

Total Crop, Livestock and Overhead cost of p

\$390,999

Input Data Menu

Select Crop Mix

Edit Crop Expenses

Livestock Revenue

Livestock Expenses

Taxes & Insurance

Assets & Liabilities

Misc. & Overhead