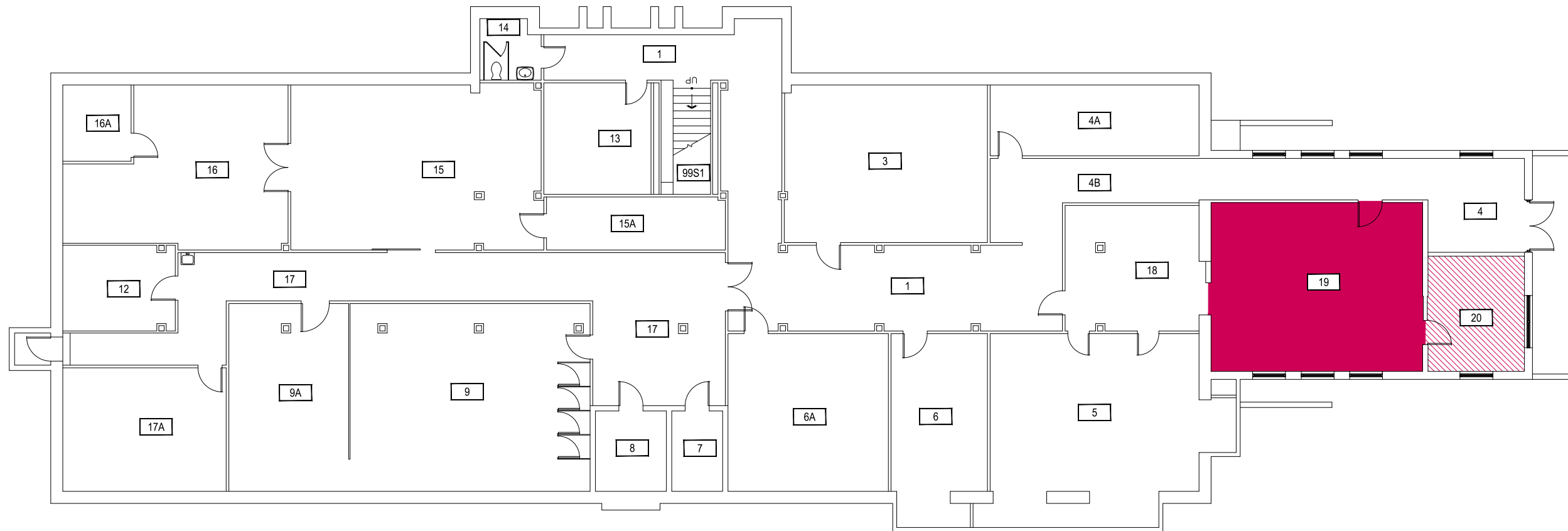


CLICK ON HAZARD LOCATION FOR CONTACT INFORMATION.

ADDITIONAL INFORMATION IS AVAILABLE THROUGH THE MSU  
BIOSAFETY OFFICER AT (406) 994-6998



Chemical



Radiation



1



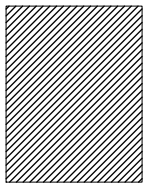
2



3



Indicates  
access  
only  
through  
hazard  
area.



# HERRICK HALL

LEVEL B

CAMPUS PLANNING,  
DESIGN & CONSTRUCTION  
MONTANA STATE UNIVERSITY  
PHONE: 406.994.5413 FAX: 406.994.5665

SHEET TITLE

SHEET  
**LB**

DATE  
01-06-15



0 7'-6" 15' 30'



SCALE: 1" = 15'

Apr 16, 2015 - 8:30am - BE\_109\_BVWall.dwg  
E:\Log - Feasibility\13-00-00\13-06-06 B Biohazard Areas\130 Drawings\Herrick Hall\