

CLICK ON HAZARD LOCATION FOR CONTACT INFORMATION.

ADDITIONAL INFORMATION IS AVAILABLE THROUGH THE MSU BIOSAFETY OFFICER AT (406) 994-6998



Chemical



Radiation



1



2



3



Indicates access only through hazard area.



# ANIMAL BIOSCIENCE BLDG

LEVEL 3

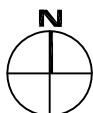
CAMPUS PLANNING,  
DESIGN & CONSTRUCTION  
MONTANA STATE UNIVERSITY  
BOZEMAN, MONTANA  
PHONE: 406.994.5413 FAX: 406.994.5665

SHEET TITLE

SHEET  
**L3**

DATE  
01-06-15

Apr 08, 2015 - 1:21pm - BH\_147\_3Wall.dwg  
E:\Log - Feasibility\13-06-00\13-06-06 Biohazard Areas\130 Drawings\Animal Bioscience Bldg



0 10' 20' 40'



SCALE: 1" = 20'