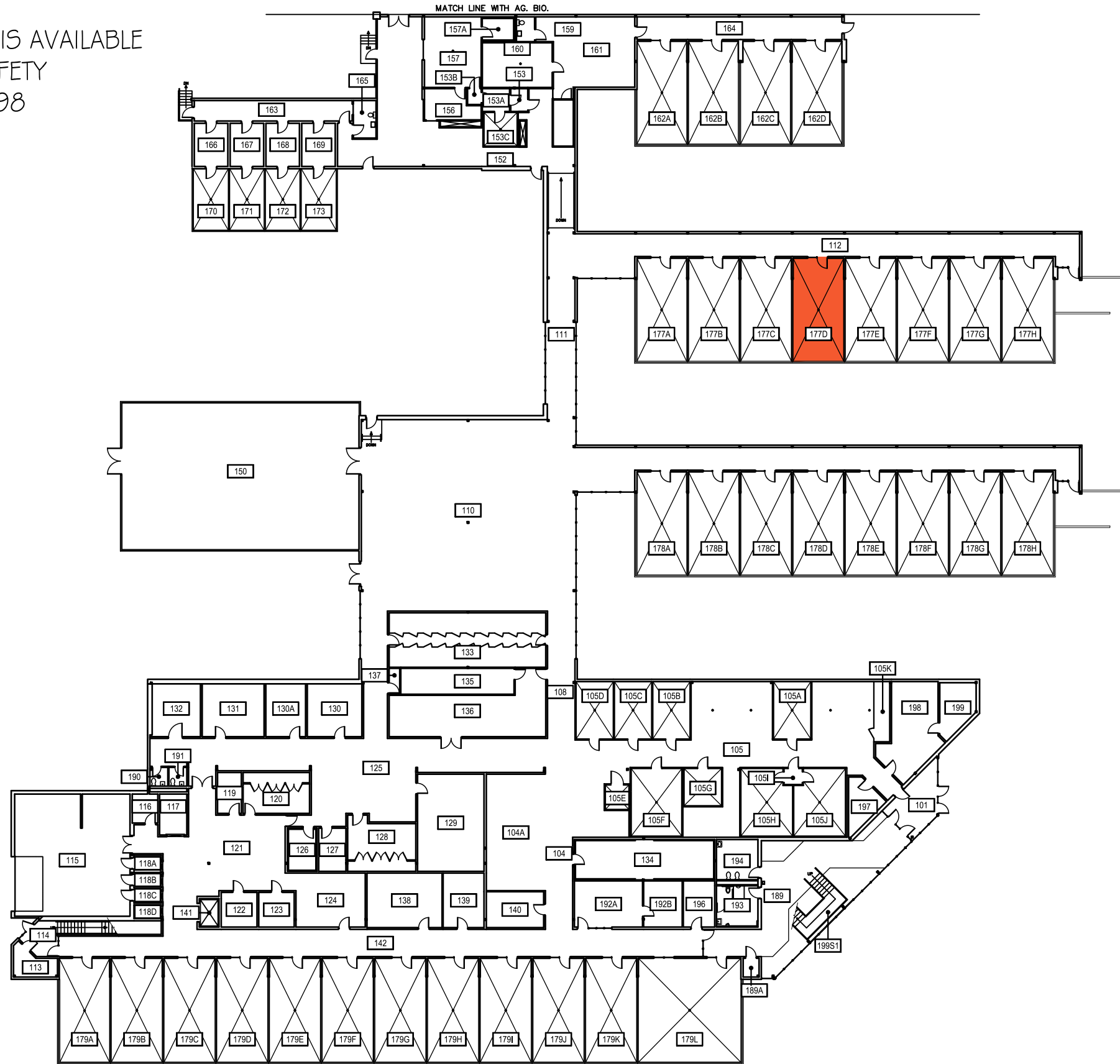


CLICK ON HAZARD LOCATION FOR CONTACT INFORMATION.

ADDITIONAL INFORMATION IS AVAILABLE THROUGH THE MSU BIOSAFETY OFFICER AT (406) 994-6998



Chemical



Radiation



1



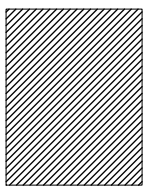
2



3



Indicates access only through hazard area.



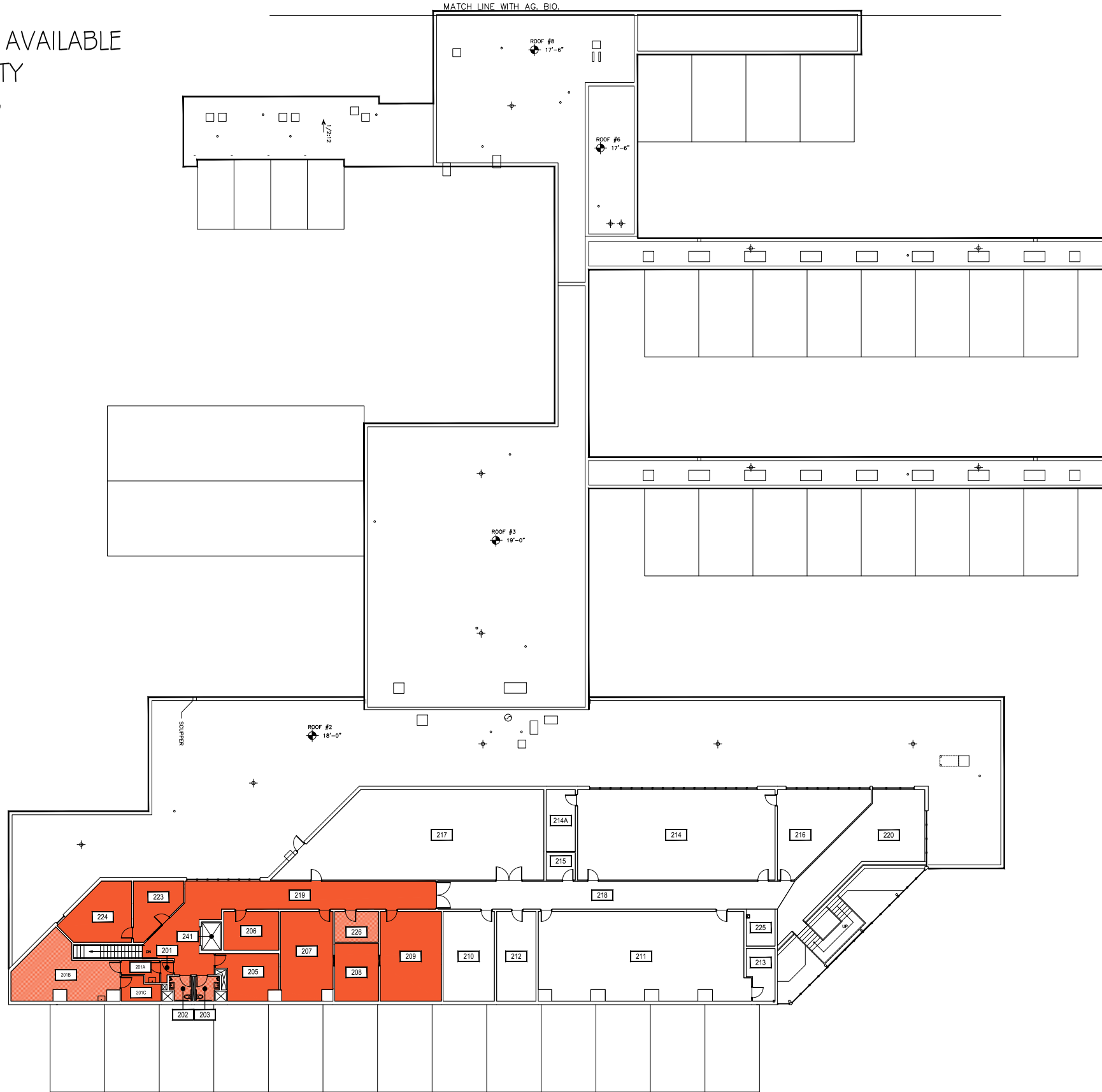
0 17'-6" 35' 70'



SCALE: 1" = 35'

CLICK ON HAZARD LOCATION FOR CONTACT INFORMATION.

ADDITIONAL INFORMATION IS AVAILABLE THROUGH THE MSU BIOSAFETY OFFICER AT (406) 994-6998



Chemical



Radiation



1



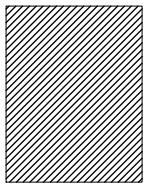
2



3



Indicates access only through hazard area.



0 17'-6" 35' 70'



SCALE: 1" = 35'