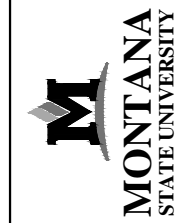


CLICK ON HAZARD LOCATION FOR CONTACT INFORMATION.

ADDITIONAL INFORMATION IS AVAILABLE THROUGH THE MSU BIOSAFETY OFFICER AT (406) 994-6998



MOLECULAR BIOSCIENCES BLDG LEVEL 1

CAMPUS PLANNING,
DESIGN & CONSTRUCTION
MONTANA STATE UNIVERSITY
PHONE: 406.994.5413 FAX: 406.994.5665

SHEET TITLE

SHEET
L1

DATE
01-06-15

Chemical



Radiation



1



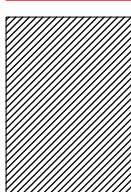
2



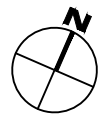
3



Indicates access only through hazard area.



Apr 08, 2015 - 2:19pm - BEI_904_1W.dwg
C:\Users\gary.gramer\appdata\local\temp\AcPublish_752d\



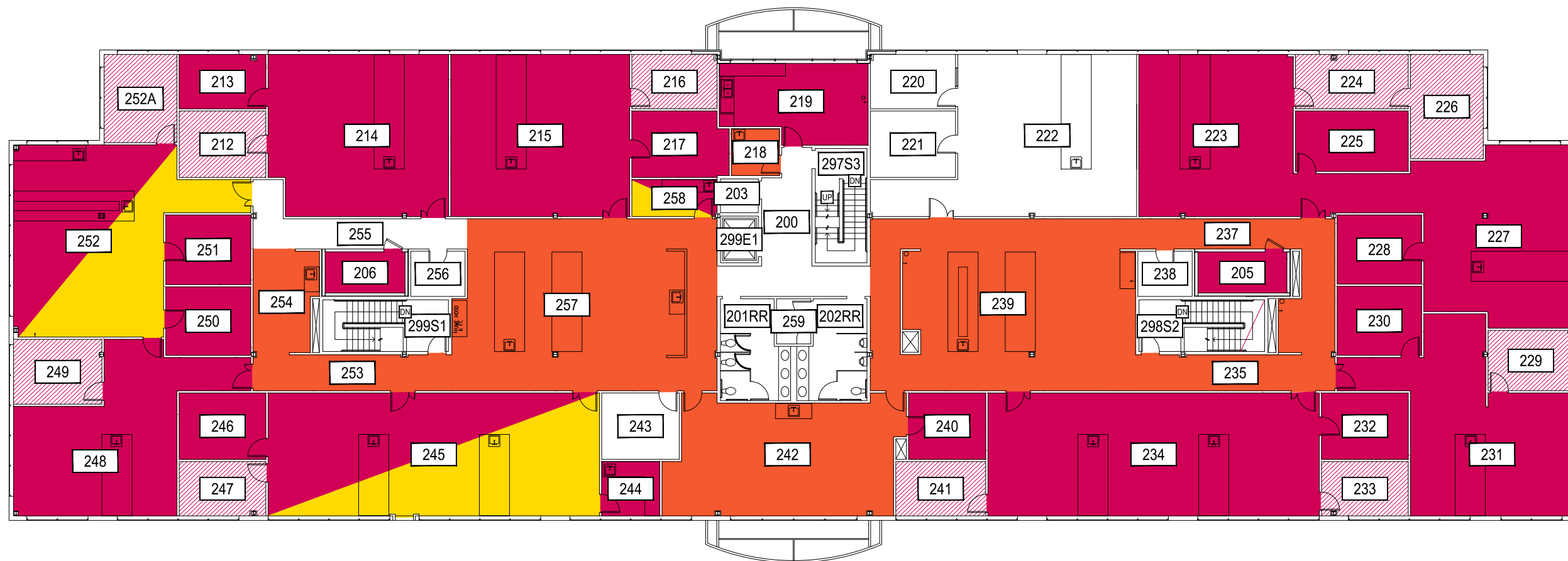
0 10' 20' 40'



SCALE: 1" = 20'

CLICK ON HAZARD LOCATION FOR CONTACT INFORMATION.

ADDITIONAL INFORMATION IS AVAILABLE THROUGH THE MSU BIOSAFETY OFFICER AT (406) 994-6998



Chemical



Radiation



1



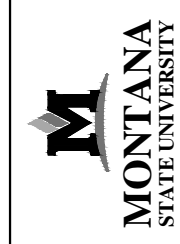
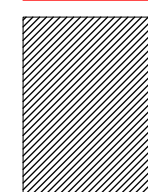
2



3



Indicates access only through hazard area.



MOLECULAR BIOSCIENCES BLDG

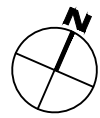
LEVEL 2

CAMPUS PLANNING,
DESIGN & CONSTRUCTION
MONTANA STATE UNIVERSITY
PHONE: 406.994.5413 FAX: 406.994.5665

SHEET TITLE

SHEET
L2

DATE
01-06-15



0 10' 20' 40'



SCALE: 1" = 20'

Apr 08, 2015 - 2:19pm - BH_904_21Wall.dwg
C:\Users\gary.gramer\appdata\local\temp\AcPublish_7520\